

# ROUGH COUNTRY

## SUSPENSION SYSTEMS®



**WARNING:** This product contains a chemical known to the State of California to cause Cancer and Reproductive Harm. For more information, go to [www.P65Warnings.ca.gov](http://www.P65Warnings.ca.gov).

## 2022-24 NISSAN FRONTIER SPORT STYLE FLARES

### PRIOR TO INSTALLATION

- A) Install the flares according to these written instructions with the hardware provided. **WARNING:** Failure to install according to these instructions will invalidate the warranty. This includes, but is not limited to, using alternative installation methods, hardware, or materials. **DO NOT USE:** Loctite, Superglue, or similar products on the hardware or the flares. Install flares on cleaned vehicle surfaces.
- B) **Fit:** Verify the fit of the flares to vehicle prior to installation (some filing, sanding, or cutting may be necessary to ensure proper fit).
- C) **Painting:** (Optional) if paint is desired it must be done prior to installing flares on vehicle. Clean outer surface with a good grade degreaser. **DO NOT USE LACQUER THINNER OR ENAMEL REDUCER AS A DEGREASER.** Wipe outer surface thoroughly with a tack rag prior to paint. Application of plastic adhesion promoter for ABS plastic as per your paint system manufacturer's recommendations is required. Paint flares using a high-quality enamel, or polyurethane automotive paint. If painting edge trim (not recommended), use a flex additive.
- D) **Performance:** Using larger tires may increase the area required to turn the vehicle. Some tire/rim combinations may require lowering bump stops and or installing steering stops to prevent tire from contacting flare.
- E) **Exhaust System:** Modifications may be necessary to maintain a minimum 4" clearance between flares and exhaust pipes. (Exhaust gases should not vent directly onto flares)
- F) **Metal Protection:** All exposed fasteners and bare metal should be treated with rust resistant paint **BEFORE** installing flares. Spray inner fender wells with undercoating **AFTER** flare attachments have been completed.
- G) **Decals:** Flares may interfere with existing decals on vehicle. If you wish, remove decals prior to installation of flares.
- H) **Care & Cleaning:** Fender flares are built to last; any detergent you use to wash your vehicle is sufficient to clean the flare. Do not use any harsh abrasive detergents.

### TOOLS FOR EASY INSTALLATION:

- Soft Cloth or Alcohol Wipes
- Phillips Screwdriver
- Pry Tool
- T-30 Torx Bit
- 10mm Socket

**PLEASE READ:** Dirt and debris can become lodged between the fender flares and the vehicle's fenders, causing scratching and paint wear from vibration. Manufacturer is not responsible for any damage, and the installation of our fender flares is done with the buyer's understanding that this scratching and paint wear may occur.

**LIMITED LIFETIME WARRANTY AGAINST ANY MANUFACTURING DEFECTS:** To claim warranty you must provide Proof of Purchase.

## INCLUDED IN HARDWARE KIT:

1.



"U" Clip  
4 pcs

2.



Plastic Grommet  
8 pcs

3.



10mm Hex Bolt  
8 pcs

4.



#10 Truss Head  
Screw  
4 pcs

5.



Wiper-Style Edge  
Trim  
330 inches



## IF YOU PURCHASED GLOSSY BLACK FLARES (CODE "RCGB"):



Prior to beginning installation process, peel the protective liner from each plastic piece included in the flare kit – all flares and inner pieces.

NOTE: It will be difficult to remove liner once edge trim and hardware are installed.

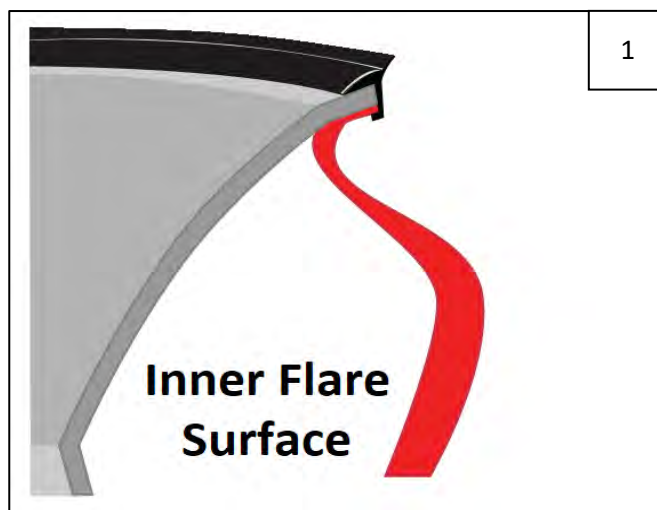
Once liner is removed, take care not to scratch flare surfaces. If flare needs to be cleaned, wipe gently with a clean soft cloth.

## SECTION 1: EDGE TRIM INSTALLATION

Using a debris-free soft cloth or alcohol wipe, clean vehicle at areas of installation.

Peel 2-3 inches of red vinyl backing away from supplied edge trim tape. Applying the adhesive side of the edge trim to the inner side of the flare, affix the edge trim to the top edge of the flare (the portion that comes in contact with the side of the vehicle).

Press edge trim into place along the top edge of the flare in one-foot increments, pulling red vinyl backing free as you continue to work your way around the top edge of the flare. Trim edge trim flush with ends of flare.



## SECTION 2: FRONT FLARE INSTALLATION



**If your vehicle has factory flares:** Remove and retain 8 factory fasteners from wheel well.

**If your vehicle does not have factory flares:** Skip to Step 5.



Remove factory flare prying down and away from vehicle body, disengaging internal clips. Remove factory flare. Remove any broken clips remaining in fender.

**NOTE:** if your vehicle has mudflaps, these must also be removed prior to flare removal.



Using a 10mm socket or Phillips Screwdriver, remove 2 factory screws holding reflector into factory flare. Disengage center clip and remove reflector – this will be installed later.

**Skip to Step 10.**



If your vehicle does not have factory flares, remove and retain 6 factory fasteners from fender lip.



Remove and retain 1 Phillips screw from bumper valance.



The wheel well liner must be pulled back to access the screws that hold the reflector. Use a pry tool to remove and retain plastic fasteners from front area of wheel well liner located inside fender well. These will be reinstalled.

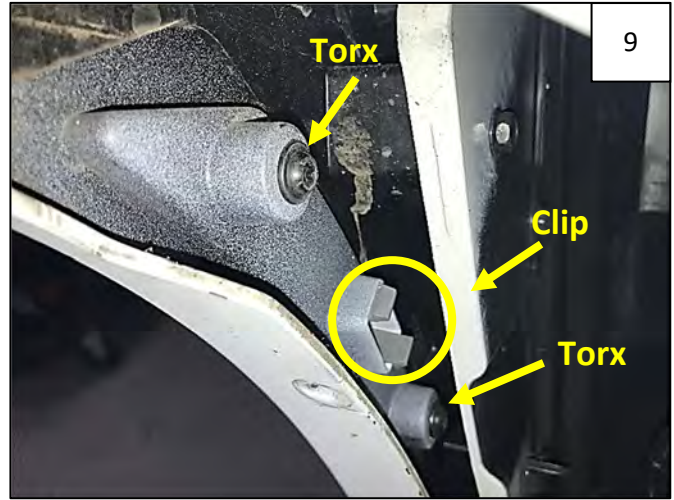




8

Pull wheel well liner away to access inside of fender at reflector area.

**NOTE:** It may be helpful to turn or remove the wheel.



9

Using a T-30 Torx bit, remove two fasteners holding reflector in place, from backside of fender.

Disengage center clip by squeezing the two tabs together and remove reflector.

Reinstall wheel well liner using factory fasteners removed in Steps 6-8.



10

Push reflector into molded in feature in Front Flare.



11

Reinstall screws removed in Step 4 or 10 on backside of reflector/flare.



12

Install a supplied "U" Clip onto Front Inner Piece.



13

Clip locations.



14

Hold Front Inner Piece on fender lip and install 2 factory screws removed in Step 2 or 5 through Inner Piece and into fender.



15

Hold flare firmly on fender. Install 2 supplied #10 Truss Head Screws through holes in flare and into Inner Piece as indicated by arrows.



16

Install 4 factory screws at areas indicated by arrows.  
Apply pressure to flare towards vehicle body at each fastening point and tighten all fasteners.



17

Completed Front Flare installation.





### SECTION 3: REAR FLARE INSTALLATION



Remove 2 Phillips Screws from front mud guard at inside front of wheel well, and 1 screw from underside of mud guard. Retain all screws. **NOTE:** Some screws will be used for flare installation.



Remove 1 10mm bolt from front mud guard at inside front of wheel well. Retain this bolt. Disengage lower clip and remove and discard mud guard.



**If your vehicle has factory flares:** Remove and retain 7 factory fasteners from wheel well.

**If your vehicle does not have factory flares:** Skip to Step 24.



Remove factory flare prying down and away from vehicle body, disengaging internal clips. Remove factory flare. Remove any broken clips remaining in fender.

**NOTE:** if your vehicle has rear mudflaps, these must also be removed prior to flare removal.



Install a supplied Plastic Grommet into 4 square holes in fender as indicated by arrows.

**NOTE:** If a grommet or clip is already in any of these locations, this may be used.



Plastic Grommet locations.



24

Hold flare firmly on fender. Start a supplied 10mm Hex Bolt through flare and into grommets installed in Step 23.

If your vehicle had factory flares, use factory fasteners.



25

Reinstall 10mm Hex Bolt removed in Step 19.



26

Install 1 Phillips Screw removed in Step 18.

Apply pressure to flare towards vehicle body at each fastening point and tighten all fasteners.



27

Complete Rear Flare Installation.