

POLARIS XPEDITION ADV-5-1000 BED WINDOW MOLLE PANEL

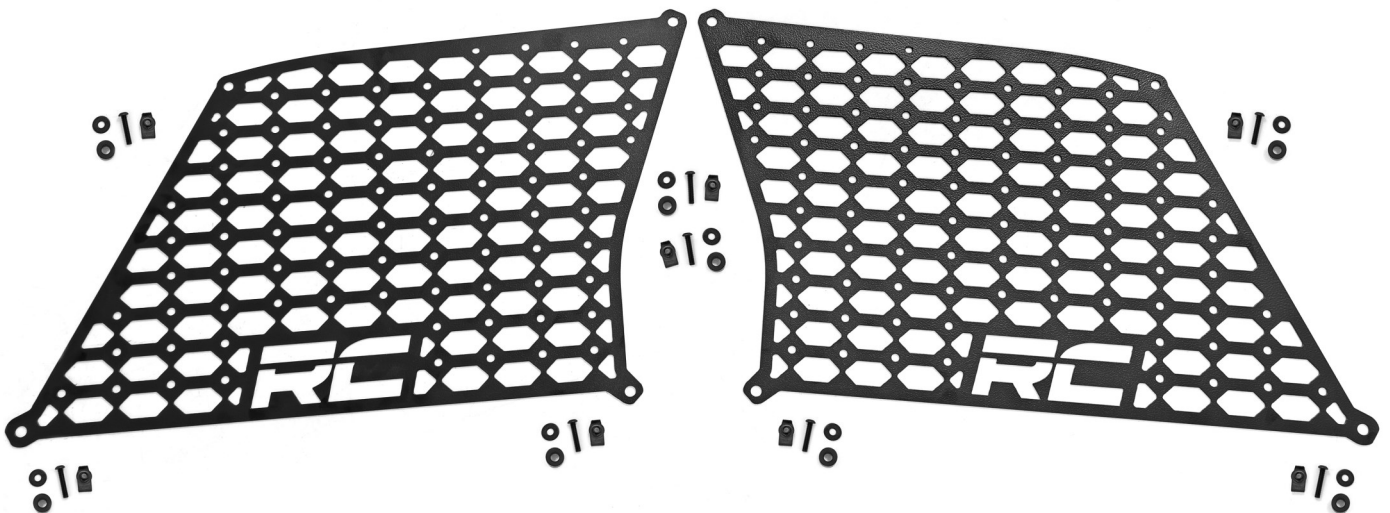
Thank you for choosing Rough Country for all your vehicle needs.

Please read instructions before beginning installation. Check the kit hardware against the kit contents shown below. Be sure you have all needed parts and know where they go.

If question exist, please call us @1-800-222-7023. We will be happy to answer any questions concerning this product.

Check all fasteners for proper torque. Check to ensure for adequate clearance between all components.

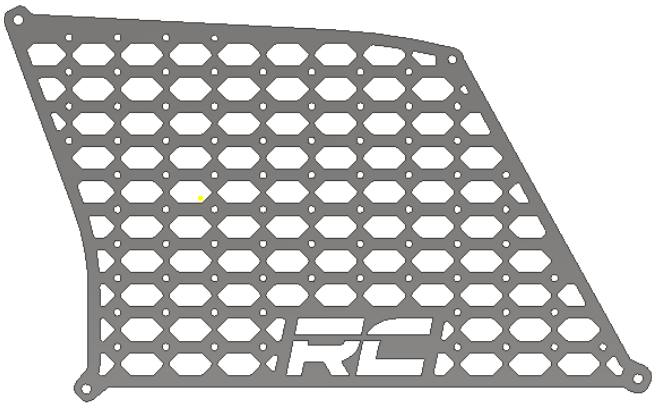
Periodically check all hardware for tightness.



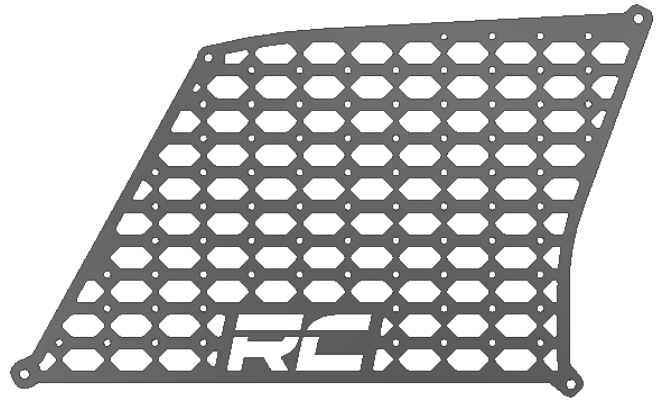
Torque Specs:

Size	Grade 5	Grade 8	Size	Class 8.8	Class 10.9
5/16"	15 ft/lbs	20ft/lbs	6MM	5ft/lbs	9ft/lbs
3/8"	30 ft/lbs	35ft/lbs	8MM	18ft/lbs	23ft/lbs
7/16"	45 ft/lbs	60ft/lbs	10MM	32ft/lbs	45ft/lbs
1/2"	65 ft/lbs	90ft/lbs	12MM	55ft/lbs	75ft/lbs
9/16"	95 ft/lbs	130ft/lbs	14MM	85ft/lbs	120ft/lbs
5/8"	135ft/lbs	175ft/lbs	16MM	130ft/lbs	165ft/lbs
3/4"	185ft/lbs	280ft/lbs	18MM	170ft/lbs	240ft/lbs

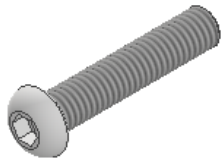




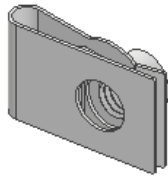
A



B



C



D



E



F

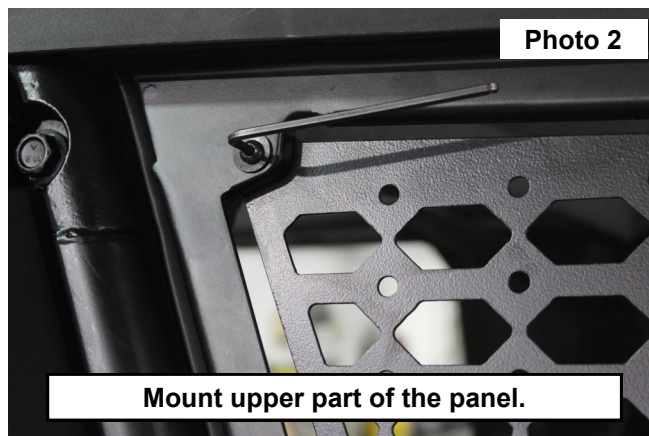
Part	QTY	Description
A	1	Dr. Side MOLLE Panel
B	1	Pass. Side MOLLE Panel
C	8	6mm x 30mm Button Head Bolt
D	8	6mm Body Clip
E	6	Spacer
F	8	6mm Flat Washer

TOOLS NEEDED:
 1/4" Drill
 Drill Motor
 4mm Allen Wrench
 Paint Pen

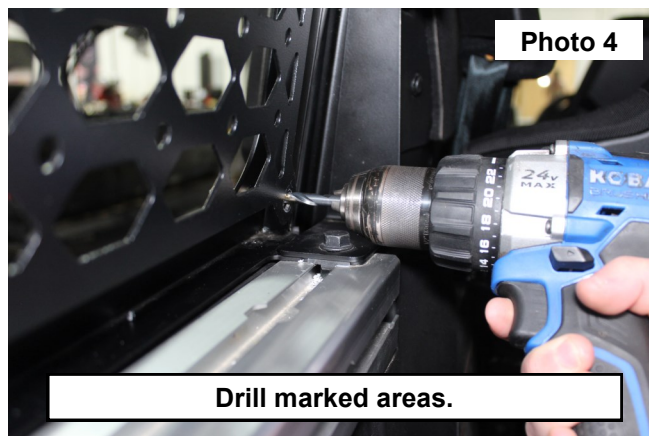
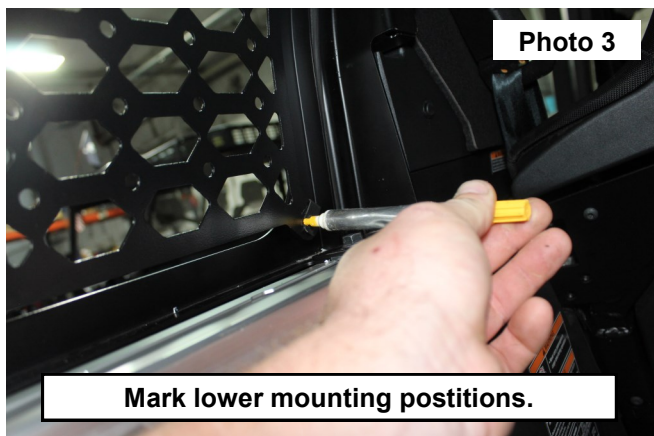


INSTALLATION INSTRUCTIONS

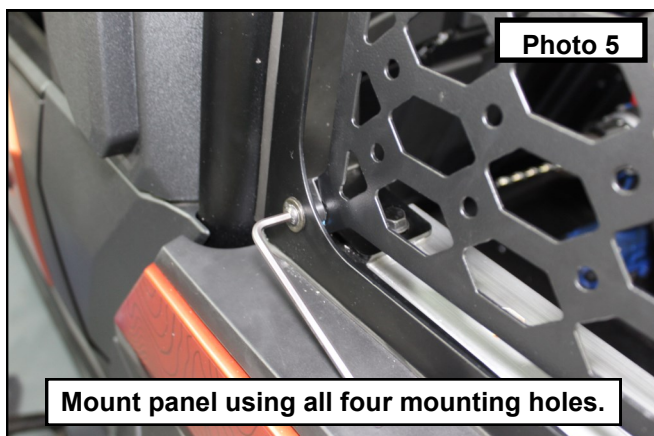
1. Install the supplied clip nuts into the two upper mounting holes of the panel. **See Photo 1.**
2. Install the panel to the vehicle using the upper mounting holes with the supplied spacer, flat washers, and button head bolts. Tighten with a 4mm Allen wrench. **NOTE:** The top inner mounting hole does not need a spacer. **See Photo 2.**



3. Use a paint pen to mark the two lower mounting holes. **See Photo 3.**
4. Remove the panel using a 4mm Allen wrench and set aside the hardware.
5. Make a hole in the previously marked locations with a 1/4" drill. **See Photo 4.**



6. Use the supplied spacers, flat washers, and button head bolts to mount the panels to the vehicle. Tighten with a 4mm Allen wrench. **NOTE:** The top inner mounting hole does not need a spacer. **See Photo 5.**
7. Repeat for other side.



POST INSTALLATION INSTRUCTIONS

1. Check all fasteners for proper torque. Check to ensure for adequate clearance between all rotating, mobile, fixed, and heated members. Verify clearance between exhaust and brake lines, fuel lines, fuel tank, floorboards, and wiring harness.
2. Perform head light check and adjustment to proper settings.
3. All kit components must be retightened at 500 miles and then every 300 miles after installation. Periodically check all hardware for tightness.
4. Install "Warning to Driver" decal on sun visor.



By purchasing any item sold by Rough Country, LLC, the buyer expressly warrants that he/she is in compliance with all applicable, State, and Local laws and regulations regarding the purchase, ownership, and use of the item. It shall be the buyers responsibility to comply with all Federal, State and Local laws governing the sales of any items listed, illustrated or sold. The buyer expressly agrees to indemnify and hold harmless Rough Country, LLC for all claims resulting directly or indirectly from the purchase, ownership, or use of the items.

