



## **3073 - 2015-PRESENT, MERCEDES SPRINTER 2500 4X4 / AWD, REAR BUMP BUDDY JOUNCE KIT**

Version 1.1

### General Notes

- For the most up to date and current instructions, please visit our website at [www.vancompass.com](http://www.vancompass.com)
- Please read all instructions thoroughly before starting installing Van Compass products.
- This kit is compatible with Van Compass Falcon shocks only. We cannot guarantee compatibility of other shock brands not sold by Van Compass.

### Parts List

#### **3073 – 2015-PRESENT, MERCEDES SPRINTER 2500 4X4 / AWD, REAR BUMP BUDDY JOUNCE KIT**

- (2) 105601 MERCEDES SPRINTER 2500, REAR BUMP BUDDY JOUNCE
- (2) WFM-8 M8 FLAT WASHER, CLEAR ZINC
- (2) NPM8-1.25 M8-1.25 NUT, CLEAR ZINC
- (4) 307301 MERCEDES SPRINTER 2500, REAR BUMP BUDDY, CHASSIS BOLT WING
- (2) 307302 MERCEDES SPRINTER 2500, REAR BUMP BUDDY, CHASSIS BASE ADAPTER
- (1) 307305-LH MERCEDES SPRINTER 2500, REAR BUMP BUDDY, DRIVER SIDE AXLE JOUNCE PAD, OPTI-RATE
- (1) 307305-RH MERCEDES SPRINTER 2500, REAR BUMP BUDDY, PASSENGER SIDE AXLE JOUNCE PAD, OPTI-RATE
- (1) 307307-LH MERCEDES SPRINTER 2500, REAR BUMP BUDDY, DRIVER SIDE AXLE JOUNCE PAD, MINI-SPRING
- (1) 307307-RH MERCEDES SPRINTER 2500, REAR BUMP BUDDY, PASSENGER SIDE AXLE JOUNCE PAD, MINI-SPRING
- (16) SM10-1.50-25-12.9 M10-1.50 X 25MM LONG, SOCKET HEAD CAP SCREW, GR 12.9
- (4) WFM-10 M10 FLAT WASHER, CLEAR ZINC
- (4) WLM-10 M10 SPLIT LOCK WASHER, CLEAR ZINC
- (2) 307601 MERCEDES SPRINTER 2500, REAR BUMP BUDDY, 2" LIFT SPACER

### Tools Needed

- Quality Jack & Jack Stands (Optional)
- Simple hand tools:
  - Basic wrench and socket set:
    - Metric allen wrenches: 8mm

- Metric wrench sizes: 13mm
- T-55 Torx
- Prybar or large screw driver
- Torque wrench

### Approximate Installation Time

- Professional shop: 30min-1 hour
- Driveway install: 1-2 hours

### Installation

- 1) The installation of this kit can be performed with the vehicle sitting under its own weight at ride height, however, it is easier to install with the vehicle safely supported to allow the rear suspension to hang free.
- 2) These instructions will document installation on the driver (left hand) side of the vehicle. Installation on the passenger side is identical. The kit can be installed simultaneously on both sides of the vehicle.
- 3) Please reference the configuration guide below to match the suspension configuration of the vehicle to the proper upper and lower jounce components.

# 3073 BUMP BUDDY UPPER AND LOWER CONFIGURATIONS

**DO NOT MIX AND MATCH SETUPS AGAINST THESE OPTIONS**

VC Opti-Rate  
Full Replacement  
Leaf Spring Pack



Lower Pad - Short Height



Factory Leaf Spring  
+  
Factory Lift Block



Lower Pad - Short Height



Factory Spring  
+  
VC 3-Leaf Mini Pack  
+  
Factory Lift Block



Lower Pad - Tall Height



Factory Spring  
+  
VC 6-Leaf Mini Pack  
+  
Factory Lift Block



Lower Pad - Tall Height



VC Opti-Rate  
Full Replacement  
Leaf Spring Pack  
+  
2" VC lift block



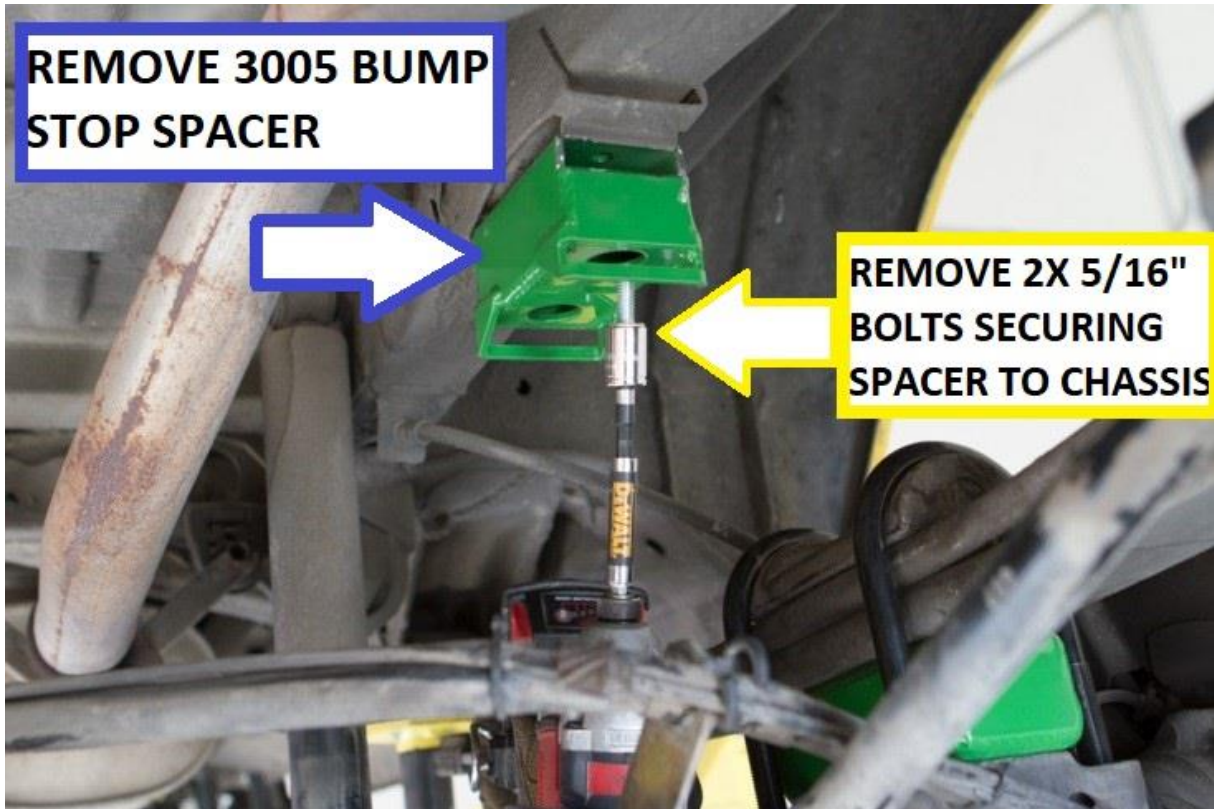
Lower Pad - Short Height



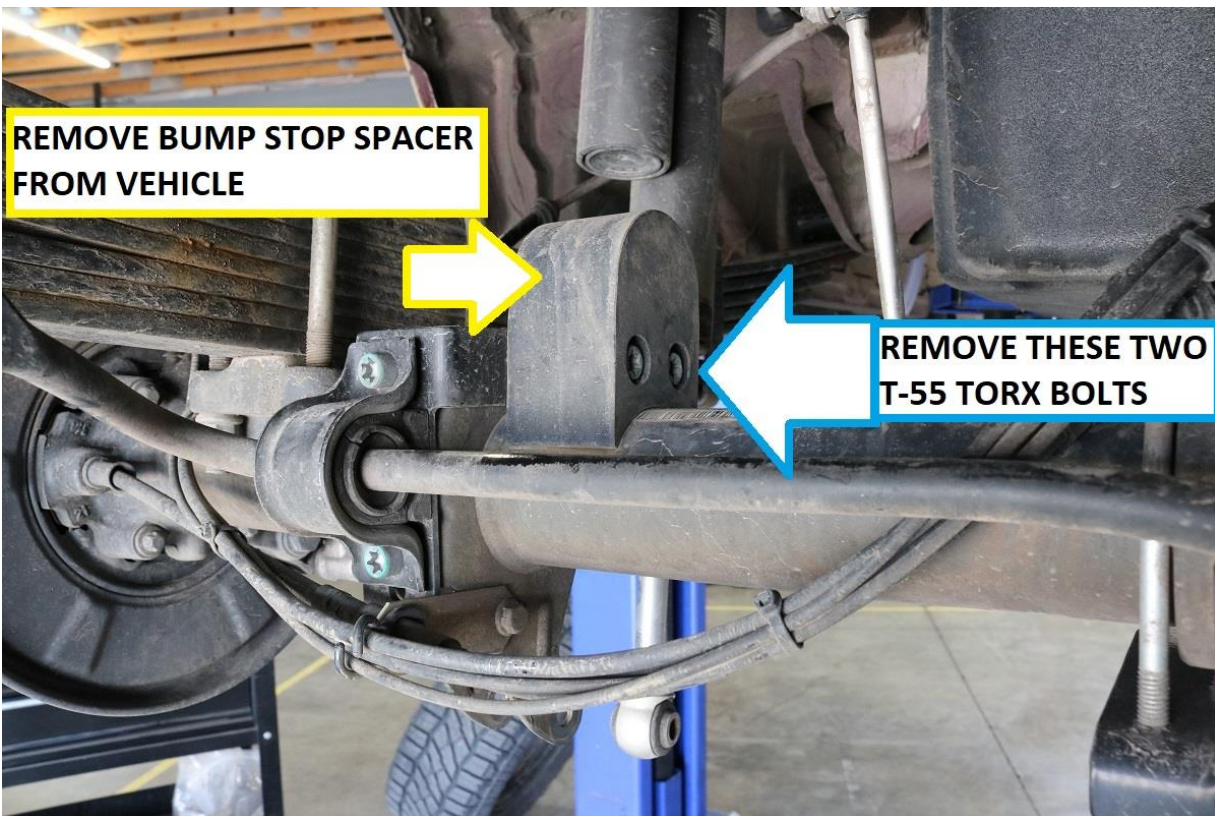
- 4) Remove the rear bump stops. Some Windex or similar glass cleaner to lubricate the bump stops helps make removal easier.
- a. Note – Bump stop designs vary by year and wheelbase options. However, they all attach to the chassis in the same manner. A pry bar can be useful in bump stop removal. See images below.



- 5) Note- if vehicle is equipped with a Van Compass 2" Striker lift kit system, remove the 3005 rear bump stop spacer as well. It is secured with two 5/16" bolts. Use a 1/2" socket / wrench for removal.



- 6) At the axle, locate and remove the two T-55 torx bolts securing the OEM bump stop spacer to the axle. Once the bolts are removed, remove the bump stop spacer itself from the vehicle.

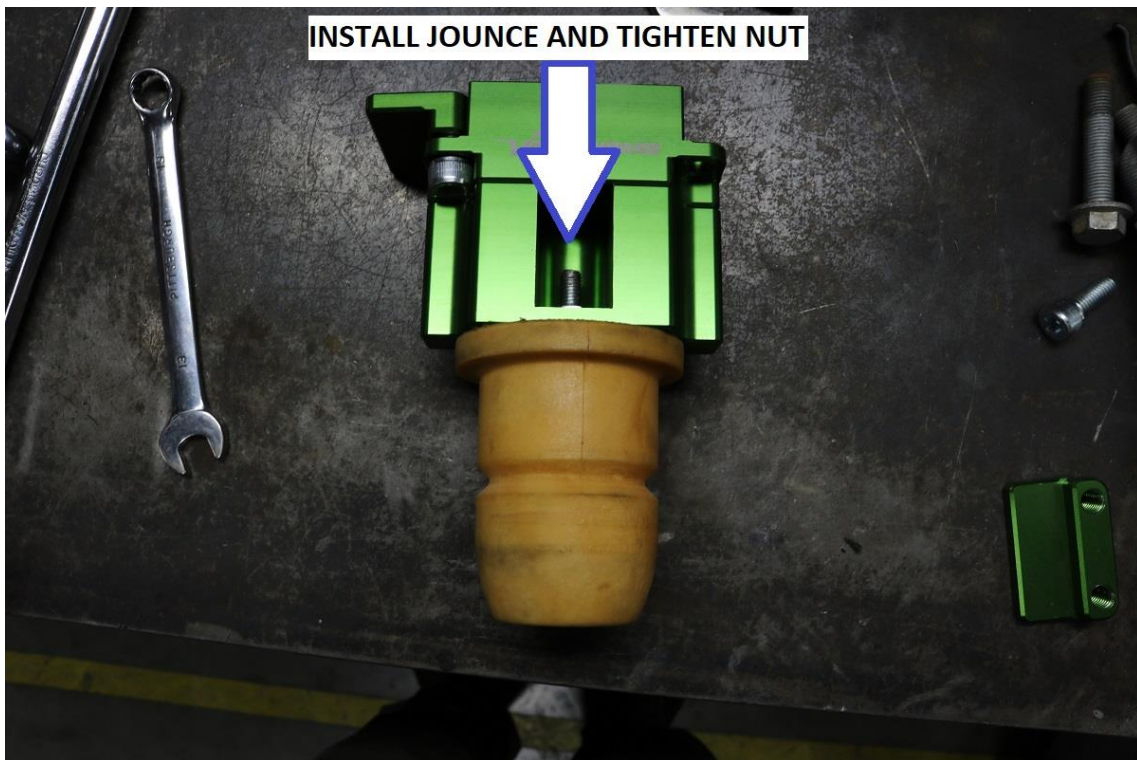


Steps 6-7 are for Striker lift kit equipped vehicles. Proceed to step 8 if vehicle does not have a VC Striker 2" lift.

- 7) If installing this kit on a vehicle equipped with a Van Compass 2" Striker lift kit. Install the 307601 spacer between the billet base adapter and jounce. Secure using the included M10-1.50 x 25mm long socket cap screws. Tighten to 25 ft-lbs (34 N.m) with an 8mm allen wrench.



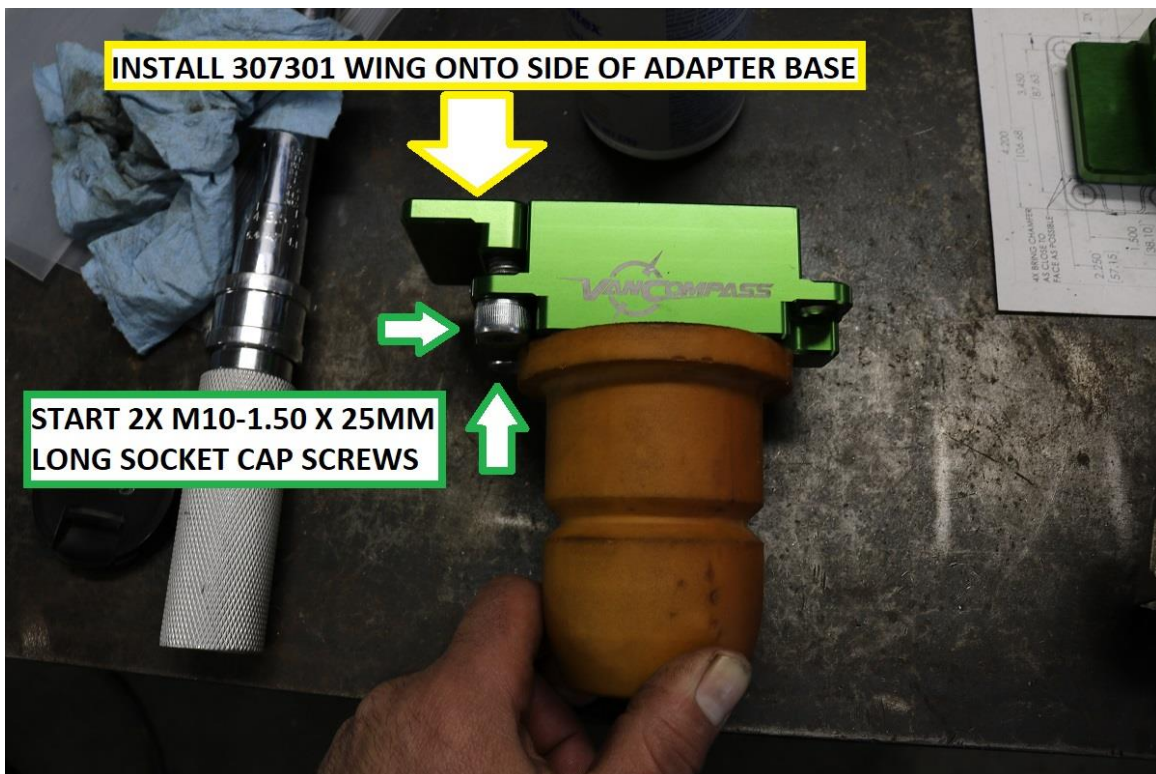
- 8) Fit the Jounce to the 307601 spacer as shown below. Install a washer under the nut and tighten with a 13mm socket to 15 ft-lbs (20 N.m)



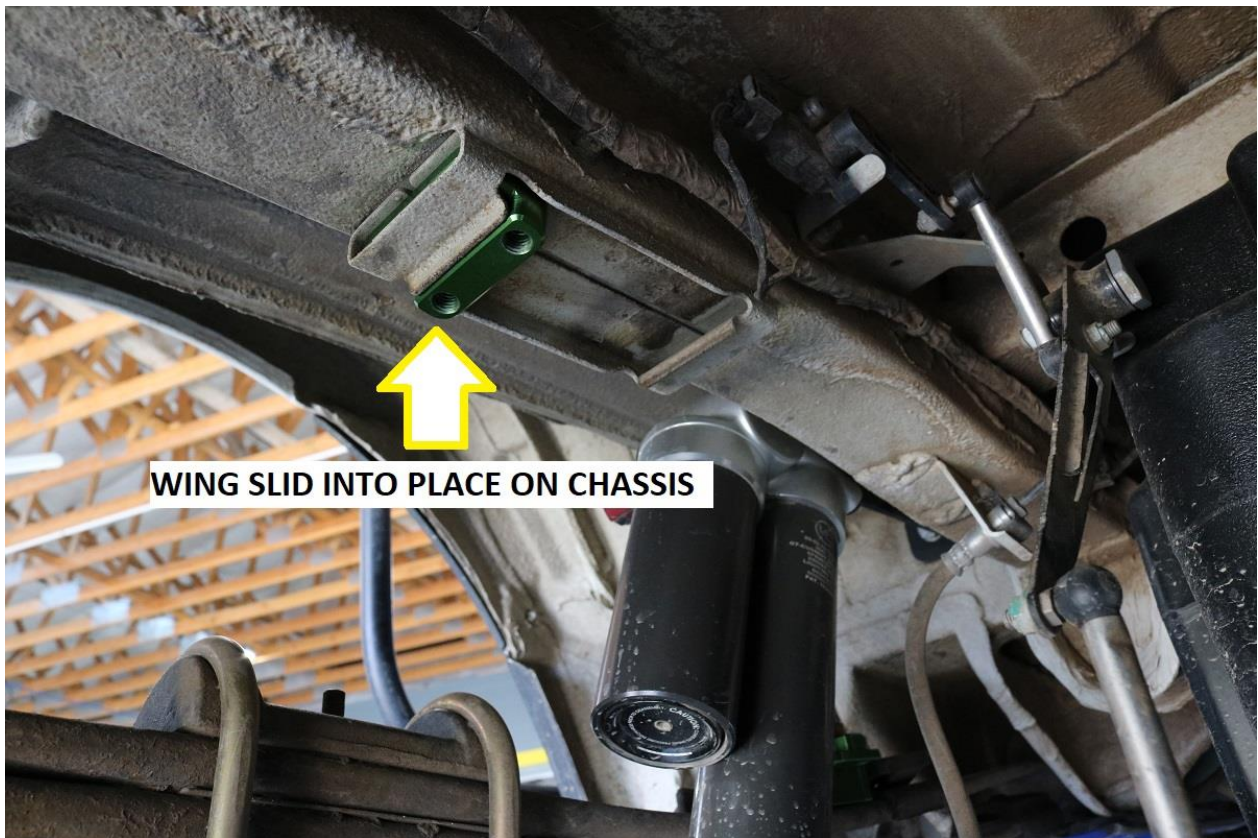
- 9) Assemble the upper Jounce adapter as shown in the images below. Fit the jounce to the chassis side base bracket as show. Install a washer under the nut and tighten with a 13mm socket to 15 ft-lbs (20 N.m)



- 10) Loosely install one of the 307301 “wing” brackets to the main adapter jounce brace as shown. Utilize the included M10-1.50 x 25mm long socket cap screws. Just thread the bolts in 2-3 rotations to start.



- 11) Fit a 307301 “wing” into the factory bump stop location on the chassis as shown below. You can install the wing onto the chassis at either the front or rear lip for the factory jounce.
- a. The wing bracket should stay in place as shown in the images below.

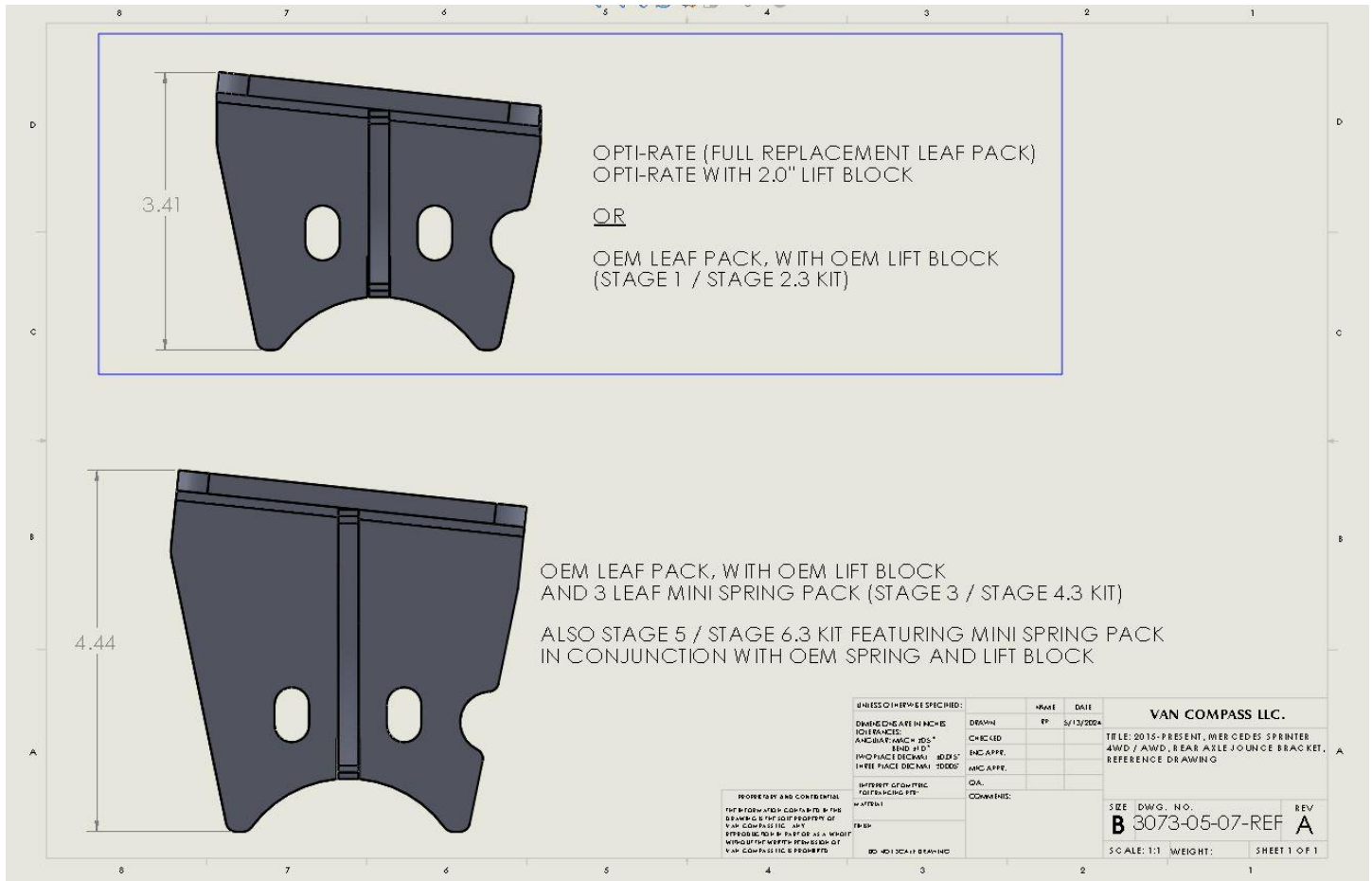




- 12) Fit the Jounce / adapter / wing assembly from step 8 onto the vehicle. Slide the assembly into place opposing the wing already fitted to the factory jounce mounting point. Start the included M10-1.50 x 25mm long socket cap screws onto the wing fitted onto the vehicle.
- b. Evenly snug all screws with an 8mm allen wrench.
  - c. Snug bolts evenly to the point where the wings are starting to pull down on the OEM jounce mounting points. At this point, give each bolt an additional  $\frac{1}{2}$  turn.
    - i. If an inch pound torque wrench is available, 30-40 in-lbs is the target range.
  - d. It is normal for a gap to remain between the wing and the main adapter base.

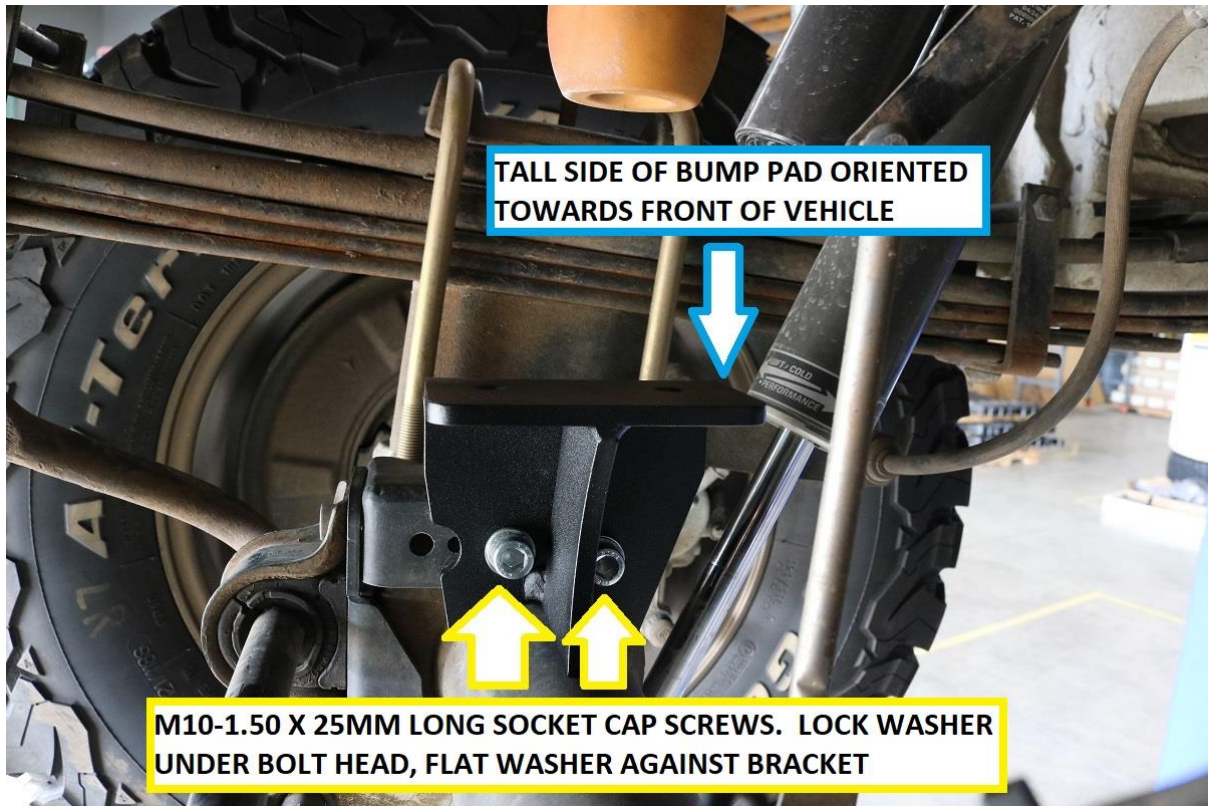


13) Moving to the axle side, first determine which jounce pad will be installed for the vehicle. Please see the drawing below as well as the Configuration guide at the start of these instructions as to what configuration will be run depending on the rear suspension configuration.



14) Install the corresponding rear axle jounce pad to the vehicle. Note, the jounce pads are left and right specific as well. When installed, the taller portion of the pad should be at the front of the vehicle.

- Secure axle jounce pad to the vehicle using the included M10-1.50 x 25mm long socket cap screws. Utilize a lock washer under the bolt head, followed by a flat washer.
- Torque the bolts using an 8mm allen to 40 ft-lbs (54 N.m)



- 15) Repeat installation on the passenger side of the vehicle if not already completed.
- 16) Re-install rear wheels and tires if removed for installation and torque to wheel mfg's specifications.
- 17) Re-check torque specs after 100 miles of driving.

### Installation is Complete

### RELEASE OF LIABILITY

I, the customer, do hereby release and forever discharge Van Compass LLC, their agents, employees, successors and assigns, and their respective heirs, personal representatives, affiliates, successors and assigns, and any and all persons, firms or corporations liable or who might be claimed to be liable, whether or not herein named, from any and all claims, demands, damages, actions, causes of action or suits of any kind or nature whatsoever, whether known or unknown, fixed or contingent, which I now have or may hereafter have or claim to have, as a result of or in any way relating to the following: Parts sold & installed by Van Compass LLC or parts sold & installed by end-user; any parts sold online, any parts sold online or installed by a re-seller, any parts installed by an installation shop.

It is understood and agreed that this payment is made and received in full and complete settlement and satisfaction of the aforesaid actions, causes of action, claims and demands; that this Release contains the entire agreement between the parties; and that the terms of this Agreement are contractual and not merely a recital. Furthermore, this Release shall be binding upon the undersigned, and his respective heirs, executors, administrators, personal representatives, successors and assigns. This Release shall be subject to and governed by the laws of the State of Idaho.

### PRODUCT SAFETY WARNING:

Van Compass LLC strongly recommends the installation of products be done by a certified mechanic. If this does not occur, be certain the person(s) installing the product read, understand and follow all instructions and warnings pertaining to the application before installation. Do not add, alter, or fabricate any factory or aftermarket parts to increase vehicle height over the intended height of the Van Compass LLC product purchased. Mixing component brands is not recommended.

Installation of suspension lift kits or any other lifting kits or devices will raise the center of gravity. For this reason, Van Compass LLC urges that extreme caution be used when encountering driving conditions which may cause vehicle imbalance. Furthermore, the driver's field of vision and judgment will not be as good due to the height of the vehicle. Due to the installation of larger tires, the speedometer will read slower than the actual speed being traveled and more distance will be required to stop the vehicle. It is the owner's responsibility to caution and warn any potential driver of the vehicle about these driving and handling conditions. Van Compass LLC will not be held liable or responsible for damages or personal injuries resulting from the use of lifting devices and or related products. The tires and rims should be changed to sufficiently increase the vehicle's total overall width and stability to help accommodate lifting devices.

Van Compass LLC aftermarket suspension products and accessories modify a vehicle for uses which exceed conditions anticipated by the vehicle manufacturer. The uses include the high performance demands required during off-road. These conditions vary in the degree of extremity and cannot be controlled by the vehicle or product manufacturer. If the components within the suspension system or accessories become worn due to frequent and/or extreme use, the safety and reliability of the vehicle is at risk. The maintenance of aftermarket equipment to ensure the vehicle occupants safety is entirely your responsibility. Do not purchase Van Compass LLC products unless you are willing to accept this responsibility. Do not install any Van Compass LLC suspension products or accessories unless you feel competent at installing the product without causing present or future injury to yourself or other vehicle occupants; seek an authorized installation center.

Most states have some type of law limiting vehicle height. The amount of lift allowed, and how the lift can be achieved, varies greatly. Several states offer exemptions for farm and commercial registered vehicles. It is the vehicle owner's responsibility to check state and local laws to ensure that their vehicle will be in compliance. Van Compass LLC reserves the right to make changes in design, materials and specifications as deemed necessary without prior notice and without assuming obligation to modify any product previously manufactured. Obligation or liabilities will not be assumed with respect to similar products previously advertised.

This Release of Liability and Product Safety Warning has been read and fully understood by the undersigned and has been explained to me.