

Polaris 2024 Xpedition Tailgate Extension

Thank you for choosing Rough Country for all your vehicle needs.

Please read instructions before beginning installation. Check the kit hardware against the kit contents shown below. Be sure you have all needed parts and know where they go.

If question exist, please call us @1-800-222-7023. We will be happy to answer any questions concerning this product. Check all fasteners for proper torque. Check to ensure for adequate clearance between all components. Periodically check all hardware for tightness.

KIT CONTENTS:

- Base Plate x1
- Rear Extension Panel x1
- Rear Gate x1
- Driver Extension Panel x1
- Passenger Extension Panel x1
- Bolt plate x2

TOOLS NEEDED:

- 4mm Allen Wrench
- 10mm Wrench or Socket
- 13mm Wrench or Socket

HARDWARE INCLUDED:

- Bump Stop x4
- Bolt Plate x2
- Fluted Knobs x2
- Spacers x8
- 6mm-1.0 x 20mm Allen Head Bolt x4
- 6mm Flat Washer x8
- 6mm Nylock Nut x4
- 8mm-1.25 x 25mm long Hex Head Bolt x6
- 8mm Nylock Nut x8
- 8mm-1.25 x 30mm Hex Head Bolt x2
- .250-20 x .625 Button Head x4
- .250-20 x .750 Button Head Bolt x2



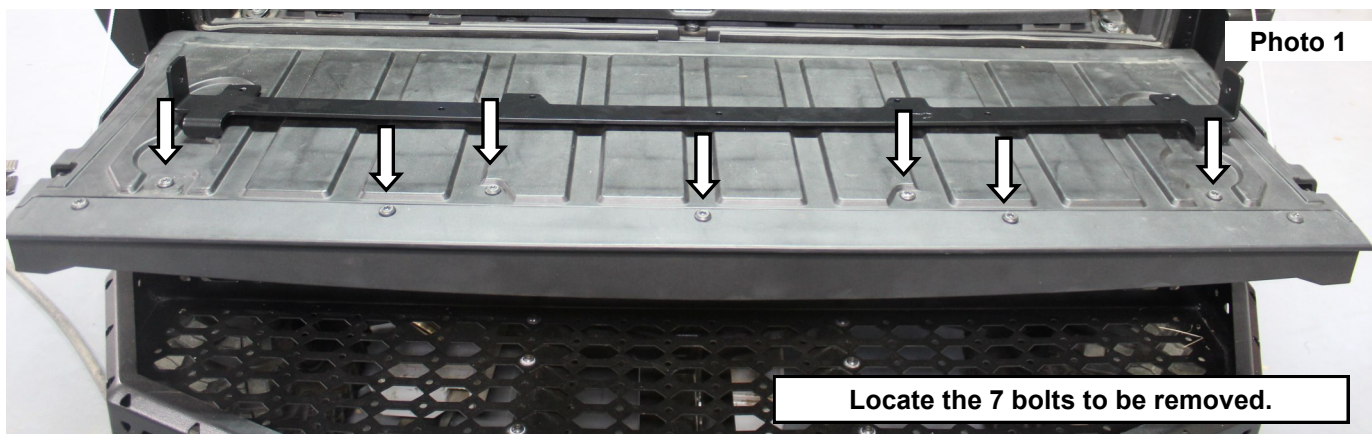
Torque Specs:

Size	Grade 5	Grade 8	Size	Class 8.8	Class 10.9
5/16"	15 ft/lbs	20ft/lbs	6MM	5ft/lbs	9ft/lbs
3/8"	30 ft/lbs	35ft/lbs	8MM	18ft/lbs	23ft/lbs
7/16"	45 ft/lbs	60ft/lbs	10MM	32ft/lbs	45ft/lbs
1/2"	65 ft/lbs	90ft/lbs	12MM	55ft/lbs	75ft/lbs
9/16"	95 ft/lbs	130ft/lbs	14MM	85ft/lbs	120ft/lbs
5/8"	135ft/lbs	175ft/lbs	16MM	130ft/lbs	165ft/lbs
3/4"	185ft/lbs	280ft/lbs	18MM	170ft/lbs	240ft/lbs

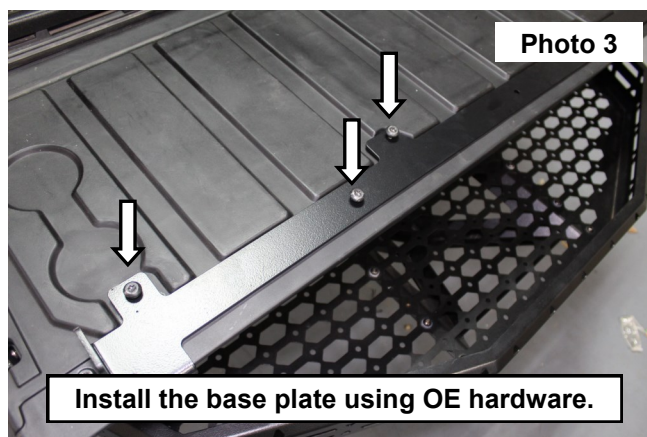
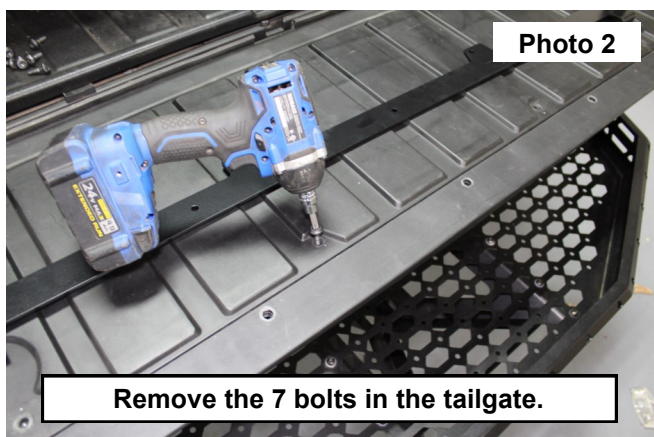


INSTALLATION INSTRUCTIONS

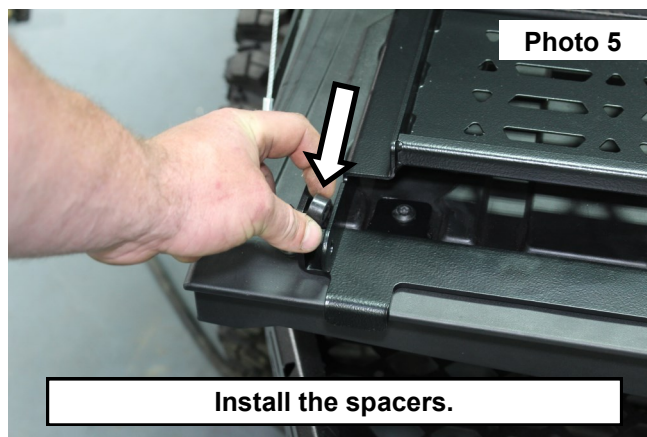
1. Open the tail gate and locate the (7) bolts that will need to be removed. **See Photo 1.**



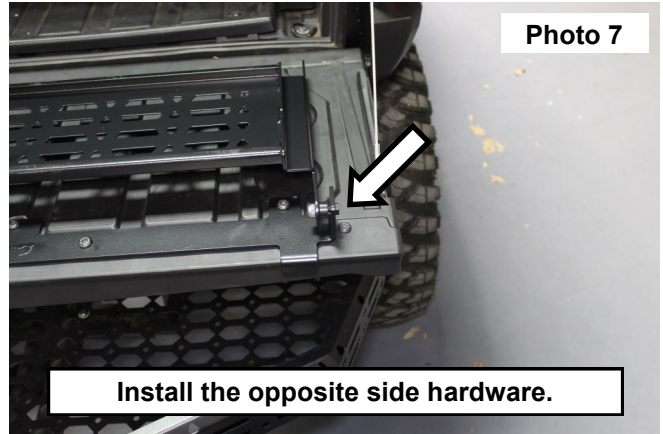
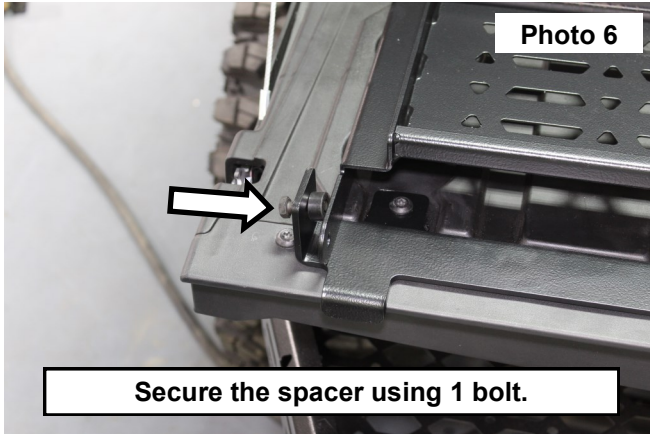
2. Remove the (7) bolts using a T40 Torx Bit. Retain the factory hardware. **See Photo 2.**
3. Place the base plate over the end of the tailgate. Use the (7) OE bolts to secure the bracket. Tighten using a T40 Torx Bit. **See Photo 3.**



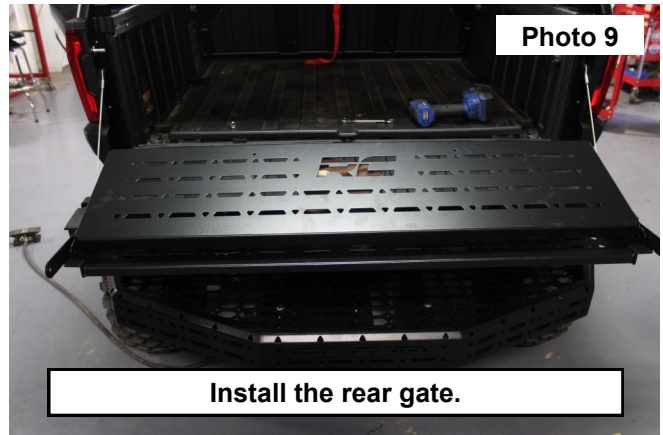
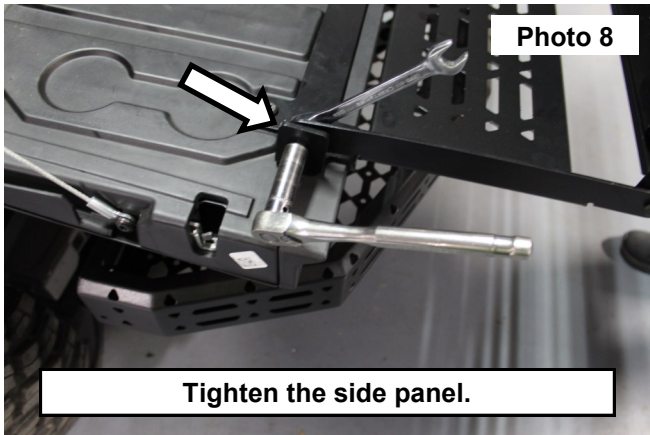
4. Place the rear extension panel onto the tailgate of the UTV and align it with the base plate. **See Photo 4.**
5. Place (1) spacer in-between the base plate and the rear extension panel. **See Photo 5.**



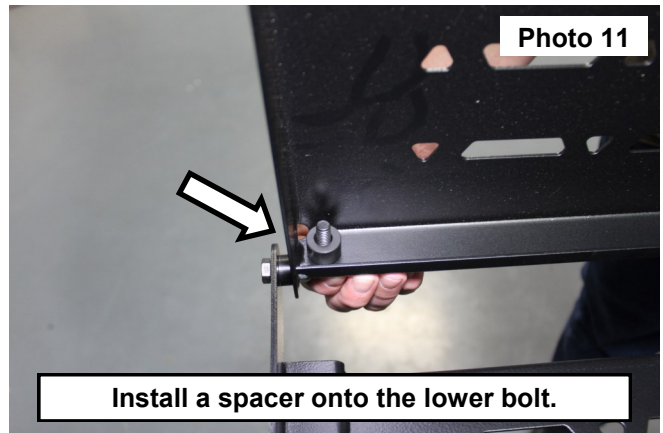
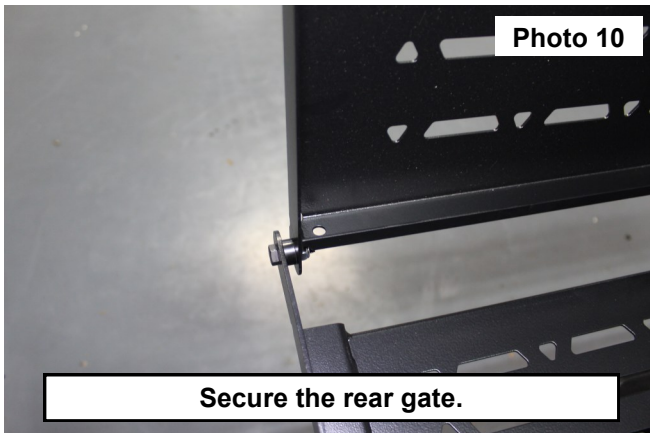
- Secure the spacer using (1) 8mm hex bolt and (1) 8mm nylock nut. **See Photo 6.**
- Secure the opposite side of the extension panel using (1) 8mm hex bolt, (1) spacer and (1) nylock bolt. **See Photo 7.**



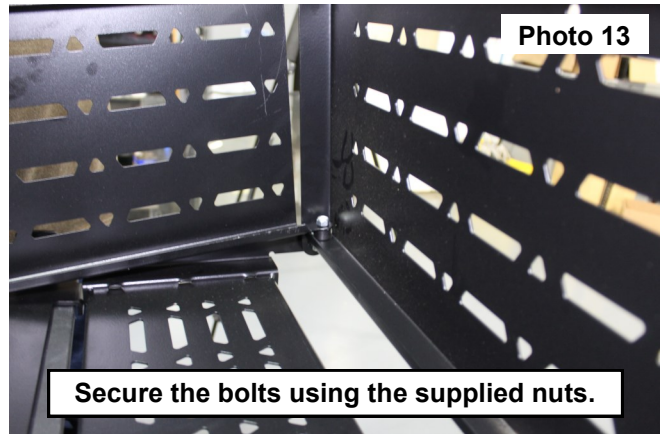
- Tighten each side of the extension panel. Ensure that the extinction panel can still fully open and close with ease. **See Photo 8.**
- Place the rear gate in-between the extinction panel tabs. **See Photo 9.**



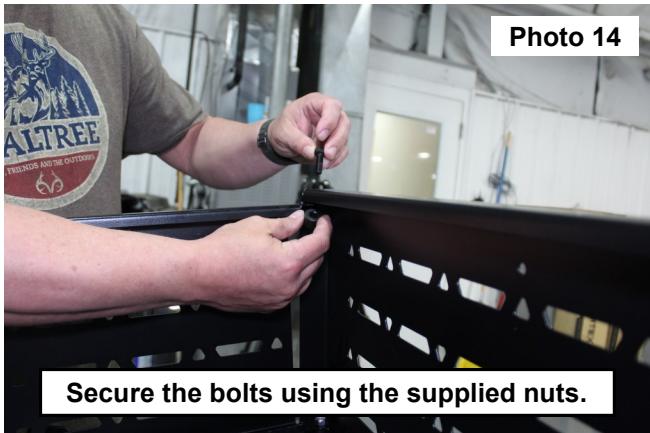
- Secure each side using (1) 8mm hex bolt, (1) spacer and (1) 8mm nylock nut. Tighten each side of the rear gate. Ensure that the rear gate can still fully open and close with ease. **See Photo 10.**
- Place (1) 8mm hex bolt and (1) spacer into the rear gate. **See Photo 11.**



12. Place the passengers side extension panel on to the bolt and spacer in the rear gate. **See Photo 12.**
13. Secure the lower bolt using (1) of the supplied nylock nuts. **See Photo 13.**



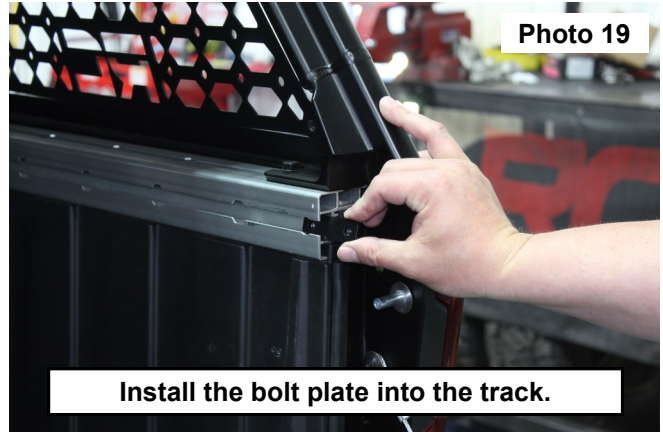
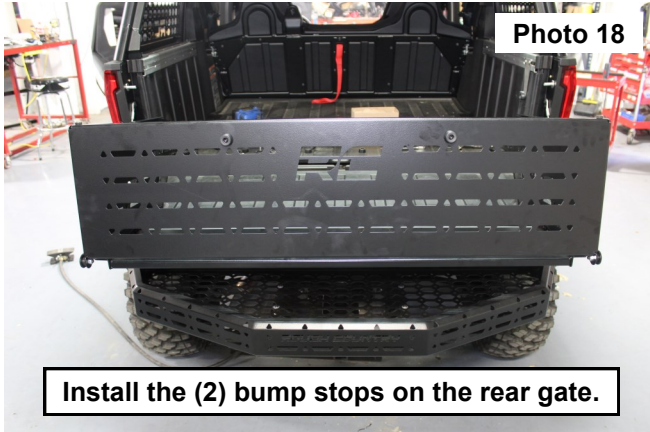
14. Secure the top of the passengers side extension panel using (1) 8mm hex bolt, (1) spacer and (1) 8mm nylock nut. **See Photo 14.**
15. Tighten the upper and lower bolts using a 13mm wrench and socket. **See Photo 15.**



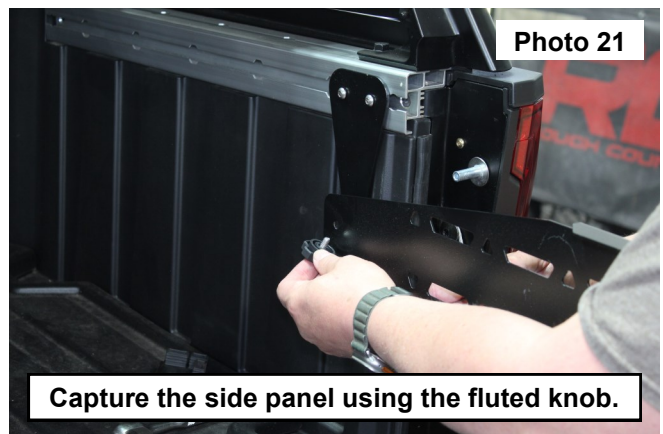
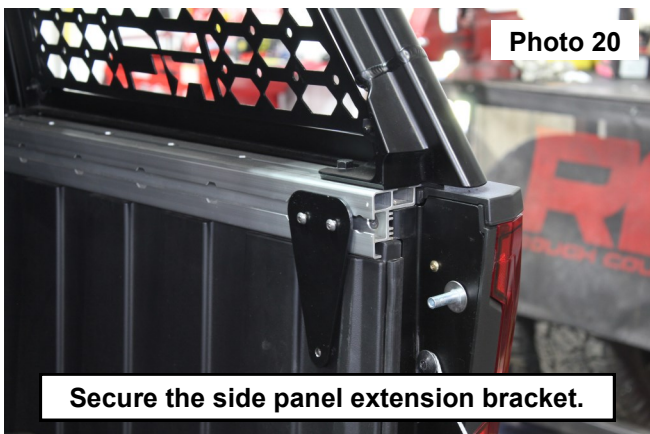
16. Install the bump stop on the front of the outside passengers side extension panel using (1) 6mm hex bolt, (2) 6mm Flat washers (1) bump stop and (1) 6mm nylock nut. Tighten using a 4mm and a 10mm socket. **See Photos 16 and 17.**
17. Install the Driver side extension panel using steps 11-16.



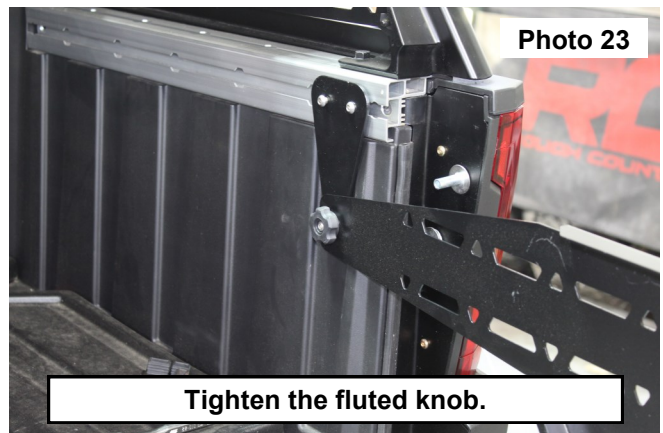
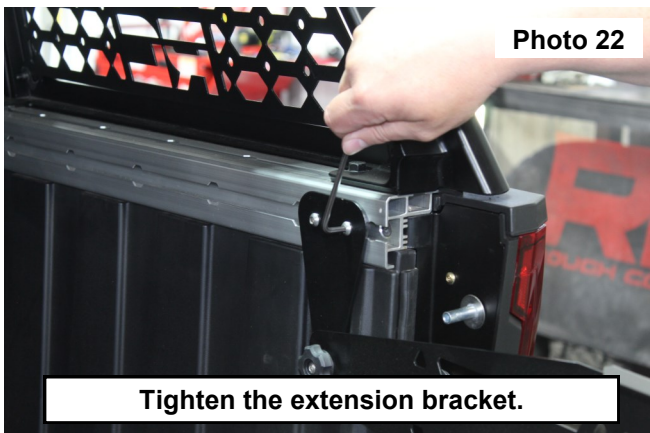
18. Install the (2) bump stops on the rear gate using (1) 6mm hex bolt, (2) 6mm Flat washers (1) bump stop and (1) 6mm nylock nut on each of the bump stops. Tighten using a 4mm and a 10mm socket. **See Photo 18.**
19. Remove the aluminum tracks end cap and install the bolt plate into the track. **See Photo 19.**



20. Using (2) 6mm button head bolts, secure the side panel extension bracket to the bolt plate. Snug bolts only. **See Photo 20.**
21. Using the supplied fluted knob and (1) 1/4-20 bolt. Place the side panel to the extension bracket. **See Photo 21.**



22. Tighten the extension bracket to the bolt plate using a 4mm Allen wrench. **See Photo 22.**
23. Tighten the fluted knob. **See Photo 23.**



24. When closing the tailgate extension, place the fluted knobs back into the extension brackets.

By purchasing any item sold by Rough Country, LLC, the buyer expressly warrants that he/she is in compliance with all applicable, State, and Local laws and regulations regarding the purchase, ownership, and use of the item. It shall be the buyers responsibility to comply with all Federal, State and Local laws governing the sales of any items listed, illustrated or sold. The buyer expressly agrees to indemnify and hold harmless Rough Country, LLC for all claims resulting directly or indirectly from the purchase, ownership, or use of the items.

