

DIRECT-REPLACEMENT
INSTALLATION GUIDE



GM 1500 (2019+)

985-02-134: 19-ON GM 1500 Front Coilover, PS, 2.0, IFP, NON-TB/NOT-AT4 0-2" Lift, TB/AT4 NO" Lift

985-24-209: 19-ON GM 1500 Rear, PS, 2.0, IFP, NON-TB/NON-AT4 0-2" Lift, TB/AT4 NO" Lift

883-06-157: KIT: 19-On GM 1500 Front Coil-Over, 2.5 Series, AL, R/R, 5.3", DSC, NON-TB/NON-AT4 0-2" LIFT, TB/AT4 NO" Lift

883-06-162: KIT: 19-On GM 1500, w/UCA, Front Coil-Over, 2.5 Series, AL, R/R, 6.0", DSC, NONTB/NON-AT4 3.5" LIFT, TB/AT4 1.5" Lift

883-26-060: KIT: 19-On GM 1500, Rear, 2.5 Truck FRS, R/R, 9.6", 0-2" Lift, DSC, NON-TB/NON-AT4



GM 1500 2.5 SERIES

GM 1500 (2019+)

883-06-157: KIT: 19-On GM 1500 Front Coil-over, 2.5 Series, AL, R/R, 5.3", DSC, NON-TB/NON-AT4 0-2" LIFT, TB/AT4 NO" Lift

883-06-162: KIT: 19-On GM 1500, w/UCA, Front Coil-over, 2.5 Series, AL, R/R, 6.0", DSC, NONTB/NON-AT4 3.5" LIFT, TB/AT4 1.5" Lift

883-26-060: KIT: 19-On GM 1500, Rear, 2.5 Truck FRS, R/R, 9.6", 0-2" Lift, DSC, NON-TB/NON-AT4

Thank you for choosing FOX direct-replacement shocks for your vehicle. FOX products are designed, tested, and manufactured by the finest professionals in the industry.

FOX recommends that you become completely familiar with the handling characteristics of your modified vehicle before operating it under rigorous conditions, helping to avoid potential rollover situations and other loss of control events. FOX further recommends that you use appropriate protective equipment at all times when operating your vehicle.

To achieve the best performance and product longevity, periodic service and maintenance is required. Please refer to the Service and Upgrades section for more information.

Table of Contents

SAFETY WARNINGS	2
INSTALLATION GUIDELINES	2
INSTALLATION FRONT	3-10
INSTALLATION REAR	10-16
FACTORY SETTINGS	17
WARRANTY	18
SERVICE INTERVALS	19

SAFETY INSTRUCTIONS

WARNING

- FOX direct-replacement shocks are designed to fit and allow proper clearance with the stock suspension. If aftermarket suspension components are installed it is the customer's responsibility to ensure that at full cycle the suspension clears the FOX shocks.
- FOX direct-replacement shocks should always be installed as a pair for maximum performance.
- Proper installation and service procedures are essential for the safe and reliable installation of chassis parts, requiring the experience and tools specially designed for this purpose. Installation and maintenance procedures for this product must be performed by a qualified service technician, to avoid potentially unsafe vehicle handling characteristics, which may result in **SERIOUS INJURY** or **DEATH**.
- Modifying your vehicle's suspension will change the handling characteristics of your vehicle. Under certain conditions, your modified vehicle may be more susceptible to loss of control or rollover, which can result in **SERIOUS INJURY** or **DEATH**. Thoroughly familiarize yourself with the modified vehicle handling characteristics before any rigorous vehicle operation. Wear body protective gear including head protection when appropriate. Installation of vehicle roll bars or cage is highly recommended.
- FOX direct-replacement shocks are gas-charged and are highly pressurized. Placing shocks in a vise or clamp, applying heat, or attempting to open or service the shock without the proper tools and training can result in **SERIOUS INJURY** or **DEATH**. Do not attempt to modify, puncture or incinerate a FOX direct-replacement shock absorber.
- Any attempt to misuse, misapply, modify, or tamper with any FOX product voids any warranty and may result in **SERIOUS INJURY** or **DEATH**.

INSTALLATION GUIDELINES

WARNING

- Always use a chassis lift for the installation of shocks, and make certain that the raised vehicle is securely attached to the lift to prevent the vehicle from slipping, falling, or moving during the installation process.
- **DO NOT** install any FOX product without the necessary special tools, expertise and chassis lift, or you will subject yourself to the risk of **SERIOUS INJURY** or **DEATH**. If you elect to not use a chassis lift (which election may result in **SERIOUS INJURY** or **DEATH**), ensure that the vehicle is on level ground, that all tires on the ground during installation are blocked to prevent vehicle movement, that at least two tires are on the ground at all times, and that adequately secured jack stands are used to support the vehicle. **NEVER** get under the vehicle until you have checked to ensure that the vehicle will be stable during installation.
- FOX direct-replacement shocks are designed to fit your vehicle's shock mounts with no modifications with the exception of reservoir placement on specific models and applications.
- If a preload adjustment is necessary for your application **DO NOT** adjust preload with the coil-over on the vehicle. Remove the coil-over from the vehicle and use a spring compressor to remove the spring hardware and spring. Once the spring is removed, you can adjust the preload ring. **DO NOT** Exceed more the 1/2" of additional preload. If more than 1/2" of preload is required, you will need to go up in spring rate or get a longer spring that fits the application.

SHOCK INSTALLATION INSTRUCTIONS - FRONT

Medium-strength thread locker is recommended on all bolts.

1. Please read the installation guidelines for instructions on how to properly lift and secure the vehicle.
2. Record the front vehicle ride height to ensure proper lift is attained after kit is installed. You will be able to make preload adjustments if needed (Spanner wrench required), READ INSTALLATION GUIDELINES ON HOW TO PROPERLY ADJUST PRELOAD!
3. Remove front wheels from vehicle.
4. Disconnect the sway bar end-link from the lower control arm of the vehicle (Figure 1).



Figure 1: Passenger side shown.

5. Disconnect the first ABS bracket on the upright, toward the front of the vehicle (Figure 2).



Figure 2: Passenger side shown.

6. Disconnect the second ABS bracket on the upright, toward the inside of the vehicle, behind the upright (Figure 3).

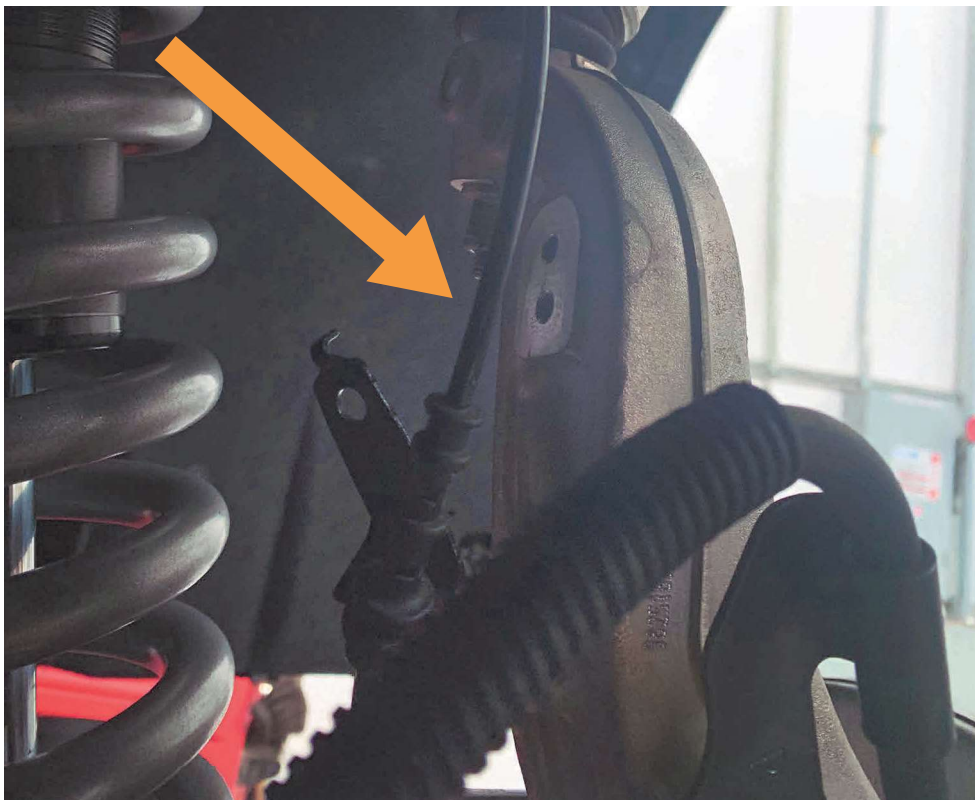


Figure 3: Passenger side shown.

7. Disconnect the outer tie rod end from the upright (Figure 4).



Figure 4: Passenger side shown

8. Disconnect upper control arm from the upright (Figure 5). Prior to releasing the nut from the upper control arm ball joint completely, be sure to support the upright so that it does not fall and cause damage.



Figure 5: Passenger side shown.

9. Remove the top (3) nuts that secure the top of the stock coil-over assembly to the vehicle. **DO NOT** remove center nut; doing so will release the spring from the stock assembly and could result in **SERIOUS INJURY** or **DEATH!**
10. Remove the (2) lower coil-over bolts connecting the shock to the lower control arm.
11. You can now remove the stock coil-over from the vehicle.
12. Repeat Steps 1-11 on both sides of the vehicle.
13. Once the stock coil-over is removed, you can now install your new FOX coil-over. With remote reservoir models make sure that the hoses are facing outward and toward the front of the vehicle (Figure 6). Connect the coil-over top hat to the vehicle with the provided washers and nuts. Tighten all three nuts to 24 FT-LBS.

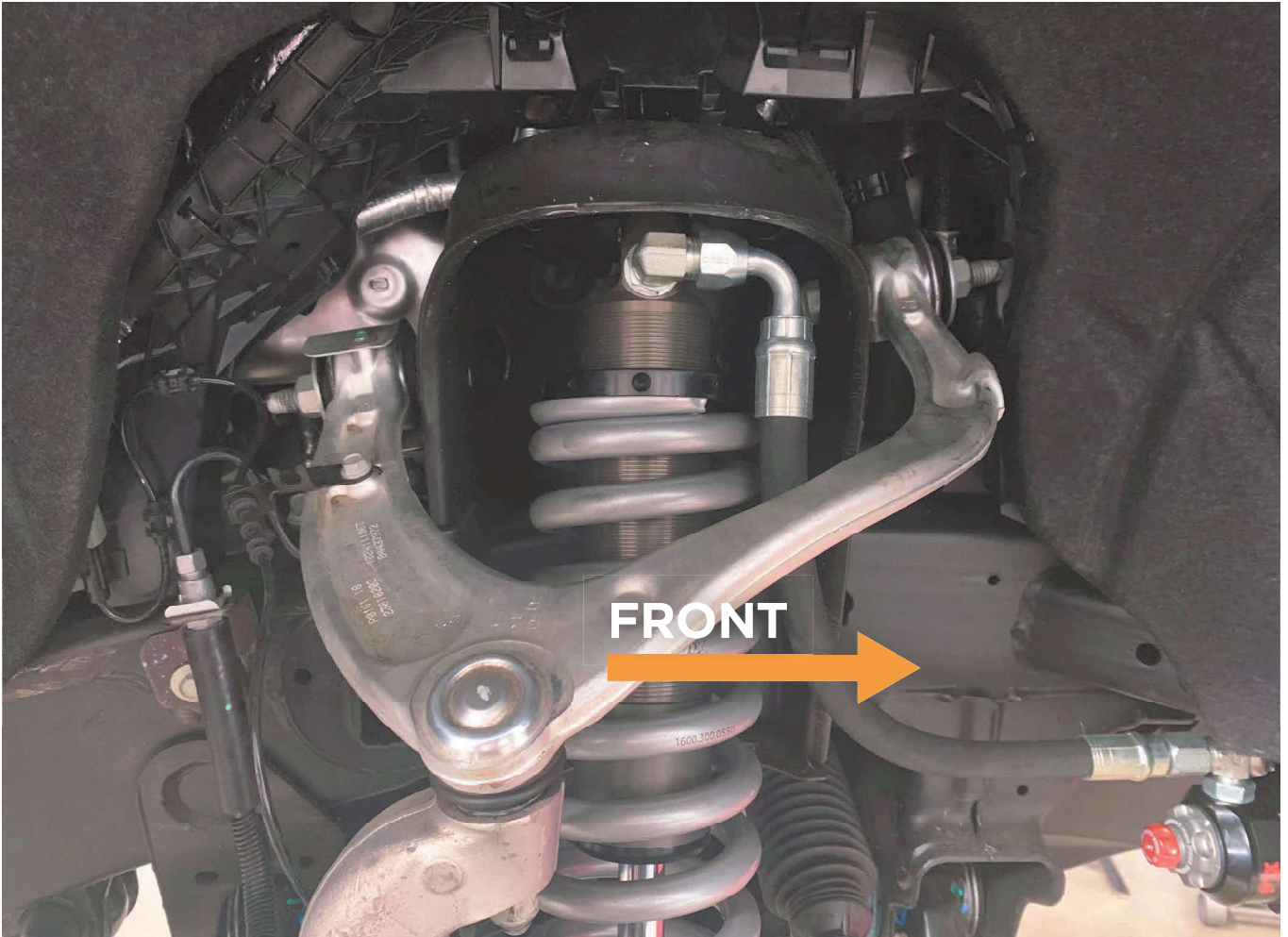


Figure 6: Passenger side shown.

14. Connect the coil-over to the lower control arm using the supplied 17mm bolts and washers. Torque to 50 FT-LBS.
15. Reinstall upper control arm to upright, sway bar link to the lower control arm, and reattach anywires previously removed from the upright. Torque to OEM specifications. **IF INSTALLING AFTERMARKET UPPER CONTROL ARM TO FIT 883-06-162, PLEASE INSTALL AT THIS TIME USING THE MANUFACTURERS INSTRUCTIONS.**
16. Reinstall the outer tie rod to the upright and torque the nut to OEM specifications.
17. Repeat Steps 13-16 on both sides of the vehicle.

18. On external reservoir models, mount the reservoir onto the reservoir bracket on the bottom of the frame rail, forward the front crossmember (Figure 7).



Figure 7: Passenger side shown.

19. Install the remote reservoir bracket using the factory skid plate bolt. Ensure that the remote reservoir bracket is installed under the skid plate. The larger hole on the bracket goes toward the rear of the vehicle. Torque to OEM specifications (Figure 8).

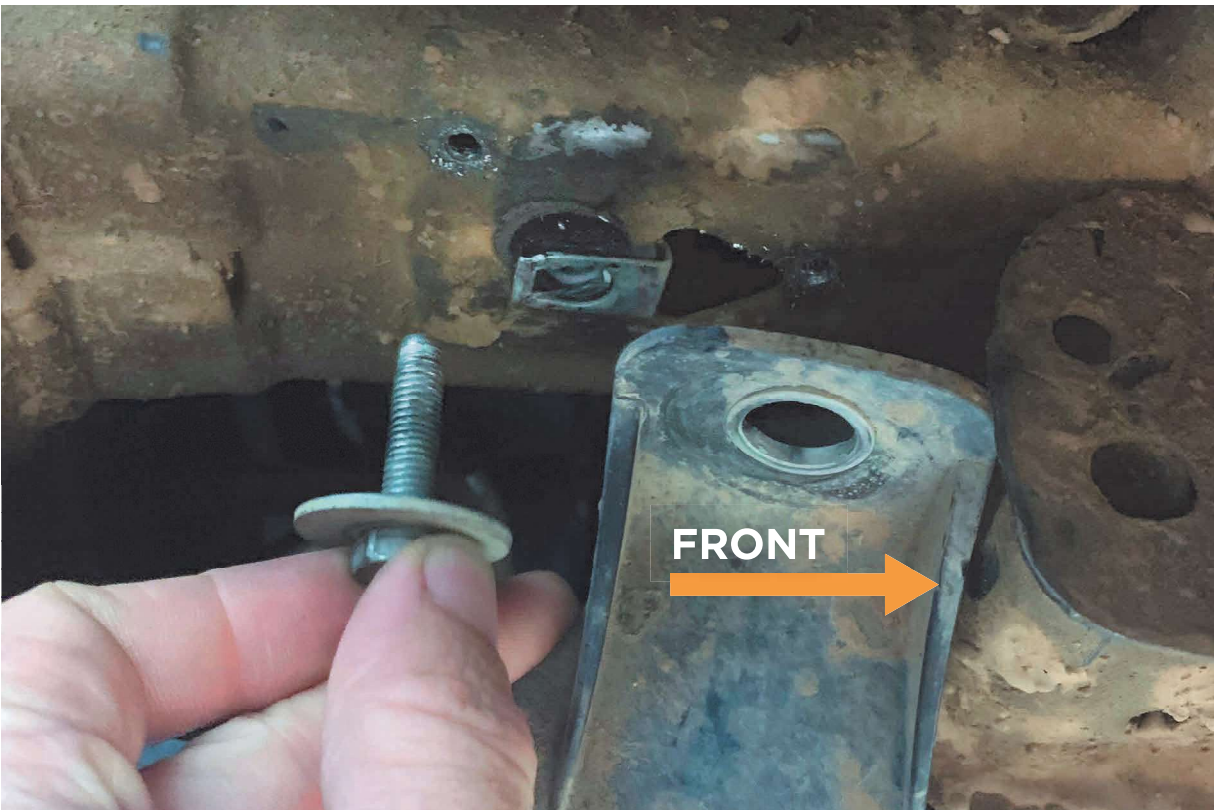


Figure 8: Passenger side bracket shown.

20. Using a 7/32" bit, drill a pilot hole for the provided self-tapping screw. This screw goes through the smaller hole on the reservoir bracket. This screw prevents rotation of the reservoir bracket (Figure 9).

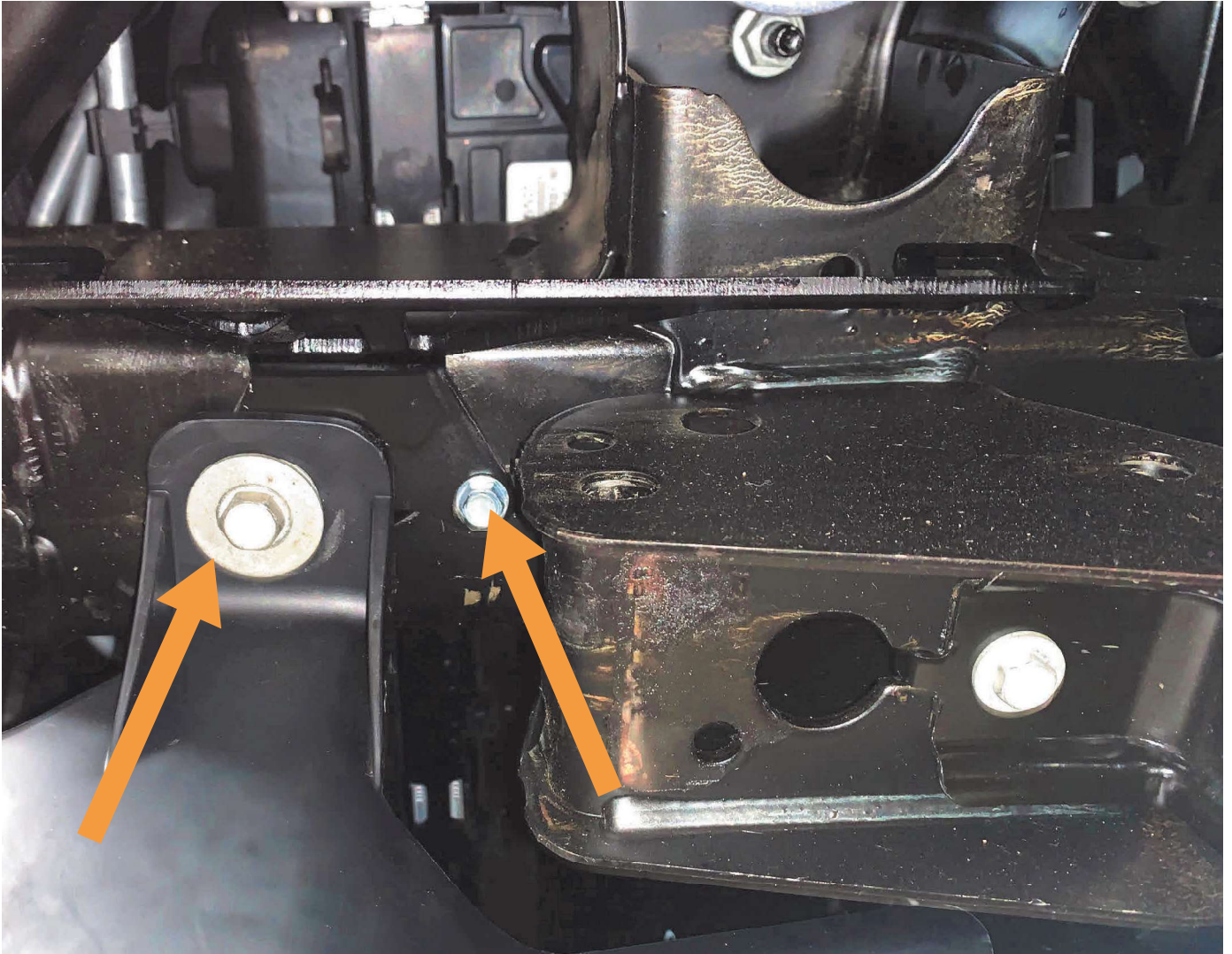


Figure 9: Passenger side shown.

21. Now fully install the reservoir bracket onto the vehicle using the supplied 3/4" self-tapping screws.
22. Repeat Steps 18-21 on both sides of the vehicle.

23. Using two supplied billet clamps and screws, mount the reservoir to the brackets. Utilize the slots in the bracket to locate clamps. Do not feed the clamps through the slots in the brackets. Torque the (4) four socket head cap screws to 19 IN-LBS. (Figure 10). Repeat on both sides of the vehicle.



Figure 10: Passenger side shown.

24. Installed coil-over will resemble Figure 11.

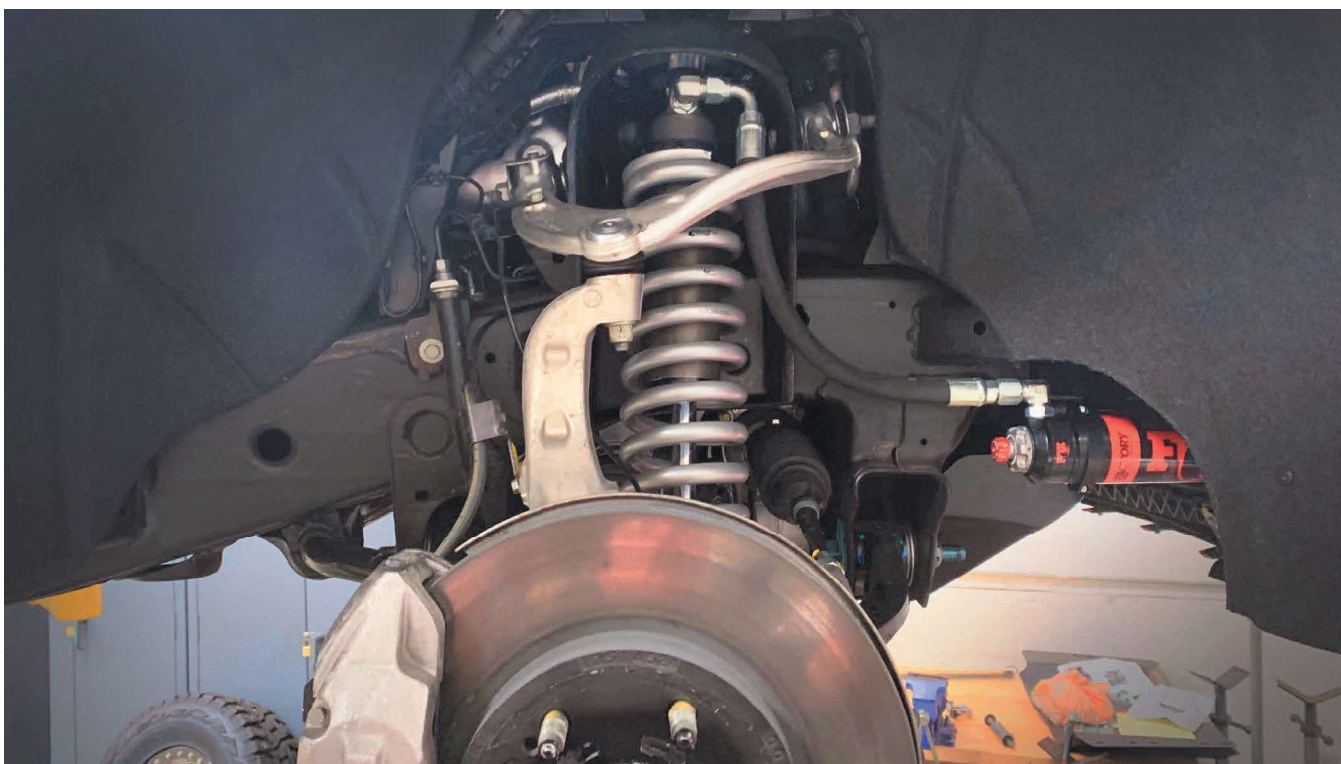


Figure 11: Passenger side bracket shown.

INSTRUCTIONS - FRONT (CONT.)

25. Check that the suspension has proper clearance by steering completely in both directions.
26. Reinstall front wheels and torque to OEM specifications.
27. Set vehicle back on the ground and drive it back and forth several feet to allow the suspension to settle. Now measure ride height and make adjustments if necessary. READ INSTALLATION GUIDELINES ON HOW TO PROPERLY ADJUST PRELOAD.
28. It is highly recommended that you have your wheel alignment checked.

INSTRUCTIONS - REAR

Medium-strength thread-locker is recommended on all bolts.

1. Please read the installation guidelines for instructions on how to properly lift and secure the vehicle.
2. Remove the rear wheels from vehicle.
3. Remove stock shocks. It may be necessary to support or raise the vehicle axle in order to remove bolts and for installation of new FOX shock. Do not discard bolts and nuts, as they will be used with your new FOX Shock.
4. For non-remote reservoir applications, install new Fox shocks reusing factory bolts and nuts. Torque to OEM specifications.
5. For remote reservoir applications, FOX highly recommends raising the rear of the bed of the vehicle $\frac{3}{4}$ " to prevent damage to the reservoir during the installation of the rear shocks. The reservoirs can be installed without raising the bed, however it is difficult and can cause cosmetic damage to the remote reservoirs on the shocks.
6. On 70-inch, short bed models, the bed is attached to the frame of the vehicle using (6) six bolts, (4) four rear bolts and (2) two front bolts (Figure 12). Longer beds may have more bolts attaching the bed to the frame.

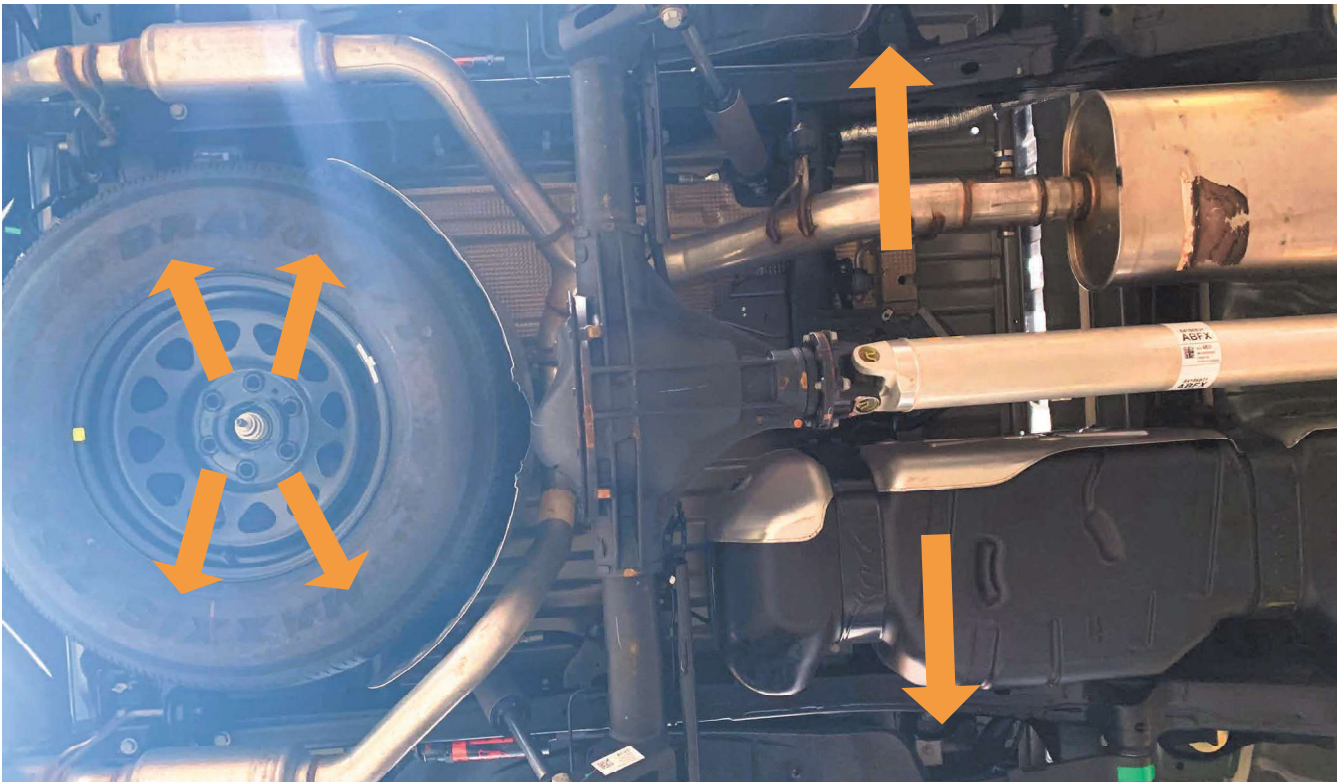


Figure 12: (4) rear bolts, (2) front bolts (70-inch bed shown).

7. Remove the rear bolts attaching the bed of the truck to the frame. DO NOT discard bolt bolts, as they will be used to reinstall the bed (Figure 13).



Figure 13: (Left) driver side, (Right) passenger side (70-inch bed shown).

8. Loosen the (2) most forward bolts of the bed. DO NOT remove. These bolts keep the bed aligned while you lift the rear of the bed to slide the reservoirs between the bed and the frame rail (Figure 14),

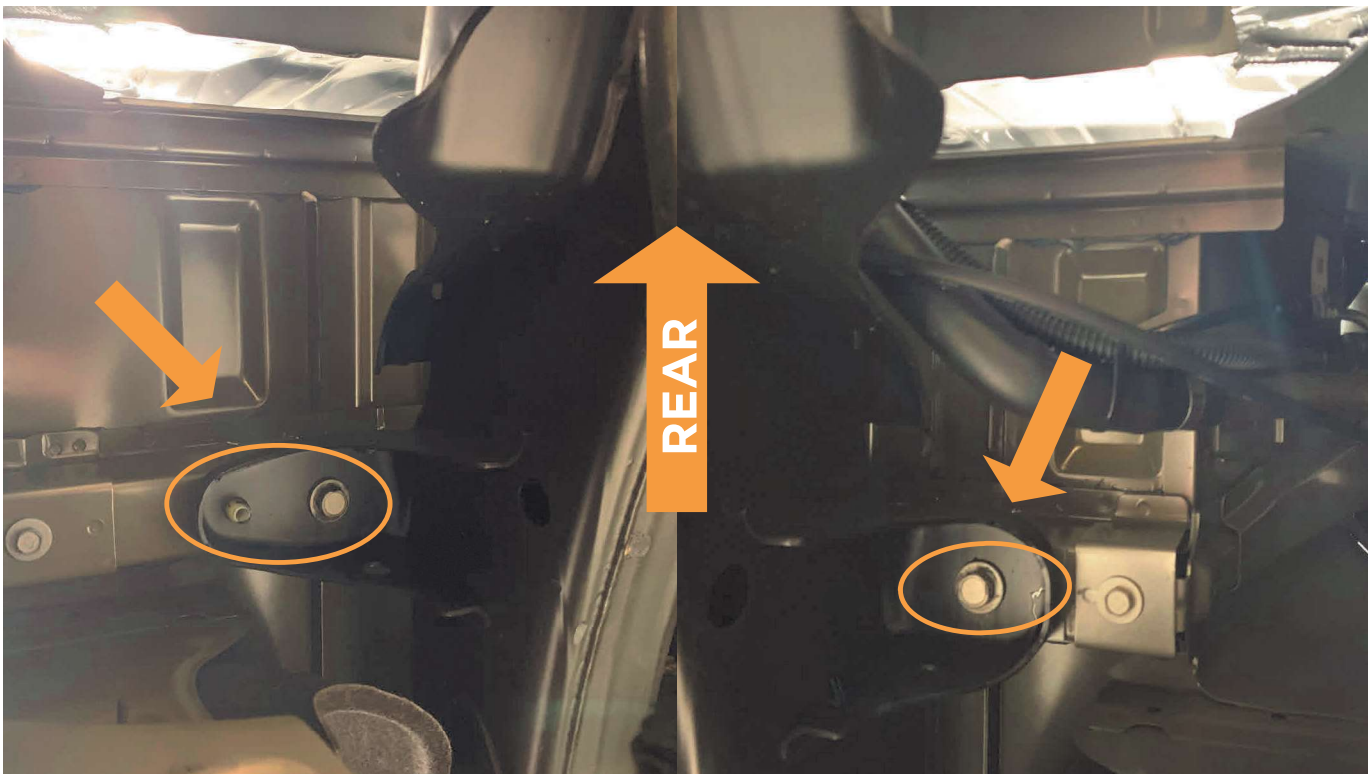


Figure 14: (Left) driver side, (Right) passenger side. (70-inch bed shown).

9. Once steps 1-7 are complete, slowly lift the rear of the bed from underneath the bed plate (Figure 15). Lift the bed $\frac{3}{4}$ " from the frame rail (Figure 16). DO NOT lift the bed from underneath the bedside as this may cause damage to the bedside. Be sure to check that the bed does not contact the cab of the truck as this could cause damage to the bed and the cab of the vehicle (Figure 17).

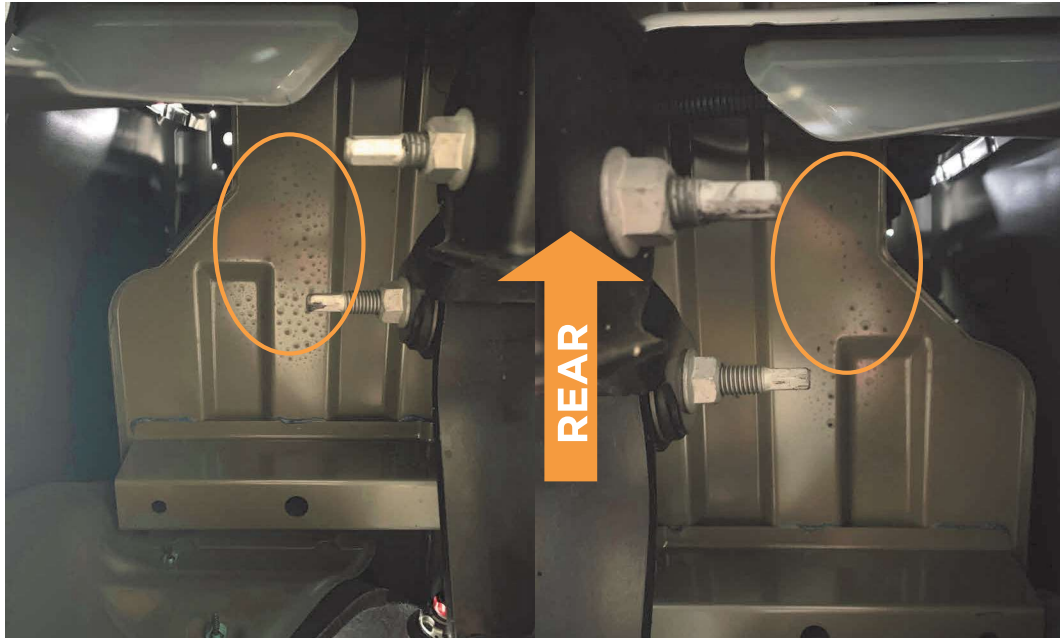


Figure 15: Circled rear bed lift points; (Left) driver side, (Right) passenger side (70-inch bed shown).



Figure 16: Bed is lifted $\frac{3}{4}$ " on both sides of the vehicle just above the bump stop (70-inch bed shown).



Figure 17: Rear of bed is raised $\frac{3}{4}$ " on both sides of the vehicle and not touching the cab (70-inch bed shown).

10. Make sure to identify which shock goes on the correct side (Figure 18).



Figure 18: (Left) driver side, (Right) passenger side.

11. Once the rear of the bed has been lifted off the frame, you can now slide the remote reservoirs between the bed (Figure 19).



Figure 19: Passenger side shown.

12. Once the reservoirs have been slid between the frame and the bed of the vehicle, slowly lower and reattach the bed to the vehicle using the OEM hardware. Torque to OEM specifications.
13. Using the OEM hardware install the upper and lower portions of the shocks on both sides of the vehicle.
14. You must trim the fender liners on both sides of the vehicle as shown in Figure 20 for the reservoirs to fit correctly. The suggested shape of the trimming follows the curvature of the forward most fender liner, continues just below the 2 screws and then back to the rear of the fender liner.



Figure 20: Passenger side shown.

15. The remote reservoirs mount to the vehicle using supplied mounting brackets toward the back of the vehicle in the wheel arch (Figure 21).



Figure 21: (Left) driver side, (Right) passenger side.

16. To install the rear reservoir brackets, you must drill a 7/32" hole that is 7" away from the edge of the OEM bump stop mount toward the rear of the vehicle and 3-3/4" above the bottom of the frame rail (Figure 22).

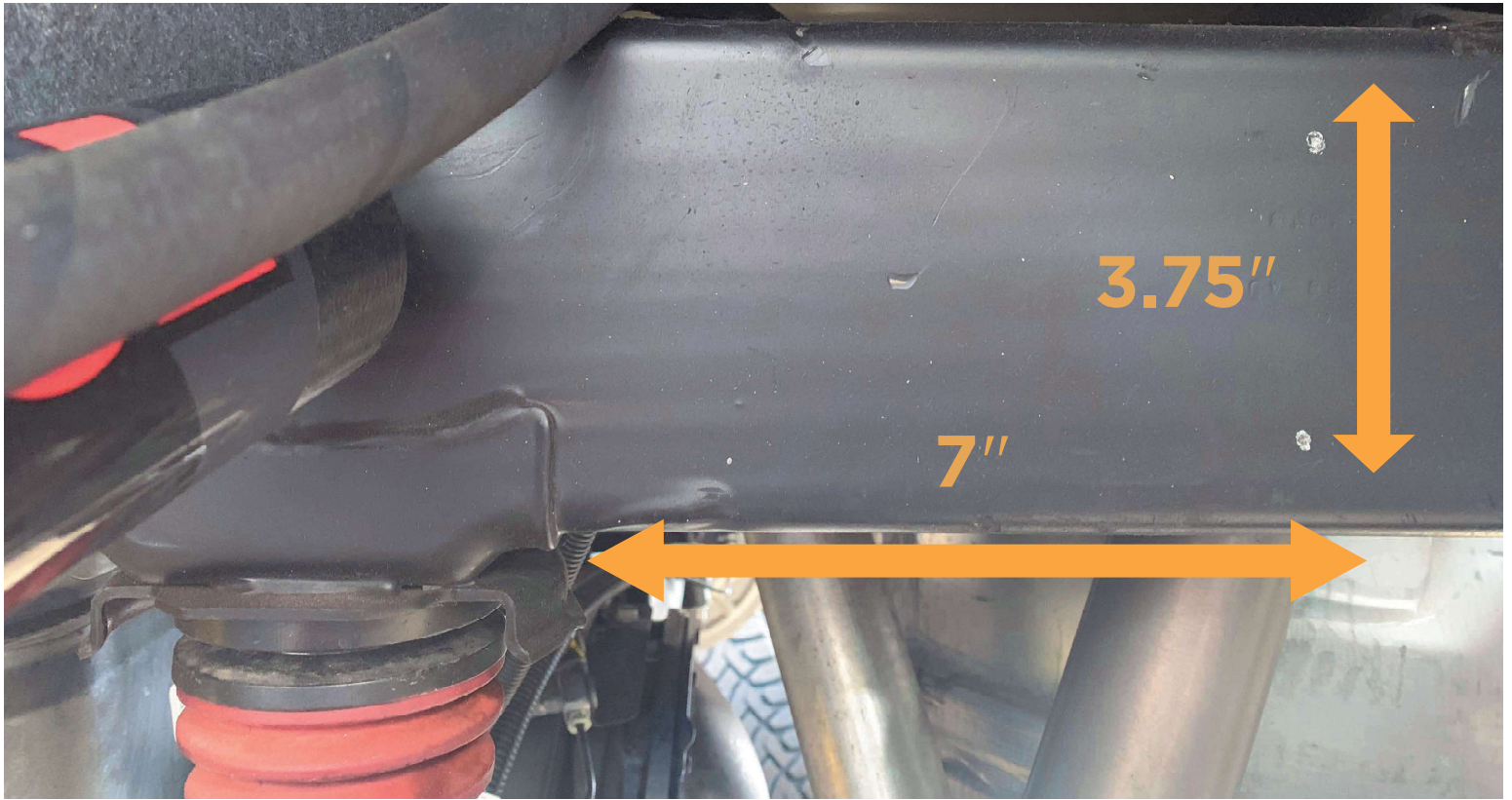


Figure 22: Driver's side shown.

17. Install the bracket using one of the 1/4" self-tapping screws to partially install the reservoir bracket. Ensure that you mount the bracket so that the forward most hole is the side that has the screw installed (Figure 23).



Figure 23: Passenger side shown.

18. Using the bracket as a guide, drill a 7/32" hole through the rear most hole of the reservoir bracket. Install the remaining ¼" self-tapping screw to fully install the reservoir bracket. There should be (2) two self-tapping screws in each bracket (Figure 24).



Figure 24: Passenger side shown.

19. Repeat steps 14-18 on both sides of the vehicle.

20. Using two supplied billet clamps and screws, mount the reservoir to the brackets. Utilize the slots in the bracket to locate clamps. Do not feed the clamps through the slots in the brackets. Torque the (4) four socket head cap screws to 19 IN-LBS. (Figure 25), Repeat on both sides of the vehicle.

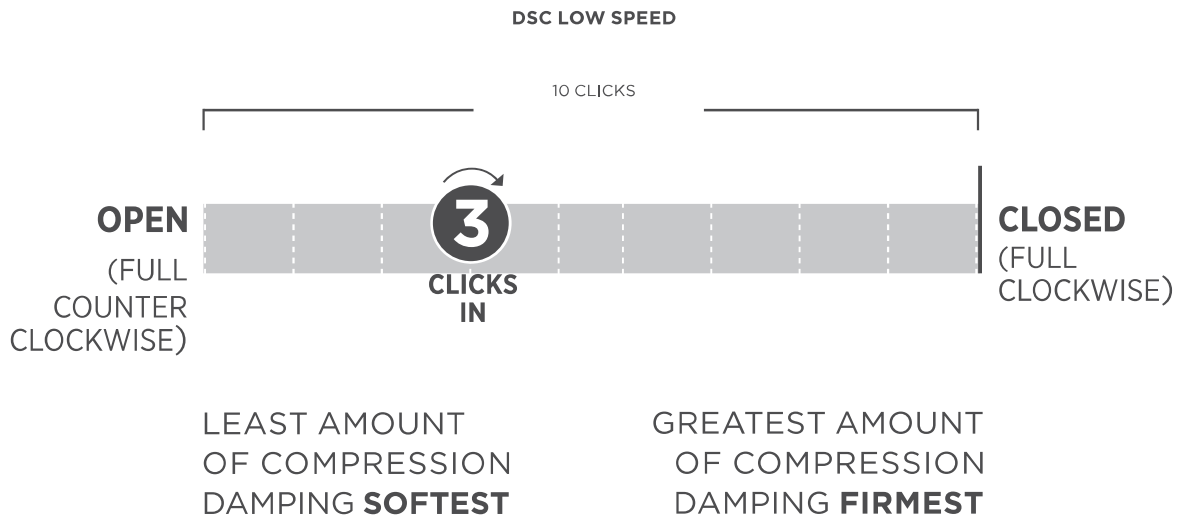
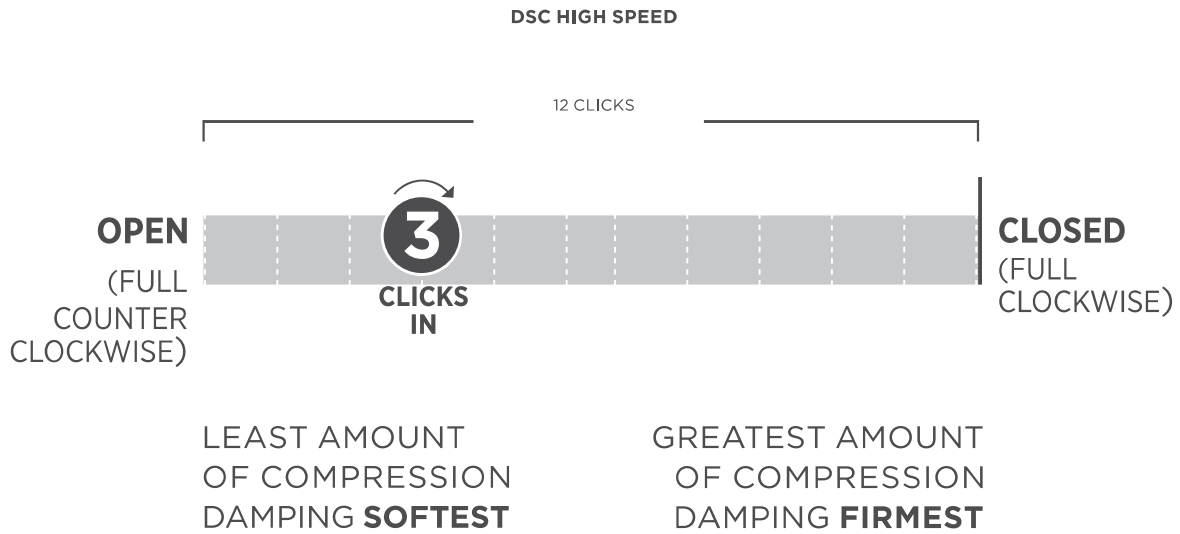


Figure 25: Passenger side shown.

21. Reinstall rear wheels and torque to OEM specifications.

22. Lower vehicle.

FOX FACTORY SETTINGS





FOX LIMITED WARRANTY

FOX Factory, Inc., a Georgia corporation having an office at 6634 Highway 53 Braselton, GA 30517 (“FOX”), makes the following LIMITED WARRANTY with respect to its suspension products:

LIMITED ONE (1) YEAR WARRANTY ON SUSPENSION PRODUCTS

Subject to the limitations, terms and conditions hereof, FOX warrants, to the original retail owner of each new FOX suspension product, that the FOX suspension product, when new, is free from defects in materials and workmanship. Unless otherwise required by law, this warranty expires one (1) year from the date of the original FOX suspension product retail purchase from an authorized FOX dealer or from a FOX authorized Original Equipment Manufacturer where FOX suspension is included as original equipment on a purchased vehicle. If law requires a warranty duration of greater than one (1) year, then, subject to the other provisions hereof, this warranty will expire at the end of the minimum warranty period required by such law.

TERMS OF WARRANTY

This warranty is conditioned on the FOX suspension product being operated under normal conditions and properly maintained as specified by FOX. This warranty is only applicable to FOX suspensions purchased new from an authorized FOX source and is made only to the original retail owner of the new FOX suspension product and is not transferable to subsequent owners. This warranty is void if the FOX suspension product is subjected to abuse, neglect, improper or unauthorized repair, improper or unauthorized service or maintenance, alteration, modification, accident or other abnormal, excessive, or improper use.

Should it be determined by FOX in its sole and final discretion, that a FOX suspension product is covered by this warranty, it will be repaired or replaced, by a comparable model, at FOX’s sole option, which will be conclusive and binding. THIS IS THE EXCLUSIVE REMEDY UNDER THIS WARRANTY. ANY AND ALL OTHER REMEDIES AND DAMAGES THAT MAY OTHERWISE BE APPLICABLE ARE EXCLUDED, INCLUDING, BUT NOT LIMITED TO, INCIDENTAL OR CONSEQUENTIAL DAMAGES OR PUNATIVE DAMAGES.

This limited warranty does not apply to normal wear and tear, malfunctions or failures that result from abuse, improper assembly, neglect, alteration, improper maintenance, crash, misuse or collision. This limited warranty gives the consumer specific legal rights. The consumer may also have other legal rights which vary from state to state or country to country. Some states and countries do not allow the exclusion or limitation of incidental or consequential damages or warranties, and if dictated by law the above limitations or exclusions may not apply to you. If it is determined by a court of competent jurisdiction that a certain provision of this limited warranty does not apply, such determination shall not affect any other provision of this limited warranty and all other provisions shall remain in full effect

THIS IS THE ONLY WARRANTY MADE BY FOX ON ITS SUSPENSION PRODUCTS AND COMPONENTS, AND THERE ARE NO WARRANTIES WHICH EXTEND BEYOND THE DESCRIPTION HEREIN. ANY WARRANTIES THAT MAY OTHERWISE BE IMPLIED BY LAW INCLUDING, BUT NOT LIMITED TO, ANY IMPLIED WARRANTY OF MERCHANTABILITY OR FITNESS FOR A PARTICULAR PURPOSE ARE EXCLUDED



SHOCKS NEED LOVE TOO

FOX SHOCKS SERVICE & UPGRADES

HAVE YOUR FOX SHOCKS SERVICED OR UPGRADED BY FOX TECHNICIANS. CALL OUR OFF-ROAD AND TRUCK SERVICE CENTER AT 619.768.1800 TO GO OVER THE SERVICE AND UPGRADE OPTIONS AVAILABLE FOR YOUR SHOCKS. ONCE YOU'VE SETUP YOUR SERVICE OR UPGRADES YOU WILL RECEIVE A RETURN AUTHORIZATION NUMBER SHIPPING INSTRUCTIONS.

COMPLETE SERVICE INTERVALS

- 100% STREET USE:
EVERY 50,000 MILES
- 50% STREET/50% OFF-ROAD USE:
EVERY 10,000 MILES

SERVICE MENUS & PRICING

VISIT RIDEFOX.COM/ORSERVICE



WARNING: Cancer and Reproductive Harm –
www.P65Warnings.ca.gov