



THE AUTOMOTIVE LIGHTING BENCHMARK

INSTALL GUIDE

2015-2017 MUSTANG XB HEADLIGHTS

LF2-410



WARNING: IT IS THE INSTALLER'S RESPONSIBILITY TO CONFIRM COMPLIANCE WITH STATE AND LOCAL LAWS. BY READING THIS DOCUMENT, YOU AGREE IT IS ONLY TO BE USED AS AN EDUCATIONAL GUIDE. MORIMOTO LIGHTING NOR ITS DEALERS MAKE GUARANTEES ON ANY FINISHED RESULTS, NOR ARE THEY TO BE HELD RESPONSIBLE FOR ANY DAMAGE, MISUSE, OR PERSONAL INJURIES. IF YOU ARE UNABLE TO CLEARLY UNDERSTAND AND ADAPT THE INFORMATION BELOW, PROFESSIONAL INSTALLATION IS RECOMMENDED.

IMPORTANT: IF YOUR VEHICLE IS EQUIPPED WITH ANYTHING BUT MORIMOTO OR OEM TAILLIGHTS, SIDE MARKERS OR OTHER OEM EXTERIOR LIGHTING; YOU MAY EXPERIENCE A HYPER FLASH AND/OR PROBLEM WITH THE SEQUENTIAL SIGNAL SETTING ON THESE HEADLIGHTS. THIS IS NOT A DEFECT IN THE HEADLIGHT AND CAUSED BY UN-MATCHED IMPEDANCE WITH YOUR ORIGINAL VEHICLE SETTINGS.



2015-2017 MUSTANG XB HEADLIGHTS

TABLE OF CONTENTS	PAGE
DISASSEMBLY -----	3
HEADLIGHT INSTALLATION -----	8
AIMING -----	11

WHAT'S INCLUDED



**2X (ONE PAIR)
HEADLIGHT
ASSEMBLIES**



**4X PAIRS OF
HEADLIGHT MODE
SELECTORS**



**2X TURN SIGNAL
ADAPTERS**

REQUIRED TOOLS

- RATCHET
- 5.5MM SOCKET
- 7MM SOCKET
- 8MM SOCKET
- 10MM SOCKET
- 13MM SOCKET
- 7MM WRENCH
- TRIM REMOVAL TOOL
- PHILLIPS SCREWDRIVER



DISASSEMBLY

1. WITH THE HOOD OF THE CAR RAISED, REMOVE THE EIGHT PUSH-CLIPS SECURING THE PLASTIC RADIATOR COVER TO THE RADIATOR SUPPORT, AND REMOVE THE COVER FROM THE VEHICLE



2. REMOVE THE SIX 8MM (YELLOW) AND TWO 5.5MM (BLUE) BOLTS SECURING THE BUMPER COVER TO THE VEHICLE



DISASSEMBLY

3. UNDER THE FRONT OF THE CAR, REMOVE THE TWELVE (SIX PER SIDE) 7MM BOLTS THAT SECURE THE BOTTOM OF THE BUMPER COVER TO THE CAR

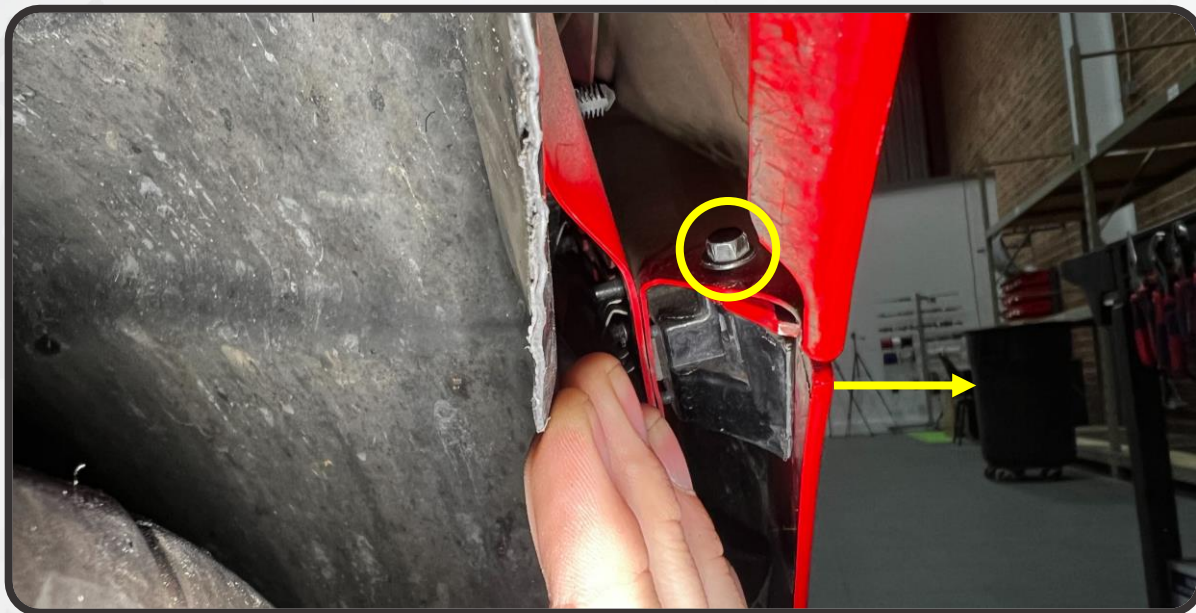


4. MOVING TO THE SIDE OF THE CAR IN FRONT OF THE FRONT WHEELS, REMOVE THE THREE PLASTIC PUSH CLIPS HOLDING THE FENDER LINER TO THE BUMPER COVER

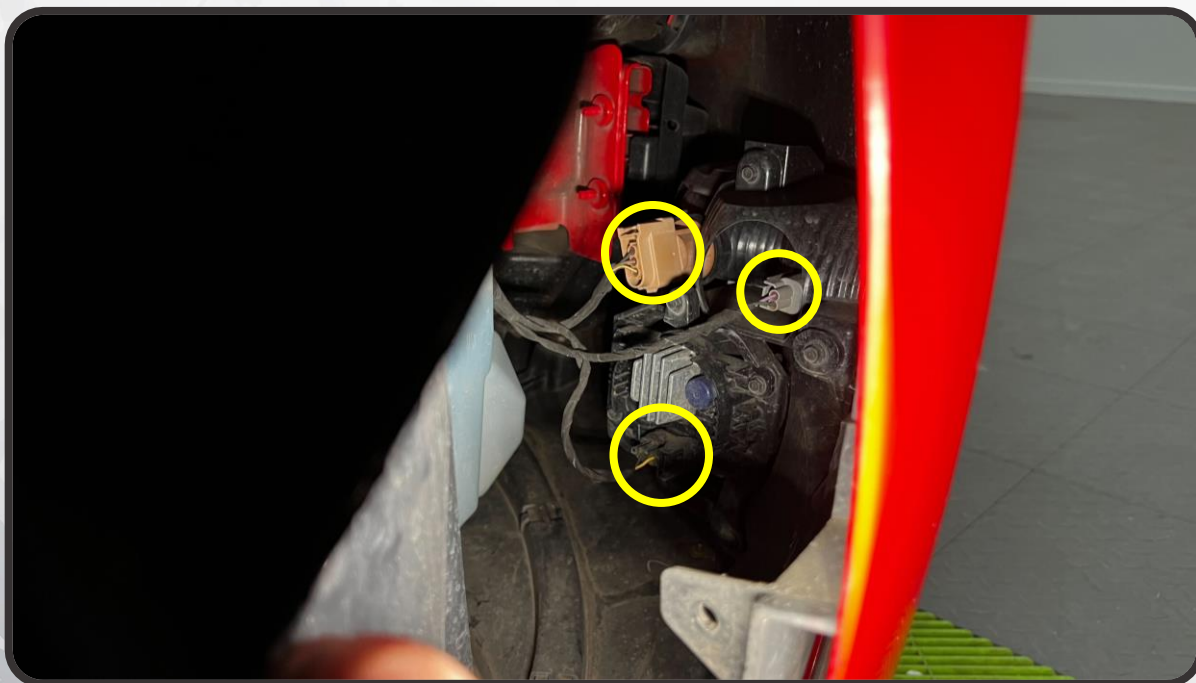


DISASSEMBLY

5. PULL BACK THE FENDER LINER AND USE A 7MM WRENCH TO REMOVE THE BOLT SECURING THE CORNER OF THE BUMPER COVER TO THE FENDER. WITH THIS BOLT REMOVED, PULL THE SIDE OF THE BUMPER COVER OUT AWAY FROM THE VEHICLE

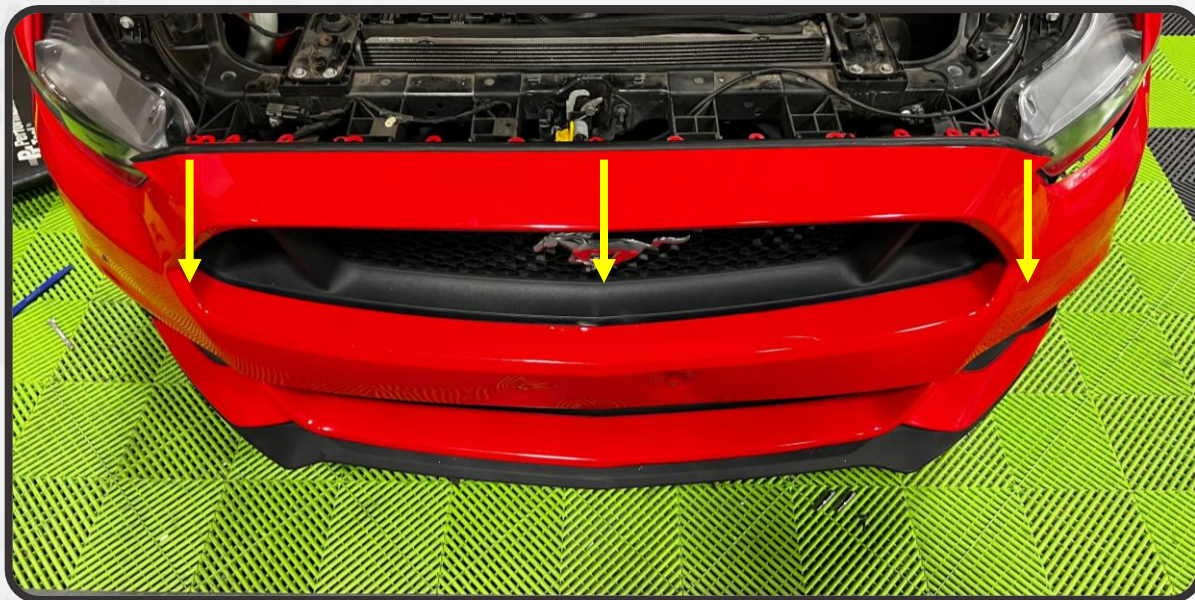


6. WITH THE FENDER LINER STILL PULLED BACK, REACH IN BEHIND THE BUMPER COVER AND DISCONNECT THE PLUGS FOR THE TURN SIGNAL, PARKING LIGHT, AND FOG LAMP



DISASSEMBLY

7. REPEAT STEPS 4-6 ON THE OPPOSITE SIDE OF THE VEHICLE
8. LIFT UP ON THE UPPER EDGE OF THE BUMPER COVER, AND PULL IT FORWARD OFF OF THE VEHICLE AND SET IT ASIDE

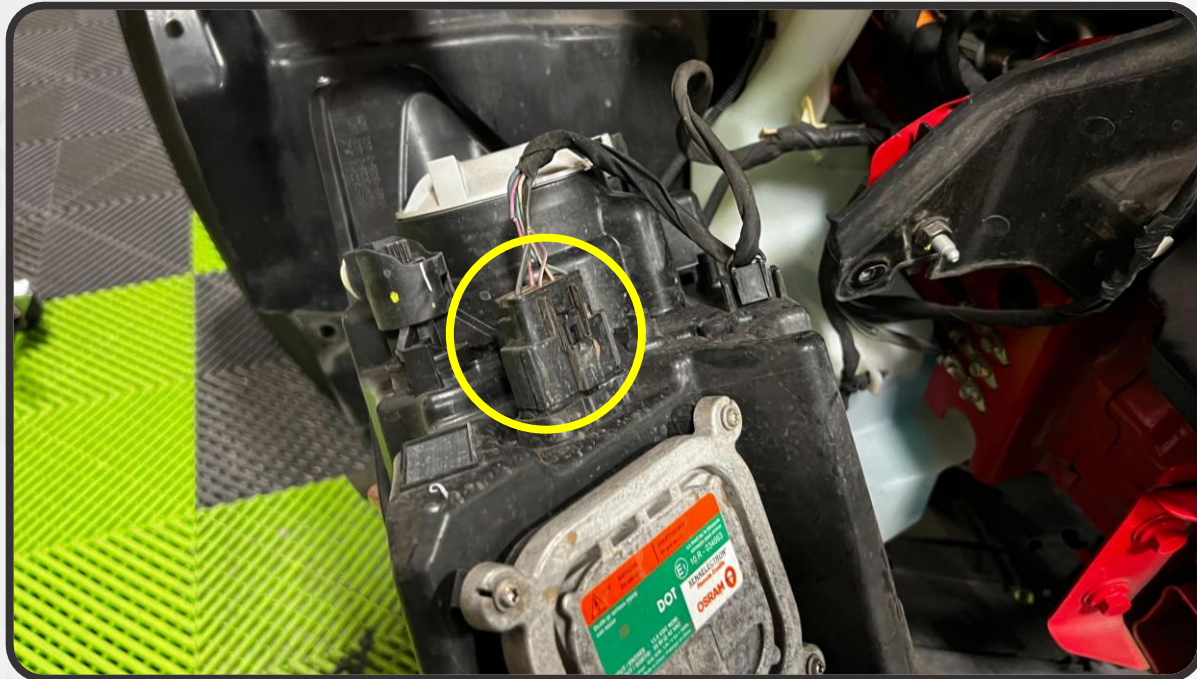


9. WITH THE BUMPER COVER REMOVED, REMOVE THE TWO 10MM BOLTS (YELLOW) AND ONE 13MM BOLT (BLUE) FROM THE HEADLIGHT



DISASSEMBLY

10. WITH THE BOLTS REMOVED, PULL THE HEADLIGHT FORWARD, OFF OF THE VEHICLE, AND DISCONNECT THE HEADLIGHT CONNECTOR



HEADLIGHT INSTALLATION

11. INSTALL THE INCLUDED TURN SIGNAL ADAPTER HARNESS AS SHOWN BELOW. IT WILL CONNECT TO THE FACTORY HEADLIGHT CONNECTOR AND FACTORY TURN SIGNAL CONNECTOR



12. WITH THE MORIMOTO XB MODE SELECTOR KEYS, YOU CAN DECIDE WHAT STYLE YOU'D LIKE FOR YOU DAYTIME RUNNING LIGHT AND TURN SIGNAL. CHOOSE FROM THE COLORCODED KEYS SHOWN BELOW FOR YOUR DESIRED STYLE

			
<ul style="list-style-type: none"> • DRL: WHITE • TURN SIGNAL: FADE-OFF 	<ul style="list-style-type: none"> • DRL: WHITE • TURN SIGNAL: SEQUENTIAL 	<ul style="list-style-type: none"> • DRL: AMBER • TURN SIGNAL: FADE-OFF 	<ul style="list-style-type: none"> • DRL: AMBER • TURN SIGNAL: SEQUENTIAL



HEADLIGHT INSTALLATION

13. INSTALL THE MODE SELECTOR FOR YOUR PREFERRED MODE ONTO THE 3-PIN CONNECTOR ON THE BACK OF EACH HEADLIGHT. THIS CAN ALWAYS BE CHANGED AFTER INSTALL IF DESIRED. MAKE SURE THE VEHICLE AND HEADLIGHTS ARE OFF WHEN CHANGING MODE SELECTORS



14. CONNECT THE HEADLIGHT PLUG ON THE TURN SIGNAL ADAPTER HARNESS TO THE NEW HEADLIGHT ASSEMBLY



HEADLIGHT INSTALLATION

15. REUSING THE FACTORY HARDWARE, MOUNT THE NEW HEADLIGHT ASSEMBLY ONTO THE VEHICLE

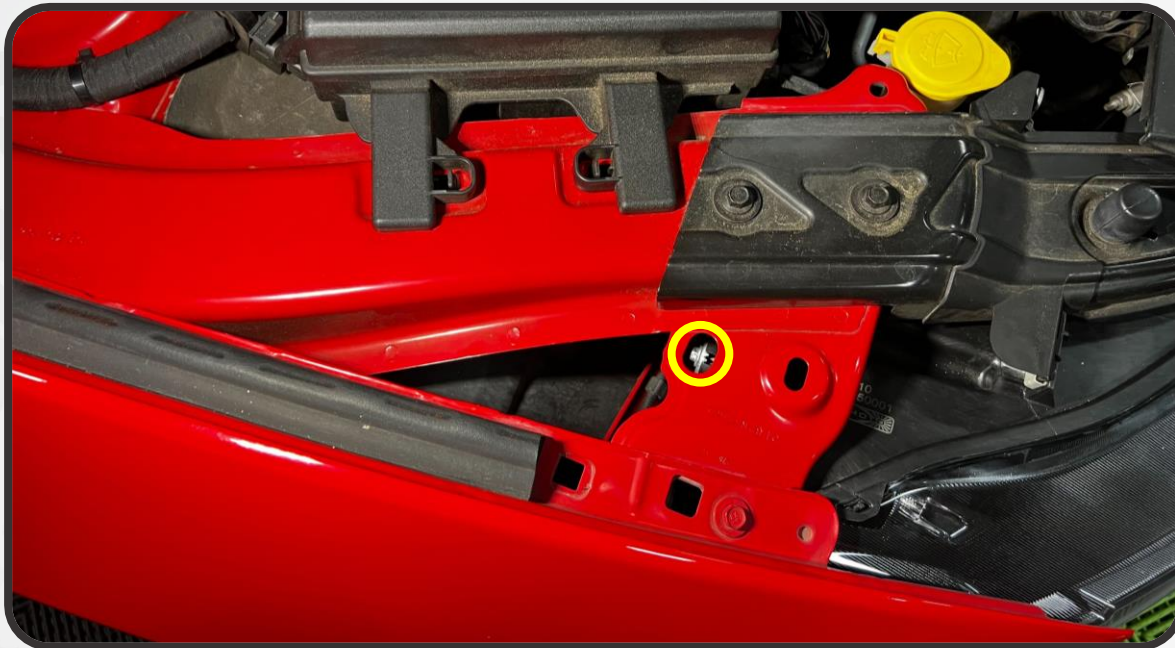


16. REPEAT STEPS 9–15 ON THE OPPOSITE SIDE OF THE VEHICLE
17. REASSEMBLE THE FRONT END OF THE VEHICLE IN THE REVERSE ORDER OF DISASSEMBLY



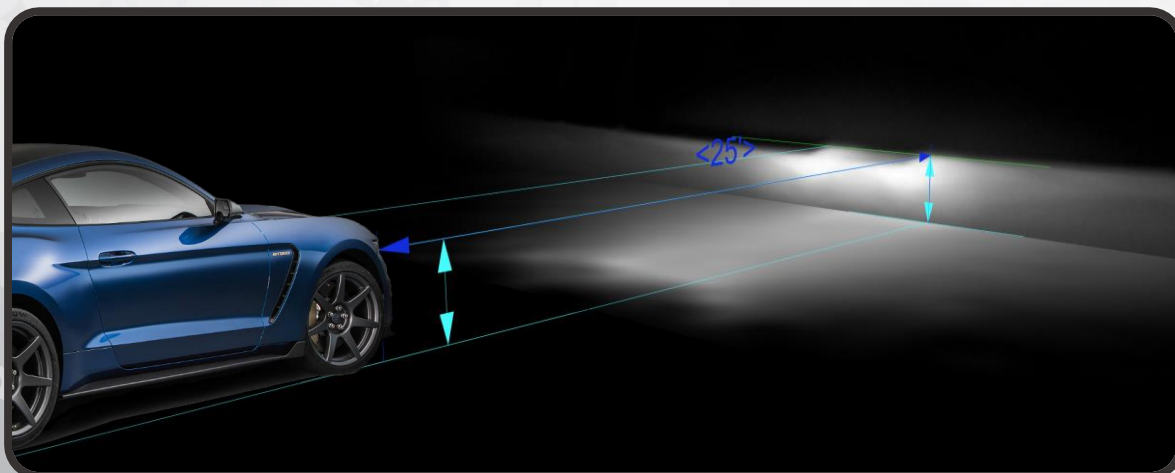
AIMING

18. USING A LONG PHILLIPS HEAD SCREWDRIVER DOWN THE BACK OF THE HEADLIGHT TO THE ADJUSTER GEAR, FOLLOW THE INSTRUCTIONS BELOW TO PROPERLY ALIGN YOUR HEADLIGHTS' LOW BEAM CUTOFF (THE UPPER HORIZONTAL EDGE OF THE LOW BEAM)



19. WITH THE VEHICLE PARKED ON LEVEL GROUND, 25' FROM A WALL, MEASURE THE DISTANCE FROM THE GROUND TO THE OPTICAL CENTER OF THE OUTERMOST PROJECTOR IN THE HEADLIGHT

- IF THE DISTANCE FROM THE GROUND TO THE OPTICAL CENTER IS LESS THAN 34.5", ADJUST THE TOP OF THE HEADLIGHT CUTOFF TO THE SAME HEIGHT AS THE HEADLIGHT MEASUREMENT YOU TOOK
- IF THE HEIGHT IS BETWEEN 35"-39", ADJUST THE CUTOFF TO 2" BELOW YOUR HEADLIGHT MEASUREMENT
- IF THE HEIGHT IS GREATER THAN 39.5", ADJUST THE CUTOFF TO 3" BELOW YOUR HEADLIGHT MEASUREMENT



2015-2017 MUSTANG XB HEADLIGHTS



- ENJOY YOUR NEW MORIMOTO XB HEADLIGHTS! -

