

2008-14 SUBARU IMPREZA XB LED HEADLIGHTS INSTALL GUIDE

WARNING: By reading this document, you agree it is only to be used as an educational guide. Morimoto Lighting nor its dealers make guarantees on any finished results, nor are they to be held responsible for any damage, misuse, or personal injuries. If you are unable to clearly understand and adapt the information below, professional installation is recommended.

PACKAGE CONTENTS

2X HEADLIGHT ASSEMBLIES



1 X DRL HARNESS

IMPORTANT: If your vehicle is equipped with anything but OEM turn signals (full assemblies, LED bulbs, or otherwise) in the tail lights or elsewhere: You may experience a hyper flash and/or problem with the sequential signal setting on these headlights. This is not a defect in the headlight, and caused by un-matched impedance with your original vehicle settings.

2008-2014 SUBARU IMPREZA



TABLE OF CONTENTS

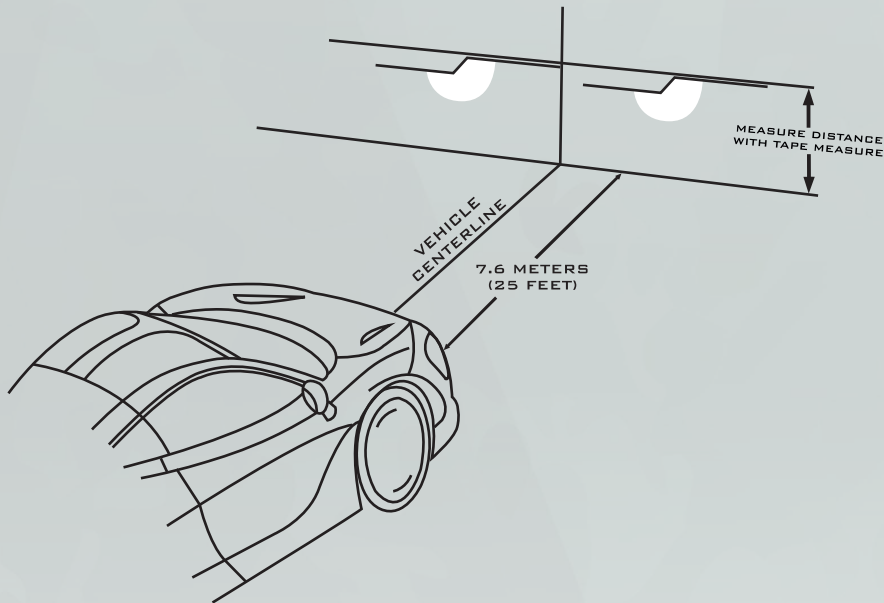
- HEADLIGHT BEAM AIMING PAGE 3
- INSTALLATION PROCESS PAGE 4

REQUIRED TOOLS

- RATCHET
- 10MM SOCKET
- FLAT HEAD SCREWDRIVER OR PANEL PRY TOOL
- PHILIPS HEAD SCREWDRIVER
- ELECTRICAL TAPE

VERTICAL HEADLIGHT AIMING PROCEDURE

- First park your car on a level surface 25 feet from a wall.
- Then with a tape measure, measure the distance between the ground and your headlight beam (picture below).
- Write down this measurement.
- Once you install your Morimoto headlights, park the same way as you did with your previous headlights
- Aim your Morimoto headlights to shine as high as your previous headlight (measurement you took above).
- The general rule is to then drive the car around and look at surrounding vehicles to make sure your headlight beam isn't directly in their eyes, if it is then lower your headlights.



- To adjust the low beam, slide a philips head screwdriver into this slot and turn the screwdriver clockwise to move the beam up and turn counter clockwise to move the beam down.



INSTALLATION PROCESS

1. Remove four (4) plastic clips on each side of the bumper (IMAGE 1). To remove the top clip, simply press the center in and pull the clip out. Remove two (2) plastic clips on the bottom sides of the bumper (IMAGE 2).



IMAGE 1



IMAGE 2

2. Remove five (5) 10mm bolts under the bottom center of the bumper (IMAGE 3). Remove the four (4) plastic clips on the top of the bumper (IMAGE 4).



IMAGE 3



IMAGE 4

3. Pull the bumper away from each of the fenders to release the sides, then pull the whole bumper forward away from the car (IMAGE 5). Unplug both fog lights and set the bumper off to the side (IMAGE 6).



IMAGE 5

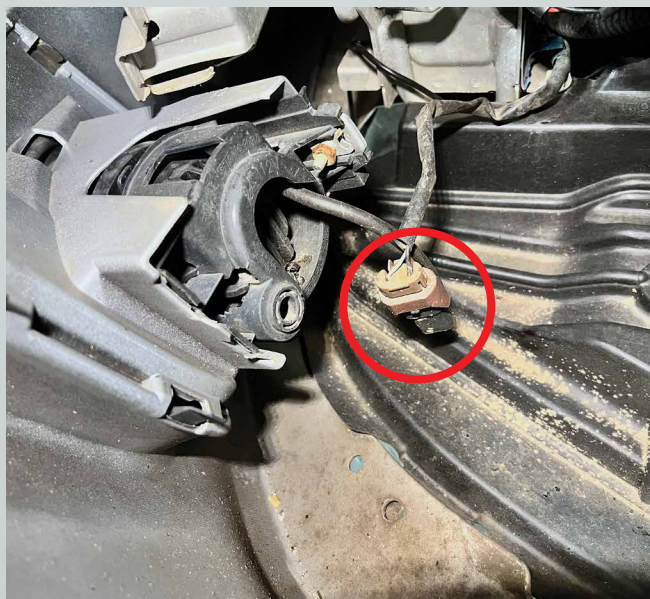


IMAGE 6

4. Remove the two (2) 10mm bolts holding the side of the headlight (IMAGE 7). Remove the two (2) 10mm bolts holding the inner part of the headlight (IMAGE 8).



IMAGE 7

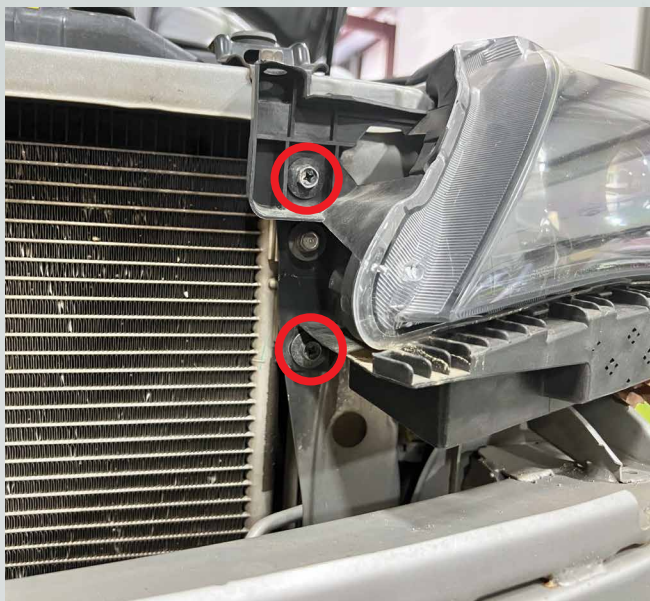


IMAGE 8

5. Remove the one (1) 10mm bolt holding the top of the headlight, also remove the plastic clip. Pull the headlight forward to remove it off of the vehicle.



6. Disconnect the headlight via the multi pin connector. To do so press the release tab (#1), then separate the connectors (#2).

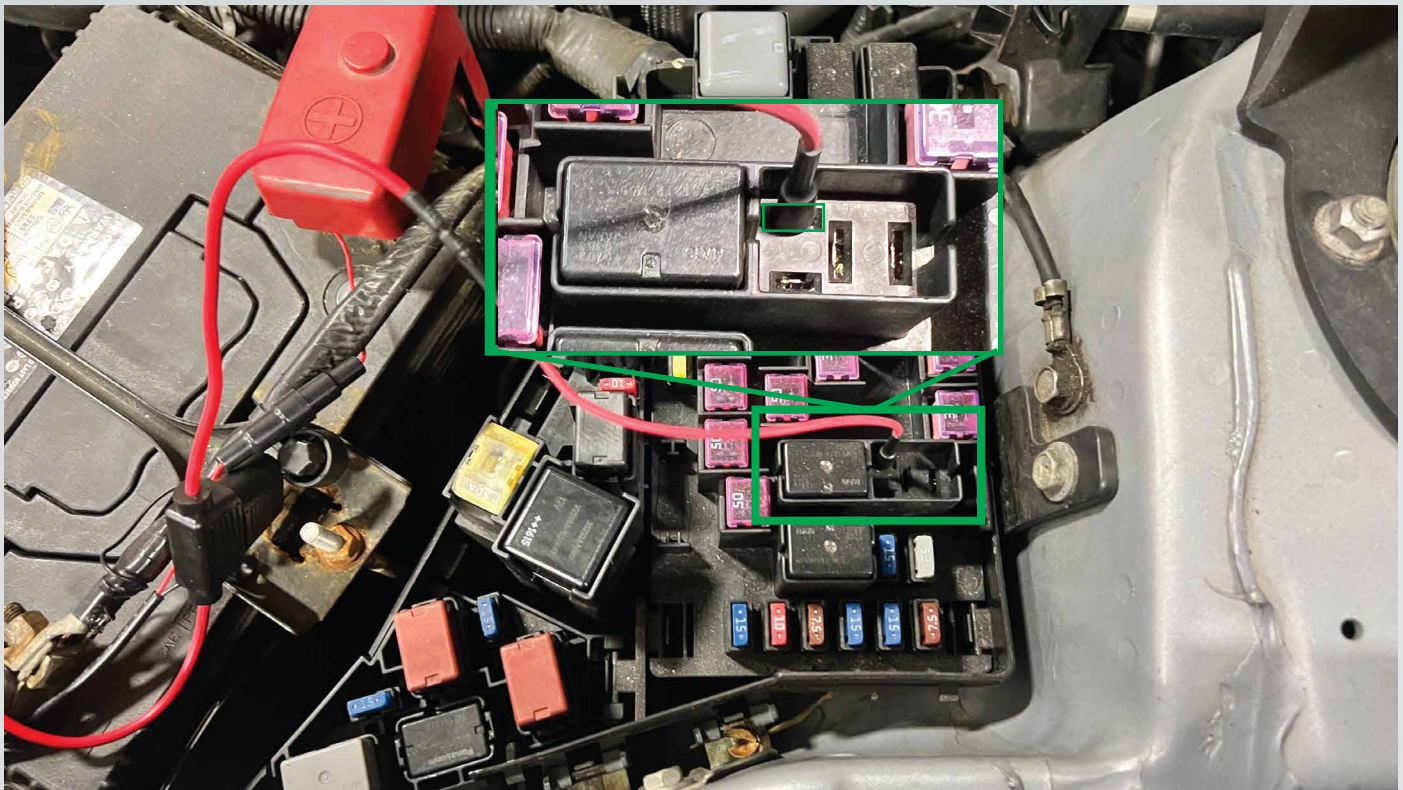


7. Repeat steps #4-6 on the other headlight.

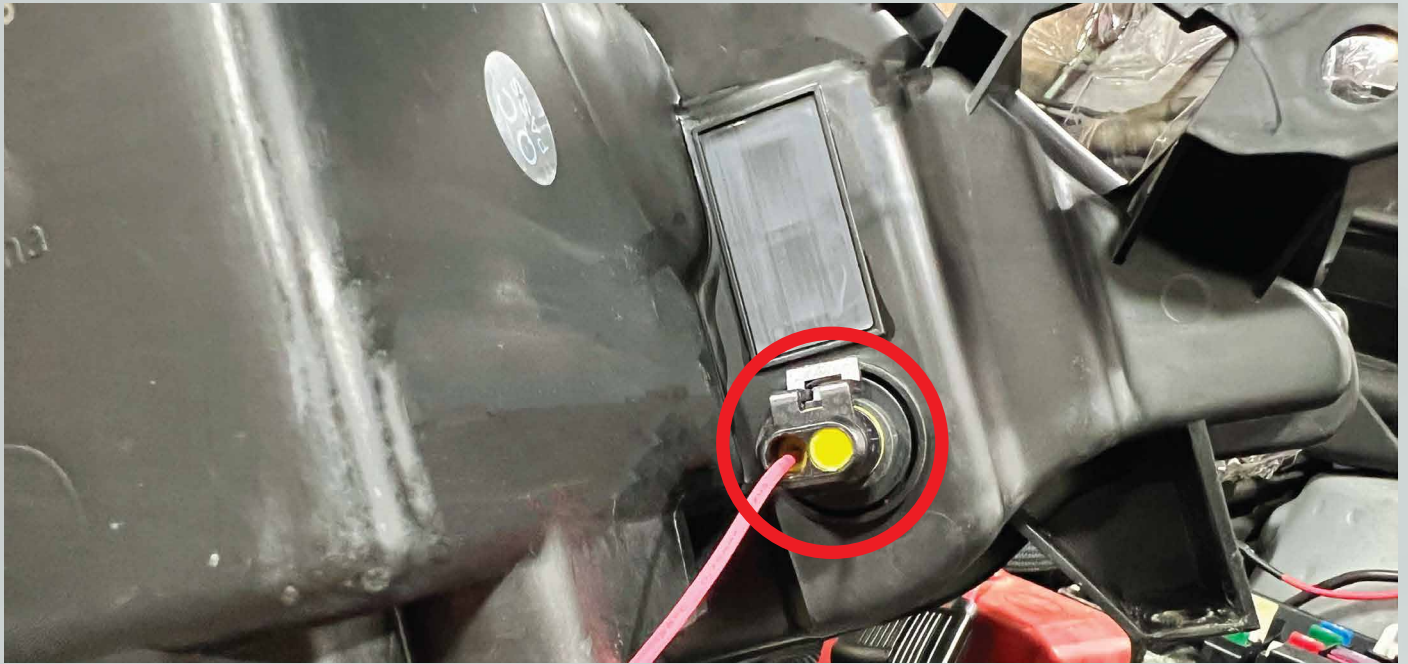
8. Remove the three (3) 10mm bolts holding the bottom bracket to the headlight. Swap over the bracket to your Morimoto headlights.



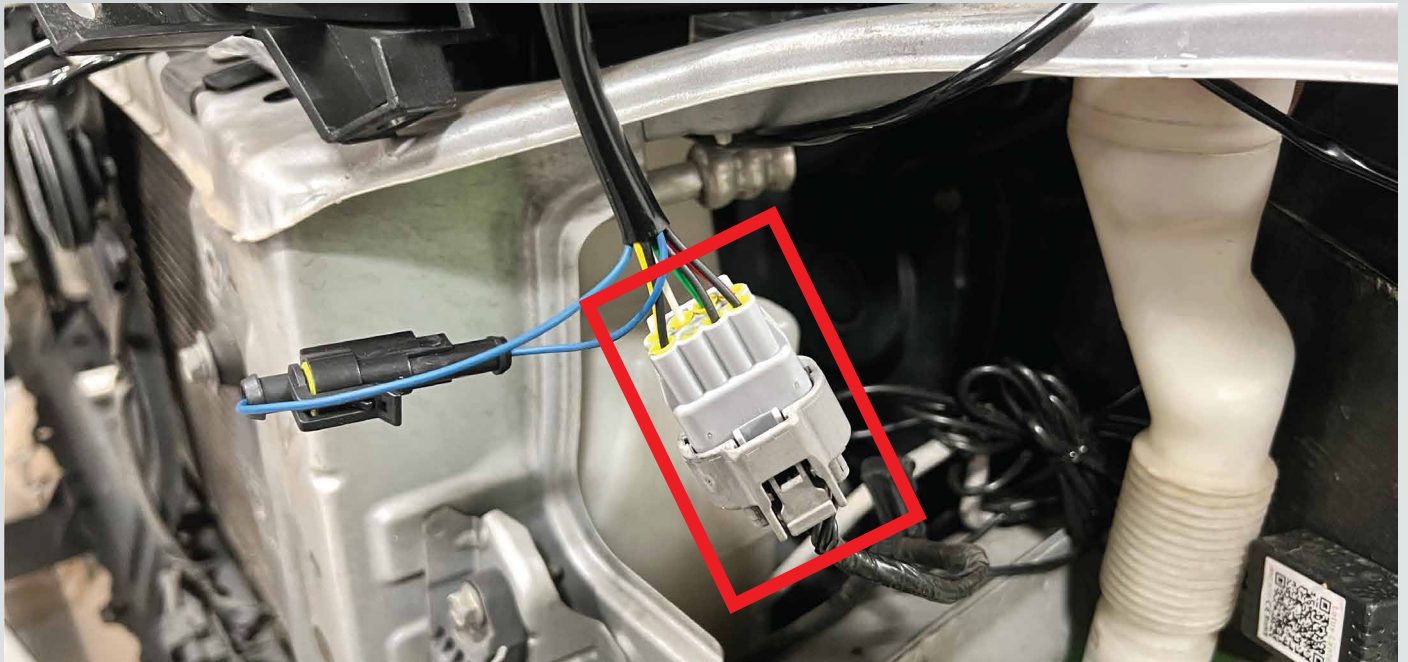
9. Locate the included DRL harness and plug in the spade pin into the position indicated below in the under hood fuse box. Run the shorter end of DRL harness to the driver side headlight and the longer end to the passenger side headlight.



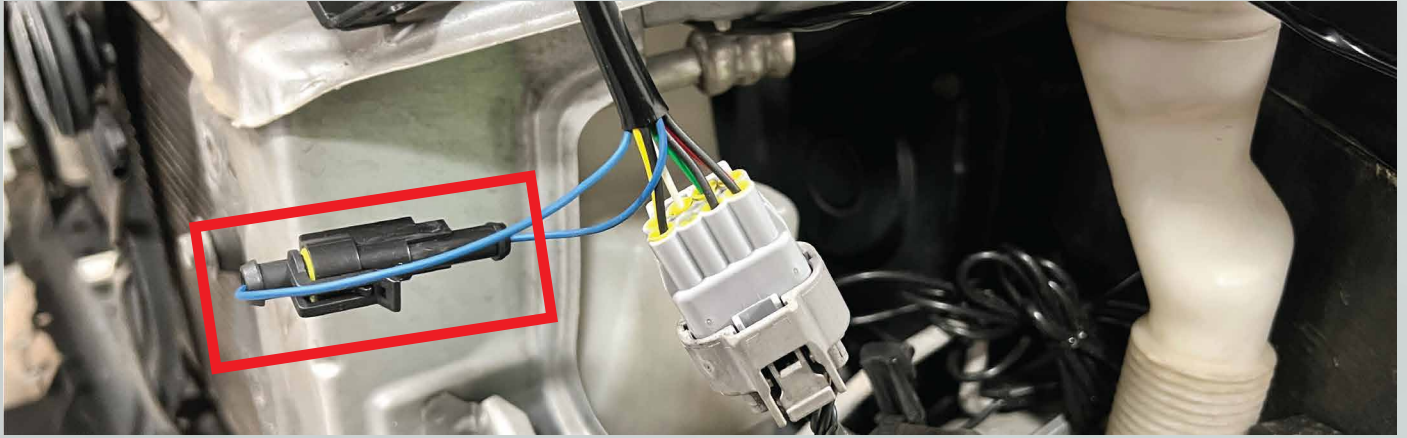
10. Take one of your Morimoto headlights over to the car and plug in the DRL harness connector into the headlight.



11. Plug in the multi pin vehicle connector into the multi pin connector coming off of the Morimoto headlight.



12. Choose if you want the LEDs to do start up sequence with this connector. With the connector plugged in the start up sequence will be active. Leave the connectors unplugged if you do not want the start up sequence.



13. Place the headlight in it's place on the vehicle and thread the top bolt in to hold the headlight on the car.

14. Repeat steps #10 - 13 on the other side of the vehicle.

15. Disable the factory DRL by unplugging this connector. Wrap the connector with some electrical tape to prevent any water getting inside.



16. Turn the vehicle ON and go through all of the functions to make sure everything works properly.

17. Reinstall all of the headlight bolts and tighten them. Reassemble the rest of the vehicle.

PROCEED TO PAGE 3 FOR HEADLIGHT AIMING INSTRUCTIONS