

2018-22 JEEP JL / JT TURN SIGNAL & SIDE MARKER INSTALL GUIDE

WARNING: By reading this document, you agree it is only to be used as an educational guide. Morimoto Lighting nor its dealers make guarantees on any finished results, nor are they to be held responsible for any damage, misuse, or personal injuries. If you are unable to clearly understand and adapt the information below, professional installation is recommended.



PACKAGE CONTENTS



2X ASSEMBLIES



2X STAINLESS STEEL
CABLE TIES



2X HEAT SHRINK
TUBING



2X RESISTERS

IMPORTANT: If your vehicle is equipped with anything but OEM turn signals (full assemblies, LED bulbs, or otherwise) in the tail lights or elsewhere: You may experience a hyper flash and/or problem with the sequential signal setting on these headlights. This is not a defect in the headlight, and caused by un-matched impedance with your original vehicle settings.

REQUIRED TOOLS

- RATCHET
- 10MM SOCKET
- T30 TORX BIT
- 7MM WRENCH
- FLAT HEAD SCREWDRIVER OR TRIM REMOVAL TOOL
- #2 PHILIPS HEAD SCREWDRIVER
- SCISSORS
- HEAT GUN

INSTALLATION PROCESS

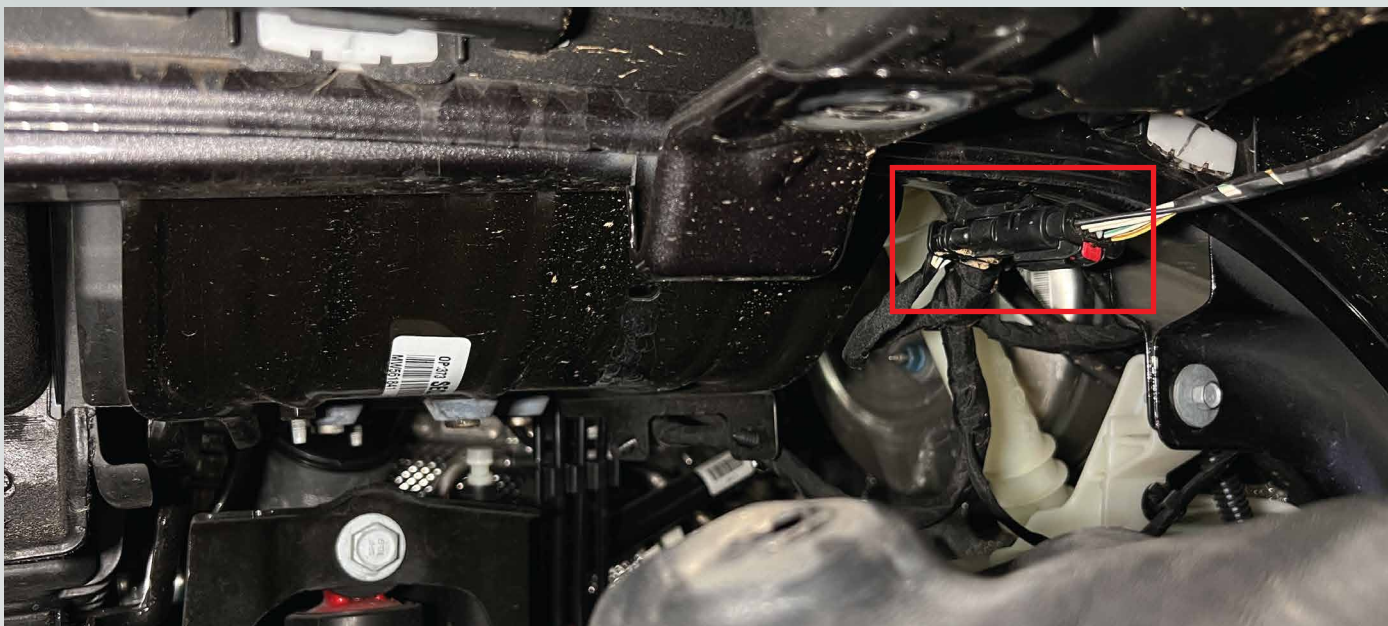
1. Starting under the driver side fender, remove these (3) three push clips, and (4) four 10mm bolts.



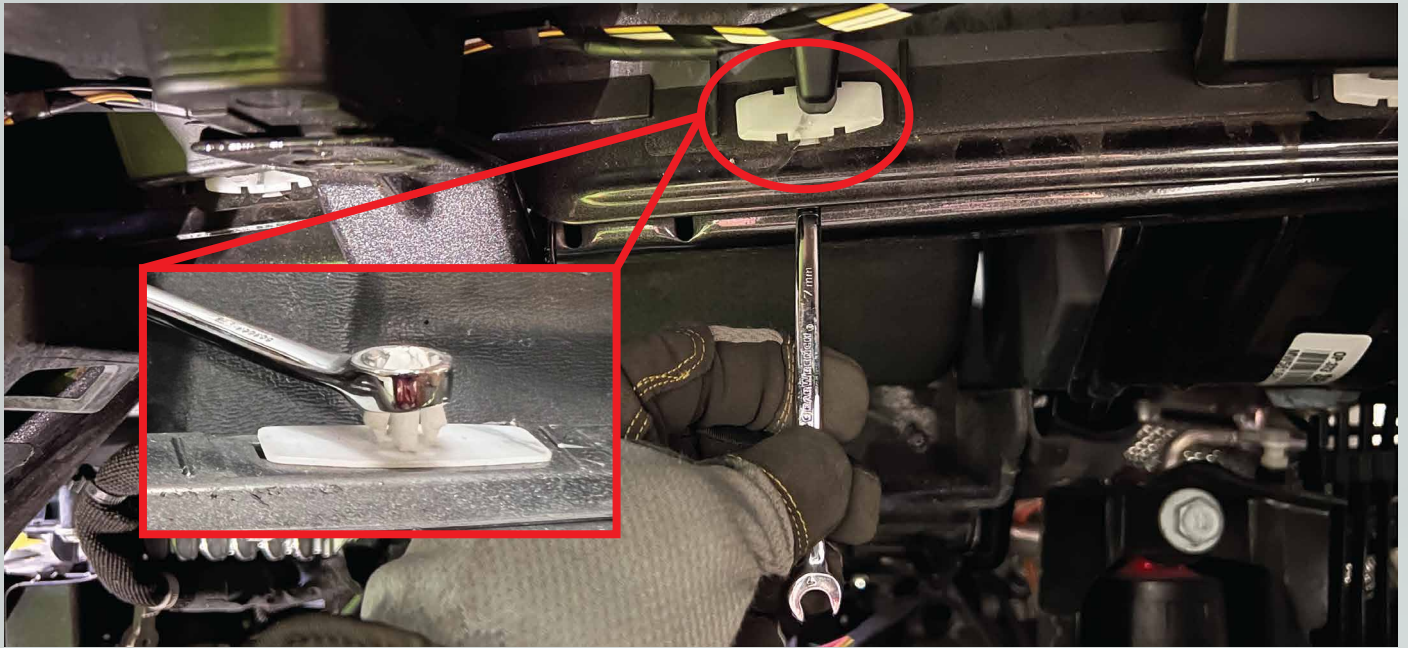
2. Towards the back of the fender, remove this (1) one 10mm bolt, and (2) two push clips.



3. Pull the fender liner down and locate this connector toward the middle of the fender. Unplug it by sliding the red tab back, then press the release tab down, and slide the connector apart.



4. Locate these (11) eleven plastic clips holding the plastic fender to the metal fender (below is a picture showing all of the clips). To release the clips, get a 7mm wrench and slide it over the head and the clip shall release. Once you release each clip, keep the plastic fender pulled away from the metal fender so that the clips don't lock back into place.



5. Once all of the clips are released, remove the plastic fender from the vehicle and set down on a soft surface.



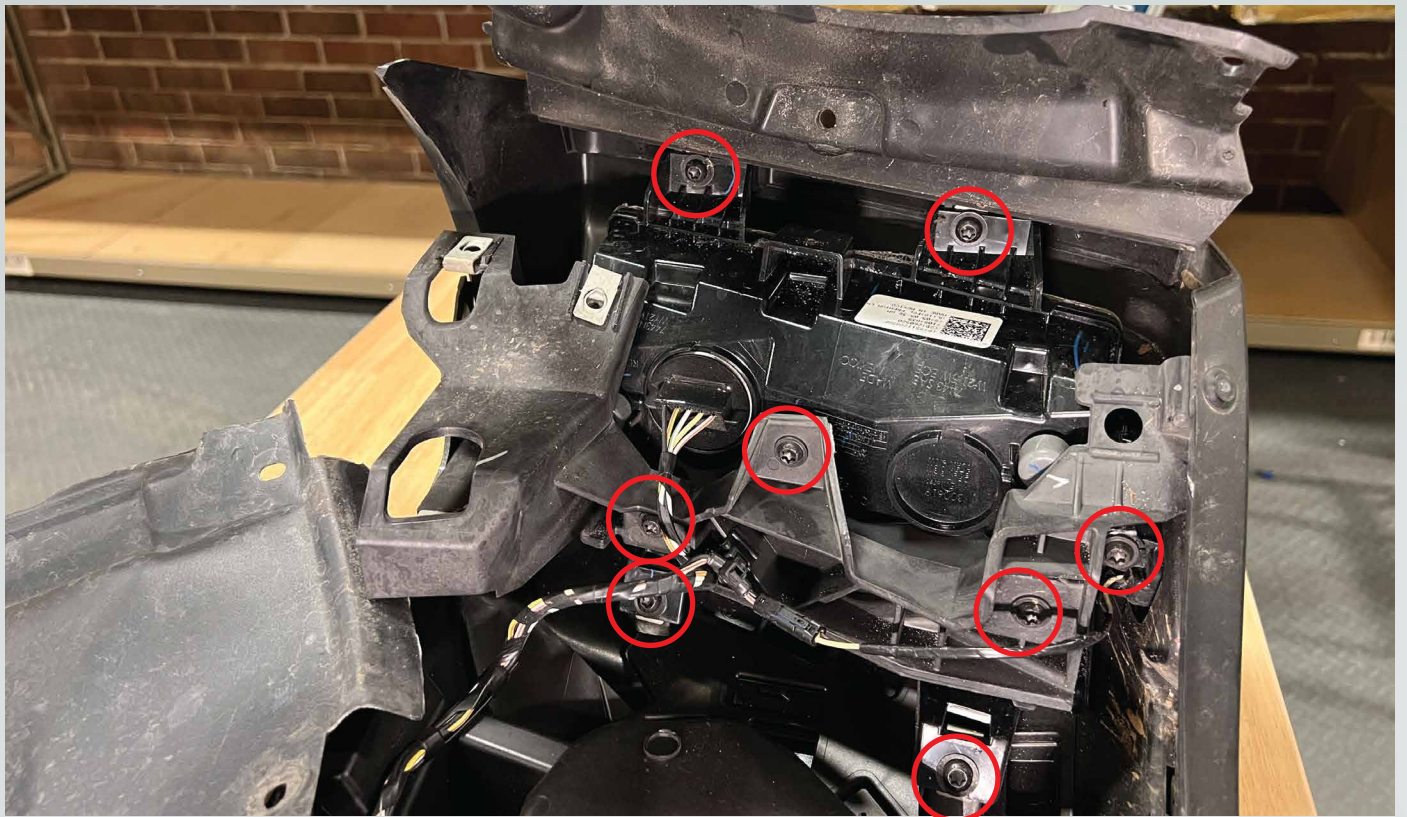
- If you broke any of the fender clips here is the part number for replacement clips.



6. Remove this philips head clip from the flap under the turn signal. Do this by unscrewing the head and prying the clip up and out.



7. Flip the flap up and remove these (8) eight T30 Torx bolts. Take note that these bolts aren't all the same, so be cautious as to which bolt goes where.



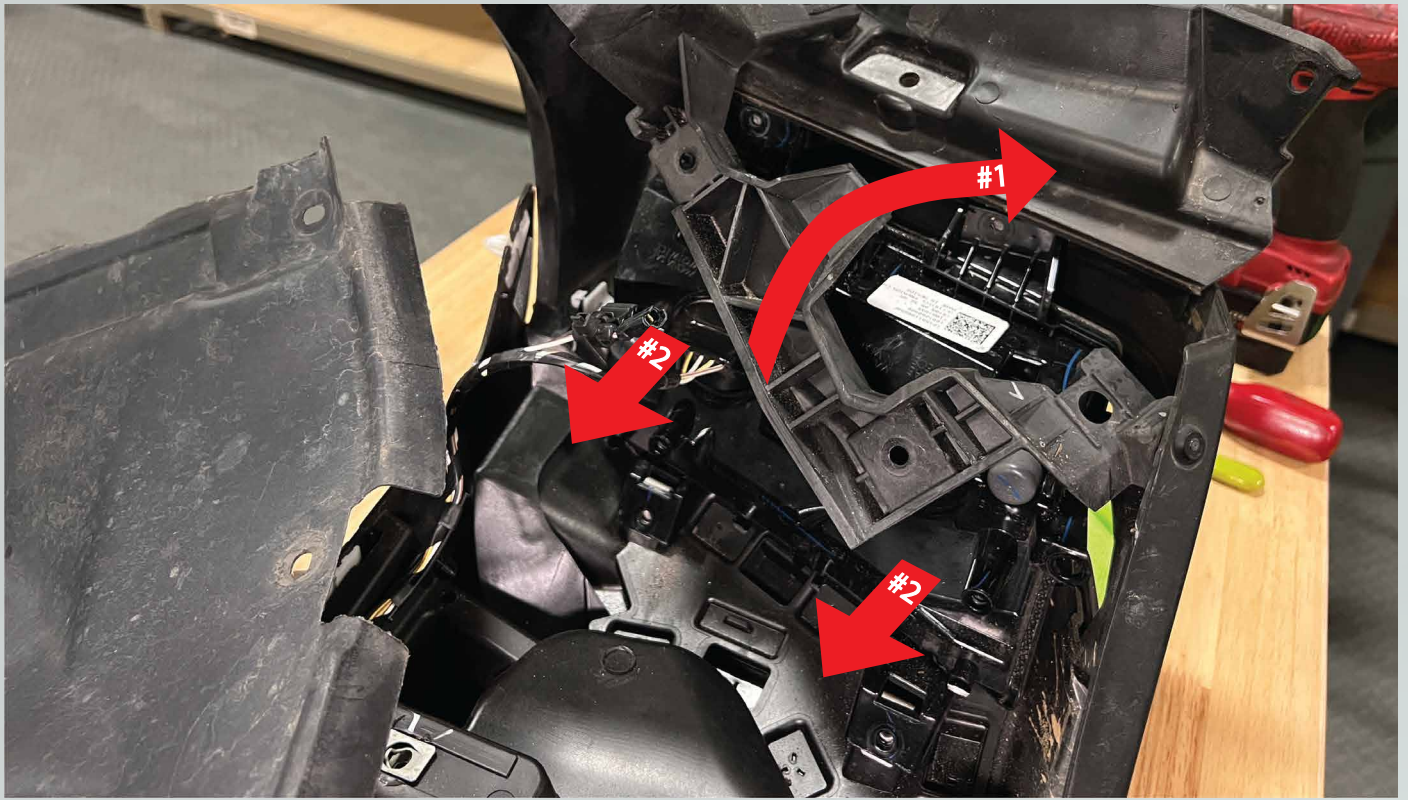
8. With a pry tool, pry up the wiring connected to the fender. Also unplug the side marker, do this by prying the locking tab up and separating the connectors.



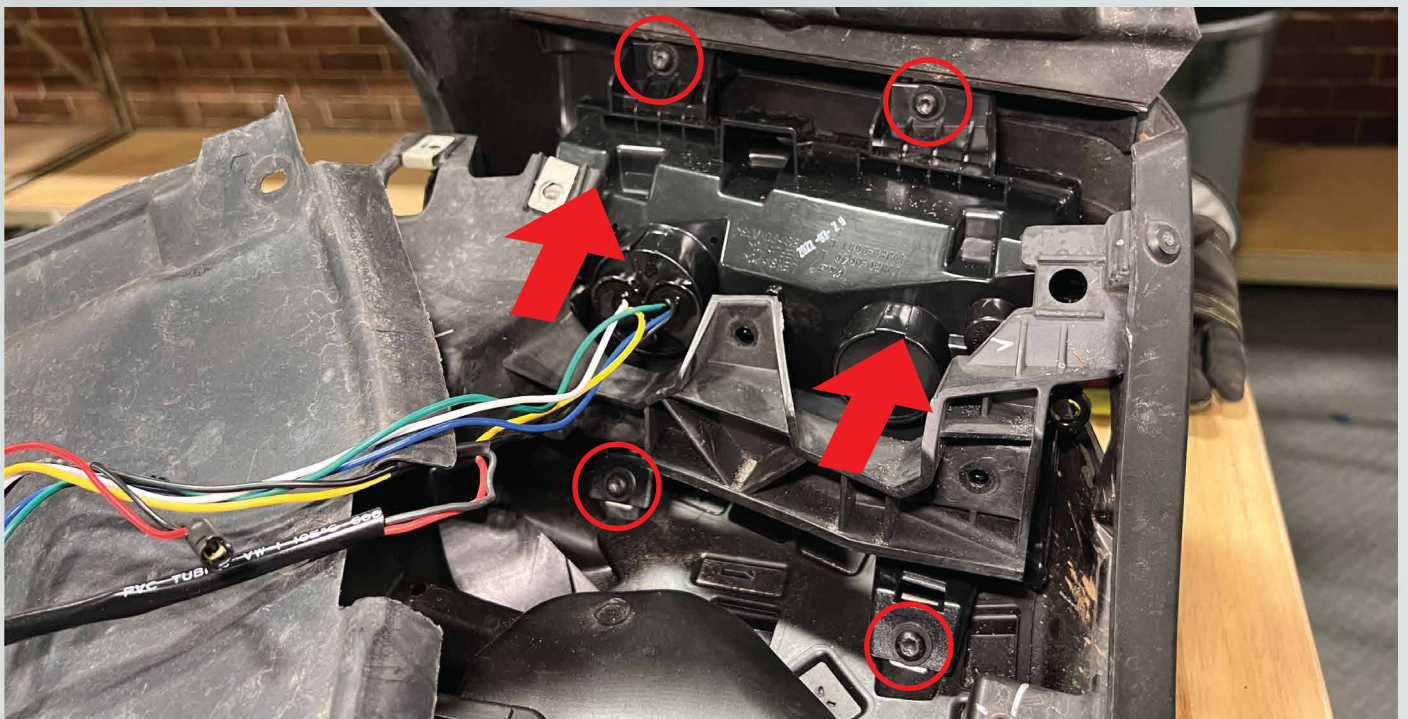
9. Slide the side marker out .



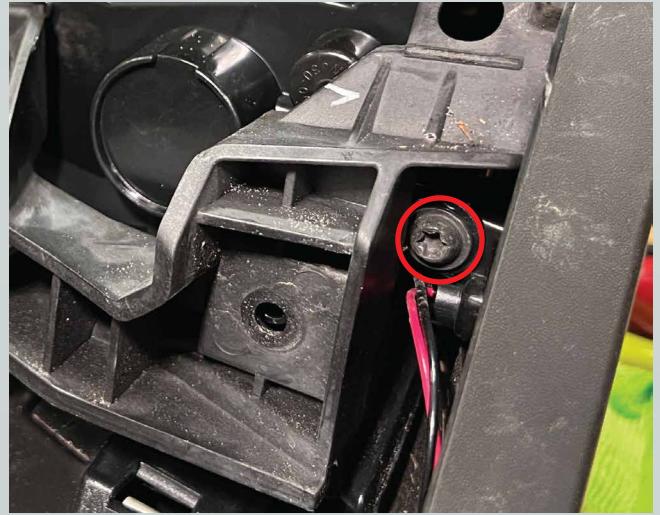
10. Rotate this bracket up and away from the turn signal housing, then slide the turn signal housing back away from the fender. This will take some force as the top of the turn signal is double side taped to the fender.



11. Get your new Morimoto turn signal housing and slide it into place. Thread these (4) four bolts in loosely to keep the housing in place.



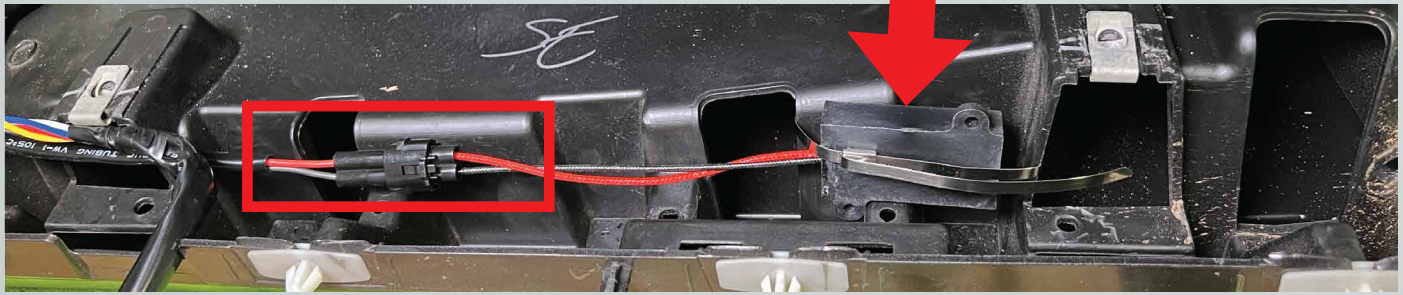
12. Slide in the side marker from the front til it's in place. From the back, thread in the bolt that holds the side marker and hand tighten it.



13. Thread in the other (3) three bolts and hand tighten them. Also hand tighten the (4) bolts from step #11.



14. Plug in the resistor into the turn signal wiring harness. Mount the resistor to the fender structure with one of the included metal straps.



(ACTUAL RESISTOR STYLE MAY VARY)

15. Run the wiring along the fender structure and secure it with zip ties.

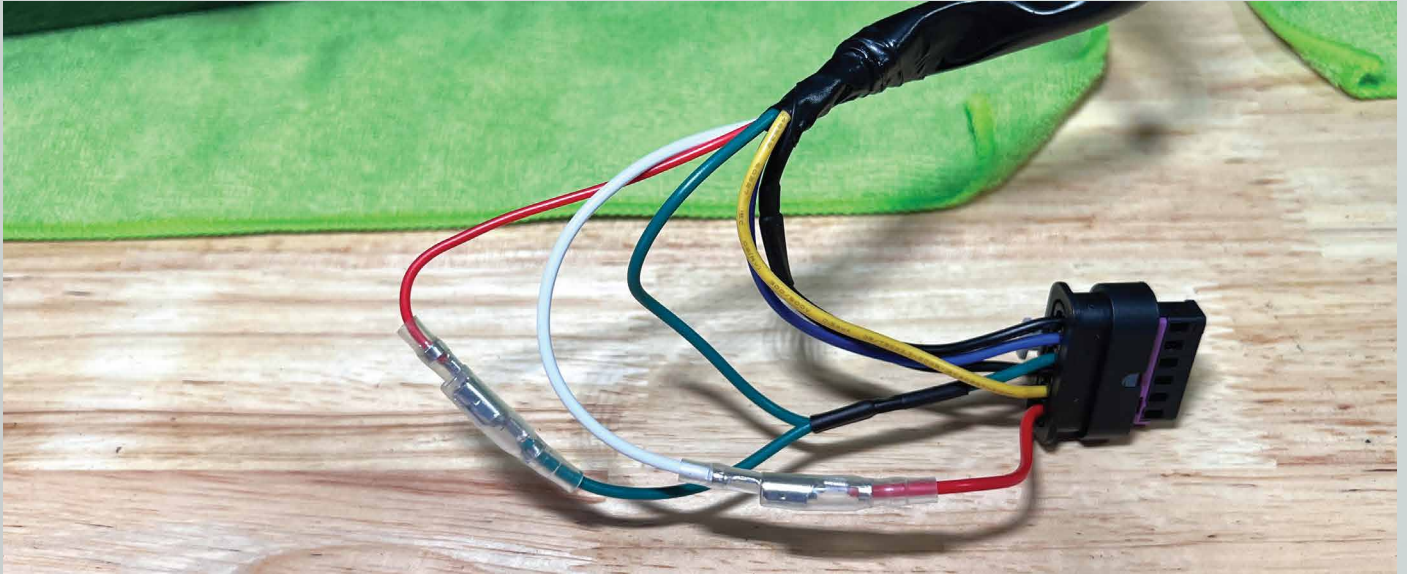


16. Locate the included heat shrink, cut off a 3.5" section and slide it over the excess wiring located behind the turn signal housing. Next plug in the side marker connector. Then shrink the heat shrink down with a heat gun.

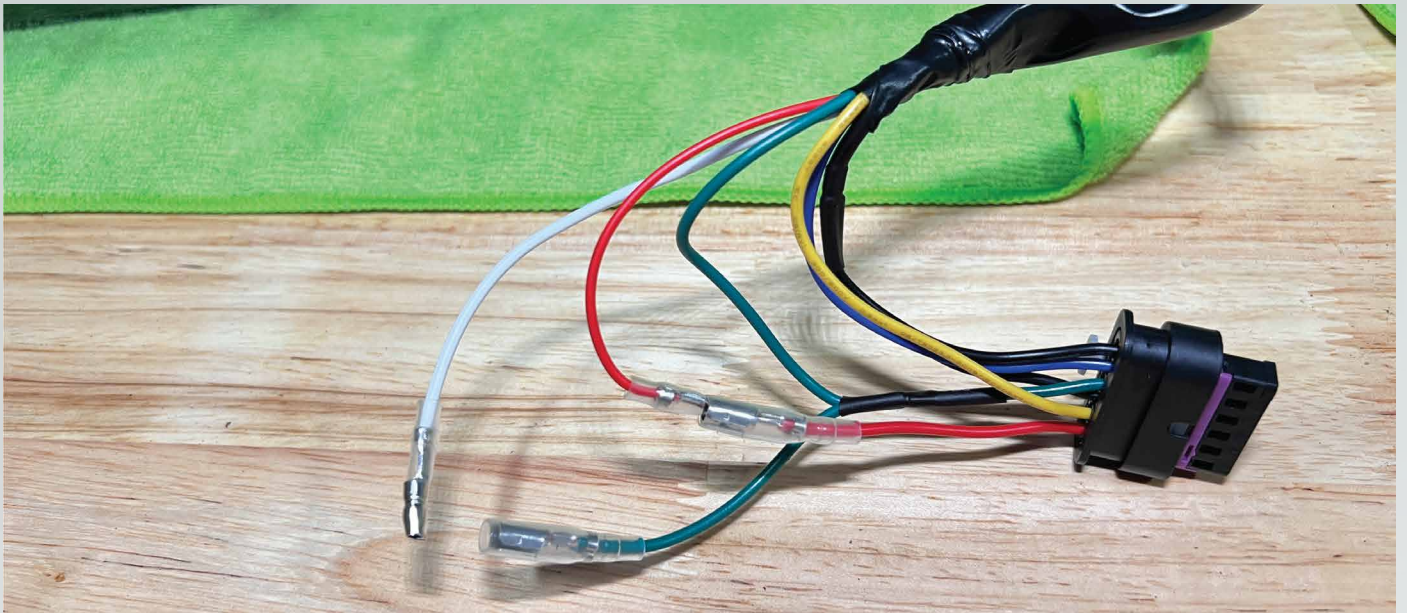


17. Before putting the fender back onto the vehicle, make sure your wiring configuration is correct.

- If your Jeep was equipped with OEM LED turn signals follow this configuration



- If your Jeep was equipped with OEM Incandecent turn signals follow this configuration. Also tape off the ends of the white and green wires.



18. Reinstall the fender onto the vehicle and plug in the connector to the factory wiring.

19. Repeat steps #1-18 on the other side of the vehicle.

20. Turn on vehicle and make sure all functions work.

21. Reassemble both sides of the vehicle.

— ENJOY YOUR NEW MORIMOTO LIGHTS! —