

CFMOTO Uforce 1000XL 2" Lift Kit

Thank you for choosing Rough Country for all your vehicle needs.

Please read instructions before beginning installation. Check the kit hardware against the kit contents shown below. Be sure you have all needed parts and know where they go.

If question exist, please call us @1-800-222-7023. We will be happy to answer any questions concerning this product. Check all fasteners for proper torque. Check to ensure for adequate clearance between all components.

Periodically check all hardware for tightness.

KIT CONTENTS:

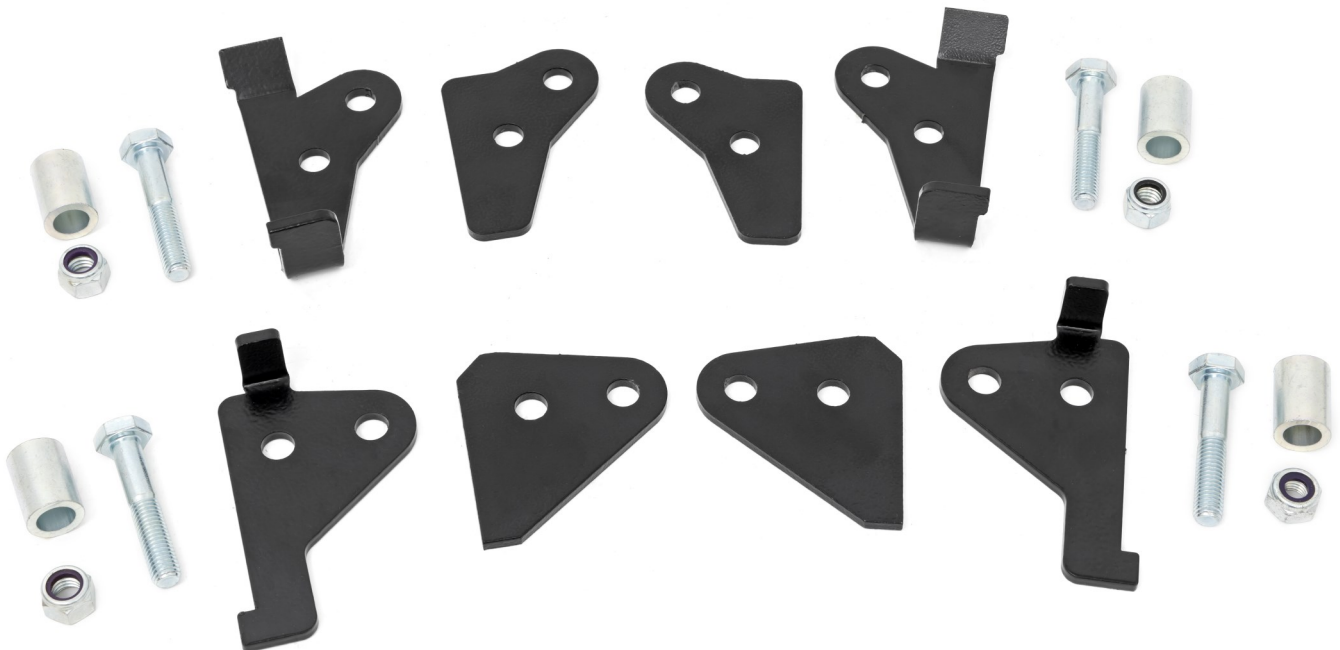
- 2 - Front Flat Plate
- 1 - Front Dr. Plate
- 1 - Front Pass. Plate
- 2 - Rear Flat Plate
- 1 - Rear Dr. Plate
- 1 - Rear Pass. Plate

96108BAG1

- 4 - Sleeve
- 4 - 10mm Nylock Nut
- 4 - 10mm x 55mm Bolt

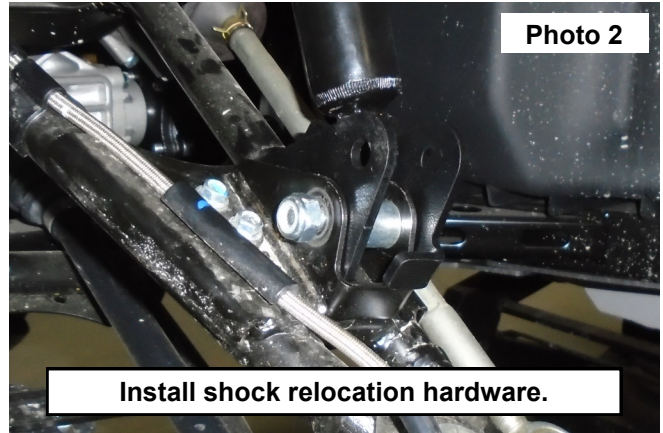
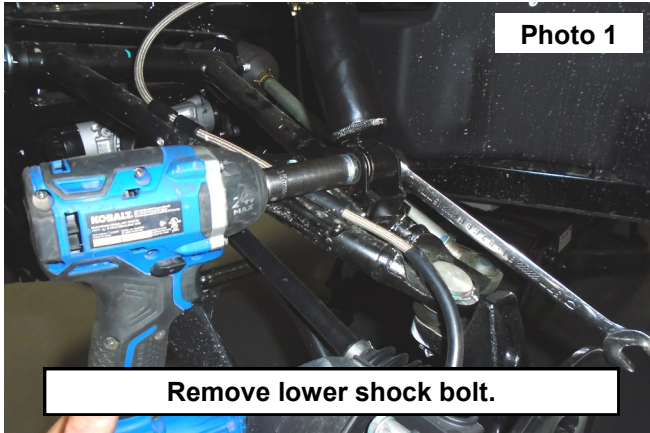
TOOLS NEEDED:

- 17mm Socket and Wrench

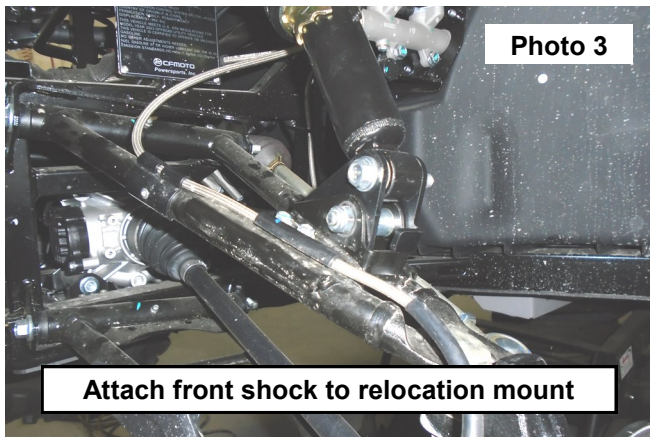


FRONT INSTALLATION INSTRUCTONS

1. Chock the rear wheels and lift the front of the vehicle off the ground using a floor jack until front suspension is at full droop. Remove the front wheels.
2. Remove the front lower shock bolt using a 17mm wrench and socket. Retain hardware for reuse. **See Photo 1.**
3. Attach the supplied front driver plate, sleeve, supplied 10mm bolt, front flat plate, and supplied 10mm nut to the lower shock mount. Tighten with a 17mm wrench and socket. **See Photo 2.**

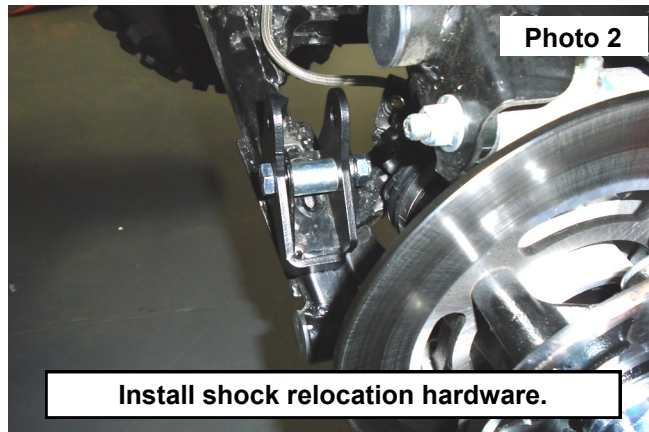
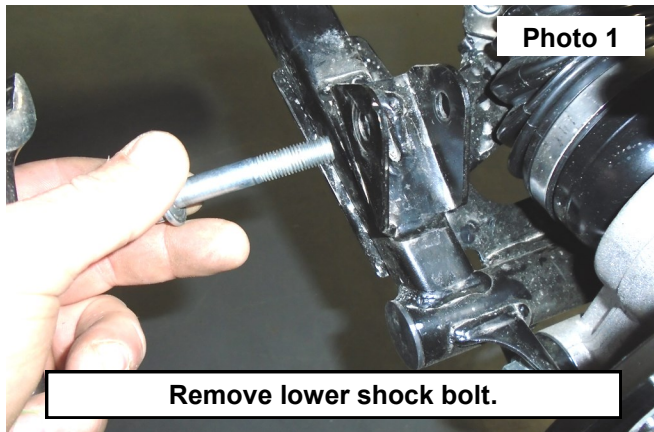


4. Attach the factory shock to the relocation bracket using the factory hardware. Tighten with a 17mm wrench and socket. **See Photo 3.**
5. Repeat for other side.
6. Reattach wheels and lower vehicle to the ground.

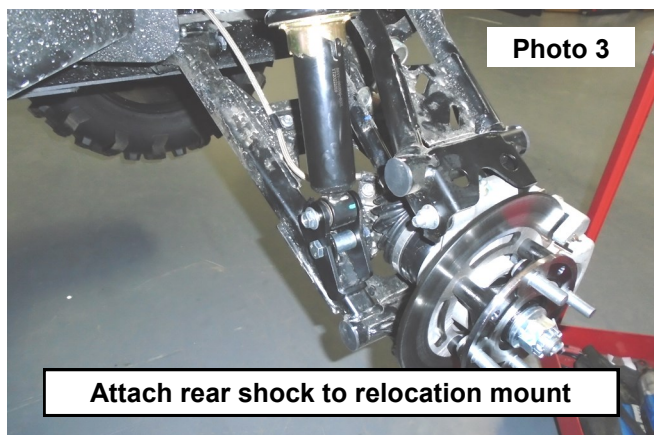


REAR INSTALLATION INSTRUCTIONS

1. Chock the front wheels and lift the rear of the vehicle off the ground using a floor jack until front suspension is at full droop. Remove the front wheels.
2. Remove the rear lower shock bolt using a 17mm wrench and socket. Retain hardware for reuse. Move rear shock out of the way. **See Photo 1.**
3. Attach the supplied rear driver plate, sleeve, supplied 10mm bolt, rear flat plate, and supplied 10mm nut to the lower shock mount. Tighten with a 17mm wrench and socket. **See Photo 2.**



4. Attach the factory shock to the relocation bracket using the factory hardware. Tighten with a 17mm wrench and socket. **See Photo 3.**
5. Repeat for other side.
6. Reattach wheels and lower vehicle to the ground.



POST INSTALLATION INSTRUCTIONS

1. Check all fasteners for proper torque. Check to ensure for adequate clearance between all rotating, mobile, fixed, and heated members. Verify clearance between exhaust and brake lines, fuel lines, fuel tank, floorboards, and wiring harness.
2. Perform steering sweep to ensure front brake hoses have adequate slack and do not contact any rotating, mobile, or heated members. Inspect rear brake hoses at full extension for adequate slack. Failure to perform hose check/ replacement may result in component failure.
3. Have a qualified alignment center align the vehicle immediately. Realign to factory specifications.
4. Perform head light check and adjustment to proper settings.
5. Check and retighten wheels at 50 miles and again at 500 miles
6. All kit components must be retightened at 500 miles and then every 300 miles after installation. Periodically check all hardware for tightness.
7. Install "Warning to Driver" decal on sun visor.

By purchasing any item sold by Rough Country, LLC, the buyer expressly warrants that he/she is in compliance with all applicable, State, and Local laws and regulations regarding the purchase, ownership, and use of the item. It shall be the buyers responsibility to comply with all Federal, State and Local laws governing the sales of any items listed, illustrated or sold. The buyer expressly agrees to indemnify and hold harmless Rough Country, LLC for all claims resulting directly or indirectly from the purchase, ownership, or use of the items.

