

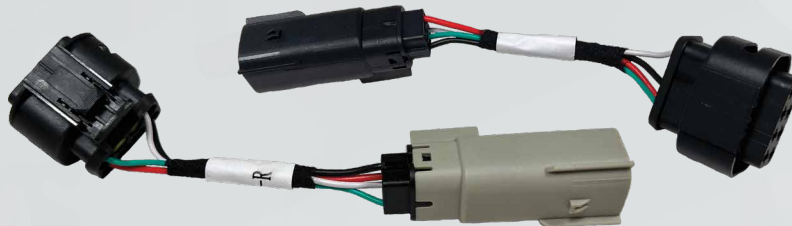
**2014-18 SIERRA  
2014-18 SILVERADO  
XB LED TAIL LIGHTS  
INSTALL GUIDE**

Warning: it is the installers responsibility to confirm compliance with state and local laws. By reading this document, you agree it is only to be used as an educational guide. Morimoto Lighting nor its dealers make guarantees on any finished results, nor are they to be held responsible for any damage, misuse, or personal injuries. If you are unable to clearly understand and adapt the information below, professional installation is recommended.

**PACKAGE CONTENTS**



**2X TAIL LIGHT ASSEMBLIES**



**2X TYPE 2 ADAPTORS**

**IMPORTANT:** These tail lights will work properly in unison with headlights from Morimoto but otherwise if your vehicle is equipped with anything but OEM turn signals (full assemblies, LED bulbs, or otherwise) in the headlights or elsewhere: You may experience a hyper flash and/or problem with the turn signal on these tail lights. This is not a defect in the tail light, and is caused by un-matched impedance with your original vehicle settings.

# 2014-18 CHEVY SILVERADO/ GMC SIERRA



## TABLE OF CONTENTS

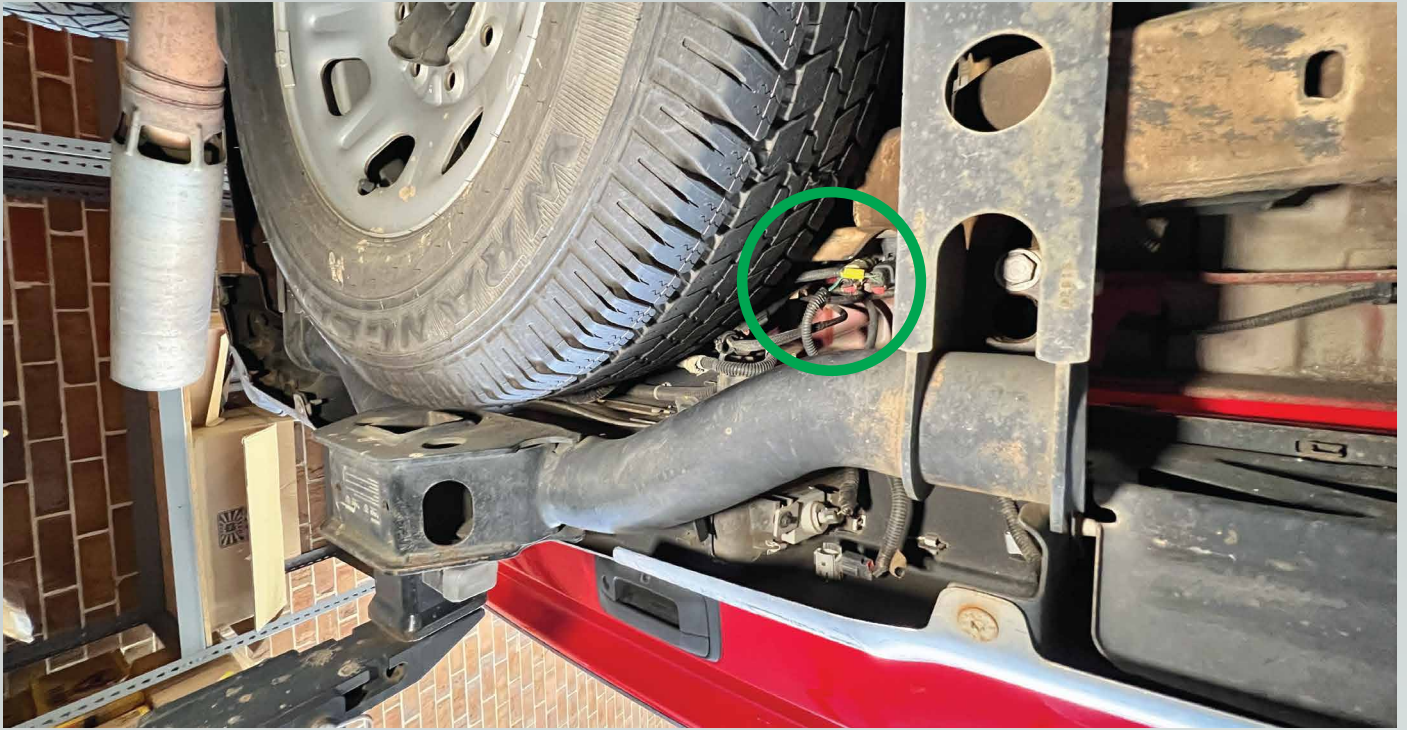
INSTALLATION PROCESS	.....	PAGE 3
BOOST BAR LICENSE PLATE LIGHT (SOLD SEPARATELY)	.....	PAGE 14

## REQUIRED TOOLS

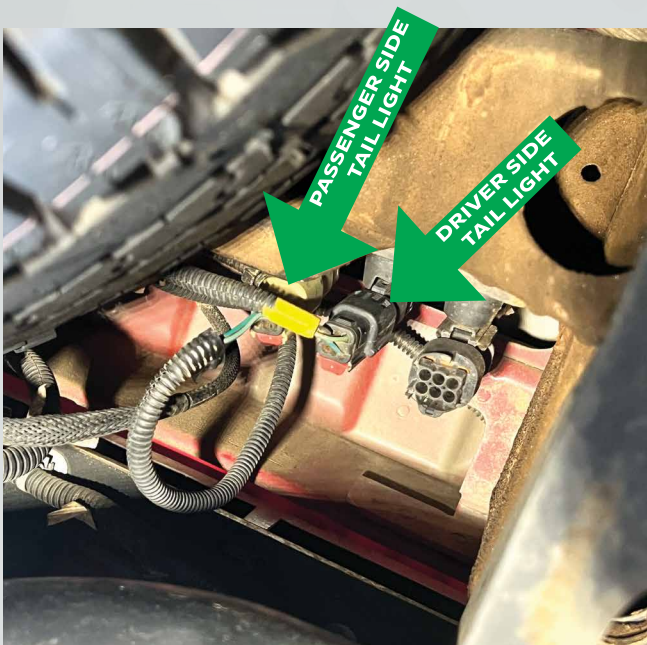
- RATCHET
- T15 TORX BIT
- T20 TORX BIT

# INSTALLATION PROCESS

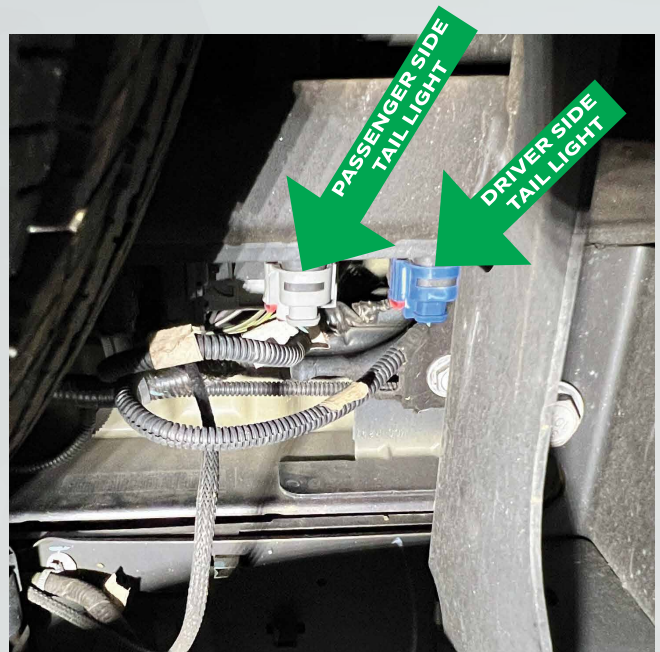
1. Crawl under your truck and locate the tail light connectors by the spare tire.



2. Disconnect the tail light harness connectors by pulling the red locking tab away from the connector and pushing down on the release tab to then separate the connectors. Shown below are the 2 types of connectors that came on these trucks, but both come apart the same way.

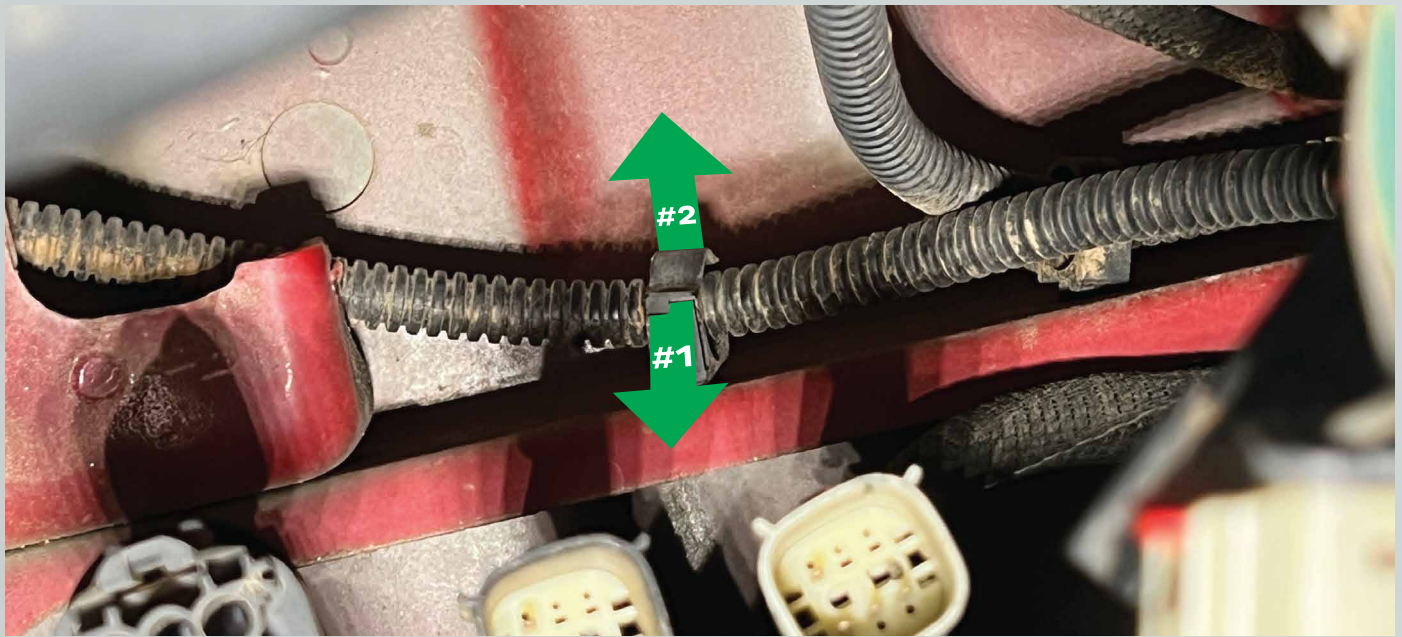


TYPE 1 CONNECTOR

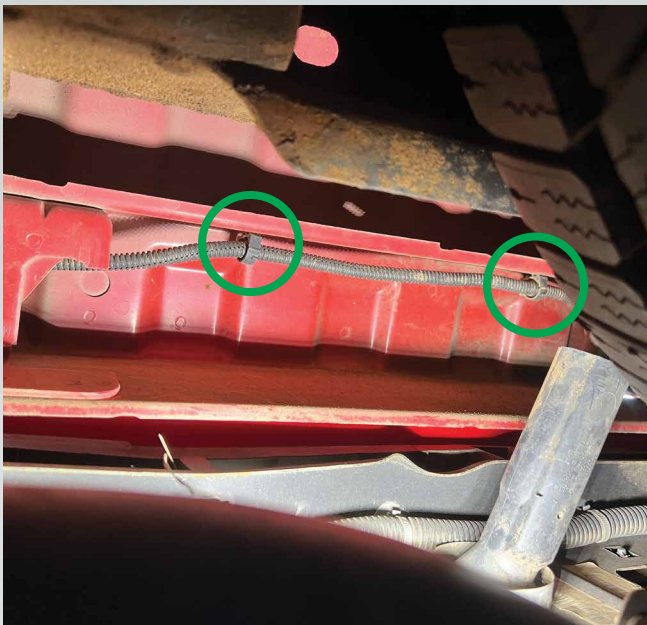


TYPE 2 CONNECTOR

3. Release these harness holders holding the driver side harness in place. To release it pull the locking tab out (#1) then pull the holding mechanism out (#2). There should only be 1-2 of these holding the harness.



4. Release the passenger side harness the same way as the driver side. There should be 3-4 clips holding the harness.



5. Remove the two (2) T15 Torx screws holding in the OEM tail lights (IMAGE 1). Note: these screws will not get reused. Slide the tail light backwards away from the truck with some force (IMAGE 2). Remove the tail light and harness off of the truck. Repeat this on the other tail light.



IMAGE 1

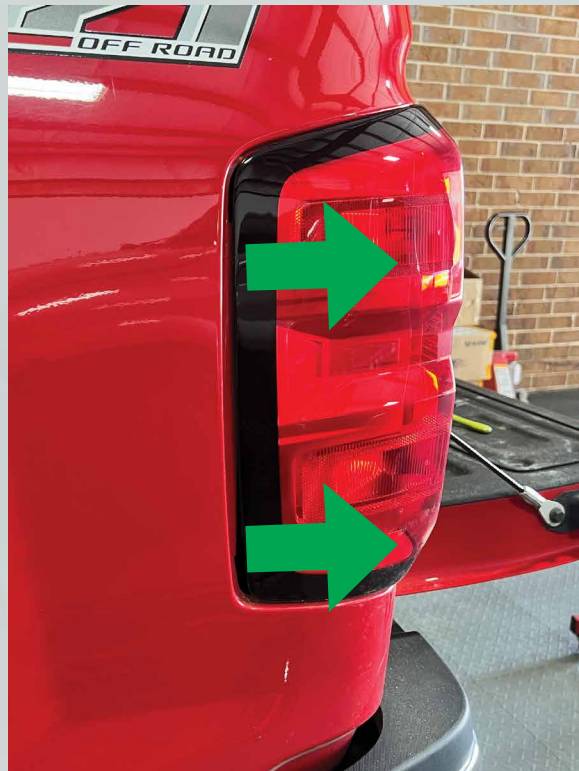


IMAGE 2

6. Take your new Morimoto tail lights and remove the two (2) T20 Torx bolts that are installed.



7. If your truck has the type 1 connector (refer to step #2) then remove the Type 2 Adaptors off of your Morimoto tail light's.



8. Take one of the Morimoto tail lights and route the harness down and under the truck, like the OEM harness was routed. Plug the Morimoto harness connectors into your OEM connector.

9. Repeat step #8 on the other tail light.

10. Turn on the truck and go through all modes to confirm that all tail light functions work.

11. For steps on installing the Boost Bar go to page #7.

12. Snap tail light into it's place on the truck and bolt it into place with the supplied bolts. Repeat on other side.

13. Under the truck, snap the Morimoto wiring harness into the OEM harness clips to clean up the wiring.

**ENJOY YOUR NEW MORIMOTO TAIL LIGHTS**

(SOLD SEPARATELY)



# BOOST BAR LICENSE PLATE LIGHT INSTALL GUIDE

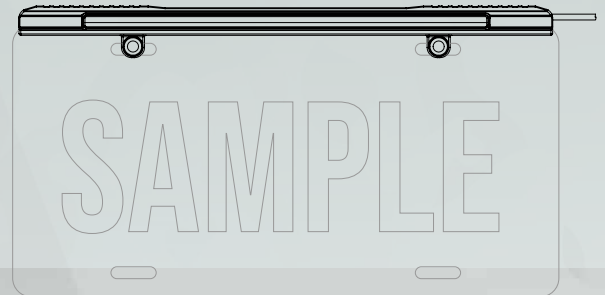
Warning: it is the installers responsibility to confirm compliance with state and local laws. By reading this document, you agree it is only to be used as an educational guide. Morimoto Lighting nor its dealers make guarantees on any finished results, nor are they to be held responsible for any damage, misuse, or personal injuries. If you are unable to clearly understand and adapt the information below, professional installation is recommended.

## PACKAGE CONTENTS

- 1x Boost Bar License Plate Light
- 1x Input Pigtail (not needed in this application)
- 1x Double Wire T-Tap (not needed in this application)

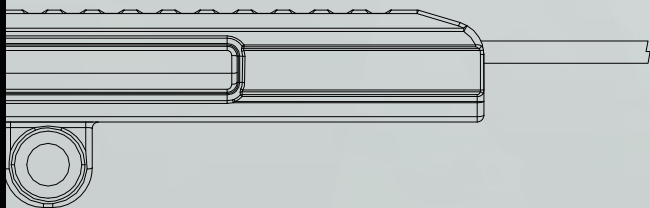
## TOOLS REQUIRED

- Wire Cutters
- Zip Ties
- 1/4" Drill Bit
- Drill



# INSTALLATION PROCESS

## BOOST BAR



1. Remove your license plate and bolt in the Boost Bar. Mark on the bumper where the wire needs to go through.



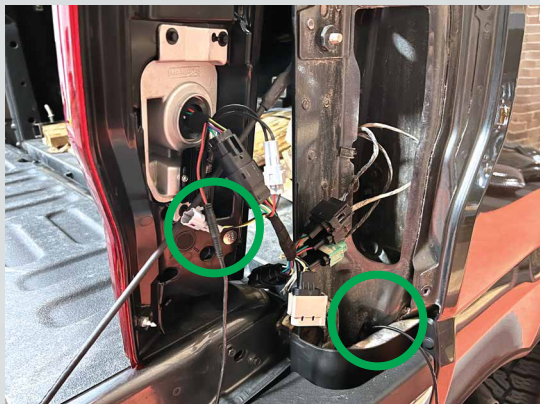
2. Drill a 1/4" hole in your bumper and pass the wiring through. and reinstall your license plate with Boost Bar.



3. Run the wiring behind the bumper along the top, and secure using zip ties.



4. Run the wiring up through the tail light hole and plug into your Passenger Morimoto tail light. Secure remaining wiring with zip ties.



## DIRECT CONNECTION TO RIGHT MORIMOTO XB LED TAIL LIGHTS

