



THE AUTOMOTIVE LIGHTING BENCHMARK

INSTALL GUIDE

15-20 GMC YUKON TAIL LIGHTS

LF766



WARNING: IT IS THE INSTALLER'S RESPONSIBILITY TO CONFIRM COMPLIANCE WITH STATE AND LOCAL LAWS. BY READING THIS DOCUMENT, YOU AGREE IT IS ONLY TO BE USED AS AN EDUCATIONAL GUIDE. MORIMOTO LIGHTING NOR ITS DEALERS MAKE GUARANTEES ON ANY FINISHED RESULTS, NOR ARE THEY TO BE HELD RESPONSIBLE FOR ANY DAMAGE, MISUSE, OR PERSONAL INJURIES. IF YOU ARE UNABLE TO CLEARLY UNDERSTAND AND ADAPT THE INFORMATION BELOW, PROFESSIONAL INSTALLATION IS RECOMMENDED.

IMPORTANT: IF YOUR VEHICLE IS EQUIPPED WITH ANYTHING BUT MORIMOTO OR OEM TAIL LIGHTS, SIDE MARKERS OR OTHER OEM EXTERIOR LIGHTING; YOU MAY EXPERIENCE A HYPER FLASH AND/OR PROBLEM WITH THE SEQUENTIAL SIGNAL SETTING ON THESE HEADLIGHTS. THIS IS NOT A DEFECT IN THE HEADLIGHT AND CAUSED BY UN-MATCHED IMPEDANCE WITH YOUR ORIGINAL VEHICLE SETTINGS.



15-20 GMC YUKON TAIL LIGHTS

TABLE OF CONTENTS	PAGE
DISASSEMBLY -----	3
BACKUP LIGHT BOOST BAR INSTALL (OPTIONAL)---	8
INSTALLATION -----	14

WHAT'S INCLUDED



PAIR OF TAIL LIGHTS



1X BACKUP LIGHT
EXTENSION HARNESS

REQUIRED TOOLS

- HOOD PROP
- TRIM REMOVAL TOOL
- T15 TORX BIT

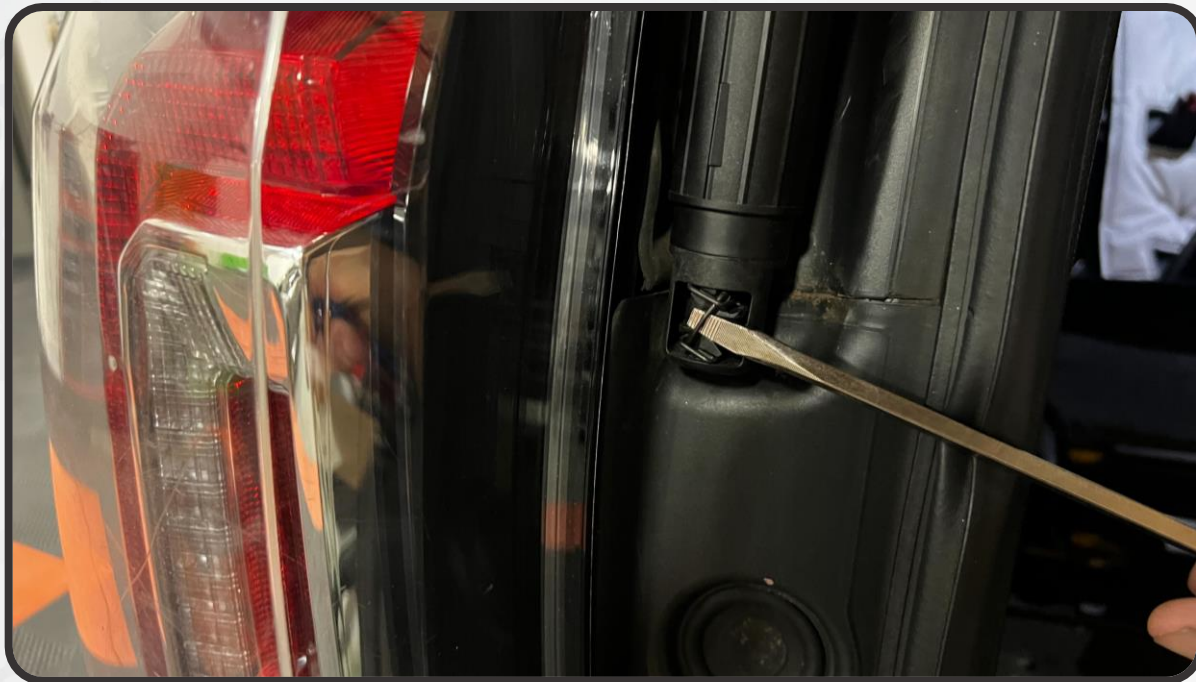
*FOR BACKUP LIGHT BOOST BAR INSTALL

- T30 TORX BIT
- DRILL AND 5/16" BIT



15-20 GMC YUKON TAIL LIGHTS

1. OPEN THE REAR LIFT-GATE AND SUPPORT IT USING A HOOD PROP
2. REMOVE THE PLASTIC COVER FROM THE BASE OF THE LIFT-GATE'S STRUT AND USE A FLATHEAD SCREWDRIVER TO PRY OUT ON THE METAL CLIP SECURING IT TO THE VEHICLE



3. WITH THE CLIP IN THE OUTWARD "UNLOCKED" POSITION, PULL THE BOTTOM OF THE STRUT AWAY FROM THE VEHICLE TO RELEASE IT FROM ITS MOUNT



15-20 GMC YUKON TAIL LIGHTS

4. USE A TRIM REMOVAL TOOL TO PRY OUT AND REMOVE THE LOWER TRIM PANEL NEXT TO THE TAILLIGHT

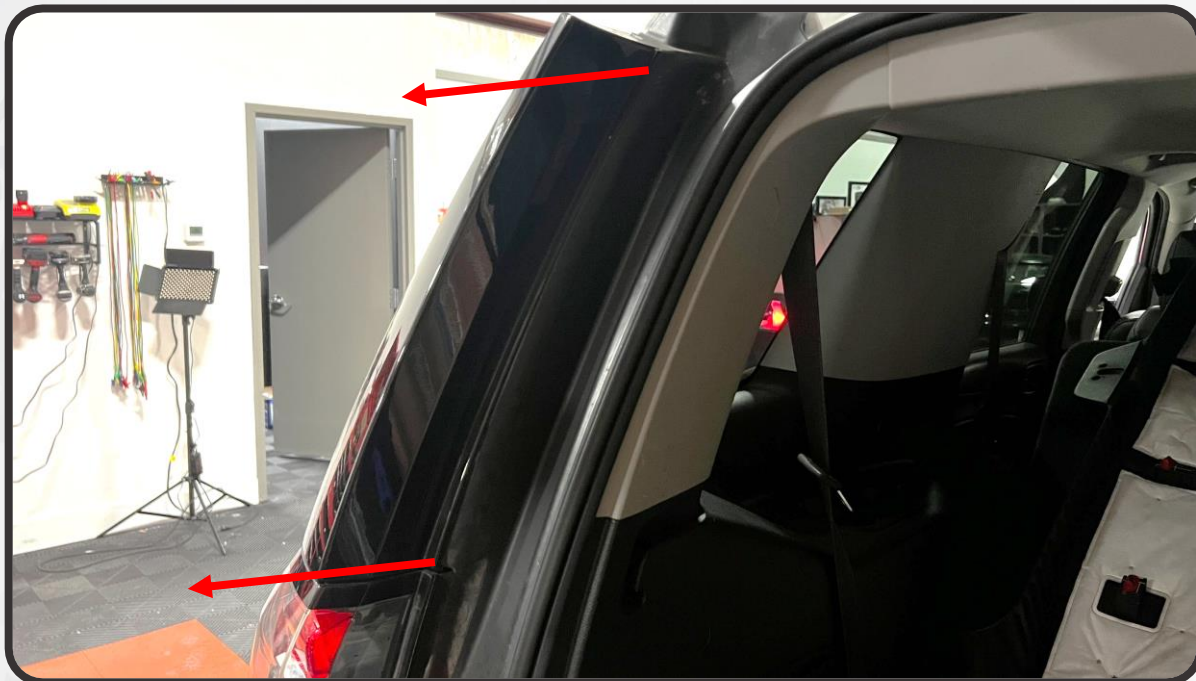


5. REMOVE THE T15 TORX SCREW FROM THE TOP OF THE UPPER TRIM PANEL



15-20 GMC YUKON TAIL LIGHTS

6. USE THE TRIM REMOVAL TOOL TO PRY OUT AND REMOVE THE UPPER TRIM PANEL ABOVE THE TAILLIGHT



7. REMOVE THE THREE T15 TORX SCREWS FROM THE BODY PANEL ABOVE THE TAILLIGHT. WITH THE SCREWS REMOVED, PULL THE PANEL OFF OF THE VEHICLE



15-20 GMC YUKON TAIL LIGHTS

- MOVING UNDER THE REAR OF THE VEHICLE BENEATH THE TAILLIGHT, LOCATE THE MAIN TAILLIGHT CONNECTOR, AND DISCONNECT IT



- REMOVE THE TWO T15 TORX SCREWS FROM THE TAILLIGHT. WITH THE SCREWS REMOVED, PULL THE LIGHT OFF OF THE VEHICLE



15-20 GMC YUKON TAIL LIGHTS

10. PULL THE HARNESS CONNECTED TO THE TAILLIGHT UP FROM BENEATH THE VEHICLE AND OUT THROUGH THE TAILLIGHT CAVITY



11. REPEAT STEPS 2-10 ON THE OPPOSITE SIDE
12. IF YOU PLAN TO INSTALL THE MORIMOTO BACKUP LIGHT BOOST BAR (SKU: LED700, SOLD SEPARATELY), FOLLOW THE INSTRUCTIONS BELOW. IF NOT, SKIP AHEAD TO STEP 27 ON PAGE 14



15-20 GMC YUKON TAIL LIGHTS

13. PRY THE UPPER HATCH INTERIOR PANEL LOOSE AND PULL IT DOWN TO REMOVE IT FROM THE HATCH

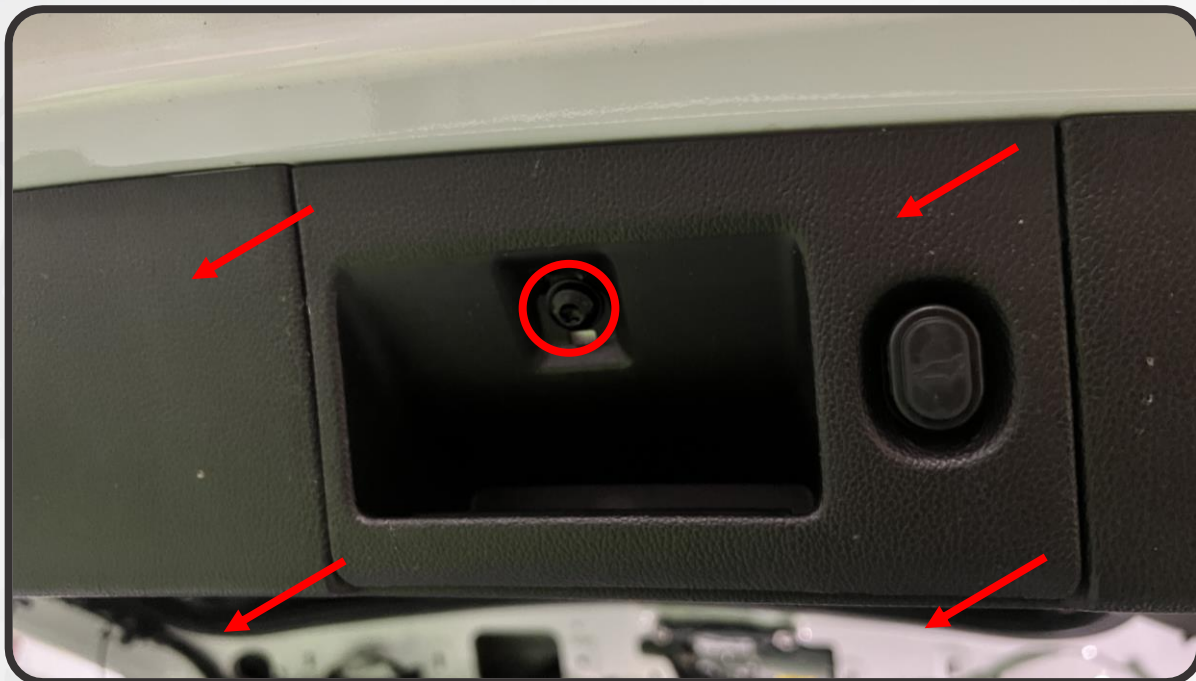


14. LOWER THE HATCH, OPEN THE GLASS, AND PRY THE TWO PLASTIC CLIPS NEXT TO THE GLASS LATCH LOOSE



15-20 GMC YUKON TAIL LIGHTS

15. LIFT THE HATCH BACK INTO THE UPRIGHT POSITION AND REMOVE THE ONE T30 TORX BIT FROM THE PANEL AT THE BOTTOM OF THE HATCH, THEN PRY THE PANEL LOOSE



16. DISCONNECT THE PLUG ON THE BACK OF THE PANEL



15-20 GMC YUKON TAIL LIGHTS

17. PRY THE LATCH PANEL FROM THE BOTTOM OF THE HATCH LOOSE AND REMOVE IT

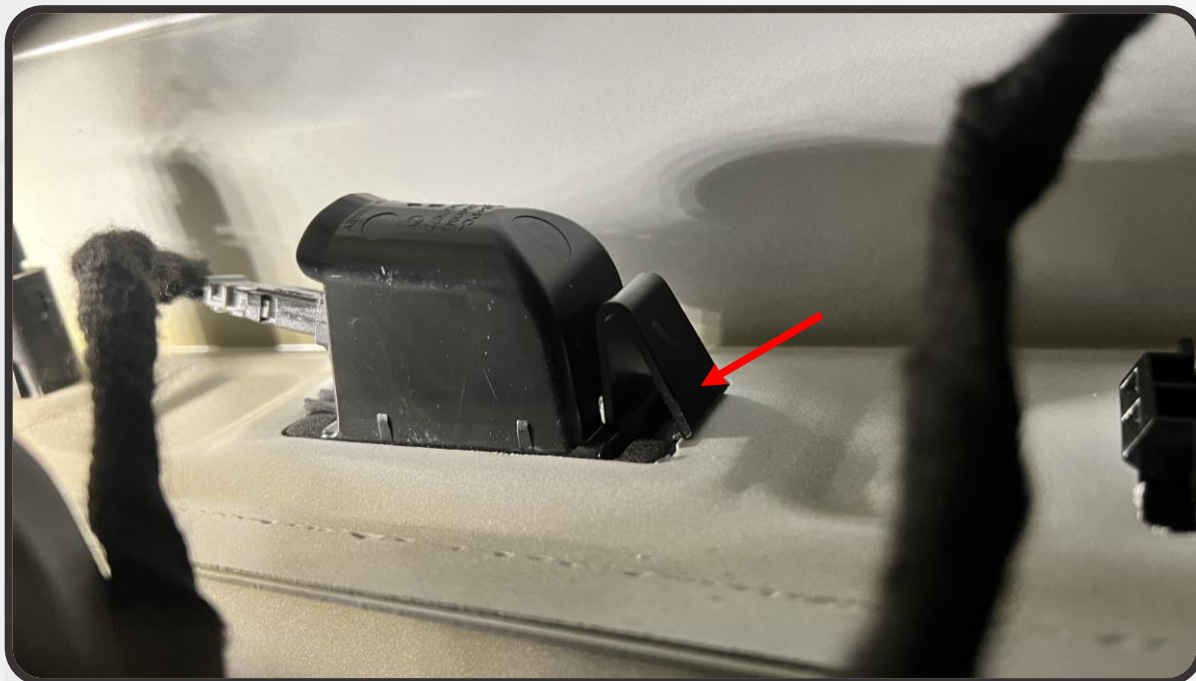


18. PRY LOOSE AND REMOVE THE LOWER HATCH INTERIOR PANEL



15-20 GMC YUKON TAIL LIGHTS

19. REMOVE THE LICENSE PLATE LIGHT BY PRESSING IN ON THE TAB, AND PUSHING THE ASSEMBLY OUT



20. DRILL A 5/16" HOLE IN THE LICENSE PLATE LIGHT ASSEMBLY

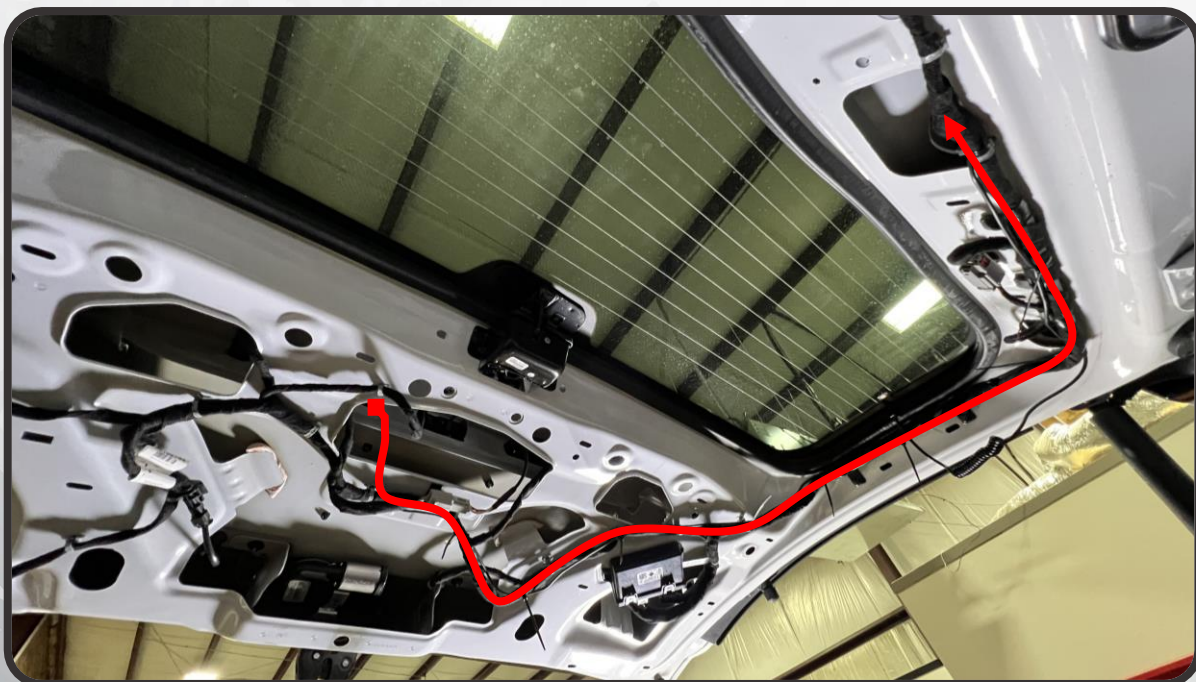


15-20 GMC YUKON TAIL LIGHTS

21. INSTALL THE BOOST BAR ONTO YOUR LICENSE PLATE USING YOUR TWO UPPER LICENSE PLATE SCREWS.
22. REINSTALL THE LICENSE PLATE LIGHT ASSEMBLY, AND PASS THE BOOST BAR WIRING THROUGH THE HOLE YOU JUST DRILLED



23. ROUTE THE BOOST BAR WIRE ALONG YOUR FACTORY HARNESS TO THE TOP OF THE HATCH



15-20 GMC YUKON TAIL LIGHTS

24. ROUTE THE WIRE ALONG THE TOP OF THE HATCH TO THE CENTER, AND PASS IT THROUGH THE CUTOUT TO THE HATCH WIRING BOOT



25. POKE A SMALL HOLE IN THE BOOT. PASS THE WIRE THROUGH THAT HOLE AND RUN IT ALONG THE BOOT. LEAVE THE HARNESS HERE FOR NOW



26. REINSTALL THE HATCH INTERIOR PANELS IN THE REVERSE ORDER YOU REMOVED THEM



15-20 GMC YUKON TAIL LIGHTS

27. REINSTALL THE FIVE T15 SCREWS TO SECURE THE HOUSING TO THE VEHICLE



28. CONNECT THE NEW TAILLIGHT PLUG TO THE VEHICLE HARNESS



15-20 GMC YUKON TAIL LIGHTS

29. IF YOU ARE INSTALLING THE BOOST BAR REVERSE LIGHT, CONNECT THE EXTENSION HARNESS TO THE PLUG WE LEFT AT THE TOP OF THE HATCH



30. ROUTE THE EXTENSION HARNESS DOWN TO THE PASSENGER SIDE TAILLIGHT

31. REPEAT STEPS 27 AND 28 ON THE PASSENGER SIDE. CONNECT THE REVERSE EXTENSION HARNESS TO THE PASSENGER SIDE AS WELL (SHOWN BELOW) IF YOU ARE INSTALLING THE BOOST BAR



32. GET IN THE VEHICLE AND CONFIRM THAT ALL FUNCTIONS ARE WORKING PROPERLY

33. REINSTALL THE PLASTIC TRIM AROUND THE TAIL LIGHTS AND RECONNECT THE HATCH STRUTS



15-20 GMC YUKON TAIL LIGHTS



– ENJOY YOUR NEW MORIMOTO XB TAIL LIGHTS! –

