



THE AUTOMOTIVE LIGHTING BENCHMARK

INSTALL GUIDE

15-20 TAHOE/SUBURBAN TAIL LIGHTS

LF767



WARNING: IT IS THE INSTALLER'S RESPONSIBILITY TO CONFIRM COMPLIANCE WITH STATE AND LOCAL LAWS. BY READING THIS DOCUMENT, YOU AGREE IT IS ONLY TO BE USED AS AN EDUCATIONAL GUIDE. MORIMOTO LIGHTING NOR ITS DEALERS MAKE GUARANTEES ON ANY FINISHED RESULTS, NOR ARE THEY TO BE HELD RESPONSIBLE FOR ANY DAMAGE, MISUSE, OR PERSONAL INJURIES. IF YOU ARE UNABLE TO CLEARLY UNDERSTAND AND ADAPT THE INFORMATION BELOW, PROFESSIONAL INSTALLATION IS RECOMMENDED.

IMPORTANT: IF YOUR VEHICLE IS EQUIPPED WITH ANYTHING BUT MORIMOTO OR OEM TAIL LIGHTS, SIDE MARKERS OR OTHER OEM EXTERIOR LIGHTING; YOU MAY EXPERIENCE A HYPER FLASH AND/OR PROBLEM WITH THE SEQUENTIAL SIGNAL SETTING ON THESE HEADLIGHTS. THIS IS NOT A DEFECT IN THE HEADLIGHT AND CAUSED BY UN-MATCHED IMPEDANCE WITH YOUR ORIGINAL VEHICLE SETTINGS.



15-20 TAHOE/SUBURBAN TAIL LIGHTS

TABLE OF CONTENTS	PAGE
DISASSEMBLY -----	3
INSTALLATION -----	7
BACKUP LIGHT BOOST BAR INSTALL (OPTIONAL)---	10

PACKAGE CONTENTS



PAIR OF TAIL LIGHTS



REVERSE EXTENSION
WIRE



4X MAGNET MOUNT
RESISTORS

REQUIRED TOOLS

- HOOD PROP
- TRIM REMOVAL TOOL
- T15 TORX BIT

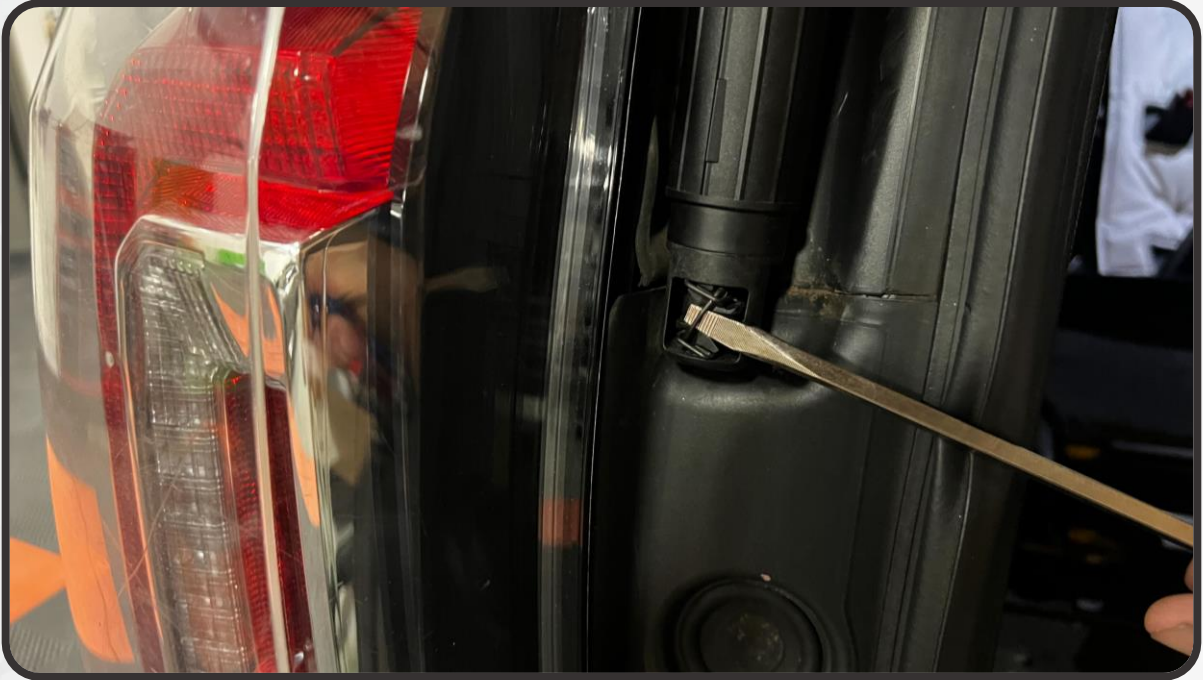
*FOR BACKUP LIGHT BOOST BAR INSTALL

- T30 TORX BIT
- DRILL AND 5/16" BIT



15-20 TAHOE/SUBURBAN TAIL LIGHTS

1. OPEN THE REAR LIFT-GATE AND SUPPORT IT USING A HOOD PROP
2. REMOVE THE PLASTIC COVER FROM THE BASE OF THE LIFT-GATE'S STRUT AND USE A FLATHEAD SCREWDRIVER TO PRY OUT ON THE METAL CLIP SECURING IT TO THE VEHICLE



3. WITH THE CLIP IN THE OUTWARD "UNLOCKED" POSITION, PULL THE BOTTOM OF THE STRUT AWAY FROM THE VEHICLE TO RELEASE IT FROM ITS MOUNT



15-20 TAHOE/SUBURBAN TAIL LIGHTS

4. USE A TRIM REMOVAL TOOL TO PRY OUT AND REMOVE THE LOWER TRIM PANEL NEXT TO THE TAIL LIGHT

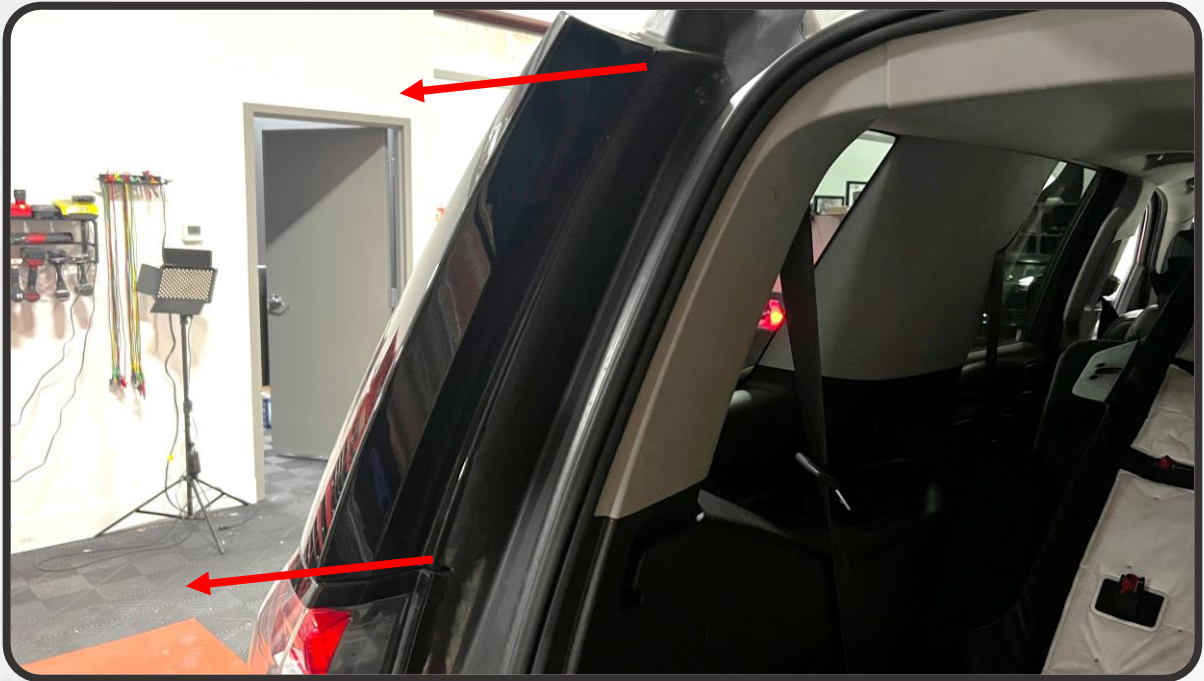


5. REMOVE THE T15 TORX SCREW FROM THE TOP OF THE UPPER TRIM PANEL



15-20 TAHOE/SUBURBAN TAIL LIGHTS

6. USE THE TRIM REMOVAL TOOL TO PRY OUT AND REMOVE THE UPPER TRIM PANEL ABOVE THE TAIL LIGHT



7. REMOVE THE THREE T15 TORX SCREWS FROM THE BODY PANEL ABOVE THE TAIL LIGHT. WITH THE SCREWS REMOVED, PULL THE PANEL OFF OF THE VEHICLE



15-20 TAHOE/SUBURBAN TAIL LIGHTS

- MOVING UNDER THE REAR OF THE VEHICLE BENEATH THE TAIL LIGHT, LOCATE THE MAIN TAIL LIGHT CONNECTOR, AND DISCONNECT IT



- REMOVE THE TWO T15 TORX SCREWS FROM THE TAIL LIGHT. WITH THE SCREWS REMOVED, PULL THE LIGHT OFF OF THE VEHICLE

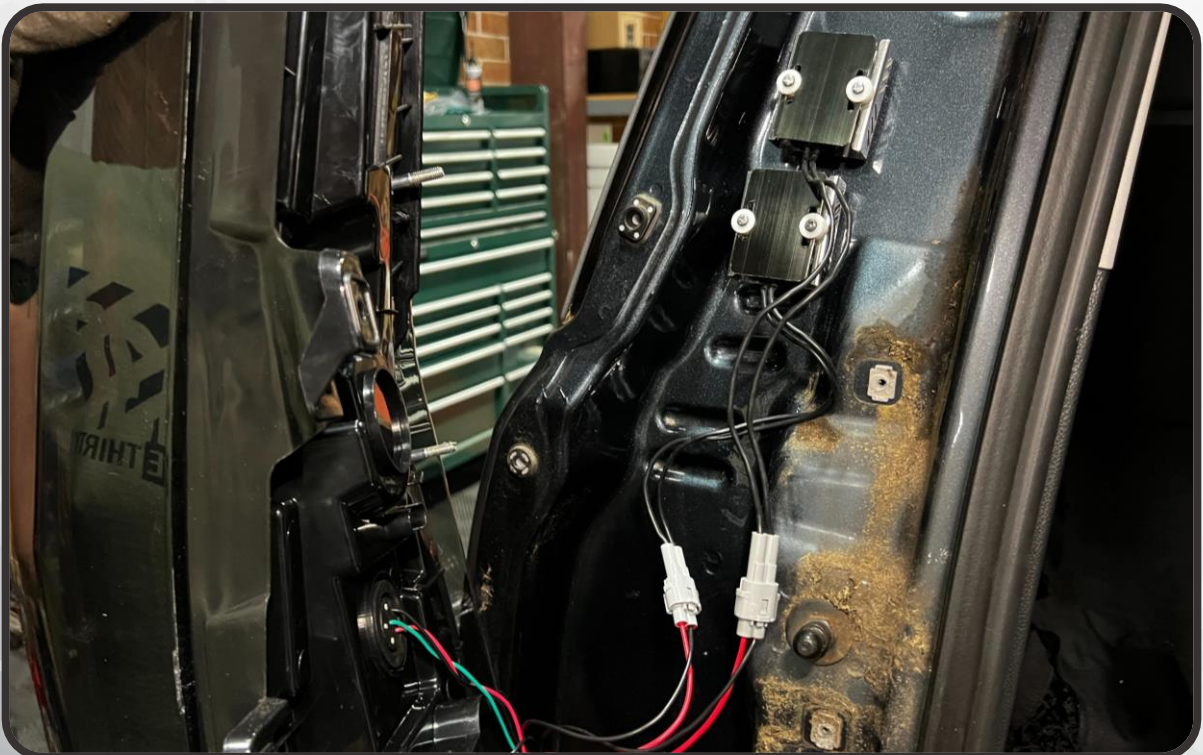


15-20 TAHOE/SUBURBAN TAIL LIGHTS

10. PULL THE HARNESS CONNECTED TO THE TAIL LIGHT UP FROM BENEATH THE VEHICLE AND OUT THROUGH THE TAIL LIGHT CAVITY



11. ATTACH THE TWO MAGNET MOUNTED RESISTORS TO THE BODY OF THE VEHICLE BEHIND THE TAIL LIGHT, AND CONNECT THEM TO THE NEW TAIL LIGHT ASSEMBLY



15-20 TAHOE/SUBURBAN TAIL LIGHTS

12. FEED THE WIRE HARNESS FOR THE NEW TAIL LIGHT BACK DOWN TO THE UNDERSIDE OF THE VEHICLE

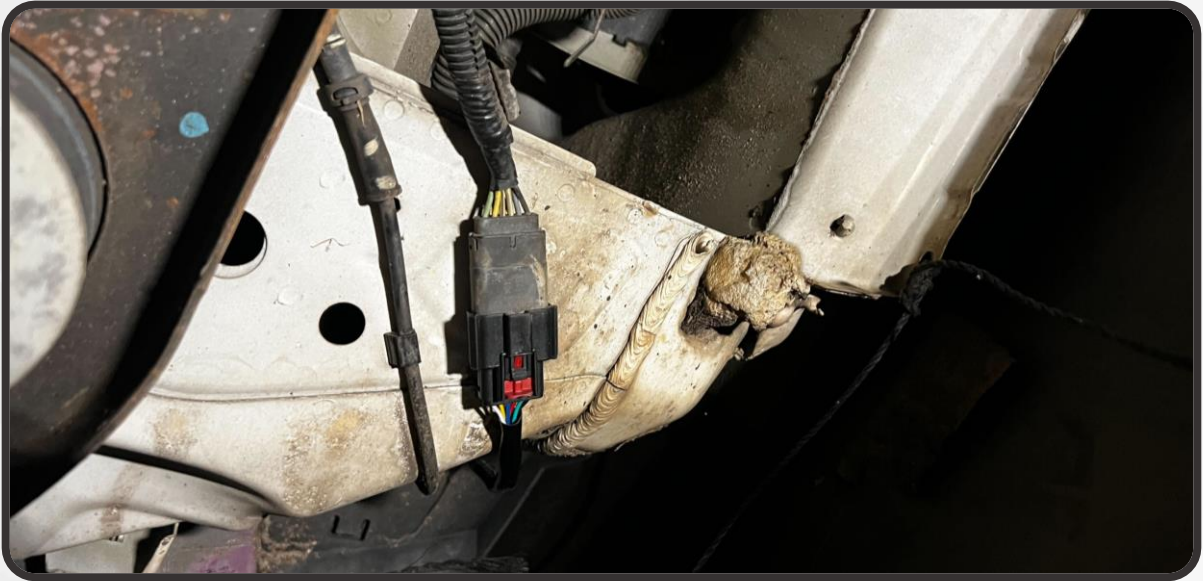


13. ALIGN THE TAIL LIGHT WITH THE VEHICLE, AND FIT IT INTO PLACE. REINSTALL THE FIVE T15 SCREWS TO SECURE THE HOUSING TO THE VEHICLE



15-20 TAHOE/SUBURBAN TAIL LIGHTS

14. CONNECT THE NEW TAIL LIGHT PLUG TO THE VEHICLE HARNESS



15. REPEAT STEPS 2-14 ON THE RIGHT SIDE. IF YOU PLAN TO INSTALL THE MORIMOTO BACKUP LIGHT BOOST BAR (SKU: LED700 SOLD SEPARATELY), CONNECT THE BOOST BAR EXTENSION WIRE (SHOWN BELOW) AND ROUTE IT UP TO THE TOP OF THE HATCH OPENING. LEAVE IT THERE SO WE CAN CONNECT THE BOOST BAR TO IT LATER



15-20 TAHOE/SUBURBAN TAIL LIGHTS

16. GET IN THE VEHICLE AND CONFIRM THAT ALL FUNCTIONS ARE WORKING PROPERLY
17. REINSTALL THE PLASTIC TRIM AROUND THE TAIL LIGHTS AND RECONNECT THE HATCH STRUTS
18. IF YOU ARE NOT INSTALLING THE OPTIONAL BACKUP LIGHT BOOST BAR, THEN YOUR INSTALLATION IS COMPLETE. IF YOU WILL BE INSTALLING THE BAR, CONTINUE FOLLOWING THE STEPS BELOW.
19. PRY THE UPPER HATCH INTERIOR PANEL LOOSE AND PULL IT DOWN TO REMOVE IT FROM THE HATCH

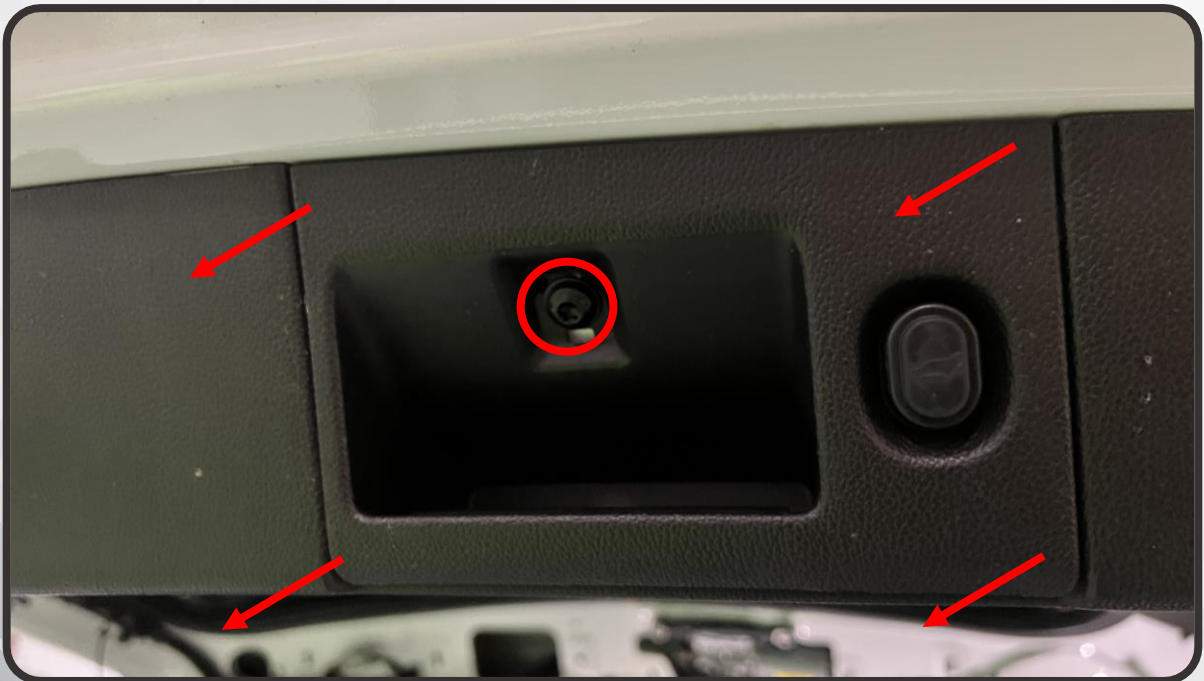


15-20 TAHOE/SUBURBAN TAIL LIGHTS

20. LOWER THE HATCH, OPEN THE GLASS, AND PRY THE TWO PLASTIC CLIPS NEXT TO THE GLASS LATCH LOOSE



21. LIFT THE HATCH BACK INTO THE UPRIGHT POSITION AND REMOVE THE ONE T30 TORX BIT FROM THE PANEL AT THE BOTTOM OF THE HATCH, THEN PRY THE PANEL LOOSE



15-20 TAHOE/SUBURBAN TAIL LIGHTS

22. DISCONNECT THE PLUG ON THE BACK OF THE PANEL

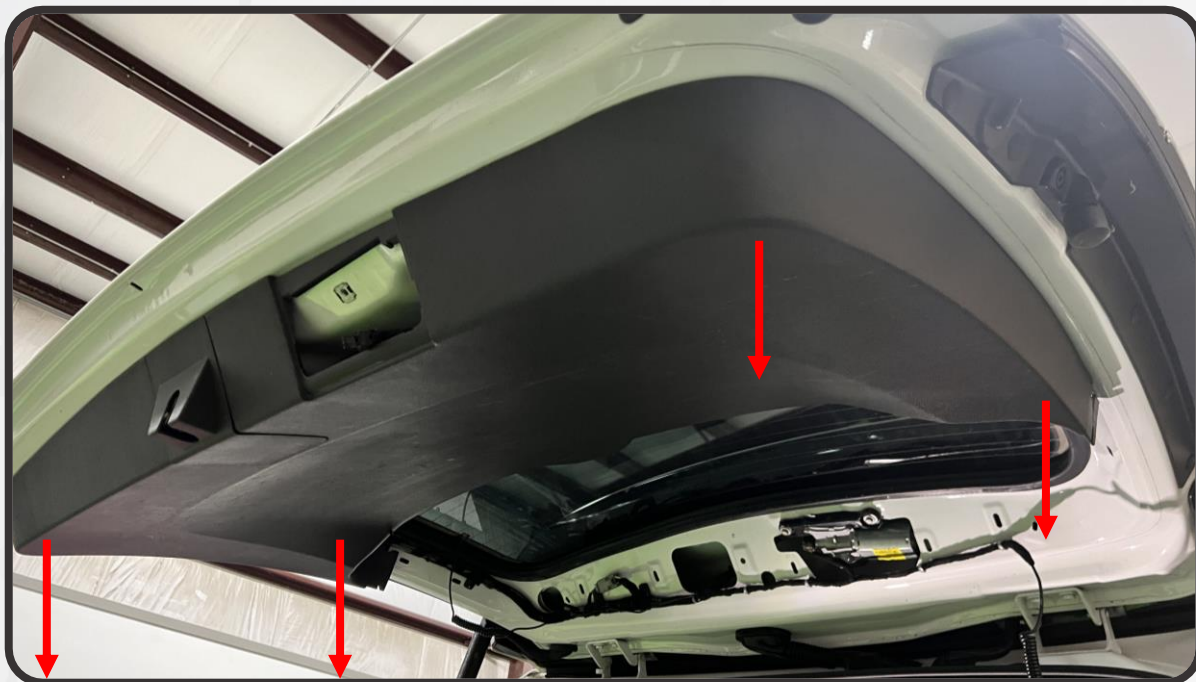


23. PRY THE LATCH PANEL LOOSE FROM THE BOTTOM OF THE HATCH AND REMOVE IT

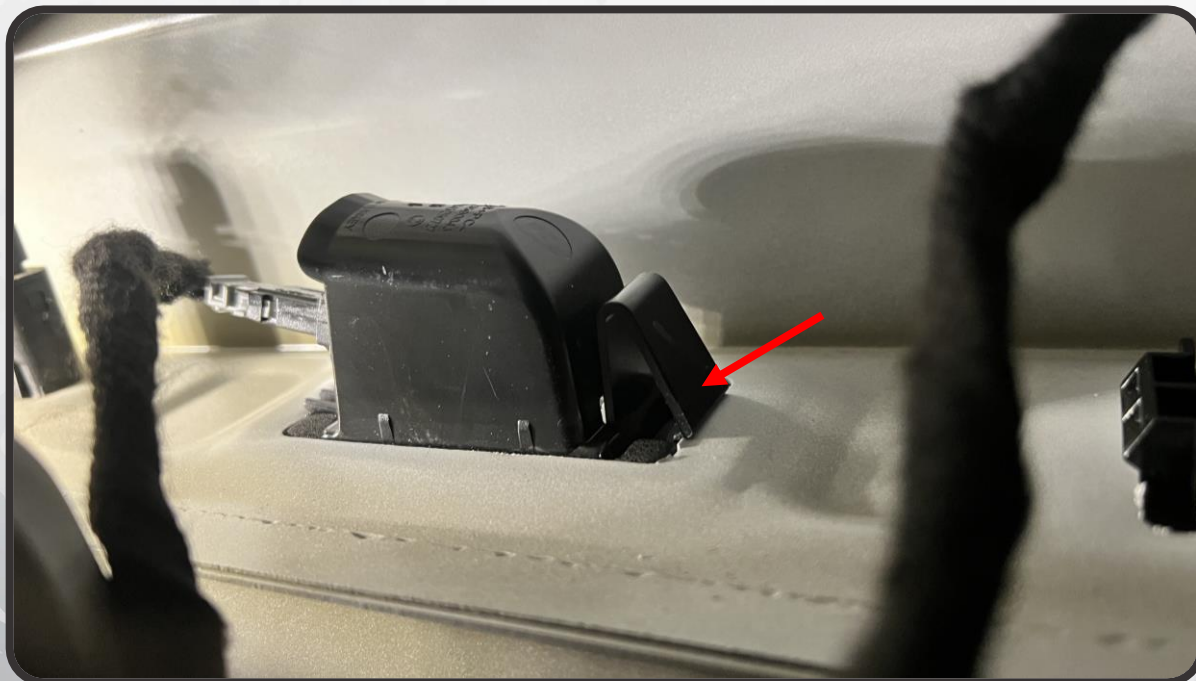


15-20 TAHOE/SUBURBAN TAIL LIGHTS

24. PRY LOOSE AND REMOVE THE LOWER HATCH INTERIOR PANEL



25. REMOVE THE LICENSE PLATE LIGHT BY PRESSING IN ON THE TAB, AND PUSHING THE ASSEMBLY OUT



15-20 TAHOE/SUBURBAN TAIL LIGHTS

26. DRILL A 5/16" HOLE IN THE LICENSE PLATE LIGHT ASSEMBLY



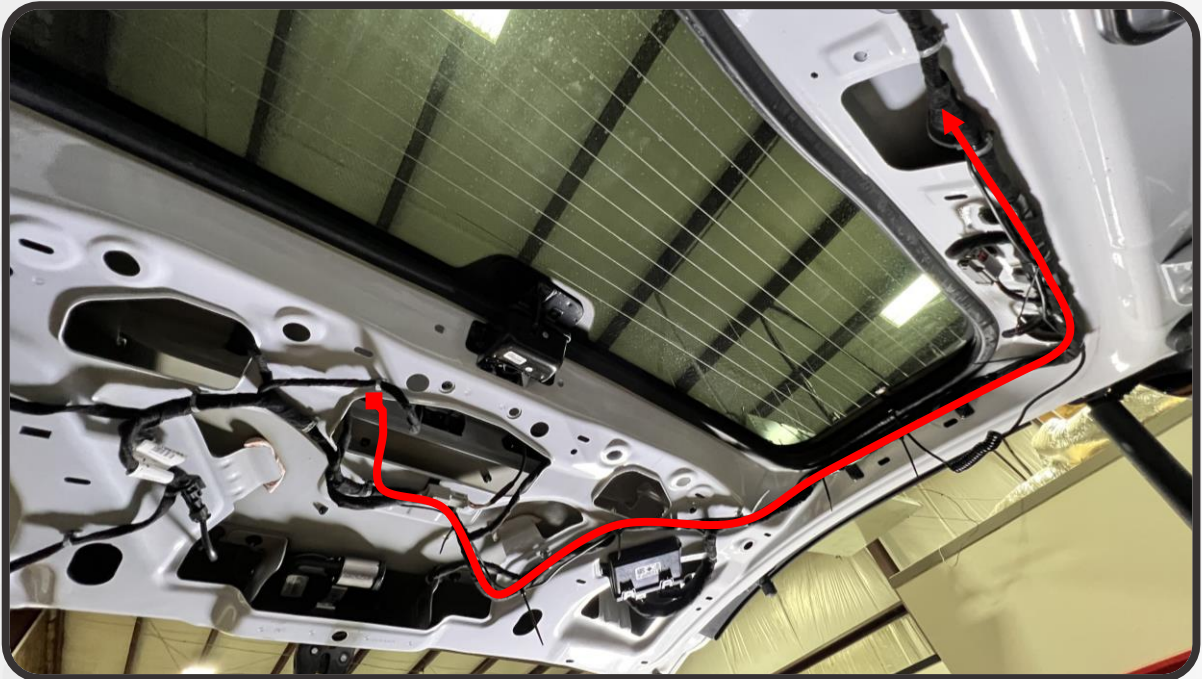
27. INSTALL THE BOOST BAR ONTO YOUR LICENSE PLATE USING YOUR TWO UPPER LICENSE PLATE SCREWS.

28. REINSTALL THE LICENSE PLATE LIGHT ASSEMBLY, AND PASS THE BOOST BAR WIRING THROUGH THE HOLE YOU JUST DRILLED



15-20 TAHOE/SUBURBAN TAIL LIGHTS

29. ROUTE THE BOOST BAR WIRE ALONG YOUR FACTORY HARNESS TO THE TOP OF THE HATCH



30. ROUTE THE WIRE ALONG THE TOP OF THE HATCH TO THE CENTER, AND PASS IT THROUGH THE CUTOUT TO THE HATCH WIRING BOOT



15-20 TAHOE/SUBURBAN TAIL LIGHTS

31. POKE A SMALL HOLE IN THE BOOT. PASS THE WIRE THROUGH THAT HOLE AND RUN IT ALONG THE BOOT



32. CONNECT THE WIRING FROM THE BOOST BAR TO THE EXTENSION YOU INSTALLED EARLIER



33. REINSTALL THE HATCH INTERIOR PANELS IN THE REVERSE ORDER YOU REMOVED THEM



15-20 TAHOE/SUBURBAN TAIL LIGHTS



- ENJOY YOUR NEW MORIMOTO XB TAIL LIGHTS! -

