



THE AUTOMOTIVE LIGHTING BENCHMARK

INSTALL GUIDE

2017-2019 FORD SUPER DUTY FACELIFT



WARNING: IT IS THE INSTALLERS RESPONSIBILITY TO CONFIRM COMPLIANCE WITH STATE AND LOCAL LAWS. BY READING THIS DOCUMENT, YOU AGREE IT IS ONLY TO BE USED AS AN EDUCATIONAL GUIDE. MORIMOTO LIGHTING NOR ITS DEALERS MAKE GUARANTEES ON ANY FINISHED RESULTS, NOR ARE THEY TO BE HELD RESPONSIBLE FOR ANY DAMAGE, MISUSE, OR PERSONAL INJURIES. IF YOU ARE UNABLE TO CLEARLY UNDERSTAND AND ADAPT THE INFORMATION BELOW, PROFESSIONAL INSTALLATION IS RECOMMENDED.

IMPORTANT: IF YOUR VEHICLE IS EQUIPPED WITH ANYTHING BUT MORIMOTO OR OEM TAIL LIGHTS, SIDE MARKERS OR OTHER OEM EXTERIOR LIGHTING; YOU MAY EXPERIENCE A HYPER FLASH AND/OR PROBLEM WITH THE SEQUENTIAL SIGNAL SETTING ON THESE HEADLIGHTS. THIS IS NOT A DEFECT IN THE HEADLIGHT, AND CAUSED BY UN-MATCHED IMPEDANCE WITH YOUR ORIGINAL VEHICLE SETTINGS.



2017-2019 FORD SUPER DUTY FACELIFT

TABLE OF CONTENTS

PAGE

- **DISASSEMBLY** ----- 4
- **GRILLE SUPPORT INSTALLATION** ----- 10
- **HEADLIGHT INSTALLATION** ----- 13
- **GRILLE INSTALLATION** ----- 17
- **HEADLIGHT AIMING** ----- 19

FACELIFT GRILLE SUPPORT PACKAGE CONTENTS



1X REPLACEMENT GRILLE SUPPORT



2X OEM LED HEADLIGHT ADAPTERS



2X GRILLE/HEADLIGHT
BOLTS



8X GRILLE SUPPORT
SPACERS



10X C-CLIPS

20-22 SUPER DUTY XB HEADLIGHT PACKAGE CONTENTS

NOT INCLUDED WITH FACELIFT KIT



2X HEADLIGHT ASSEMBLIES
WHITE OR AMBER



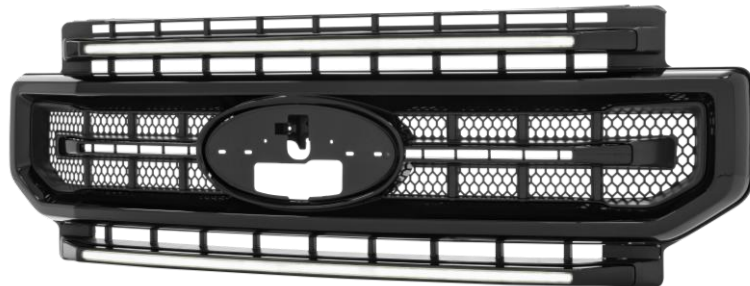
1X DRL FUSE TAP



2017-2019 FORD SUPER DUTY FACELIFT

2020-2022 SUPER DUTY GRILLE PACKAGE CONTENTS

NOT INCLUDED WITH FACELIFT KIT



1X XBG GRILLE
WHITE OR AMBER LEDS
CHROME OR PAINT-READY FINISH



**1X GRILLE ADAPTER
HARNESS**



**6X EMBLEM
DAMPENERS**



**1X 15A
REPLACEMENT FUSE**



**1X OEM LED ADAPTER
HARNESS
*NOT USED***



**1X DRL FUSE TAP
*NOT USED***



2X BOLT COVERS

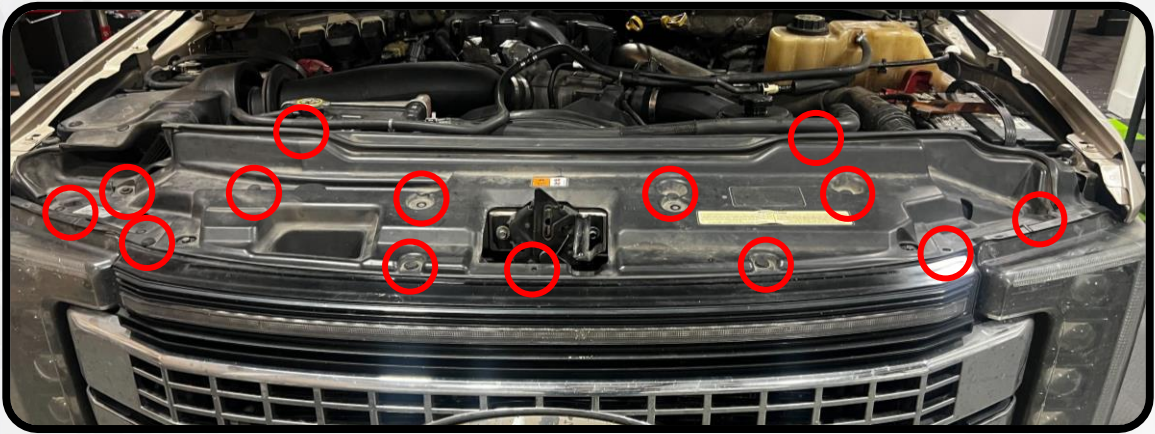
REQUIRED TOOLS

- RATCHET
- 10MM SOCKET
- 13MM SOCKET
- PRY TOOL
- SPLIT TRIM REMOVAL TOOL
- PHILLIPS HEAD SCREWDRIVER

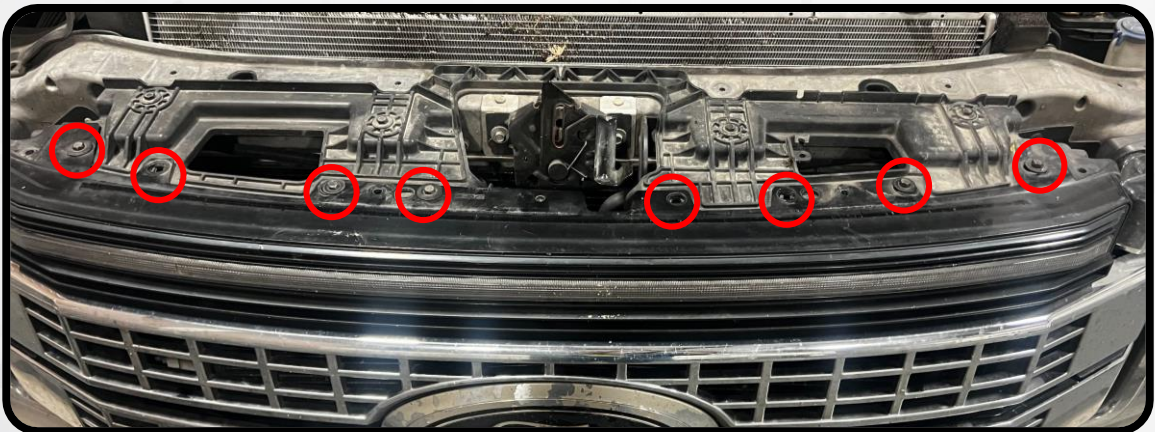


DISASSEMBLY

1. REMOVE THE FOURTEEN PLASTIC PUSH-CLIPS HOLDING ON THE RADIATOR COVER. DO THIS BY PRYING UP ON THE TOP PART OF THE CLIP, THEN PRY THE LOWER PORTION UP OUT OF THE HOLE



2. REMOVE THE RADIATOR COVER AND SET IT ASIDE
3. REMOVE THE EIGHT BOLTS ALONG THE TOP OF THE GRILLE

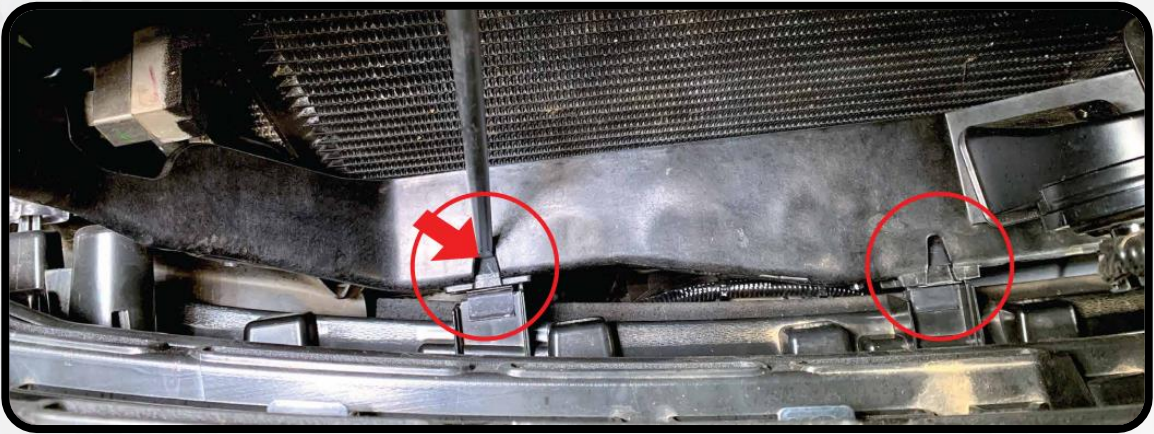


4. WITH THE BOLTS REMOVED, GENTLY, BUT DELIBERATELY, PULL THE TOP OF THE GRILLE FORWARD TO RELEASE THE CLIPS THAT HOLD IT, AND TILT IT FORWARD

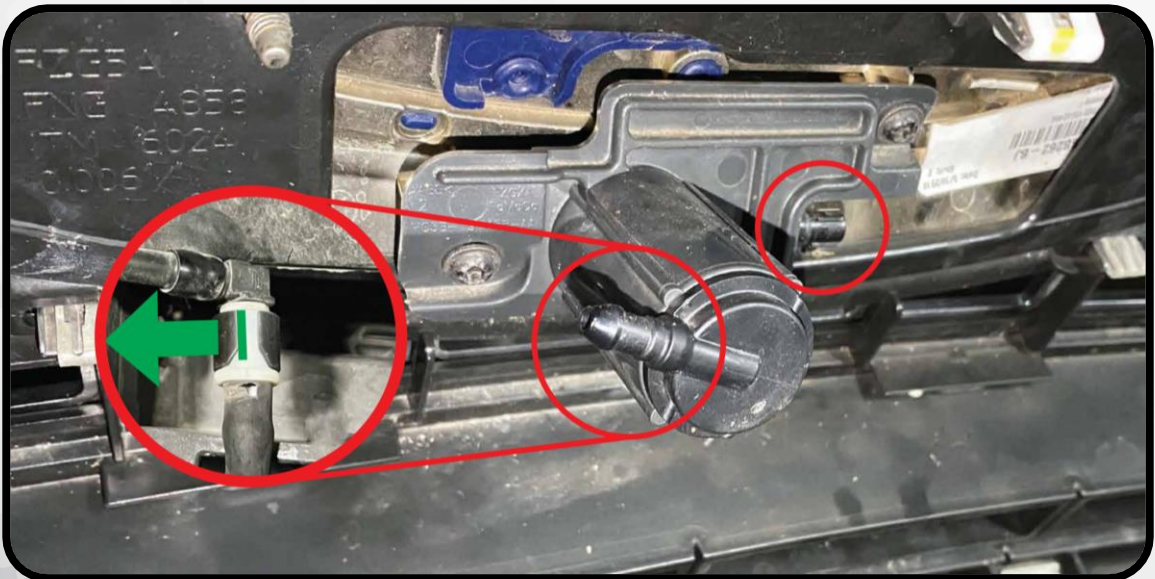


DISASSEMBLY

5. WITH THE GRILLE TILTED FORWARD, GET A PRY TOOL AND PRESS DOWN ON THE FOUR METAL CLIPS (TWO PER SIDE) TO RELEASE THEM. AFTER RELEASING EACH CLIP, PULL THE GRILLE AWAY FROM THE TRUCK WITH LIGHT PRESSURE TO PREVENT THE CLIPS FOR LOCKING BACK INTO PLACE



6. IF YOU HAVE A FRONT CAMERA, UNPLUG THE CONNECTOR ON THE CAMERA BY PRESSING THE RELEASE TAB AND SLIDING THE CONNECTOR OFF. THEN DISCONNECT THE WASHER FLUID HOSE FITTING BY PRYING UP ON ONE SIDE OF THE LOCKING COLLAR, THEN SLIDE THE HOSE FITTING OFF (A FEW DROPS OF WASHER FLUID MAY COME OUT). IF YOU DO NOT HAVE A FRONT CAMERA, SKIP THIS STEP

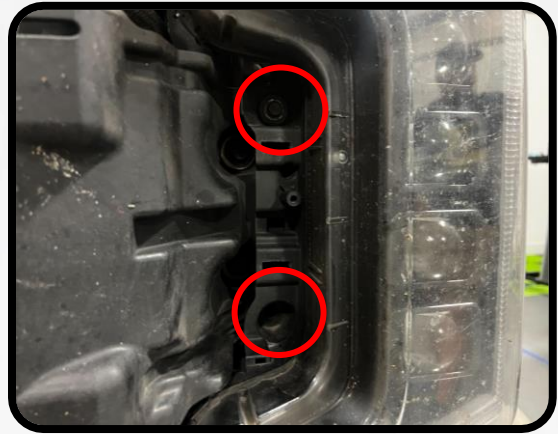


7. PULL THE GRILLE FORWARD AND REMOVE IT FROM THE TRUCK. SET IT ASIDE FOR NOW



DISASSEMBLY

8. REMOVE THE ONE 10MM BOLT FROM THE TOP OF THE HEADLIGHT, AND THE TWO 10MM BOLTS FROM THE FRONT OF THE HEADLIGHT (THE TWO FROM THE FRONT OF THE LIGHT WILL NOT BE REUSED)



9. REMOVE THE ONE 10MM BOLT ON THE LOWER CORNER OF THE HEADLIGHT. THIS BOLT IS LOCATED BEHIND THE RUBBER SEAL IN BETWEEN THE FENDER AND BUMPER

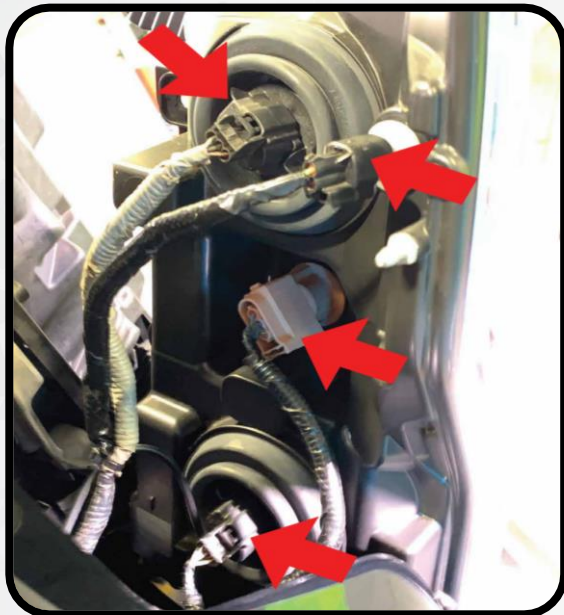


10. PULL THE HEADLIGHT FORWARD TO RELEASE IT FROM THE TRUCK. THESE HEADLIGHTS ARE LARGE, AND THE HEADLIGHT CAVITY IS TIGHT, SO IT WILL NEED TO BE TWISTED/ROTATED AS IT COMES FORWARD

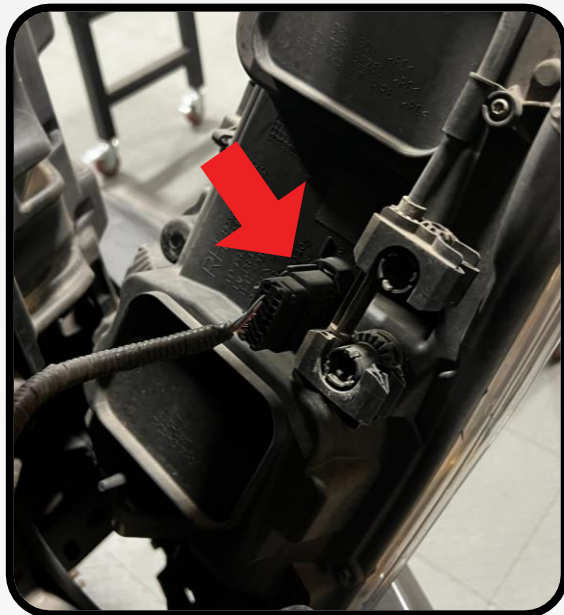


DISASSEMBLY

- LEAN THE HEADLIGHT FORWARD SO THAT YOU CAN ACCESS THE HEADLIGHT CONNECTORS. FOR HALOGEN TRUCKS, UNPLUG EACH OF THESE CONNECTIONS. LED TRUCKS WILL HAVE ONE SINGLE CONNECTOR

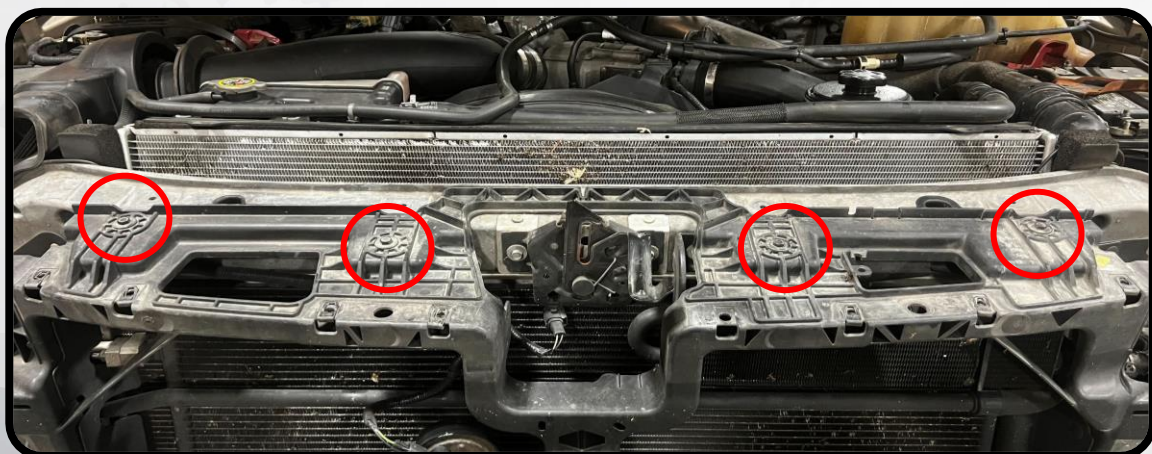


HALOGEN HEADLIGHT



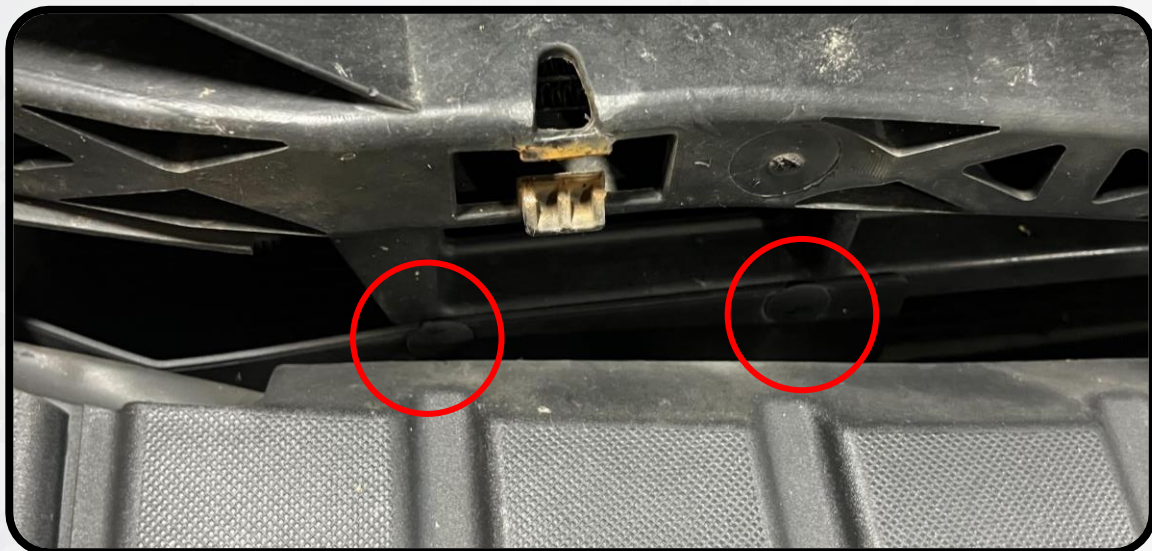
LED HEADLIGHT

- REMOVE THE HEADLIGHT FROM THE TRUCK AND SET IT ASIDE
- REPEAT STEPS 8 THROUGH 12 ON THE OPPOSITE HEADLIGHT
- REMOVE THE FOUR 10MM BOLTS FROM THE TOP OF THE GRILLE SUPPORT BRACKET

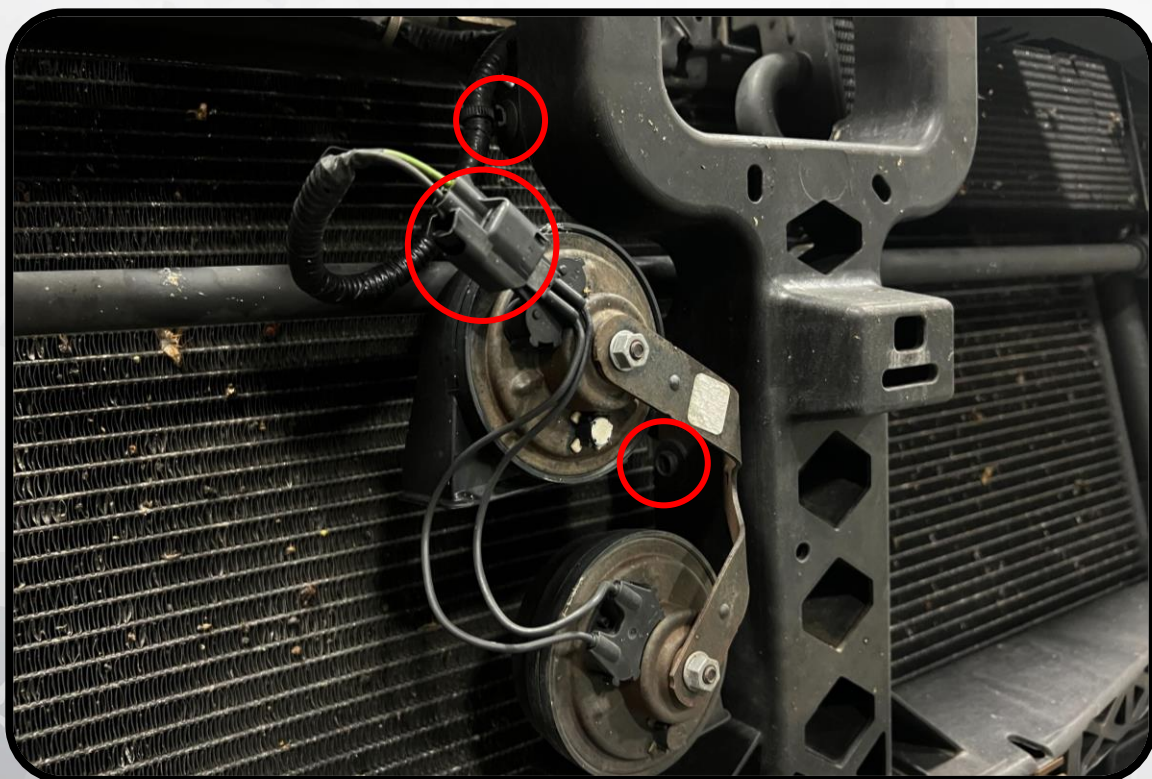


DISASSEMBLY

15. REMOVE THE FOUR (TWO PER SIDE) PLASTIC PUSH CLIPS FROM THE BOTTOM OF THE GRILLE SUPPORT BY PRYING THEM OUT WITH A SPLIT TRIM REMOVAL TOOL

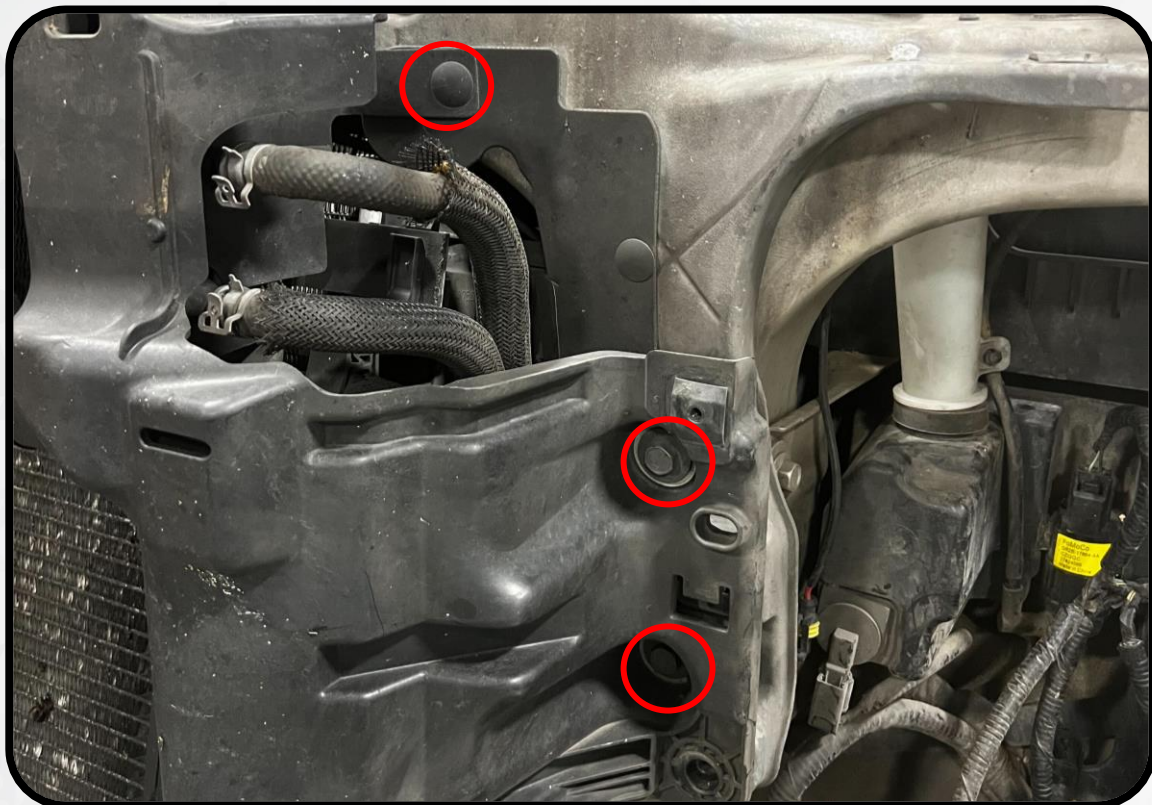


16. UNPLUG THE HORN CONNECTOR. REMOVE THE HORN HARNESS CLIP FROM THE GRILLE SUPPORT AND REMOVE THE 10MM BOLT HOLDING ON THE HORN BRACKET. SET THE HORN ASIDE FOR NOW.

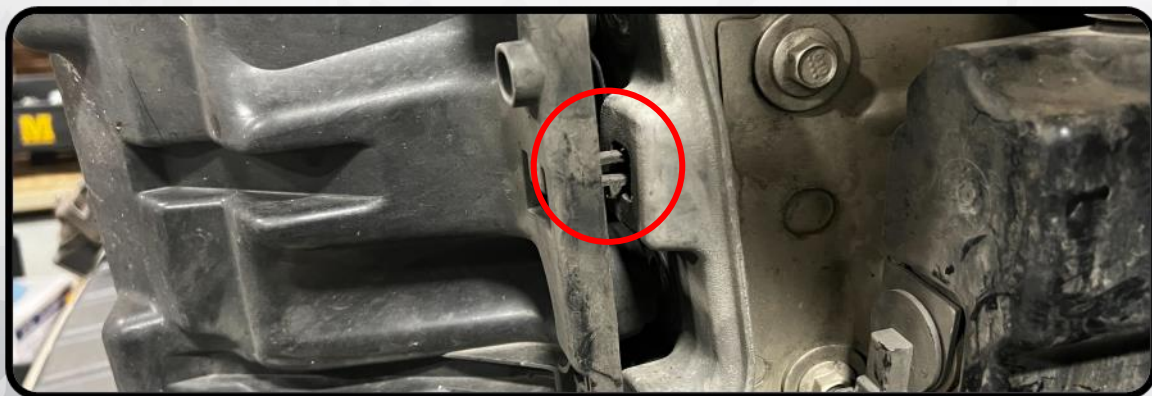


DISASSEMBLY

17. REMOVE THE TWO (ONE PER SIDE) PLASTIC PUSH CLIPS, AND FOUR (TWO PER SIDE) 13MM BOLTS FROM THE GRILLE SUPPORT

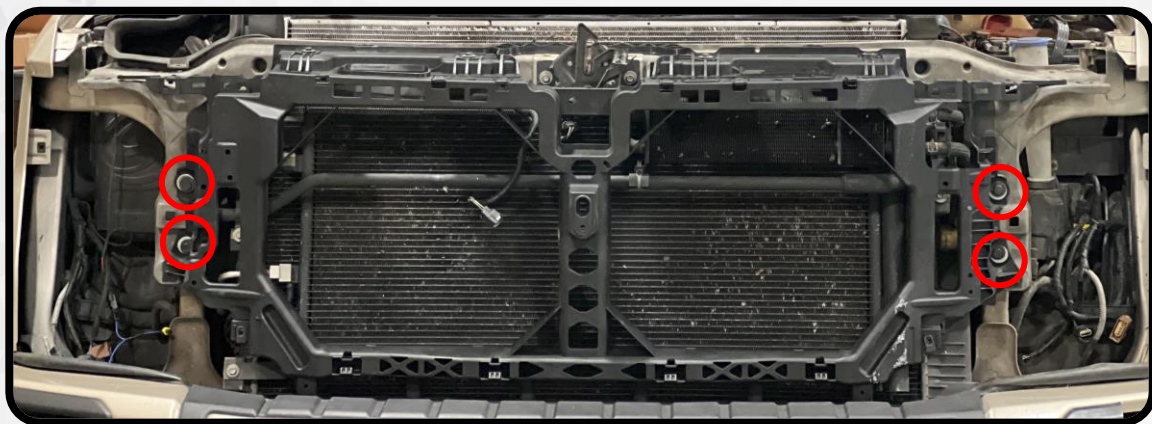


18. PULL FORWARD ON THE GRILLE SUPPORT, RELEASING THE CLIP ON EACH SIDE. LIFT THE SUPPORT UP AND FORWARD, OFF THE TRUCK

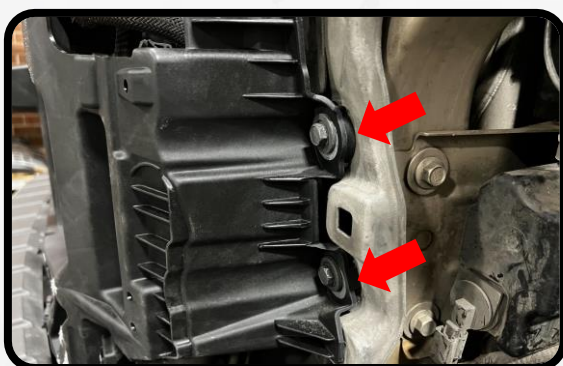
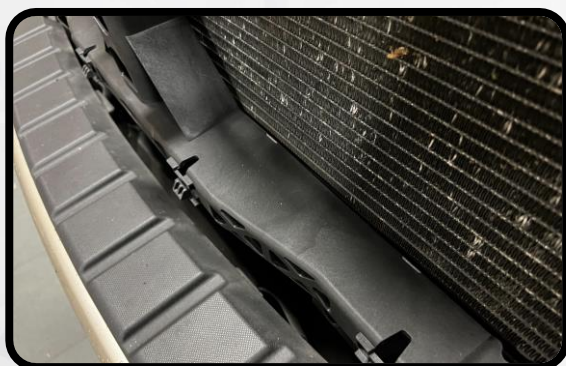


GRILLE SUPPORT INSTALLATION

19. LIFT THE NEW GRILLE SUPPORT ONTO THE TRUCK IN PLACE OF THE ONE YOU JUST REMOVED. REINSTALL THE FOUR 13MM BOLTS TO SECURE IT INTO POSITION.

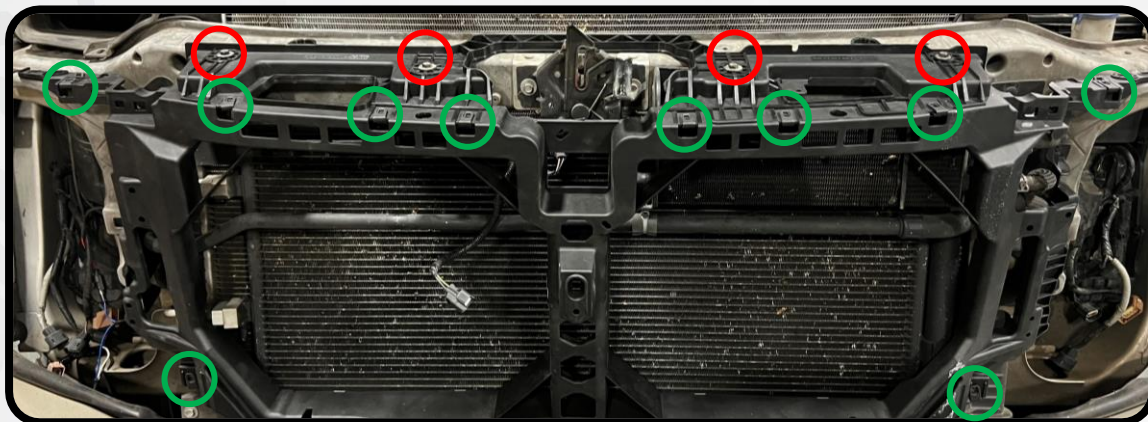


20. THE GRILLE BRACKET SHOULD FIT TIGHTLY AGAINST THE FRONT OF THE TRUCK, WITH A SMALL GAP BETWEEN THE BRACKET AND THE A/C CONDENSER. IF THE BRACKET IS CONTACTING THE CONDENSER, ADD THE SUPPLIED SPACERS IN BETWEEN THE BRACKET AND THE RADIATOR SUPPORT TO PREVENT CONTACT



GRILLE SUPPORT INSTALLATION

21. REINSTALL THE FOUR 10MM BOLTS ALONG THE TOP OF THE GRILLE SUPPORT BRACKET, SLOT THE TEN PROVIDED C-CLIPS INTO THE POSITIONS SHOWN IN GREEN

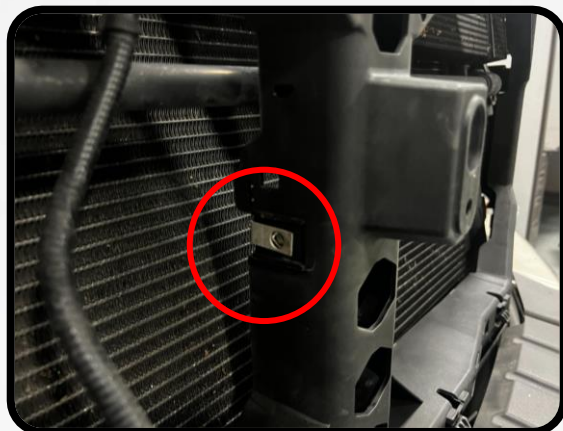


22. RESECURE THE FOUR (TWO PER SIDE) PLASTIC CLIPS TO THE BOTTOM OF THE NEW GRILLE SUPPORT BRACKET, AND THE ONE UPPER PLASTIC CLIP TO THE RADIATOR SUPPORT.

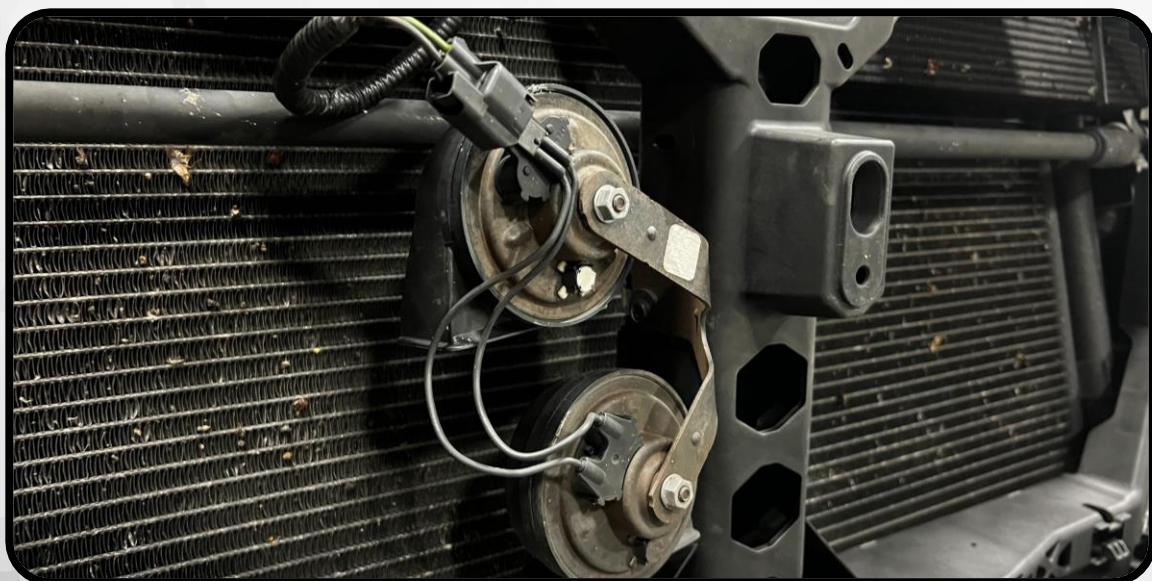


GRILLE SUPPORT INSTALLATION

23. REMOVE THE HORN C-CLIP FROM THE ORIGINAL GRILLE SUPPORT, AND TRANSFER IT OVER TO THE CORRESPONDING POSITION ON THE NEW GRILLE SUPPORT

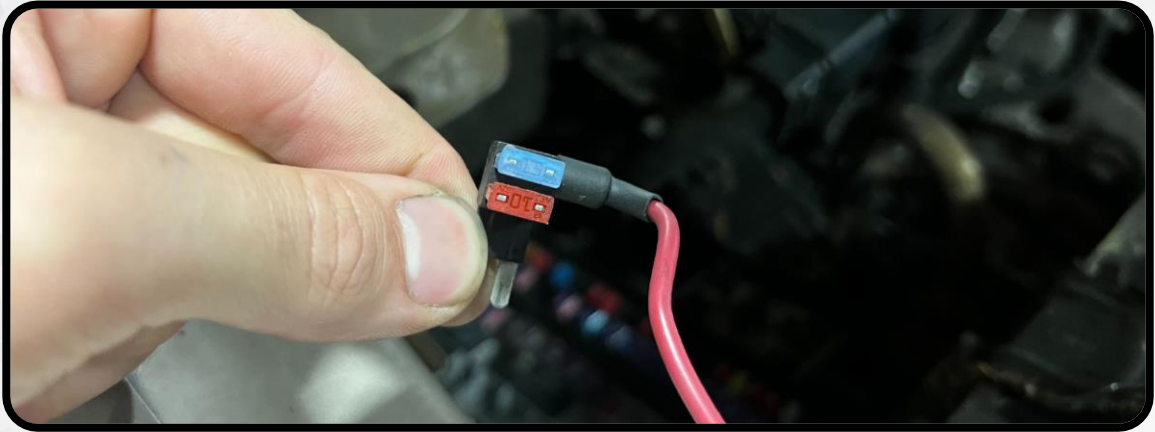


24. REINSTALL THE HORN USING THE ORIGINAL 10MM BOLT AND RECONNECT THE WIRING. CLIP THE FRONT CAMERA WIRING AND WASHER HOSE BACK INTO POSITION AS WELL, IF EQUIPPED



HEADLIGHT INSTALLATION

25. IF YOU BOUGHT MORIMOTO XB LED HEADLIGHTS (SKU: LF508), LOCATE THE FUSE TAP HARNESS THAT CAME IN THE BOX, THEN REMOVE THE UPPER 10A FUSE FROM SLOT #35, AND REPLACE IT WITH THE 15A FUSE THAT COMES WITH THE MORIMOTO XBG LED GRILLE (XBG10, XBG11, XBG12, OR XBG13)



26. LOCATE THE FUSE BOX LOCATED UNDER THE HOOD ON THE PASSENGER SIDE BY THE FIREWALL. REMOVE THE 10A FUSE FROM SLOT #35, AND PLUG THE FUSE TAP INTO THAT SLOT. IF FUSE SLOT #35 IS NOT POPULATED ON YOUR TRUCK, USE THE #34 SLOT NEXT TO IT. ROUTE THE SHORT SIDE OF THE HARNESS FORWARD TO THE PASSENGER SIDE HEADLIGHT AREA, AND THEN THE LONG SIDE ACROSS THE RADIATOR SUPPORT TO THE DRIVER SIDE HEADLIGHT AREA

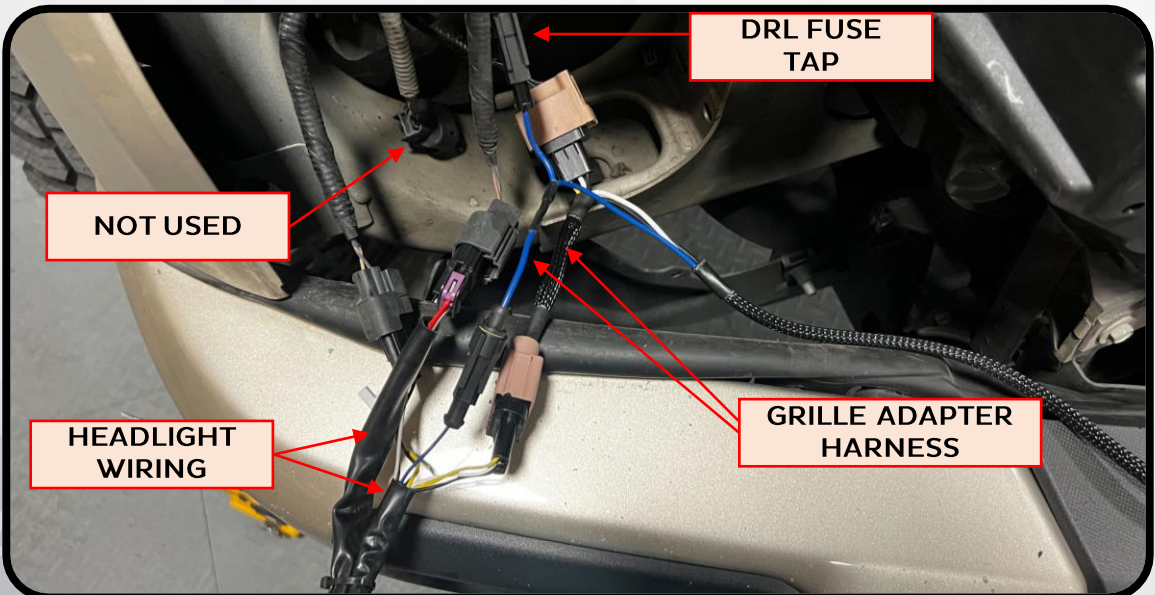


HEADLIGHT INSTALLATION

27. IF YOUR TRUCK WAS ORIGINALLY EQUIPPED WITH FACTORY LED HEADLIGHTS, TAKE THE LED ADAPTER HARNESS THAT WAS INCLUDED WITH THE GRILLE SUPPORT AND CONNECT IT TO THE TRUCK'S HEADLIGHT CONNECTOR. IF YOUR TRUCK WAS ORIGINALLY EQUIPPED WITH HALOGEN HEADLIGHTS, SKIP THIS STEP

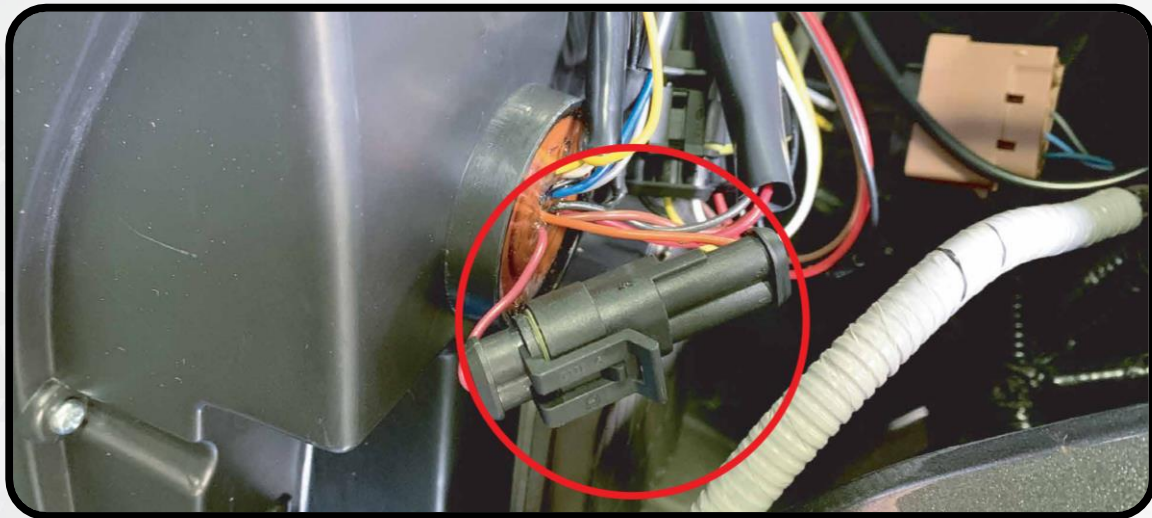


28. TAKE THE GRILLE ADAPTER HARNESS AND MATCH THE TWO MALE CONNECTORS TO THE VEHICLE'S TURN SIGNAL CONNECTOR, AND DRL HARNESS CONNECTOR. THEN TAKE THE HEADLIGHT AND MATCH THE CONNECTORS ON THE LIGHT TO THE REMAINING LOOSE CONNECTORS ON THE VEHICLE/GRILLE HARNESS. FOR HALOGEN TRUCKS, ONE LOW/HIGH BEAM CONNECTOR WILL REMAIN UNUSED

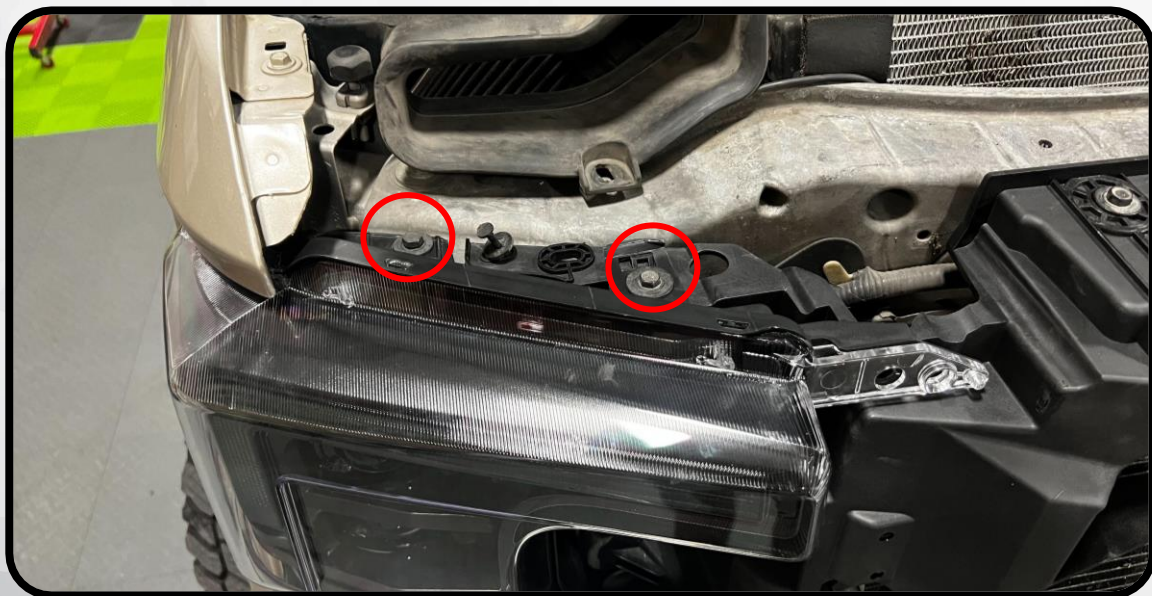


HEADLIGHT INSTALLATION

29. TO TOGGLE BETWEEN STANDARD AND SEQUENTIAL TURN SIGNAL, USE THE CONNECTOR SHOWN BELOW. LEAVE IT CONNECTED FOR SEQUENTIAL, OR DISCONNECTED FOR STANDARD BLINK



30. SLIDE THE HEADLIGHT ONTO THE VEHICLE, ENSURING THAT NONE OF THE WIRING IS PINCHED IN THE PROCESS. REINSTALL THE UPPER HEADLIGHT BOLT INTO THE HOLE CLOSEST TO THE FENDER, AND USE ONE OF THE ORIGINAL UPPER GRILLE MOUNTING BOLTS IN THE HOLE FURTHER FROM THE FENDER, REINSTALL THE HEADLIGHT BOLT IN BETWEEN THE FENDER AND BUMPER AS WELL



GRILLE INSTALLATION

31. REPEAT THESE STEPS ON THE DRIVER SIDE, EXCLUDING THE GRILLE ADAPTER HARNESS
32. GET INTO THE TRUCK AND CONFIRM THAT ALL HEADLIGHT FUNCTIONS ARE WORKING PROPERLY
33. LAY YOUR OEM GRILLE FACE DOWN ON A SOFT SURFACE. REMOVE THE THREE 10MM NOTS ON THE BACK OF THE EMBLEM THAT SECURE IT TO THE GRILLE

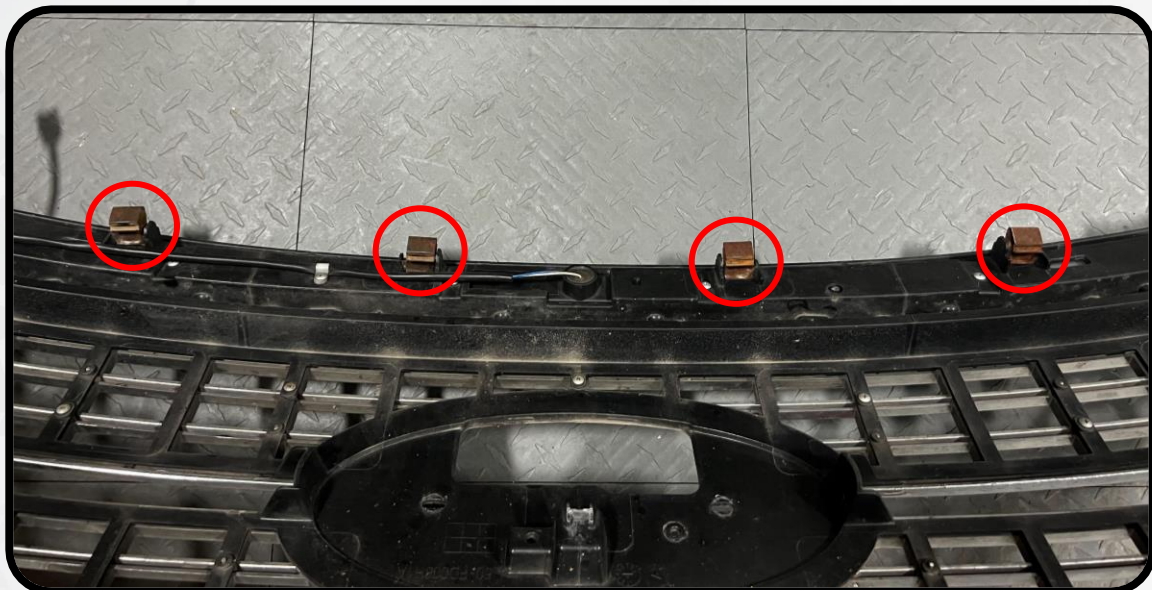


34. LOCATE THE INCLUDED EMBLEM DAMPENERS. THE THINNER ONES ARE FOR USE WITH OEM EMBLEMS, AND THE THICKER ONES ARE FOR AFTERMARKETS EMBLEMS. INSTALL THE APPROPRIATE SPACERS ONTO THE THREE EMBLEM STUDS

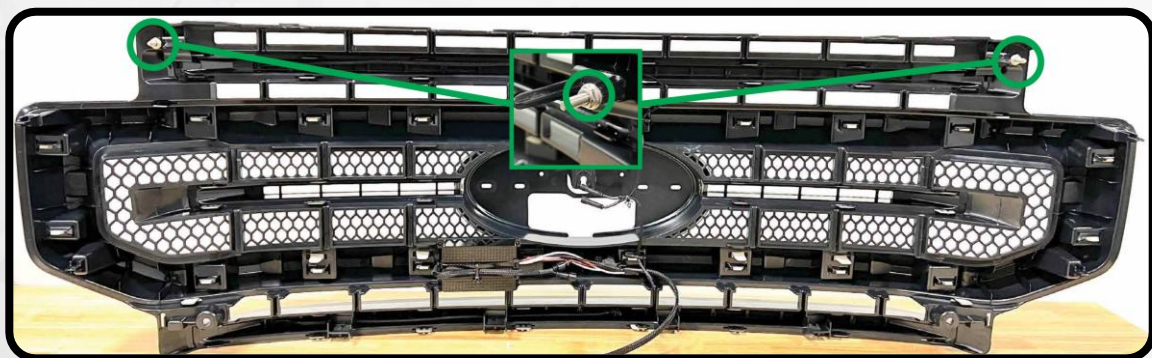


GRILLE INSTALLATION

35. LOCATE THE FOUR METAL CLIPS ALONG THE BOTTOM OF THE OEM GRILLE AND REMOVE THEM



36. TRANSFER THE EMBLEM AND METAL CLIPS TO THE NEW XBG GRILLE. HAND TIGHTEN THE EMBLEM NUTS ONLY
37. REMOVE THE TWO 10MM NUTS FROM THE TOP OF THE XBG GRILLE AND SET THEM ASIDE FOR NOW



GRILLE INSTALLATION

38. PLACE THE XBG GRILLE IN FRONT OF THE VEHICLE AND CONNECT THE GRILLE WIRING TO THE GRILLE ADAPTER HARNESS YOU INSTALLED ON THE PASSENGER SIDE

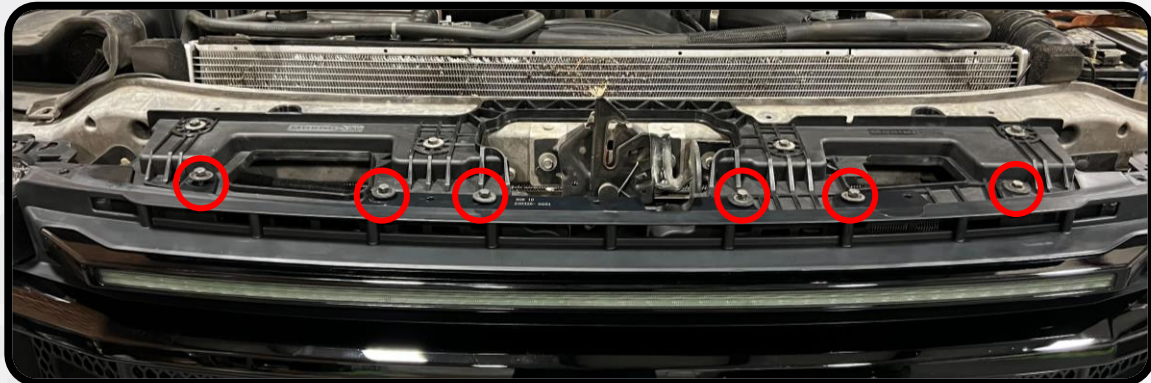


39. LIFT THE GRILLE UP ONTO THE VEHICLE. RECONNECT YOUR CAMERA AND WASHER, IF EQUIPPED
40. ALIGN IT ON THE VEHICLE AND PRESS ON IT SO THAT THE CLIPS ON THE BACK OF THE GRILLE SNAP INTO PLACE. GET IN THE VEHICLE AGAIN AND CONFIRM THAT THE GRILLE IS FUNCTIONING PROPERLY
41. INSTALL THE TWO NUTS (ONE PER SIDE) YOU JUST REMOVED FROM THE GRILLE BACK ONTO THEIR STUDS, SECURING THE GRILLE TO THE HEADLIGHT



GRILLE INSTALLATION

42. LOOSELY REINSTALL THE SIX REMAINING 10MM UPPER GRILLE BOLTS INTO YOUR NEW GRILLE



43. INSTALL THE TWO (ONE PER SIDE) PROVIDED 10MM GRILLE/HEADLIGHT BOLTS THROUGH THE GRILLE AND HEADLIGHT IN THE HOLE LOCATED AT THE BOTTOM CORNER OF THE HEADLIGHT. TIGHTEN THEM IN, AND THEN TIGHTEN THE 6 BOLTS ACROSS THE TOP OF THE GRILLE FROM STEP 43



44. INSTALL THE TWO (ONE PER SIDE) PROVIDED BOLT COVERS OVER TOP OF THESE BOLTS

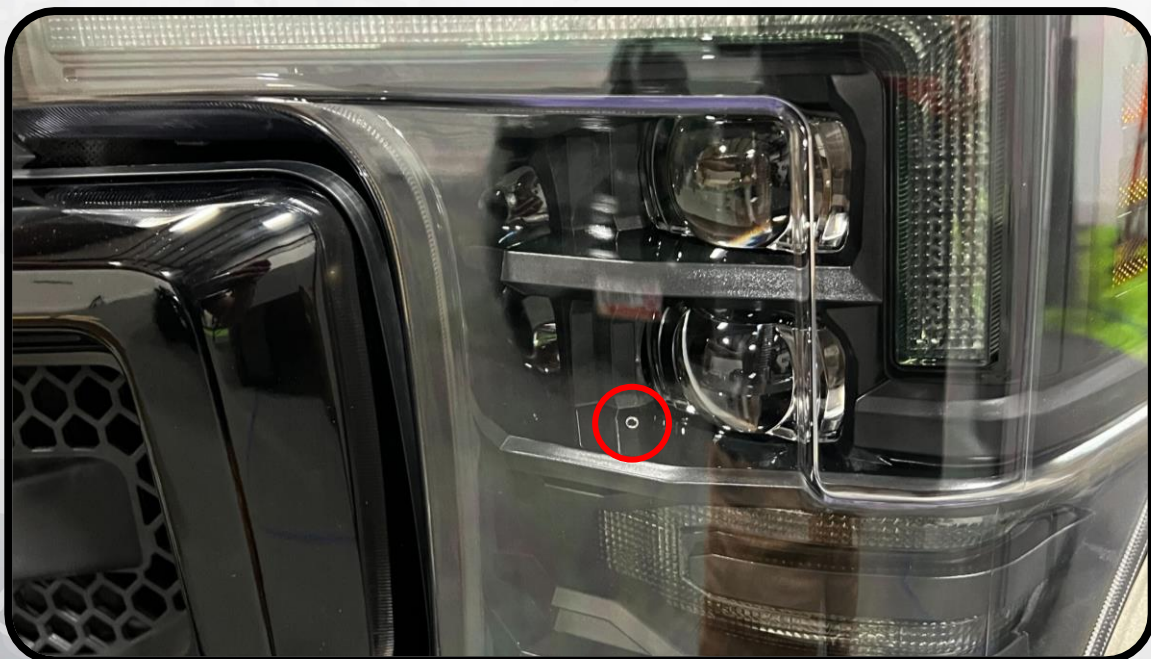


HEADLIGHT AIMING INSTRUCTIONS

45. REINSTALL THE RADIATOR COVER THE SAME WAY YOU REMOVED IT, SECURING THE FOURTEEN PLASTIC PUSH CLIPS
46. USE THE ADJUSTER SHOWN BELOW AND A PHILLIPS HEAD SCREWDRIVER TO ADJUST THE VERTICAL AIM OF THE HEADLIGHTS.



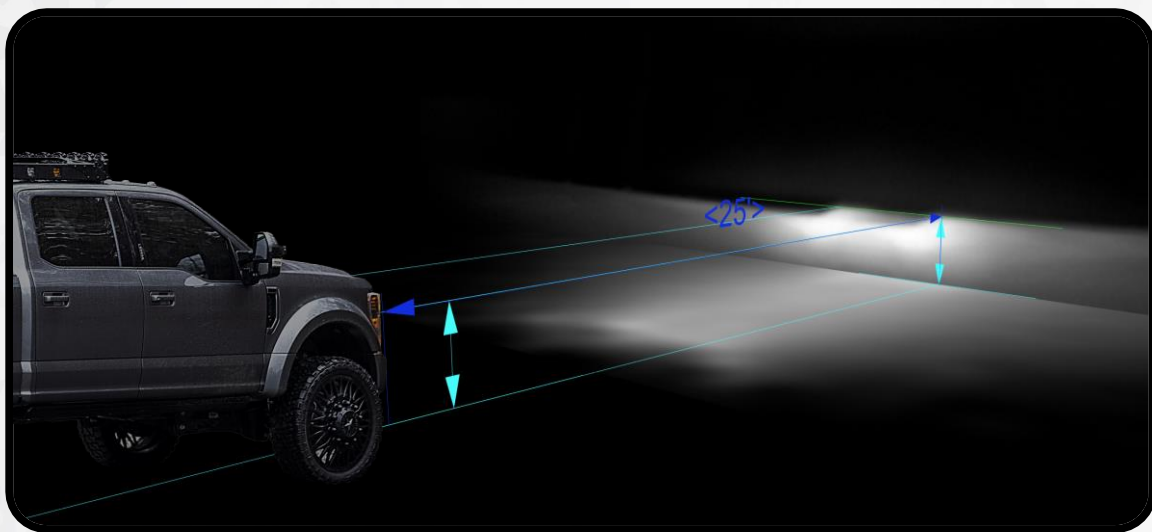
47. WITH THE VEHICLE PARKED ON LEVEL GROUND, 25' FROM A WALL, MEASURE THE DISTANCE FROM THE GROUND TO THE OPTICAL CENTER OF THE HEADLIGHT (MARKED BY THE MARKER SHOWN ON THE HEADLIGHT BELOW)



HEADLIGHT AIMING INSTRUCTIONS

48. FOLLOW THE INSTRUCTIONS BELOW TO PROPERLY ALIGN YOUR HEADLIGHTS' LOW BEAM CUTOFF (THE UPPER HORIZONTAL EDGE OF THE LOW BEAM)

- IF THE DISTANCE FROM THE GROUND TO THE OPTICAL CENTER IS LESS THAN 34.5", ADJUST THE TOP OF THE HEADLIGHT CUTOFF TO THE SAME HEIGHT AS THE HEADLIGHT MEASUREMENT YOU TOOK
- IF THE HEIGHT IS BETWEEN 35"-39", ADJUST THE CUTOFF TO 2" BELOW YOUR HEADLIGHT MEASUREMENT
- IF THE HEIGHT IS GREATER THAN 39.5", ADJUST THE CUTOFF TO 3" BELOW YOUR HEADLIGHT MEASUREMENT



- ENJOY YOUR FACELIFTED GRILLE AND HEADLIGHTS! -

