

92RCH550000

ROUGH COUNTRY

SUSPENSION SYSTEMS®

21-Up Ford Bronco LED Headlight Kit

Thank you for choosing Rough Country for all your vehicle needs.

Please read instructions before beginning installation. Check the kit hardware against the kit contents shown below. Be sure you have all needed parts and know where they go.

If question exist, please call us @1-800-222-7023. We will be happy to answer any questions concerning this product.

Check all fasteners for proper torque. Check to ensure for adequate clearance between all components.

Periodically check all hardware for tightness.

KIT CONTENTS:

Driver Side Headlight Assembly x1
 Driver Side Marker Light x1
 Pass Side Headlight Assembly x1
 Pass Side Marker Light x1

TOOLS NEEDED:

10mm Socket / Wrench
 Clip Puller
 Philips screwdriver

HARDWARE INCLUDED:

Phillips Screws x4



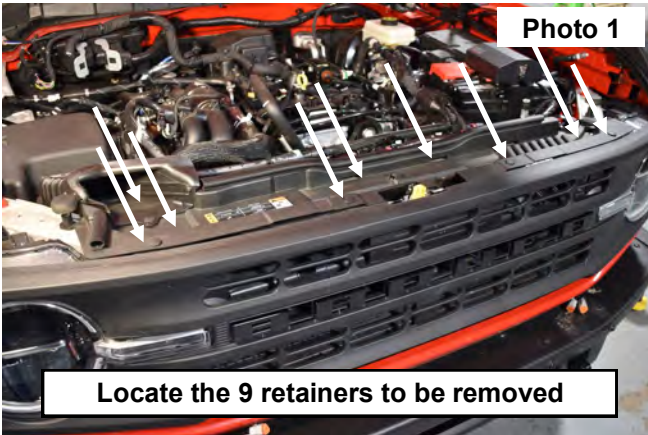
Torque Specs:

Size	Grade 5	Grade 8	Size	Class 8.8	Class 10.9
5/16"	15 ft/lbs	20ft/lbs	6MM	5ft/lbs	9ft/lbs
3/8"	30 ft/lbs	35ft/lbs	8MM	18ft/lbs	23ft/lbs
7/16"	45 ft/lbs	60ft/lbs	10MM	32ft/lbs	45ft/lbs
1/2"	65 ft/lbs	90ft/lbs	12MM	55ft/lbs	75ft/lbs
9/16"	95 ft/lbs	130ft/lbs	14MM	85ft/lbs	120ft/lbs
5/8"	135ft/lbs	175ft/lbs	16MM	130ft/lbs	165ft/lbs
3/4"	185ft/lbs	280ft/lbs	18MM	170ft/lbs	240ft/lbs

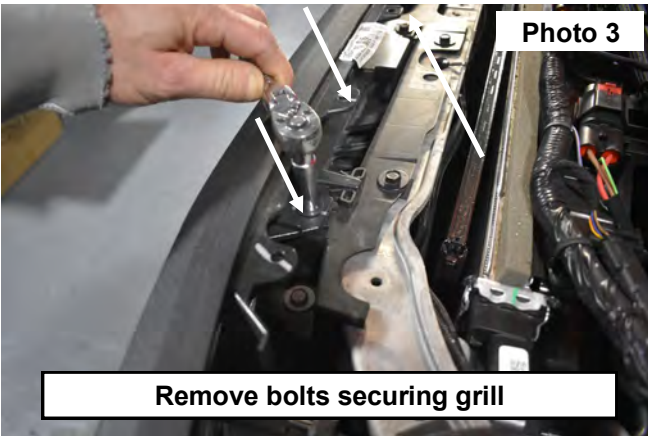


INSTALLATION INSTRUCTIONS

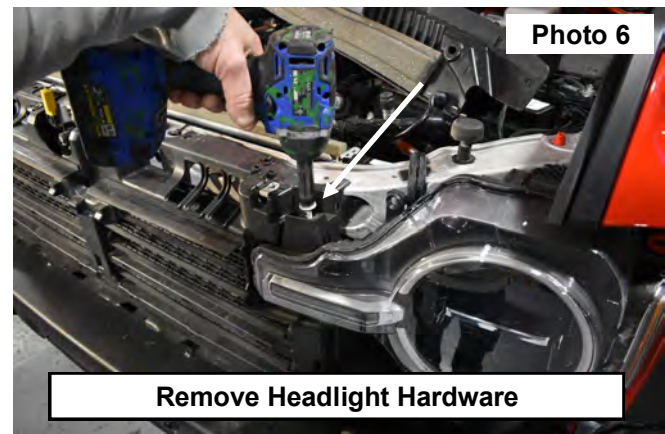
1. Raise the hood
2. Using a clip puller remove the qty 9 press in retainers. Retain the stock hardware for reuse. **See Photo 1 & 2.**

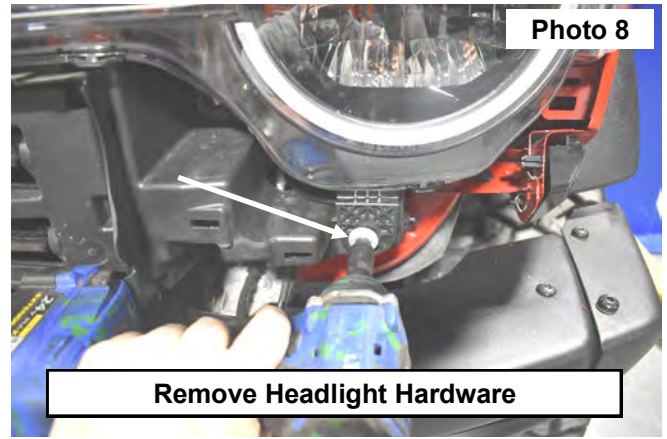
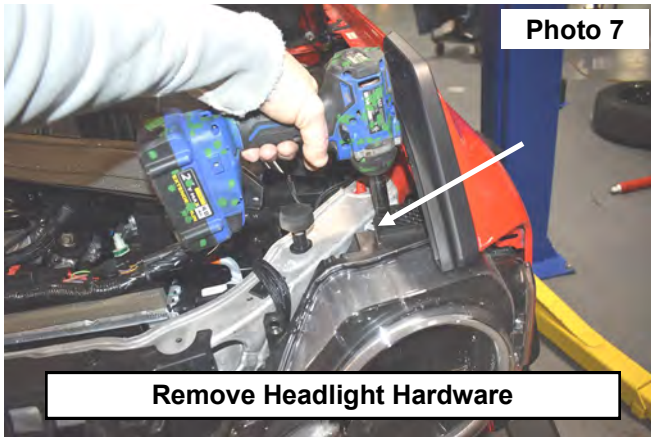


3. Using a 10mm socket, remove the 4 retainers. Retain the stock hardware for reuse. **See Photo 3.**
4. Pull the grill to release the clips and remove the grill. Set the grill aside. **See Photo 4.**

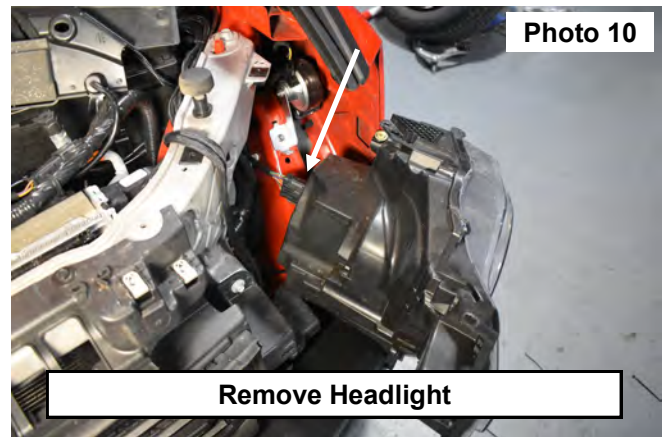
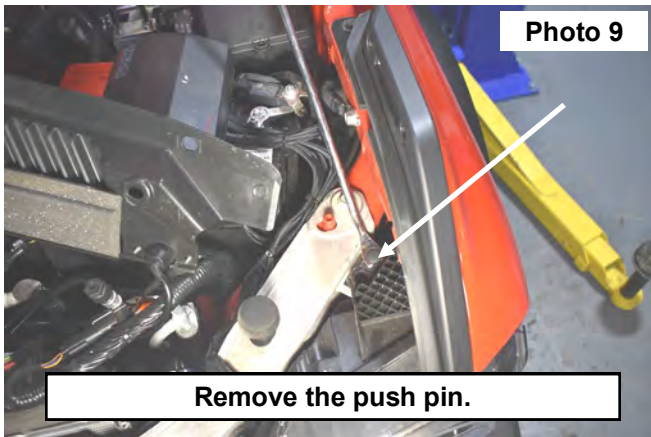


5. Remove the trim below the grill as well by pulling the trim piece and releasing the clips on the sides. **See Photo 5.** Set the trim piece to the side.
6. Remove the 3 bolts holding the headlight in place using a 10mm socket. **See Photo 6, 7 & 8.**

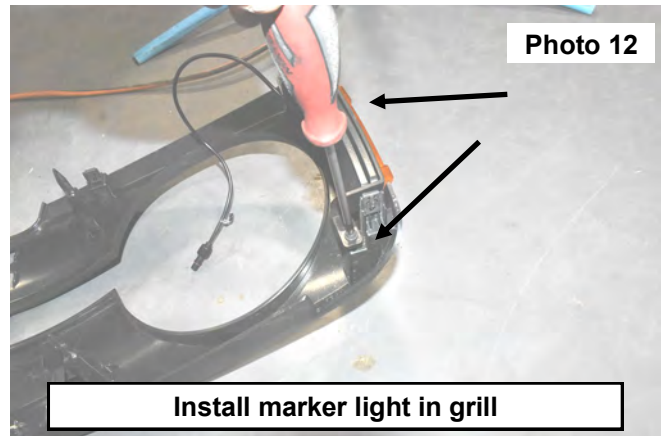
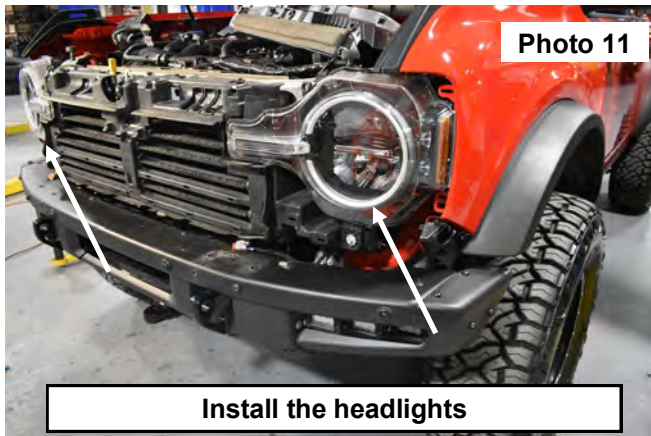




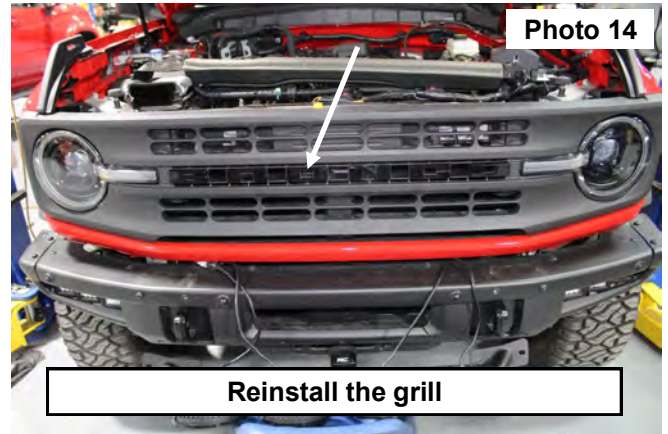
7. Using the clip puller, remove the push pin from the headlight. Retain the hardware for reuse. **See Photo 9.**
8. Release the wiring clips and remove the headlight from the vehicle. **See Photo 10.**



9. Install the new headlights into the factory driver and passenger location using the factory hardware. Tighten using a 10mm socket. **See Photo 11.**
10. Install the side marker light to the grill with the supplied screws and using a Phillips screwdriver. **See Photo 12**



11. Re-install the lower grill trim by pressing to engage the clips.
12. Locate the wire on the headlight assembly and connect the marker light to the wire. Hand tighten the coupler. **See Photo 13.**
13. Reinstall the grill using the factory hardware. **See Photo 14.**



14. Reinstall the upper cover using the factory hardware. **See Photo 15.**



By purchasing any item sold by Rough Country, LLC, the buyer expressly warrants that he/she is in compliance with all applicable, State, and Local laws and regulations regarding the purchase, ownership, and use of the item. It shall be the buyers responsibility to comply with all Federal, State and Local laws governing the sales of any items listed, illustrated or sold. The buyer expressly agrees to indemnify and hold harmless Rough Country, LLC for all claims resulting directly or indirectly from the purchase, ownership, or use of the items.

