

**START HERE**

Cognito 3" Standard Leveling Lift Kit for 2020-2024 GM 2500/3500 2WD/4WD Trucks

INSTALL SUMMARY SHEET:

Cognito 3" Standard Leveling Lift Kit for 2020-2024 GM 2500/3500 2WD/4WD Trucks
SKU: 110-91247

PARTS LIST FOR SKU: 110-90869

| QTY. | PART # | DESCRIPTION |
|------|-----------|---|
| 1 | 110-90771 | 2020 GM 8-Lug Lift Torsion Keyway |
| 1 | 110-91244 | 2020 Cognito Press-In Ball Joint Tubular Upper Control Arms |
| 1 | 110-91031 | Block and U-Bolt Kit |
| 1 | HP9271 | 3/4" Front Shock Extender Kit |

PARTS LIST FOR SKU: HP9271

| QTY. | PART # | DESCRIPTION |
|------|----------------|---|
| 2 | 2733 | 3/4" Shock Spacer Front Upper 2020 GM 8-Lug |
| 4 | HARDWARE-15213 | 1/2"-13 X 2-1/2" Grade 8 Yellow Zinc Hex Head Cap Screw |
| 8 | HARDWARE-33086 | 1/2" SAE Zinc Flat Washer |
| 4 | HARDWARE-37268 | 1/2"-13 Grade C Zinc Top Lock Nut |

**WARNING**

Please read this entire instruction sheet before beginning installation. Proper installation of these components requires a qualified mechanic. Always wear safety glasses when using power tools and take appropriate precautions when working under a vehicle. If these instructions are not properly followed you may jeopardize your, and your passenger's safety, and severe frame, suspension or tire damage may also result from improper installation.

PARTS LIST FOR SKU: 110-91031

| QTY. | PART # | DESCRIPTION |
|------|---------------|--------------------------|
| 2 | BLOCK-110010S | 1" Flat Lift Block 8-Lug |
| 4 | UB-.75X3.1X16 | 3/4" X 3" X 16" U-Bolt |

INTRODUCTION

Thank you for purchasing the Cognito 3" Standard Leveling Lift Kit. We've bundled everything you need in a leveling lift kit for your Silverado/Sierra 2500/3500 2WD/4WD with high quality Cognito components. There's no guesswork. The Cognito Standard upper control arms are built with a modified ball joint angle to eliminate travel limitations of the ball joint in lifted applications. Upgrade your stock upper control arms with Cognito Standard Control Arms for better performance, style and function. Ample droop travel is required for good ride quality and all suspension components to last and work properly. The allowable droop travel is also improved with the design of these arms. Cognito Torsion Bar Keys levels the front with the rear of the truck. Their forged construction makes them practically indestructible and they bolt in for easy installation. The Cognito 1-inch Block and U-Bolt Kit includes 1-inch tall powder coated semi-gloss black cast steel blocks and heavy-duty zinc plated U-bolts. Made in the USA.

TECHNICAL INFORMATION

- Proper vehicle lifting equipment is required. Always make sure the vehicle is properly supported and **never work under an unsupported vehicle.**
- Check the parts and hardware packages against the parts list in each instruction set to assure that your kit is complete.
- Be sure to read though all install instructs include with this kit prior to attempting instillation and heed all warnings, failure to comply with all warnings and requirements can lead to an accident and serious injury.

This Kit Install Summary will guide you through the **necessary order of steps** to install each of the individual components that comprise this kit in the required sequence to safely complete full and proper installation.

The proper installation of this combination of products is dictated by the necessary sequence in which each component must be installed to avoid access, interference or clearance issues that will result in unnecessary disassembly and reassembly and potential safety hazards.

This document will guide you through the sequence of operations, which includes preparatory work and the prescribed order for installing components – by referring you to the individual instructions packaged with each Cognito component for detail on how each kit component is properly installed.

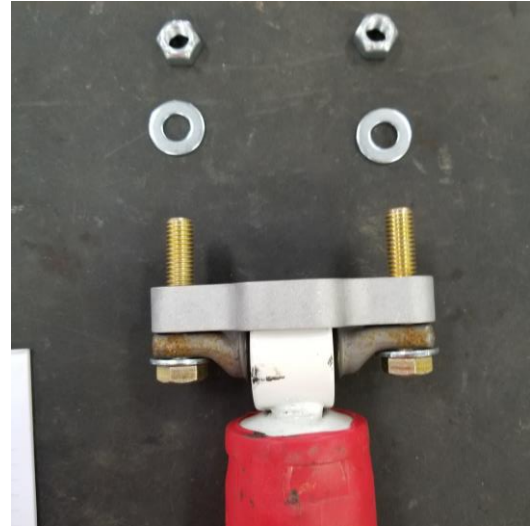
YOU MUST FOLLOW THESE STEPS IN SEQUENTIAL ORDER FOR PROPER INSTALLATION OF THIS KIT.

REVIEW TECHNICAL NOTES AND REQUIREMENTS OF THE INDIVIDUAL INSTALLATION INSTRUCTION SHEETS INCLUDED WITH THIS KIT BEFORE BEGINNING.

INSTALLATION

1. Begin by locating the 3 instruction sheets **7024**, **7037**, and **7440** included with this kit. **All** will be needed to complete this install. If instructions are missing or damaged, contact Cognito Motorsports for where to find replacements.
2. Start with instruction set **7024**. Check to make sure all parts on the parts list are accounted for. Work through these instructions completely to install the Cognito Rear Lift Block and U-Bolt Kit.
3. Refer to instruction set **7037**. Check to make sure all parts on the parts list are accounted for. Work through until instructed to load the Cognito torsion keys, stop at this point and not load the torsion keys.
4. Refer to instruction set **7440** to remove the factory upper control arms. Check to make sure all parts on the parts list are accounted for. Work through until instructed to install the Cognito control arms onto the truck, stop at this point and do not install the Cognito UCA.
5. Remove the shock, make sure the lower control arm is supported as the shock and sway bar are the only things holding it in place as this time. Unbolt the front shock upper and lower mounts and remove it.
 - **NOTE:**
You can compress the shock by pulling down on the body or lower the support under the lower control arm to make removal easier.
6. Knock out the studs on the removed shocks using a deep socket to cup the flat side and a hammer to tap them out (Figure 1).
7. Reinstall the shock in the lower mount using OEM hardware and torque specs. Use the 1/2" hardware in **HP9271** to install the shock in the upper mount with the 3/4" spacer. From the bottom up, the order should be bolt, washer, shock pin, spacer, strut tower frame, washer, and lock nut (Figure 2). Torque to **50ft-lbs**.
 - **NOTE:**
Only use these extender spacers with the **OEM** shocks, aftermarket shocks may be longer and cause damage if used along with these spacers.

(FIGURES ON NEXT PAGE)

INSTALLATION- CONTINUED*Figure 1: Remove OEM Studs.**Figure 2: Spacer and Hardware.*

8. Refer back to instruction set **7440** to install the Cognito upper control arms, pick up where the install left off. Work through until instructed to install the wheels and tires onto the truck, stop at this point and do not install the wheels and tires.
9. Refer back to instruction set **7037** to load the torsion bars and set ride height. Continue where the install left off, and work through the rest of the steps to completion.

This completes the installation steps, enjoy your new Cognito 3" Standard Leveling Lift Kit!

WARRANTY / RETURN POLICY / SAFETY

Cognito Limited Lifetime Warranty

Cognito Motorsports, Inc. hereinafter “Cognito,” warrants to the original retail purchaser, that its suspension products are free from workmanship and material defects for as long as the purchaser owns the vehicle on which the product(s) were originally installed. This warranty will be void if any modifications are made to the components, including alterations to the surface finish, i.e.; painting, powder coating, plating, and/or welding, or if they are improperly installed. Cognito truck suspension products are not designed nor intended to be installed on “competition” vehicles used in race applications, stunt or for exhibition purposes that are outside of the intended operating conditions specified by the manufacturer. Racing and competition are defined as any contests between two or more vehicles; or vehicles competing individually on off road circuits in timed events (whether or not such contests are for an award or prize).

This warranty does not include coverage for police, taxi, government or commercial vehicles, and the warranty does not cover Cognito products sold outside of the USA. Cognito’s obligations under this warranty are specified and applied at its sole discretion, and warranty coverage is limited to repair or replacement of the defective product(s). Any and all costs of removal, installation or reinstallation; freight charges, incidental or consequential damages associated with the covered products are expressly excluded from this warranty.

The following items are exempt from Cognito limited warranty coverage: bushings, bump stops, tie-rod ends (Heim joints) and limiting straps. These parts are “consumables” and designed to wear as a normal part of their duty cycle, therefore they are not considered defective when worn. The aforementioned products are warrantied separately against defects in workmanship, for 60 days from the date of purchase. As a condition of warranty validation, respective Cognito suspension components must be installed as a complete system (not combined with non-Cognito hardware or ancillary parts). Any substitutions or omission of required components will void the warranty. Some minor cosmetic wear and imperfections may occur to parts during shipping, which is not covered under this warranty. This limited warranty does not apply to any components that have been subjected to collision damage, negligence, alteration, abuse, or misuse, and coverage does not extend to products manufactured by third-party companies. Cognito reserves the right to supersede, discontinue, or change the design, finish, part number and/or application of its parts when deemed necessary, without notice.

Return Policy

Product returns will not be accepted without prior written approval from an authorized Cognito representative. All products being returned must be shipped via trackable, prepaid freight. Returned products are subject to a 25% percent restocking fee. The eligible return period for products purchased directly from Cognito is 30 days from the verified date when the product(s) were originally received by the purchaser.

Product Safety Advisory

The installation of Cognito steering and suspension components will modify your vehicle’s original factory equipment and geometry, which may cause it to handle differently than a stock (unaltered) vehicle. Installation of these components is not intended to strengthen nor reinforce the vehicle’s frame, nor are they designed to increase rollover protection. It is necessary to periodically inspect all suspension and drive train components for proper attachment, torque specifications, operation, and for any potential unusual wear or damage. Installation of these parts will modify the height of the vehicle and may raise the center of gravity. Modifying vehicle height combined with off road operation may increase your vehicle’s susceptibility to rollover conditions, which may cause serious injury or death. Many states regulate allowable vehicle height modifications, and it is your responsibility to know and comply with the legal requirements specified by the laws where you reside. Modifications to your vehicle’s ride height may also affect the ride quality, driver input response, trackability and handling, and wear to your vehicle’s suspension components and tires.