

ROUGH COUNTRY

SUSPENSION SYSTEMS®

TOYOTA 1996-02 4Runner 1996-04 Tacoma 2.5" Loaded Strut

Thank you for choosing Rough Country for all your vehicle needs.

Please read instructions before beginning installation. Check the kit hardware against the kit contents shown below. Be sure you have all needed parts and know where they go.

If question exist, please call us @1-800-222-7023. We will be happy to answer any questions concerning this product.

Check all fasteners for proper torque. Check to ensure for adequate clearance between all components.

Periodically check all hardware for tightness.

KIT CONTENTS:
2.5" Loaded Struts x2

HARDWARE INCLUDED:
10mm Nuts x6

TOOLS NEEDED:
10mm Wrench or Socket
12mm Wrench or Socket
14mm Wrench or Socket
19mm Wrench or Socket
21mm Socket
Floor Jack
Jack Stands
Ball joint / Pitman arm puller



Torque Specs:

Size	Grade 5	Grade 8	Size	Class 8.8	Class 10.9
5/16"	15 ft/lbs	20ft/lbs	6MM	5ft/lbs	9ft/lbs
3/8"	30 ft/lbs	35ft/lbs	8MM	18ft/lbs	23ft/lbs
7/16"	45 ft/lbs	60ft/lbs	10MM	32ft/lbs	45ft/lbs
1/2"	65 ft/lbs	90ft/lbs	12MM	55ft/lbs	75ft/lbs
9/16"	95 ft/lbs	130ft/lbs	14MM	85ft/lbs	120ft/lbs
5/8"	135ft/lbs	175ft/lbs	16MM	130ft/lbs	165ft/lbs
3/4"	185ft/lbs	280ft/lbs	18MM	170ft/lbs	240ft/lbs

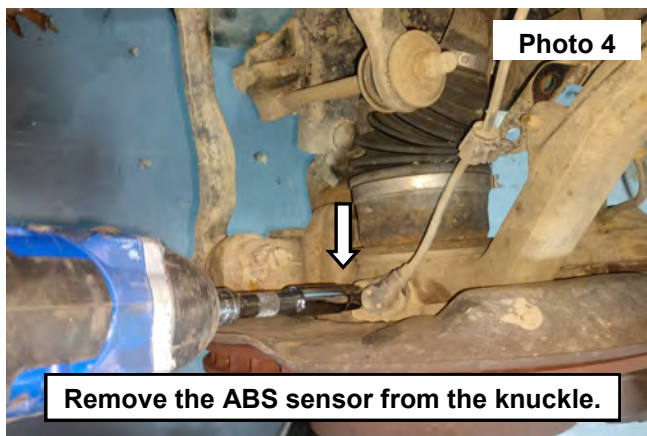
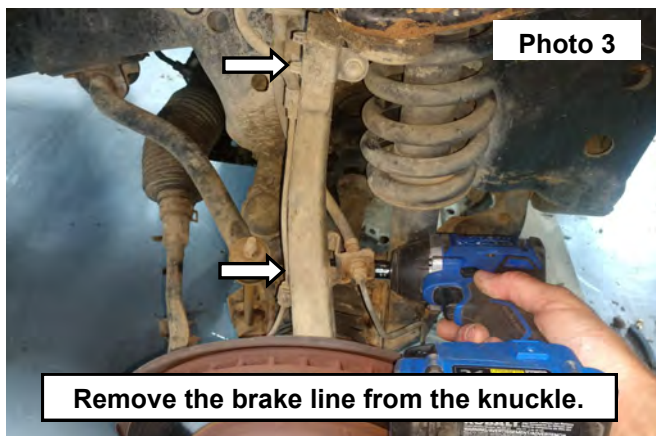


INSTALLATION INSTRUCTONS

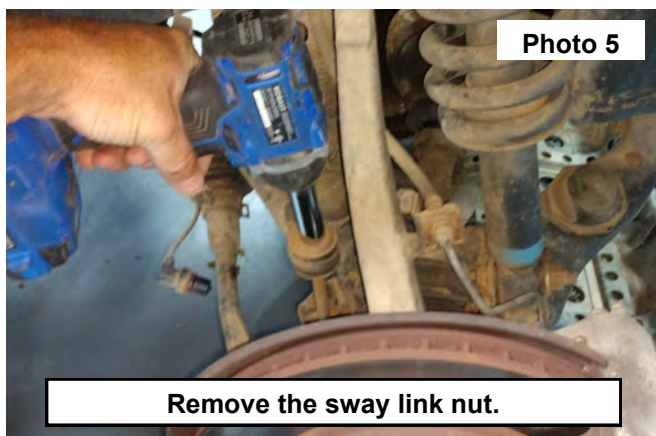
1. Using a jack lift up the front of the vehicle, place jack stands under the frame and then lower the vehicle onto the jack stands.
2. Remove the wheels and tires from the vehicle using a 21mm socket. **See Photo 1.**
3. Remove the brake line and the ABS line from the upper control arm using a 10mm socket and from the knuckle using a 12mm socket. Retain hardware. **See Photos 2 and 3.**



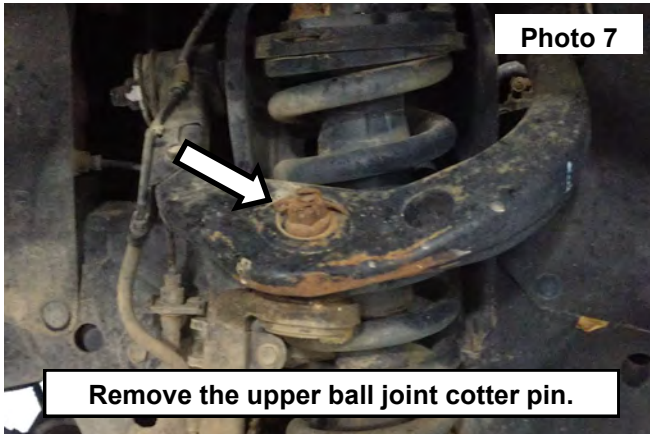
4. Using a 10mm socket remove the ABS sensor from the knuckle. **See Photo 4.**



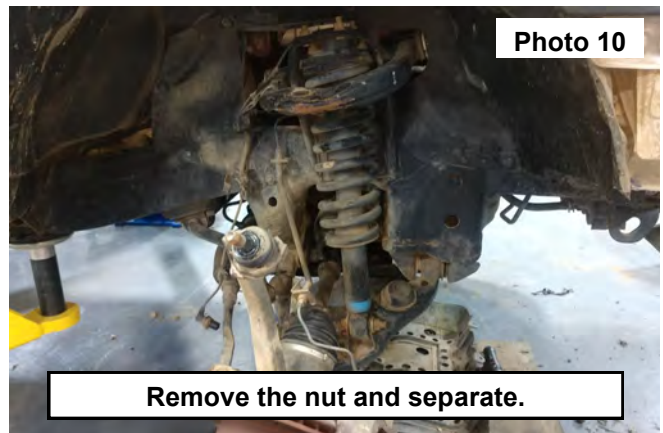
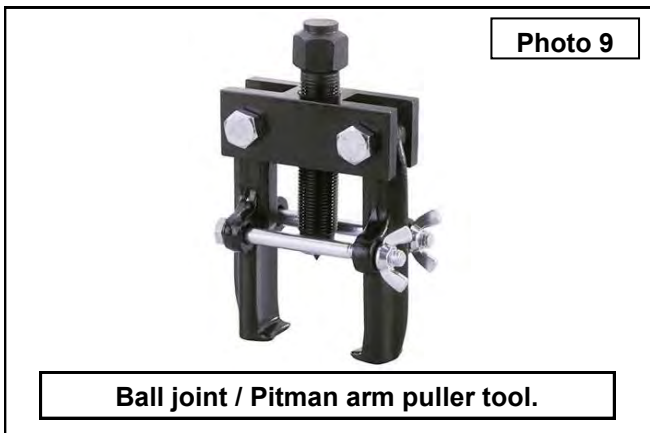
5. Support the lower control arm using a jack.
6. Remove the sway link nut using a 14mm socket. **See Photo 5.** Retain hardware.
7. Remove the upper cup washer and bushing. **See Photo 6.** Retain hardware.



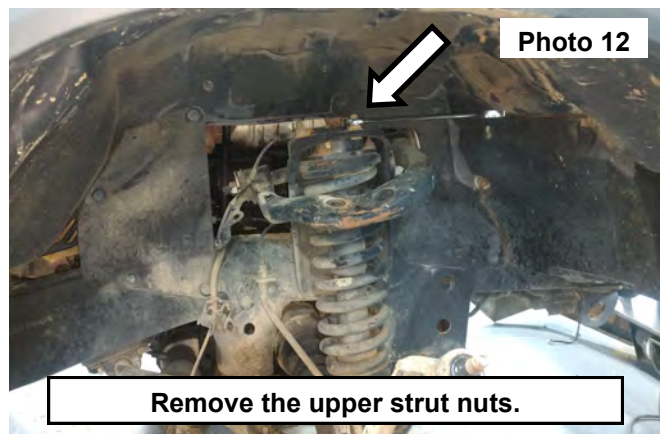
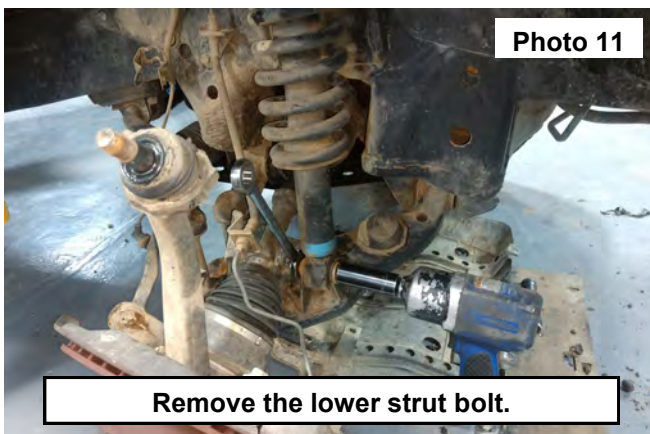
8. Remove the upper ball joint cotter pin from the castle nut. **See Photo 7.**
9. Loosen the upper ball joint nut using a 19mm wrench. **See Photo 8.**



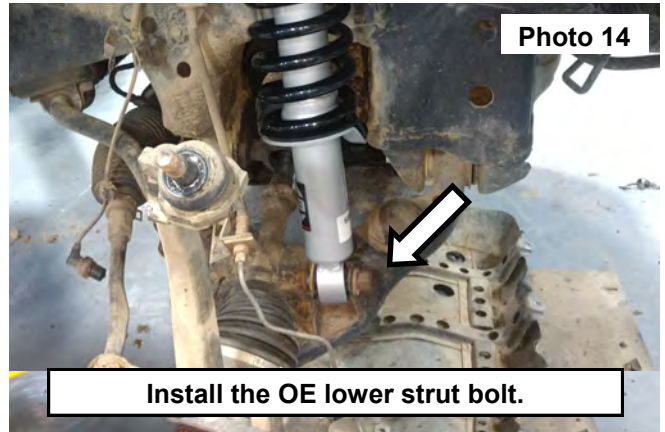
10. For best results a Ball joint / Pitman arm puller tool to unseat the ball joint. Using this tool puts pressure on the ball joint to unseat the taper from the upper control arm. **See Photo 9.**
11. Once the upper ball joint has been unseated, remove the nut. Then separate the upper control arm from the knuckle. **See Photo 10.**



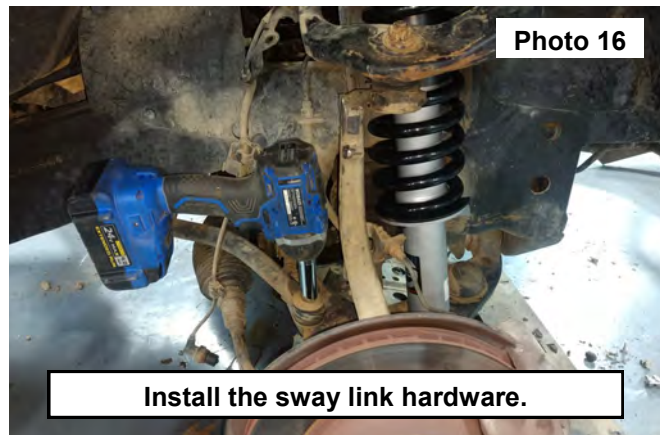
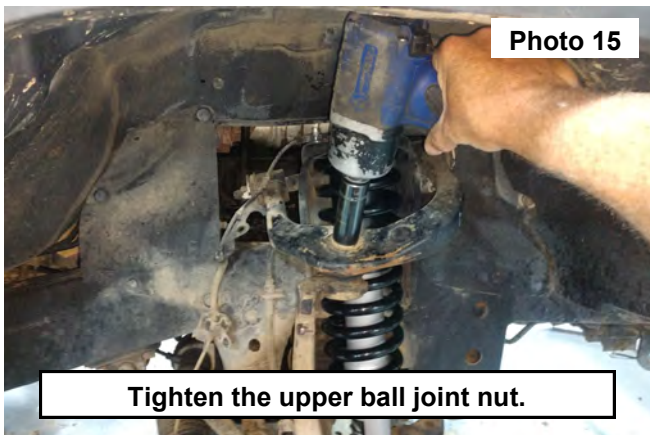
12. Remove the lower strut bolts and nut using a 19mm socket and wrench. **See Photo 11.**
13. Remove the (3) upper strut nuts using a 14mm wrench.
14. Remove the strut from the vehicle. **See Photo 12.**



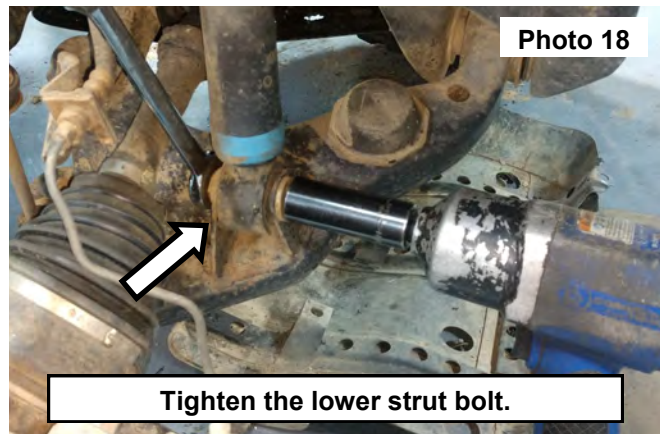
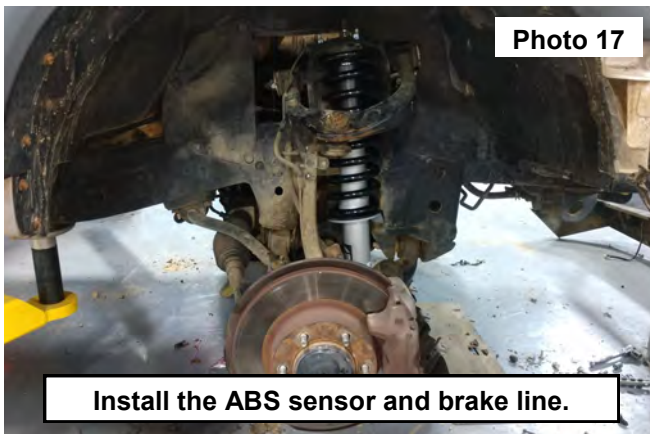
15. Locate the new RC strut with the (3) supplied 10mm nuts with each strut.
16. Install the new strut into the upper strut mount using the supplied (3) upper strut nuts. Tighten using a 14mm wrench **See Photo 13.**
17. Install the OE lower strut bolt. **DO NOT TIGHTEN AT THIS TIME.** Hardware will be tightened with the weight of the vehicle on the ground. Using a 19mm wrench and socket. **See Photo 14.**



18. Connect the upper control arm and the strut. Tighten the upper ball joint nut using a 19mm socket. **See Photo 15.**
19. Install the upper ball joint cotter pin.
20. Install the sway link hardware and tighten using a 14mm socket. **See Photo 16.**



21. Install the ABS sensor, wiring and brake lines to the knuckle and upper control arm using a 10mm and 12mm socket. **See Photo 17.**
22. Install the opposite side strut.
23. Install the wheels and tires, remove the jack stands then lower the vehicle onto the ground.
24. Tighten the lower strut bolt using a 19mm socket and wrench. **See Photo 18.**



By purchasing any item sold by Rough Country, LLC, the buyer expressly warrants that he/she is in compliance with all applicable, State, and Local laws and regulations regarding the purchase, ownership, and use of the item. It shall be the buyers responsibility to comply with all Federal, State and Local laws governing the sales of any items listed, illustrated or sold. The buyer expressly agrees to indemnify and hold harmless Rough Country, LLC for all claims resulting directly or indirectly from the purchase, ownership, or use of the items.

