

# ROUGH COUNTRY

## SUSPENSION SYSTEMS®

### CHEVY 2019-20 1500 Fender Flares

Thank you for choosing Rough Country for all your vehicle needs.

Please read instructions before beginning installation. Check the kit hardware against the kit contents shown below. Be sure you have all needed parts and know where they go.

If question exist, please call us @1-800-222-7023. We will be happy to answer any questions concerning this product.

Check all fasteners for proper torque. Check to ensure for adequate clearance between all components.

Periodically check all hardware for tightness.

#### KIT CONTENTS:

Driver Front Flare x1  
 Driver Rear Flare x1  
 Passenger Front Flare x1  
 Passenger Rear Flare x1

#### TOOLS NEEDED:

T15 Torx Bit  
 Phillips Bit  
 Side Cutter  
 Alcohol / Cleaner  
 Soft Cloth

#### F-C319201BAG:

Body Clips x14  
 #8 Screws x14  
 Fender Flare Edge Trim  
 Passenger Front Inner Fender Bracket x1  
 Driver Front Inner Fender Bracket x1

#### F-C319201BAG1:

Driver Fender Flare Bracket x2  
 Passenger Fender Flare Bracket x2

#### F-C319201BAG2:

Foam Tabs x 6  
 Small U-Clip x 6  
 Screws x 12  
 Long U-Clip x 6

#### F-C319201BAG3:

Instruction Sheet

#### Torque Specs:

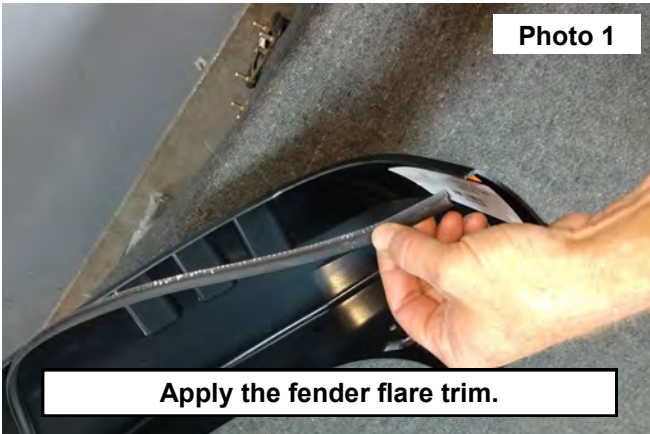
Size	Grade 5	Grade 8	Size	Class 8.8	Class 10.9
5/16"	15 ft/lbs	20ft/lbs	6MM	5ft/lbs	9ft/lbs
3/8"	30 ft/lbs	35ft/lbs	8MM	18ft/lbs	23ft/lbs
7/16"	45 ft/lbs	60ft/lbs	10MM	32ft/lbs	45ft/lbs
1/2"	65 ft/lbs	90ft/lbs	12MM	55ft/lbs	75ft/lbs
9/16"	95 ft/lbs	130ft/lbs	14MM	85ft/lbs	120ft/lbs
5/8"	135ft/lbs	175ft/lbs	16MM	130ft/lbs	165ft/lbs
3/4"	185ft/lbs	280ft/lbs	18MM	170ft/lbs	240ft/lbs



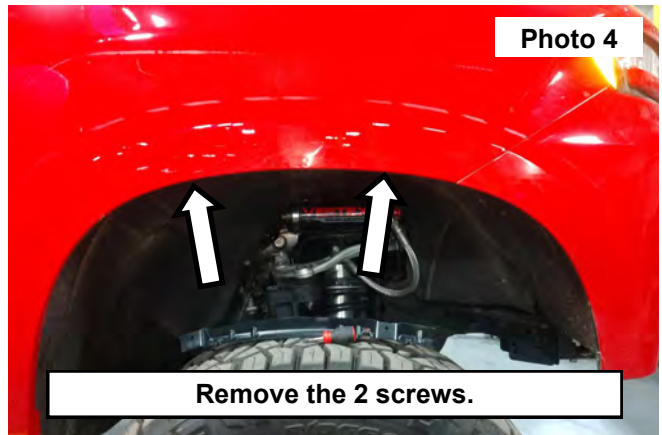
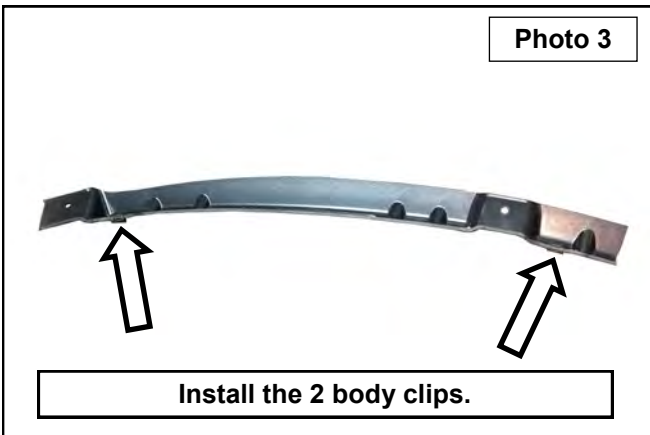


## INSTALLATION INSTRUCTIONS

1. Place the front fender flare on a table using a soft cloth. Clean the inside lip of the fender flare using alcohol. Apply the supplied edge trim over the lip and firmly press the trim onto the edge of the flare the entire length of the flare. **See Photo 1.**
2. Cut the excess trim from the fender flare. **See Photo 2.**



3. Install the (2) body clips onto the inner fender bracket. **See Photo 3.**
4. Clean the fender surface and inner fender well of dirt and debris.
5. Remove the (2) OE screws in the top of the splash guard using a T15 Torx bit. **See Photo 4.** Retain hardware.

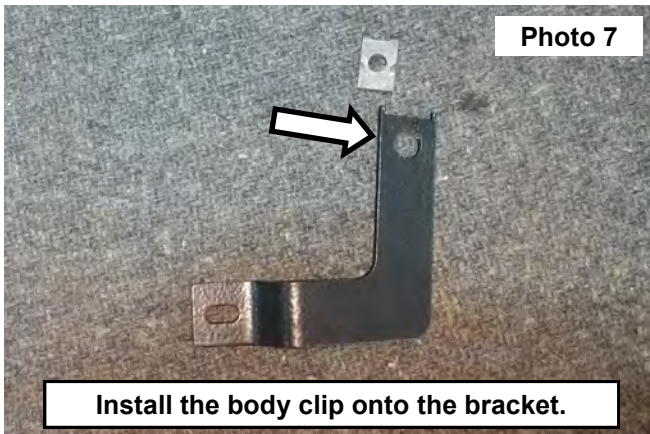


6. Install the inner fender bracket to the top of the fender using the retained OE screws. **See Photo 5.**
7. Tighten the inner fender bracket using a T15 Torx bit. **See Photo 6.**

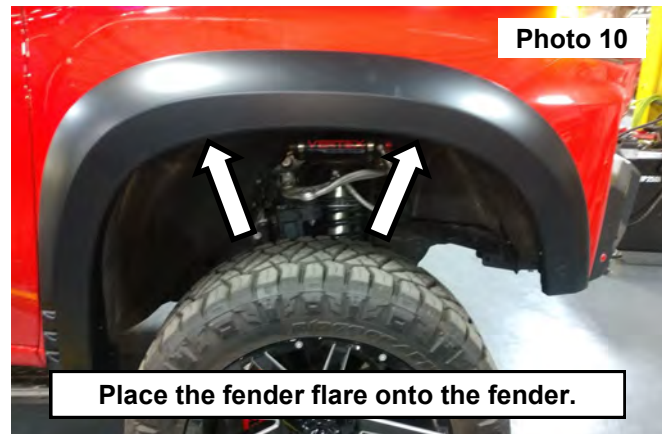




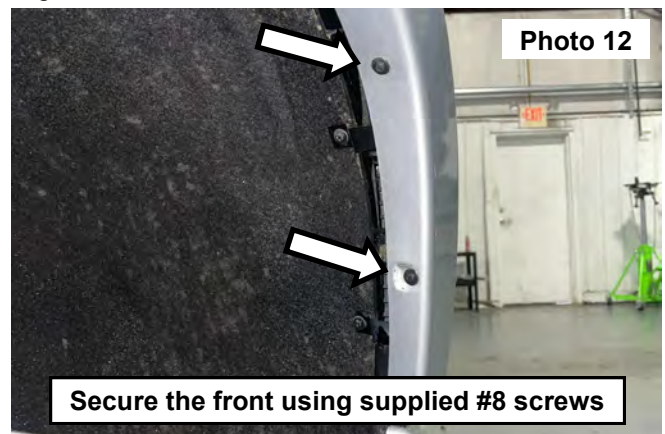
8. Locate the front driver and passenger side brackets and install the body clip onto the 6mm hole. **See Photo 7.**
9. Remove the OE screw on the bottom and screw above it on the inner fender as shown by using a T15 Torx bit, install the bracket using the slotted hole using the OE bolt. Tighten the bracket to where it can still be adjusted to install the fender flare. **See Photo 8.**



10. Using a T15 Torx bit remove the (3) screws in the splash guard and the (1) bolt in the bottom using a 10mm socket. Then remove the splash guard. Retain hardware. **See Photo 9.**
11. Place the fender flare onto the front fender and secure the top of the flare using (2) of the supplied #8 screws. Tighten using a Phillips bit driver. **See Photo 10.**



12. Secure the lower rear of the flare using the (2) retained OE screws. Tighten using a T15 Torx bit. **See Photo 11.**
13. Secure the front of the fender flare using (2) of the supplied #8 screws. Tighten using a Phillips bit driver. **See Photo 12.** After adjusting the flare tighten the inward OE screws using an T15 Torx bit.

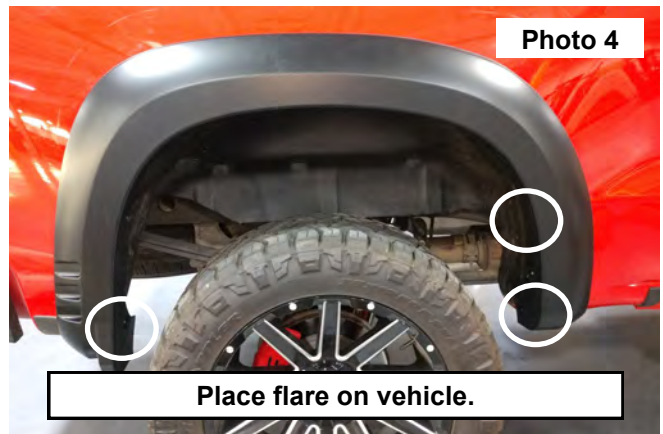


## REAR INSTALLATION INSTRUCTIONS

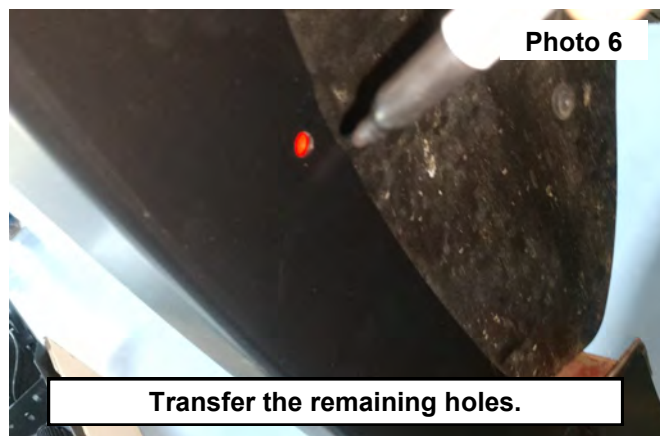
1. Place the rear fender flare on a table using a soft cloth. Clean the inside lip of the fender flare using alcohol. Apply the supplied edge trim over the lip and apply the double sided tape onto the inside of the flare. Remove the tape cover and stick the double sided tape to the flare. **See Photo 1.**
2. Cut the excess trim from the fender flare. **See Photo 2.**



3. Clean the fender surface and inner fender well of dirt and debris. **See Photo 3.**
4. Place the fender flare onto the vehicle. Note the stock screws that align with the fender flare mounting holes. Then remove the screws using a T15 Torx bit. **See Photo 4.**



5. Temporarily install the OE screws into (2) of the flare mounting holes to hold into position using the T15 Torx bit.
6. Mark the locations of the holes that will need the new mounting hardware. **See Photo 5 & 6.**
7. Remove the stock screws and fender flare from the vehicle.

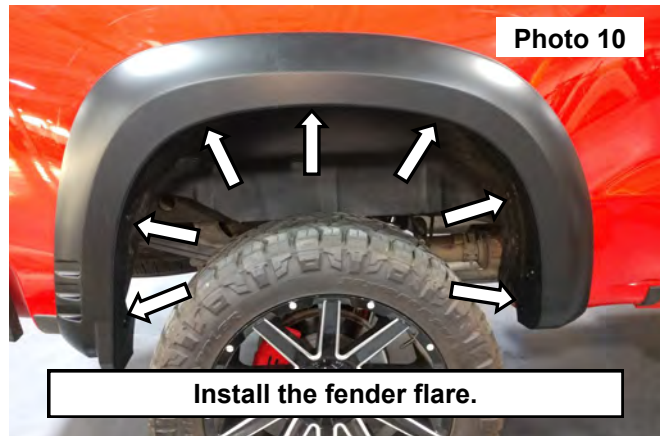
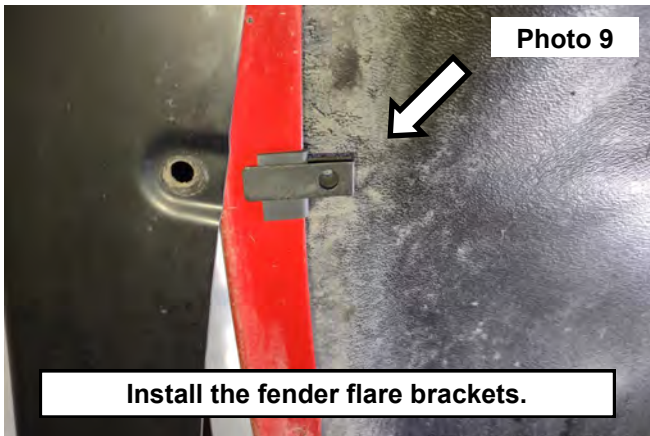




8. Locate the double sided tape and qty 6 long u-clips.
9. Remove the backing off of the double sided tape and place over center of the previously marked locations. **See Photos 7 and 8.**



10. Install the long u-clips as shown on the center of the double sided tape. **See Photo 9.**
11. Install the fender flare using new hardware at the bottom of the flare where the stock hardware was removed and using the supplied screws into the flare and the new clips. **See Photo 10.**
12. Tighten all hardware



By purchasing any item sold by Rough Country, LLC, the buyer expressly warrants that he/she is in compliance with all applicable, State, and Local laws and regulations regarding the purchase, ownership, and use of the item. It shall be the buyers responsibility to comply with all Federal, State and Local laws governing the sales of any items listed, illustrated or sold. The buyer expressly agrees to indemnify and hold harmless Rough Country, LLC for all claims resulting directly or indirectly from the purchase, ownership, or use of the items.

