

# ROUGH COUNTRY

## SUSPENSION SYSTEMS®



**WARNING:** This product contains a chemical known to the State of California to cause Cancer and Reproductive Harm. For more information, go to [www.P65Warnings.ca.gov](http://www.P65Warnings.ca.gov).

## 2017-22 FORD SUPERDUTY F250/F350 SPORT STYLE FLARES

### PRIOR TO INSTALLATION

- A) Install the flares according to these written instructions with the hardware provided. **WARNING:** Failure to install according to these instructions will invalidate the warranty. This includes, but is not limited to, using alternative installation methods, hardware, or materials. **DO NOT USE:** Loctite, Superglue, or similar products on the hardware or the flares. *Install flares on cleaned vehicle surfaces.*
- B) **Fit:** Verify the fit of the flares to vehicle prior to installation (some filing, sanding, or cutting may be necessary to ensure proper fit).
- C) **Painting:** (Optional) if paint is desired it must be done prior to installing flares on vehicle. Clean outer surface with a good grade degreaser. **DO NOT USE LACQUER THINNER OR ENAMEL REDUCER AS A DEGREASER.** Wipe outer surface thoroughly with a tack rag prior to paint. Application of plastic adhesion promoter for ABS plastic as per your paint system manufacturer's recommendations is required. Paint flares using a high-quality enamel, or polyurethane automotive paint. If painting edge trim (not recommended), use a flex additive.
- D) **Performance:** Using larger tires may increase the area required to turn the vehicle. Some tire/rim combinations may require lowering bump stops and or installing steering stops to prevent tire from contacting flare.
- E) **Exhaust System:** Modifications may be necessary to maintain a minimum 4" clearance between flares and exhaust pipes. (Exhaust gases should not vent directly onto flares)
- F) **Metal Protection:** All exposed fasteners and bare metal should be treated with rust resistant paint **BEFORE** installing flares. Spray inner fender wells with undercoating **AFTER** flare attachments have been completed.
- G) **Decals:** Flares may interfere with existing decals on vehicle. If you wish, remove decals prior to installation of flares.
- H) **Care & Cleaning:** Fender flares are built to last; any detergent you use to wash your vehicle is sufficient to clean the flare. Do not use any harsh abrasive detergents.

### TOOLS FOR EASY INSTALLATION:

- Soft Cloth or Alcohol Wipe
- Utility Knife
- Socket Wrench
- 7/32" Socket
- #2 Phillips Screwdriver
- Pry Tool
- Grease Pencil

**PLEASE READ:** Dirt and debris can become lodged between the fender flares and the vehicle's fenders, causing scratching and paint wear from vibration. Manufacturer is not responsible for any damage, and the installation of our fender flares is done with the buyer's understanding that this scratching and paint wear may occur.

**LIMITED LIFETIME WARRANTY AGAINST ANY MANUFACTURING DEFECTS:** To claim warranty you must provide Proof of Purchase.

## INCLUDED IN HARDWARE KIT:

1.



Short "U" Clip  
6 pcs

2.



Long "U" Clip  
8 pcs

3.



Plastic Retainer  
2 pcs

4.



Truss-Head Screw  
14 pcs

5.



Foam Tab  
8 pcs

6.



Wiper Style Edge  
Trim  
330 inches



### IF YOU PURCHASED GLOSSY BLACK FLARES (CODE "RCGB"):



Prior to beginning installation process, peel the protective liner from each plastic piece included in the flare kit – all flares and inner pieces.

NOTE: It will be difficult to remove liner once edge trim and hardware are installed.

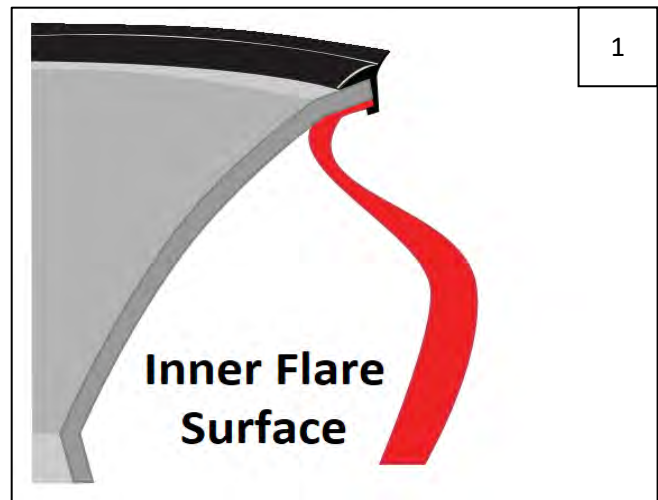
Once liner is removed, take care not to scratch flare surfaces. If flare needs to be cleaned, wipe gently with a clean, soft cloth.



## SECTION 1: EDGE TRIM INSTALLATION

Peel 2-3 inches of red vinyl backing away from supplied edge trim tape. Applying the adhesive side of the edge trim to the inner side of the flare, affix the edge trim to the top edge of the flare (the portion that comes in contact with the side of the vehicle).

Press edge trim into place along the top edge of the flare in one-foot increments, pulling red vinyl backing free as you continue to work your way around the top edge of the flare. Trim edge trim flush with ends of flare.



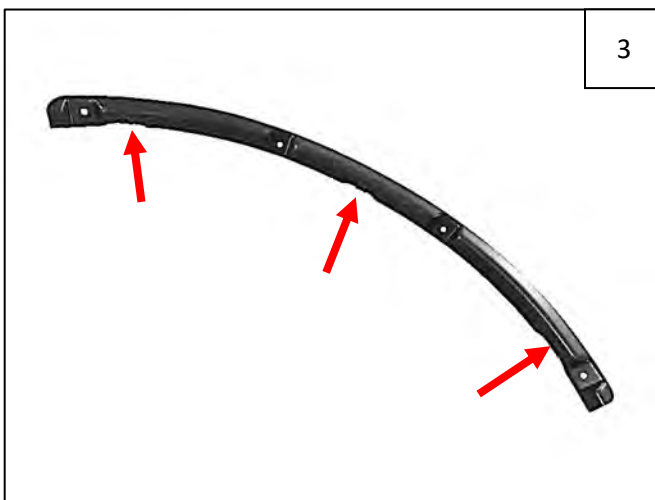
## SECTION 2: FRONT FLARE INSTALLATION



Remove 6 factory screws with a 7/32" socket wrench. Retain screws for reinstallation. NOTE: For Platinum Edition, there are additional screws to be removed and retained.



Install 3 Short "U" Clips onto the Inner Bracket as shown. NOTE: Driver's side Inner Bracket is marked with an "LH" and the passenger's side Inner Bracket is marked with an "RH".



Clip locations.



Line up holes in the Inner Bracket with the 4 upper-most factory holes in wheel well.



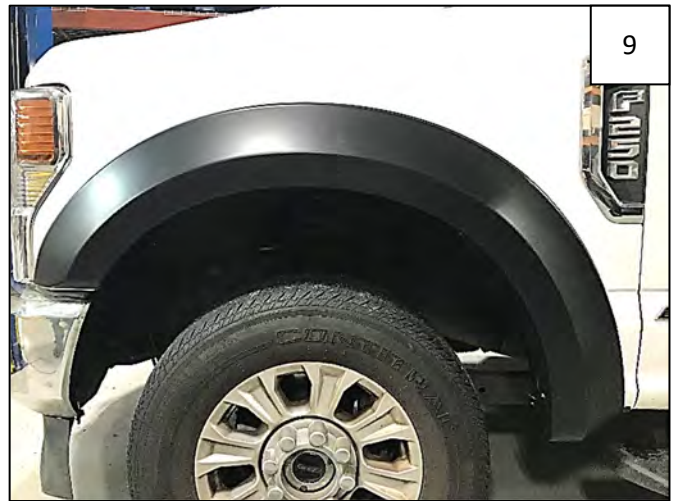
Using a 7/32" socket, reinstall 4 factory screws through the Inner Bracket.



Aligning flare on fender, press inward on the flare to line up the flare mounting holes with the clips on the Inner Bracket. Install 3 supplied Truss-Head Screws through the flare and into the inner piece. Do not tighten.



Still pressing flare to fender, reinstall 2 remaining factory screws removed in Step 5. Apply pressure to flare towards vehicle body at each fastening point and tighten all fasteners.



Completed Front Flare Installation.

### SECTION 3: REAR FLARE INSTALLATION



Using a pry tool, remove plastic factory fastener on rear splash shield.



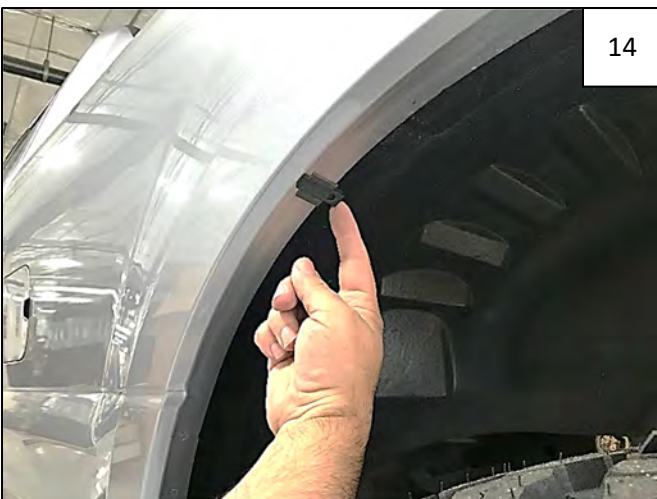
Align Rear Flare on fender using body style line and mud flap holes as a guide and mark 4 hole locations with a grease pencil.



Hole locations.



Peel liner from a supplied Foam Tab and center tab over each mark made in Step 11, folding each tab over the wheel well lip.



Slide a supplied Long "U" Clip over each foam tab, making edge of clip flush with outer edge of wheel well lip as shown.



While holding flare to vehicle, start supplied Truss-Head Screws through the 4 topmost mounting holes in flare and into clips installed in Step 14. Apply pressure to flare towards vehicle body at each fastening point and tighten all fasteners.



Install supplied Plastic Retainer through flare and into factory hole at rear of wheel well.



Completed Rear Flare Installation.