

# Installation Instructions

Eibach Inc .264 Mariah Circle Corona, CA 92879  
USA Tech Support 800-507-2338 ext. 114



## PRO-TRUCK COILOVER 2.0: E86-35-056-01-22

2021+ Ford Bronco

### Notes

IMPORTANT: When removing the front shocks the axle should be removed from the hub to prevent damage to axle assemblies as they can be come apart from over extension during removal. Ensure that the vehicle is properly hoisted during installation and all fasteners are properly tightened and secured before road testing.

### Kit Contents

Description	Part Number	Quantity
35166.9003	FRONT COILOVER ASSEMBLY	2
35166.9004	REAR COILOVER ASSEMBLY	2
35148.8000HK	HARDWARE KIT	2
ETC2.0	2.0 COIL SPANNER WRENCH	1

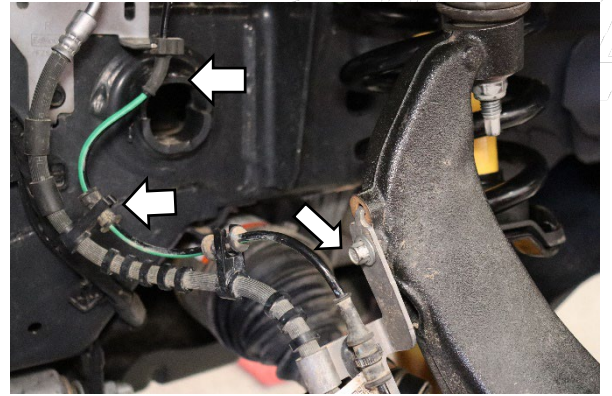
### Installation Notes

#### Read all instructions before beginning installation

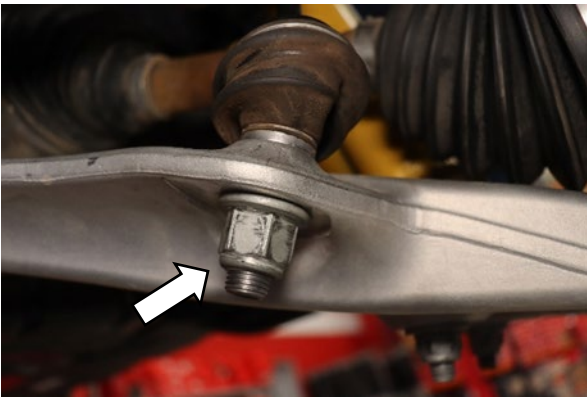
- Only qualified mechanics experienced in the installation and removal of suspension components should perform this installation.
- Use of a hoist and screw jack is highly recommended and will substantially reduce installation time.
- Never work on or under a vehicle unless it is properly supported by safety stands and wheels are blocked.
- Never use impact wrenches or impact guns to install or remove shock absorber piston components, shafts and Piston rod nuts.
- All Eibach springs should be installed with the Eibach logo right-side-up.
- After Installation, inspect and adjust the following: Wheel Alignment; tire/wheel fender clearance when using aftermarket wheels or tires; brake line clearance and attachments; anti-lock-brake system sensors.



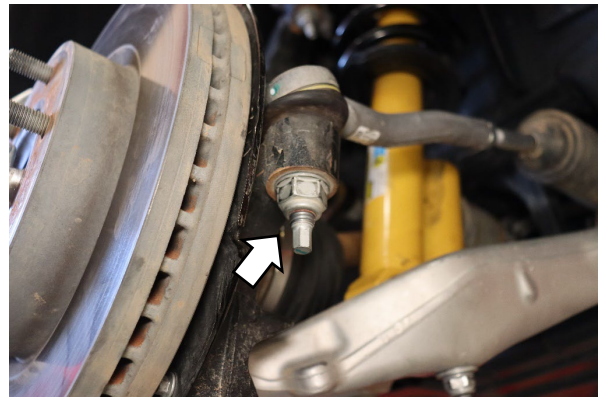
1. Safely lift and support vehicle. All steps of removal and installation should be performed on both sides.



2. Remove the brake line bracket bolt with an 8mm wrench. Remove the wheel speed sensor from its bracket.



3. Remove the sway bar end link nut with a 18mm wrench.



4. Remove the outer tie rod with a 21mm wrench.



5. Remove the upper control arm from the knuckle by removing the nut with an 18mm wrench.



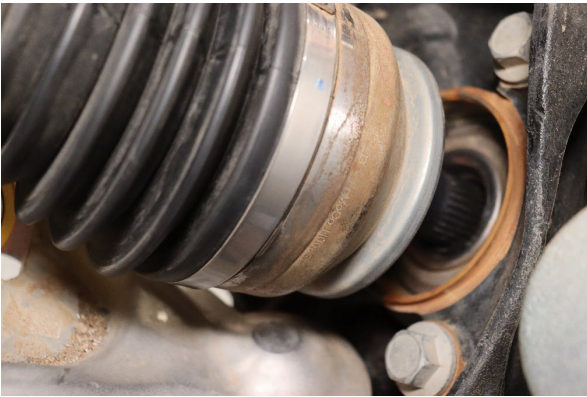
6. Remove the axle nut with a 36mm socket.



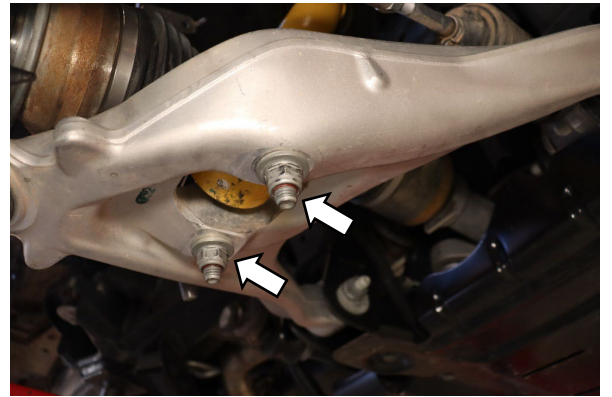
7. Strap the knuckle to prevent excessive droop and possible axle damage.



8. Remove the upper control arm from the steering knuckle



9. Remove the axle from the knuckle.



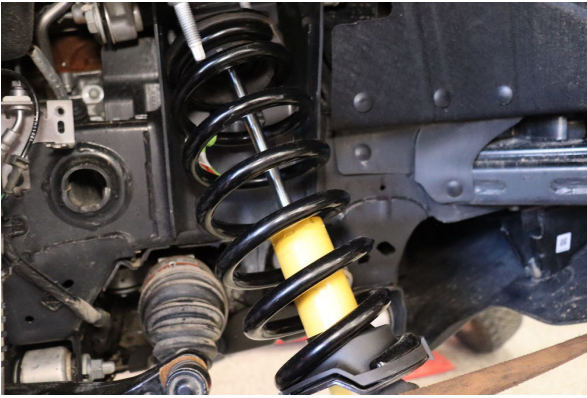
10. Remove the lower shock mount nuts with a 18mm wrench.



11. Lower the lower control arm and fully remove the axle and lower shock mount.



12. Remove the upper shock mount nuts with a 15mm wrench.



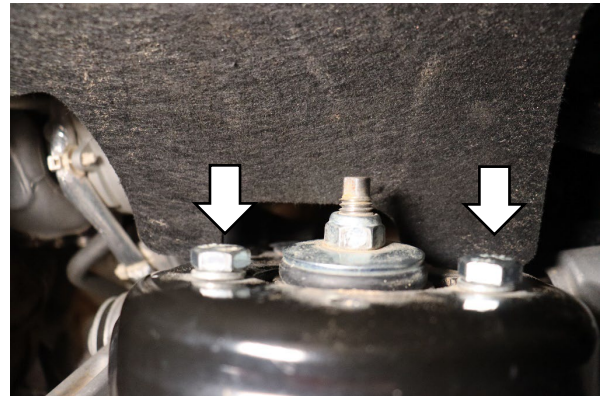
13. Remove the front shock assembly.



14. Set the front coilover assembly to the desired height before installation. Ensure that both coils are set to the same height. Out of the box heights and adjustment recommendations can be found in the table at the end.



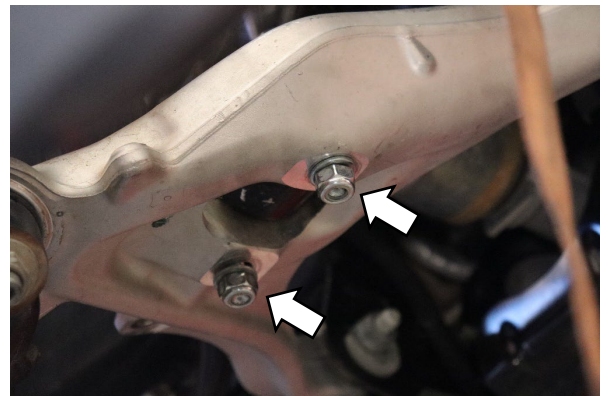
15. Install coilover.



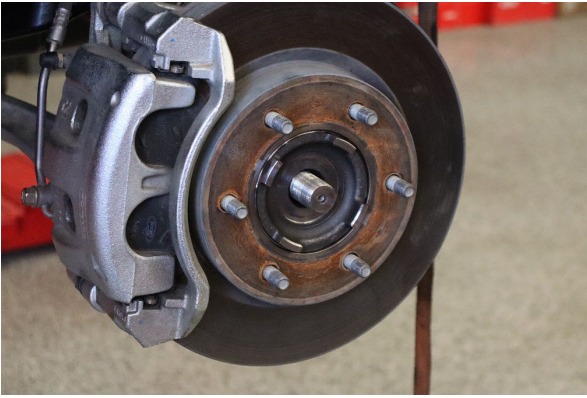
16. Install the top hat with the provided bolts and fasten them with a 17mm wrench.



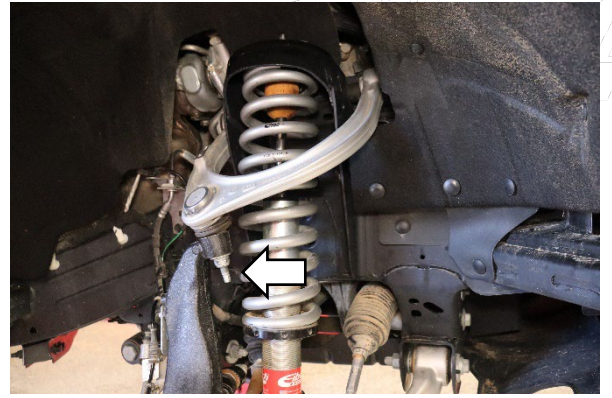
17. Install the lower shock mount with the provided hardware kit.



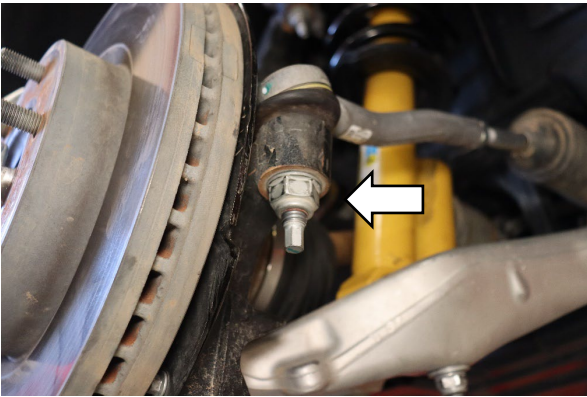
18. Tight the nuts for the lowe shock mount with a 19mm wrench



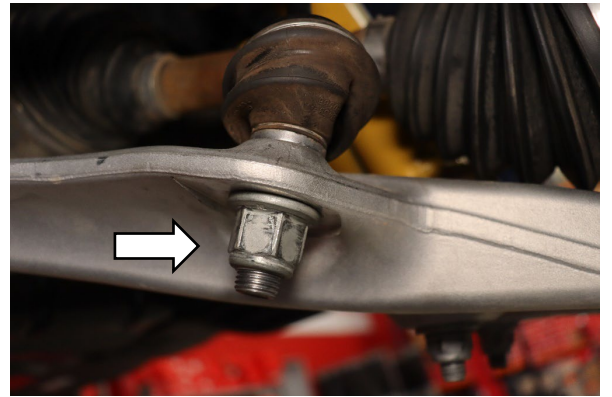
19. Reinstall the axle shaft into the hub.



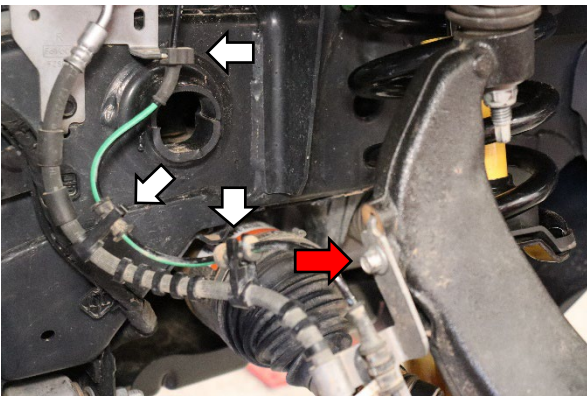
20. Install the upper control arm into the steering knuckle and secure the control arm by tightening the ball joint nut with an 18mm wrench.



21. Reinstall the outer tie rod and secure the nut with a 21mm wrench



22. Install the sway bar end link and secure the nut using a 18mm socket.



23. Reinstall the brake line bracket with an 8mm socket. Install the ABS/wheel speed sensor wire back into the mounting brackets

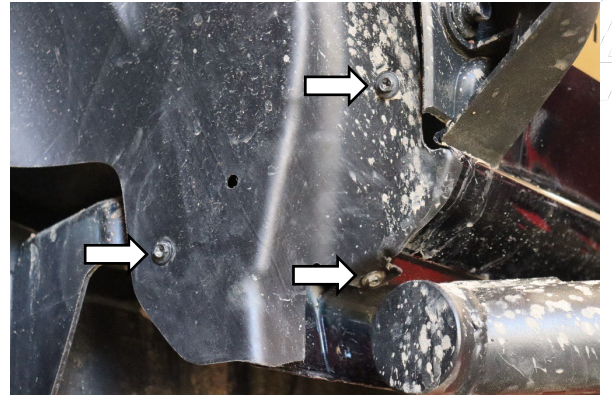


24. Reinstall the axle nut and torque to 221 ft-lbs.

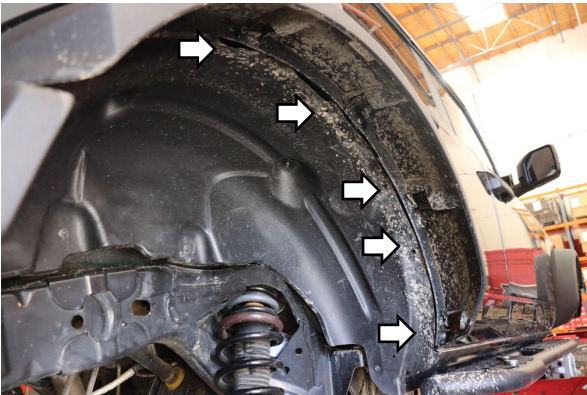


Rear Coilover Install

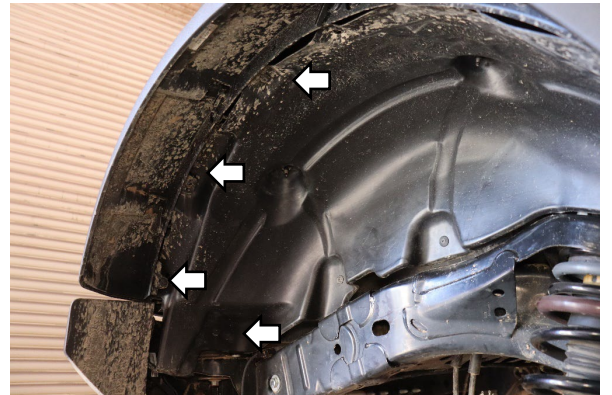
1. Safely hoist the vehicle and remove the rear wheels.



2. Remove the three bolts with an 8mm socket.



3a. Remove the clips holding the fender liner



3b. Remove clips retaining fender liner



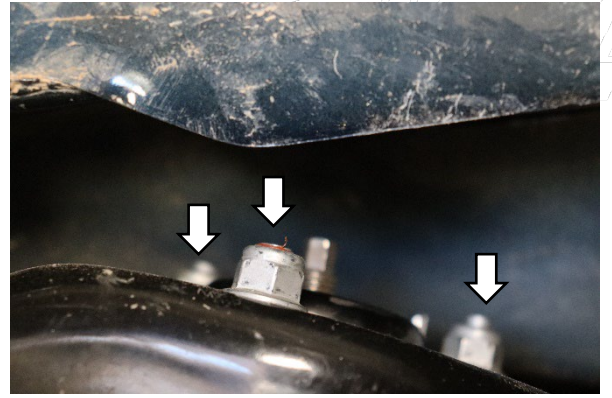
4. Remove the two plastic nuts that retain the fender liner. These can be removed by hand.



5. Remove the fender liner.



6. Safely support the rear axle and remove the lower shock mounting bolt with a 27mm socket.



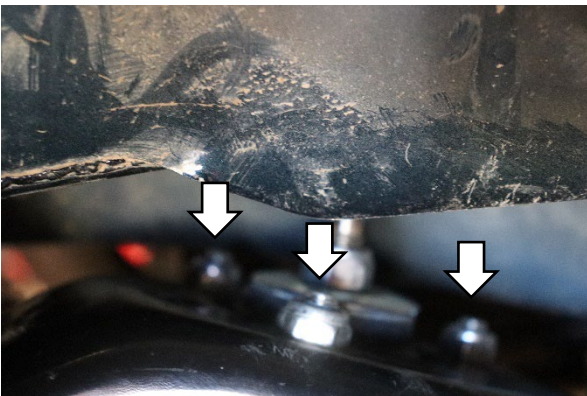
7. Remove the three top hat nuts with a 15mm wrench.



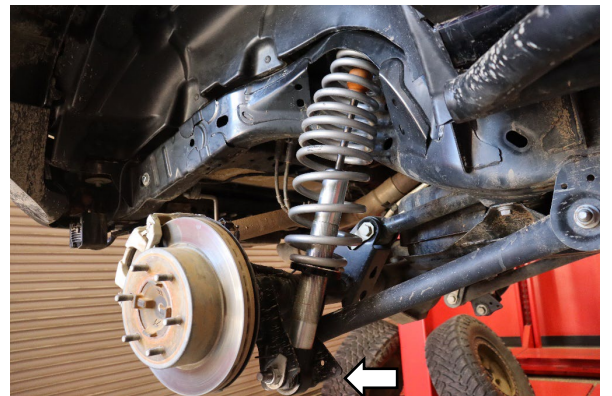
8. Remove the rear shock assembly.



9. Install the rear coilover.



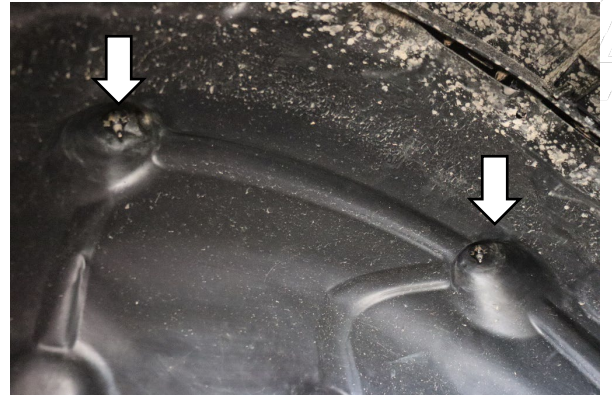
10. Install the top hat with the provided bolts. Tighten them with a 17mm wrench.



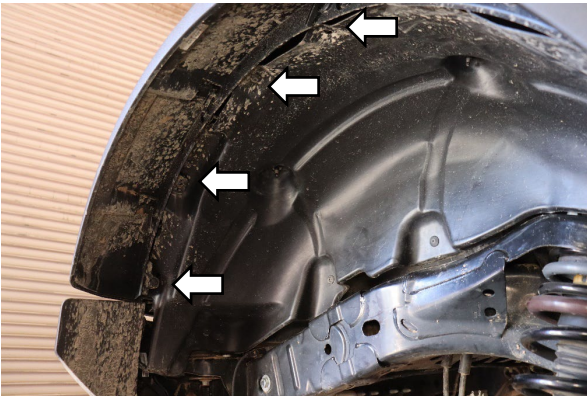
11. Secure the lower shock mount bolt with a 27mm socket.



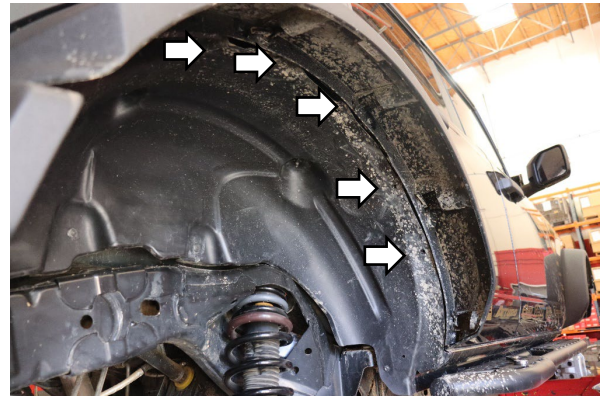
12. Place the fender liner back in the wheel well.



13. Reinstall the plastic nuts by hand.



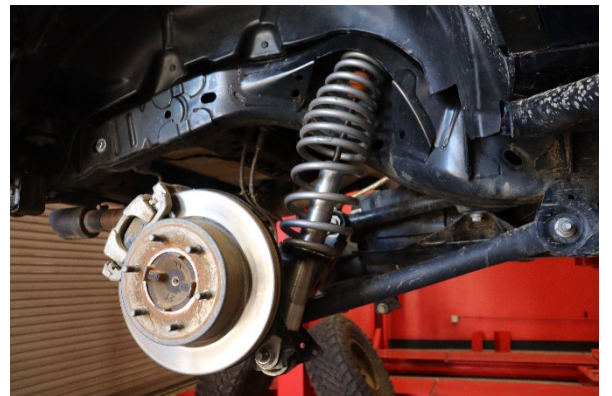
14a. Install screw in clips



14b. Install screw in clips



15. Install the three 8mm screws with a wrench.



Double check that everything is tight reinstall and torque the wheels and road test the vehicle.



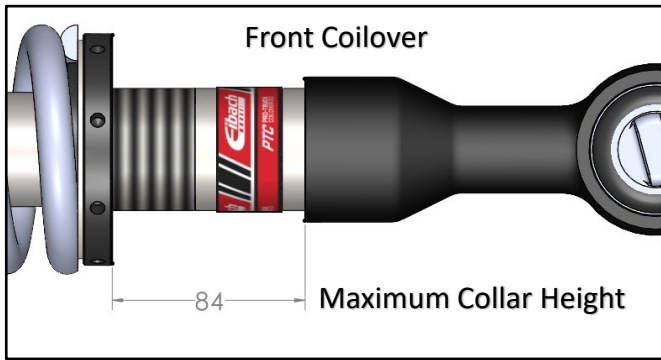


All lift heights are in inches and are approximate values. Actual lift will vary depending on options and additional weight on vehicle.

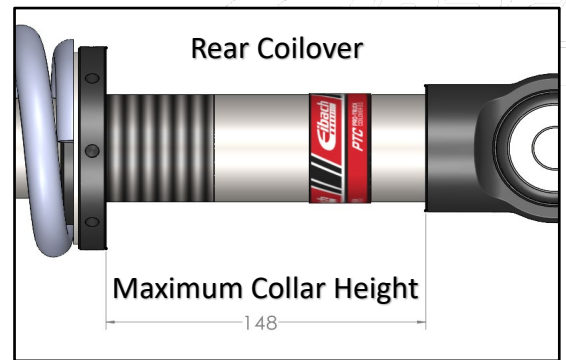
Adjusting the front coilovers approximately 11/16" at the spring collar will provide you with 1" change in ride height at the front.

Adjusting the rear coilovers approximately 1" at the spring collar will provide to with 1" change in ride height at the rear.

MODEL	ENGINE	FRONT OUT OF THE BOX	REAR OUT OF THE BOX	FRONT FULL LOW	FRONT FULL HIGH	REAR FULL LOW	REAR FULL HIGH
BASE	2.7L	3.0	3.1	1.0	3.3	2.4	3.8
BIG BEND	2.7L	3.0	3.1	1.0	3.3	2.4	3.8
BLACK DIAMOND	2.7L	3.0	3.1	1.0	3.3	2.4	3.8
OUTERBANKS	2.7L	3.0	3.1	1.0	3.3	2.4	3.8
BADLANDS	2.7L	2.3	2.4	0.3	2.6	1.7	3.1
ANY SASQUATCH	2.7L	1.9	2.0	0.0	2.2	1.3	2.7
WILDTRAK	2.7L	1.9	2.0	0.0	2.2	1.3	2.7
FIRST EDITION	2.7L	1.9	2.0	0.0	2.2	1.3	2.7
BASE	2.3L	3.6	3.0	1.5	4.1	2.4	3.8
BIG BEND	2.3L	3.6	3.0	1.5	4.1	2.4	3.8
BLACK DIAMOND	2.3L	3.6	3.0	1.5	4.1	2.4	3.8
OUTERBANKS	2.3L	3.6	3.0	1.5	4.1	2.4	3.8
BADLANDS	2.3L	2.9	2.3	0.8	3.4	1.7	3.1
ANY SASQUATCH	2.3L	2.5	1.9	0.4	3.0	1.3	2.7



Note: Do NOT go above a spring collar height of 84mm from bottom of collar to base, as shown or else damage to the shock and suspension will occur.



Note: Do NOT go above a spring collar height of 148mm from bottom of collar to base, as shown or else damage to the shock and suspension will occur.