

ROUGH COUNTRY

SUSPENSION SYSTEMS®



WARNING: This product contains a chemical known to the State of California to cause Cancer and Reproductive Harm. For more information, go to www.P65Warnings.ca.gov.

2019-UP DODGE RAM 1500 TRADITIONAL STYLE FLARES

PRIOR TO INSTALLATION

- A) Install the flares according to these written instructions with the hardware provided. **WARNING:** Failure to install according to these instructions will invalidate the warranty. This includes, but is not limited to, using alternative installation methods, hardware, or materials. **DO NOT USE:** Loctite, Superglue, or similar products on the hardware or the flares. Install flares on cleaned vehicle surfaces.
- B) **Fit:** Verify the fit of the flares to vehicle prior to installation (some filing, sanding, or cutting may be necessary to ensure proper fit).
- C) **Painting:** (Optional) if paint is desired it must be done prior to installing flares on vehicle. Clean outer surface with a good grade degreaser. **DO NOT USE LACQUER THINNER OR ENAMEL REDUCER AS A DEGREASER.** Wipe outer surface thoroughly with a tack rag prior to paint. Application of plastic adhesion promoter for ABS plastic as per your paint system manufacturer's recommendations is required. Paint flares using a high-quality enamel, or polyurethane automotive paint. If painting edge trim (not recommended), use a flex additive.
- D) **Performance:** Using larger tires may increase the area required to turn the vehicle. Some tire/rim combinations may require lowering bump stops and or installing steering stops to prevent tire from contacting flare.
- E) **Exhaust System:** Modifications may be necessary to maintain a minimum 4" clearance between flares and exhaust pipes. (Exhaust gases should not vent directly onto flares)
- F) **Metal Protection:** All exposed fasteners and bare metal should be treated with rust resistant paint **BEFORE** installing flares. Spray inner fender wells with undercoating **AFTER** flare attachments have been completed.
- G) **Decals:** Flares may interfere with existing decals on vehicle. If you wish, remove decals prior to installation of flares.
- H) **Care & Cleaning:** Fender flares are built to last; any detergent you use to wash your vehicle is sufficient to clean the flare. Do not use any harsh abrasive detergents.

TOOLS FOR EASY INSTALLATION:

- Soft Cloth or Alcohol Wipe
- Utility Knife
- Awl
- Socket Wrench
- 8mm Socket
- Phillips Screwdriver

PLEASE READ: Dirt and debris can become lodged between the fender flares and the vehicle's fenders, causing scratching and paint wear from vibration. Manufacturer is not responsible for any damage, and the installation of our fender flares is done with the buyer's understanding that this scratching and paint wear may occur.

LIMITED LIFETIME WARRANTY AGAINST ANY MANUFACTURING DEFECTS: To claim warranty you must provide Proof of Purchase.

INCLUDED IN HARDWARE KIT:

1.



Push-In Pocket
Hardware, Brushed
Metal
44 pcs

2.



Push-In Pocket
Hardware, Black
44 pcs

3.



Mounting Tab
6 pcs

4.



"U" Clip
6 pcs

5.



Truss Head Screw
6 pcs

6.



Med. Wiper Style
Edge Trim
345 inches



IF YOU PURCHASED GLOSSY BLACK FLARES (CODE "RCGB"):



Prior to beginning installation process, peel the protective liner from each plastic piece included in the flare kit – all flares and inner pieces.

NOTE: It will be difficult to remove liner once edge trim and hardware are installed.

Once liner is removed, take care not to scratch flare surfaces. If flare needs to be cleaned, wipe gently with a clean soft cloth.



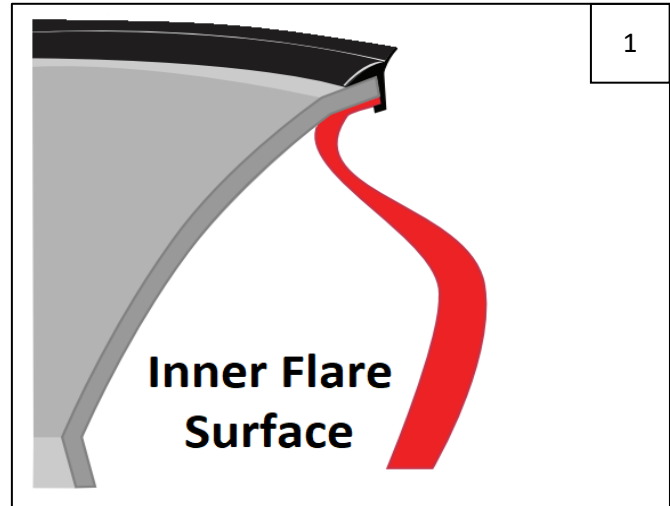
SECTION 1: EDGE TRIM INSTALLATION

Using a debris-free soft cloth or alcohol wipe, clean vehicle at areas of installation.

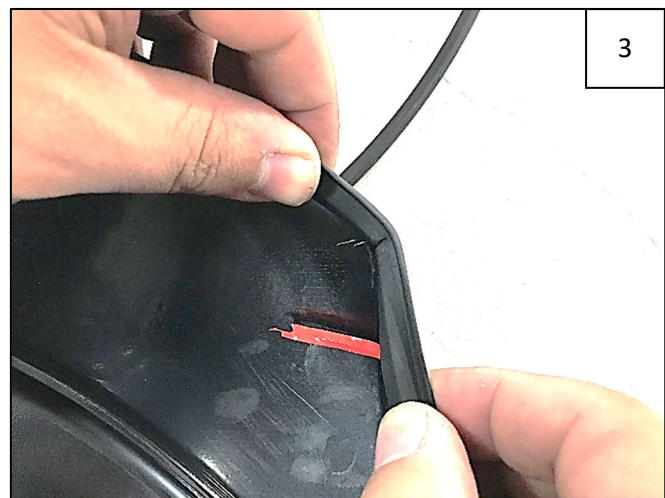
Peel 2-3 inches of red vinyl backing away from supplied edge trim tape. Applying the adhesive side of the edge trim to the inner side of the flare, affix the edge trim to the top edge of the flare (the portion that comes in contact with the side of the vehicle).

Press edge trim into place along the top edge of the flare in one-foot increments, pulling red vinyl backing free as you continue to work your way around the top edge of the flare. Trim edge trim flush with ends of flare.

On Rear Flare, around the gas tank cutout, the edge trim must be notched to prevent stretching and bunching. Refer to Pictures 2, 3, and 4.



As you come to the first "point" of the flare, cut a "V" notch into the backside of the edge trim at the sharpest part of the curve. Make sure that you retain 2-3 inches of vinyl backing for ease of further installation.



As you come to the second "point" in the flare, make another "V" notch in the backside of the edge trim, retaining 2-3 inches of vinyl backing. Proceed along the rest of the flare.



Correctly-installed edge trim around gas door.

SECTION 2: POCKET HARDWARE INSTALLATION



Peel liner from tape on Push-In Pocket Hardware (brushed metal or black as preferred). NOTE: There will be extra Push-In Pocket Hardware.



Insert Push-In Pocket Hardware into each flare pocket hole (on outer flare surface, 8 places each front flare, 9 places each rear flare). Push in to engage clip and tape adhesion.

SECTION 3: FRONT FLARE INSTALLATION



Remove 1 factory screw from center of mud flap. *The mudflap will remain on the vehicle – do not remove the other fasteners.*



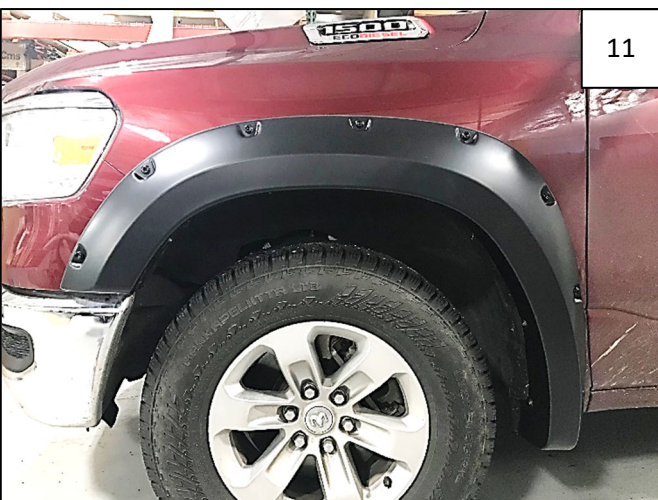
Hold flare to vehicle to note locations of screws to be removed. Remove and retain 6 factory screws from corresponding locations as shown.



Align flare with vehicle. Start 6 factory screws through holes in flare and into factory holes.



Apply pressure to flare towards vehicle body at each fastening point and tighten all fasteners.



Complete Front Flare Installation.



SECTION 5: REAR FLARE INSTALLATION



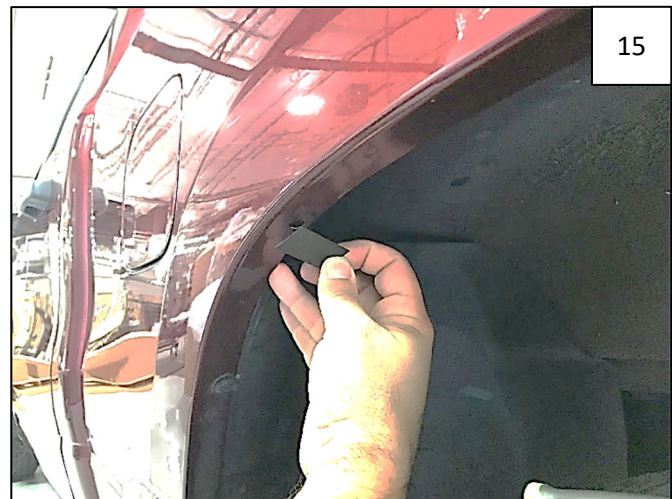
If vehicle is equipped with fender liners, remove 3 factory screws at top of fender. If vehicle is not equipped with fender liners, proceed to Step 13.



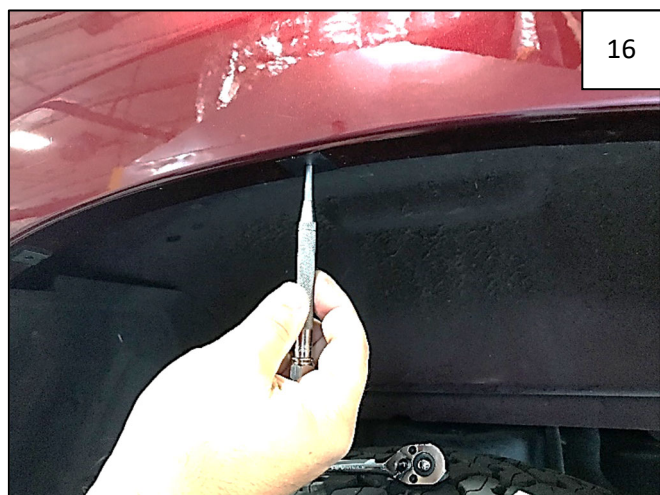
Using an 8mm socket, remove and retain 2 factory screws at front of rear wheel well.



Using an 8mm socket, remove and retain 1 factory screw at center of rear mud flap. The mud flap will remain on the vehicle; do not remove any other mud flap fastener.



For 3 topmost holes in wheel well, peel liner from a supplied Mounting Tab and center over each factory hole (3 places).



Using an awl, pierce Mounting Tabs installed in Step 15 and into factory holes underneath.



Slide a supplied "U" Clip over each Mounting Tab, centering over holes made in Step 16 (3 places).



18

Align flare on fender. Using a Phillips screwdriver, start 3 supplied Truss Head Screws through flare and into clips installed in Step 17.



19

Install 4 retained factory screws through remaining holes in flare and into factory holes in fender.



20

Apply pressure to flare towards vehicle body at each fastening point and tighten all fasteners.



21

Complete Rear Flare Installation.