

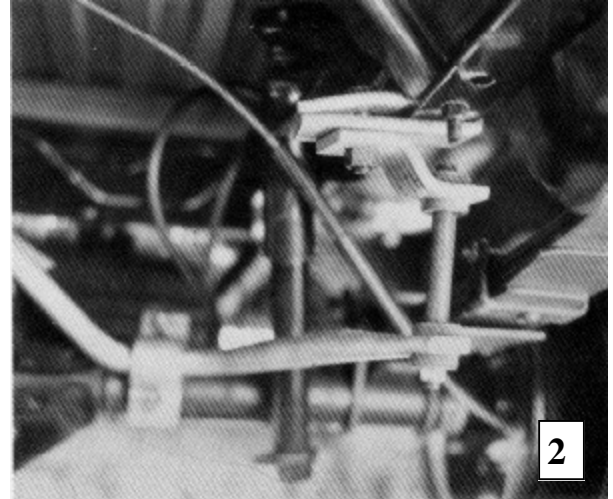
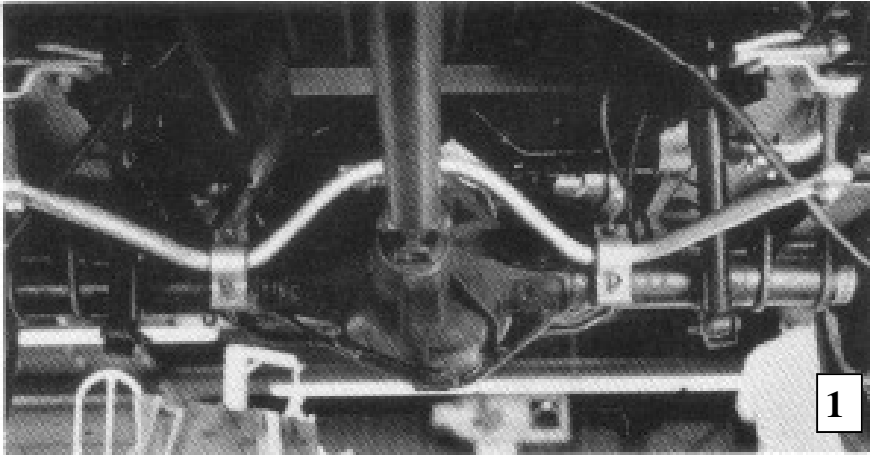
Hellwig PRODUCTS.com

559-734-7451 800-367-5480 FAX 559-734-7460

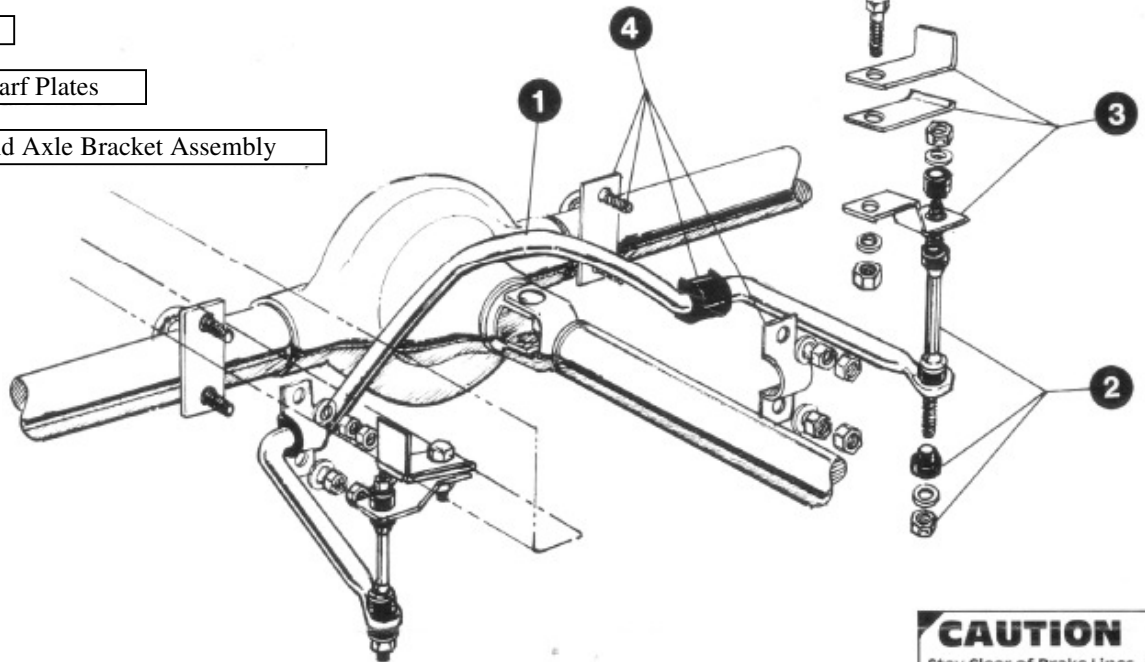
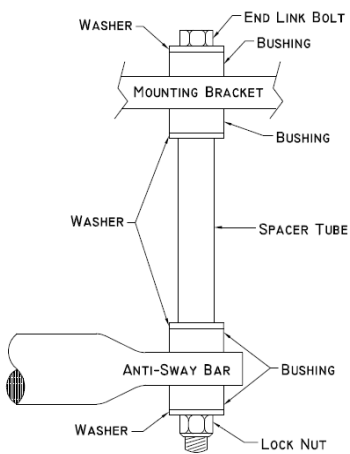
INSTALLATION INSTRUCTIONS REAR STABILIZER BAR

Thank you for purchasing a quality Hellwig Product.

PLEASE READ THIS INSTRUCTION SHEET COMPLETELY BEFORE STARTING YOUR INSTALLATION



- 1 Sway Bar
- 2 End Link Assembly
- 3 Frame Bracket and Scarf Plates
- 4 D-Bushing, U-Bolt and Axle Bracket Assembly



CAUTION
Stay Clear of Brake Lines

Hellwig PRODUCTS.com

559-734-7451 800-367-5480 FAX 559-734-7460

SAFETY: BEFORE STARTING YOUR INSTALLATION, BE SURE TO SET PARKING BRAKE AND CHOCK TIRES.

NOTE: TO EASE INSTALLATION AND TO PROPERLY ADJUST THE BAR, THE WEIGHT OF THE VEHICLE MUST BE ON THE SUSPENSION, AS IF DRIVING DOWN THE ROAD. DO NOT RAISE VEHICLE BY THE FRAME.

NOTE: THIS KIT MAY INCLUDE LOCK NUTS WHICH REQUIRES TIGHTENING WITH A WRENCH AFTER BEING STARTED BY HAND.

TORQUE TABLE

BOLT SIZE: 3/8" = 20-30 ft. lbs. – 7/16" = 35-45 ft. lbs. – 1/2" = 50-70 ft. lbs. – 9/16" = 70-90 ft. lbs.-5/8"=120 ft. lbs.

1. Install sway bar over top of rear axle housing as in Photo 1.
2. Lubricate the inside and install D-bushings, Photo 1, on sway bar. Install U-bolts around axle making sure that the U-bolt is under brake line to prevent crushing. Leave nuts loose at this point.
3. Assemble frame mounting of bracket assembly, see Photo 2, on frame of vehicle. **Make sure all wires and lines are clear.**
4. Assemble end link kit, as in illustration.
5. When all component parts are installed, rotate axle brackets to align frame mounting brackets so that the end link is in a near straight up and down position. Tighten all nuts securely.
6. Bounce the vehicle and check for clearance on all undercarriage components. Be sure all nuts and bolts are securely fastened and double nuts used where necessary or provided.
7. Recheck your installation, look for clearance between gas lines, exhaust pipes, brake lines, wiring, etc. After one week of driving check your installation and periodically thereafter.

Maintenance and Inspection:

Your Hellwig Suspension Product is built to last. However, as with all vehicle systems, it requires routine inspection. Inspect your Hellwig installation looking for secure hardware and tight fitting brackets and bushings. If you do not perform this inspection, have your professional mechanic inspect as described.

ATTENTION INSTALLER: BE SURE THE CUSTOMER RECEIVES THIS INSTRUCTION SHEET, ALL IMPORTANT NOTE CARDS, WARNING CARDS AND THE WARRANTY FORM.