

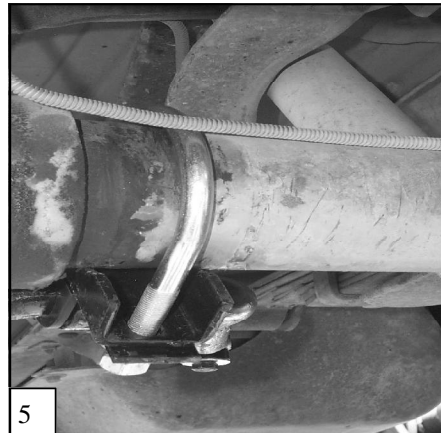
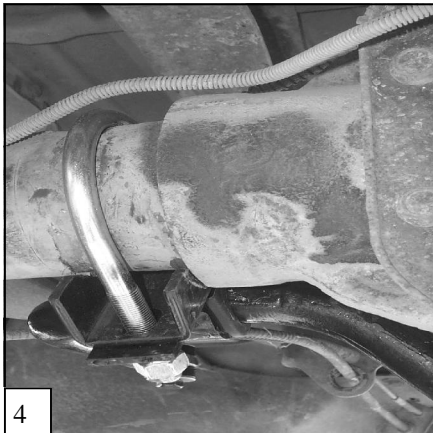
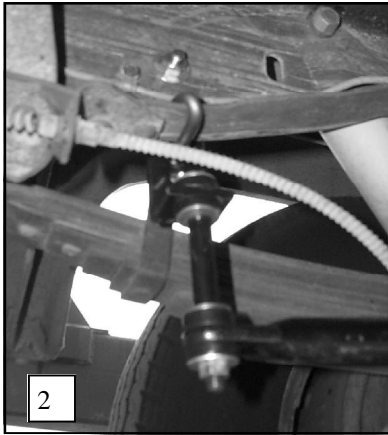
Hellwig PRODUCTS.com

559-734-7451 800-367-5480 FAX 559-734-7460

INSTALLATION INSTRUCTIONS REAR STABILIZER BAR 87-96 F-150 2WD & 4WD

Thank you for purchasing a quality Hellwig Product.

PLEASE READ THIS INSTRUCTION SHEET COMPLETELY BEFORE STARTING YOUR INSTALLATION



Hellwig PRODUCTS.com

559-734-7451 800-367-5480 FAX 559-734-7460

TORQUE TABLE

BOLT SIZE: 3/8" = 20-30 ft. lbs. - 7/16" = 35-45 ft. lbs. - 1/2" = 50-70 ft. lbs. - 9/16" = 70-90 ft. lbs.

SAFETY: BEFORE STARTING YOUR INSTALLATION, BE SURE TO SET PARKING BRAKE AND CHOCK TIRES.

NOTE: TO EASE INSTALLATION AND TO PROPERLY ADJUST THE BAR, THE WEIGHT OF THE VEHICLE MUST BE ON THE SUSPENSION, AS IF DRIVING DOWN THE ROAD. DO NOT RAISE VEHICLE BY THE FRAME.

NOTE: THIS SWAY BAR IS DESIGNED TO MOUNT BELOW THE AXLE TUBES WITH THE ARMS OF THE SWAY BAR FACING TOWARDS THE FRONT OF THE VEHICLE.

NOTE: IN SOME APPLICATIONS IT MAY BE NECESSARY TO REVERSE THE MOUNTING OF THE SWAY BAR TO ALLOW FOR THE BEST FIT FOR YOUR PARTICULAR VEHICLE.

NOTE: THIS KIT INCLUDES LOCK NUTS WHICH REQUIRE TIGHTENING WITH A WRENCH AFTER BEING STARTED BY HAND.

1. Install the D-shaped poly bushings on the sway bar between the center hump and the arms of the sway bar.
2. Position the sway bar on the rear axle . SEE PHOTO ONE (1).
3. Install the U-bolts over the axle tubes with the legs pointing towards the front of the vehicle. Position the saddle brackets over the legs of the U-bolts. The saddle brackets will be in front of the rear axle. Position the sway bar on the rear axle align the D-bushings to match the U-bolts and saddle brackets on the axle assy. Install the U-plates over the D-bushings and fasten with mounting hardware provided. **Leave loose at this time to allow for adjustment later.** (Make sure that the U-bolts are under the brake lines on the axle). SEE PHOTOS FOUR (4) AND FIVE (5).
4. Locate the hole on the trucks frame just behind the forward spring hanger on both sides. SEE PHOTO TWO (2) AND THREE (3). Install the angle frame brackets using the (1/2" x 1-1/2") cap screw and mounting hardware provided. The J-bolt will hook the lower lip of the frame and extend through the second hole on frame brackets.
5. Assemble the end link assemblies and attach to the brackets attached to the frame. Tighten until the bushings begin to bulge slightly. **Do not over tighten our damage will result to the end link bushings.**
6. Raise the sway bar arms up to the end links and finish assembling the end links. Rotate the sway bar on the axle to be centered and level with the ground and so the end links are straight up and down as possible. There should be no less than (1/4") clearance on the differential housing and the hump of the sway bar.
7. Once the sway bar has been centered and the end links are straight up and down as possible torque all the mounting hardware to the specified rate.
8. Bounce the vehicle checking for clearance on all under carriage components. Be sure all nuts and bolts are securely tightened and double nuts are used where provided.
9. Recheck your installation, look for clearance on wiring, exhaust, fuel and brake lines etc.. After one week of driving recheck your installation readjust if necessary. Recheck on a monthly regular basis thereafter.

ATTENTION INSTALLER: BE SURE THAT THE CUSTOMER RECEIVES THIS INSTRUCTION SHEET, ALL IMPORTANT NOTE CARDS AND THE WARRANTY FORM .