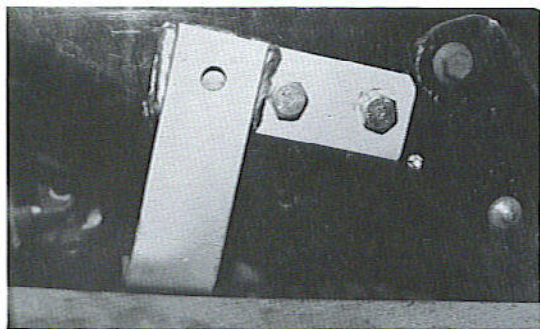
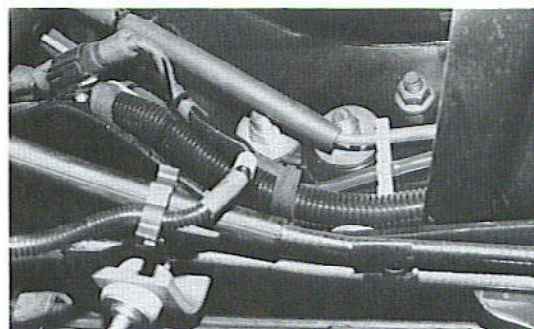


HELLWIG INSTALLATION INSTRUCTIONS



1

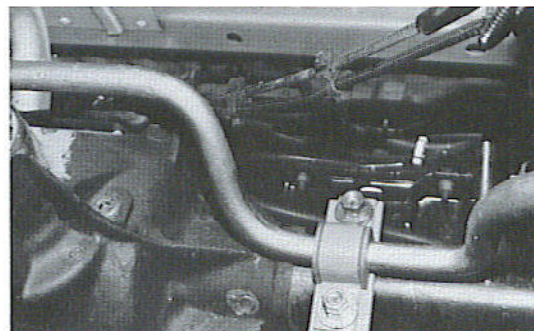
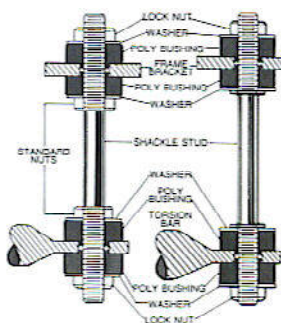


2

CAUTION
Stay Clear of Brake Lines



3



4

1. As in Photos 1 and 2, install the left and right frame brackets just behind the spring eye front hanger. Note the large flat washers used on the inside of the frame rail, Photo 2. Be sure all wires, fluid lines and cables are clear of these washers and cannot be crushed or damaged upon tightening. At this point just tighten by hand.
2. Place the anti-sway bar over the axle and in front of the anti-lock brake system wiring. Assemble the axle hardware and bushings to the bar and axle as shown in Photo 4. Leave loose at this point. Be sure all brake lines are clear and cannot be crushed when U-bolts and nuts are tightened.
3. Install the shackle as shown in Photo 3 and line drawings. Be sure you do not overtighten the self locking nuts. Tighten just until the bushings begin to bulge slightly, (approximately 1/16").
4. Align the shackle in a vertical position by adjusting the anti-sway bar on axle by rotating and sliding on the axle.
5. Tighten the axle U-bolts to 60 ft. lbs. torque and double nut. Next tighten the frame bolts to 50 ft. lbs. torque, watching for clearance of all wiring, fluid lines, etc.
6. Recheck all aspects of your installation. Are U-bolts double nuted? Is all wiring clear and cannot be damaged by the vehicles normal suspension travel? Bounce the vehicle, watch for clearance on all undercomponents, exhaust pipes, brake cables, wires, fuel lines, and shocks.
7. Recheck the installation after one week of driving and every thirty days thereafter. Be sure all nuts and bolts are tight and have not interfered with any undercarriage components.

INSTALLER: PLEASE BE SURE YOUR CUSTOMER RECEIVES THESE INSTRUCTIONS.

KIT-7558

FACTORY AND GENERAL SERVICES

• 16237 AVENUE 296, VISALIA, CALIFORNIA 93291

Form No. R-273

• (209) 734-7451