

24 Toyota Tacoma Crew Cab Raptor Style Step Kit

Thank you for choosing Rough Country for all your vehicle needs.

Please read instructions before beginning installation. Check the kit hardware against the kit contents shown below. Be sure you have all needed parts and know where they go.

If question exist, please call us @1-800-222-7023. We will be happy to answer any questions concerning this product.

Check all fasteners for proper torque. Check to ensure for adequate clearance between all components.

Periodically check all hardware for tightness.

KIT CONTENTS:

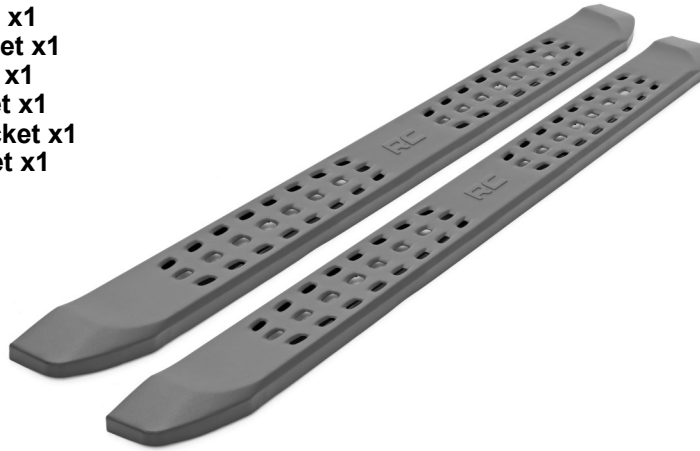
- Driver Side Step Rail x1
- Pass Side Step Rail x1
- Dr Fr Bracket x1
- Dr Center Bracket x1
- Dr Rr Bracket x1
- Pass Fr bracket x1
- Pass Center Bracket x1
- Pass Rr Bracket x1

TOOLS NEEDED:

- 10mm Wrench or Socket
- 13mm Wrench or Socket

HARDWARE INCLUDED:

- 6mm Flag Bolt x6
- 6mm Flat Washer x12
- 6mm Lock Nut x12
- 8mm x 30mm Hex Bolt x12
- 8mm Lock Washer x12
- 8mm flat Washer x12

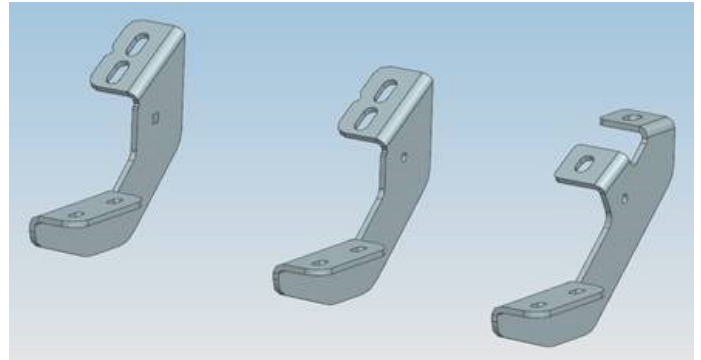
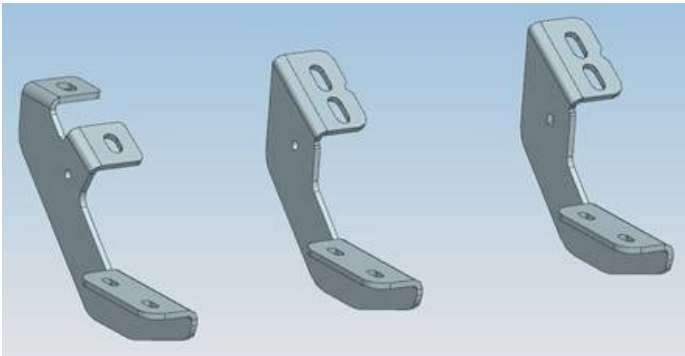


← Front

Driver Side

Passenger Side

Front →



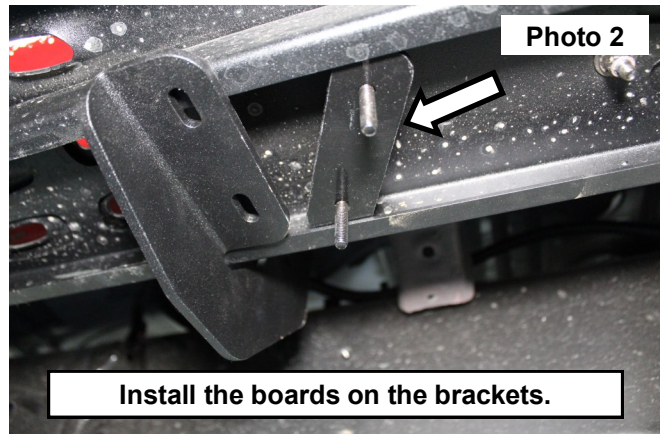
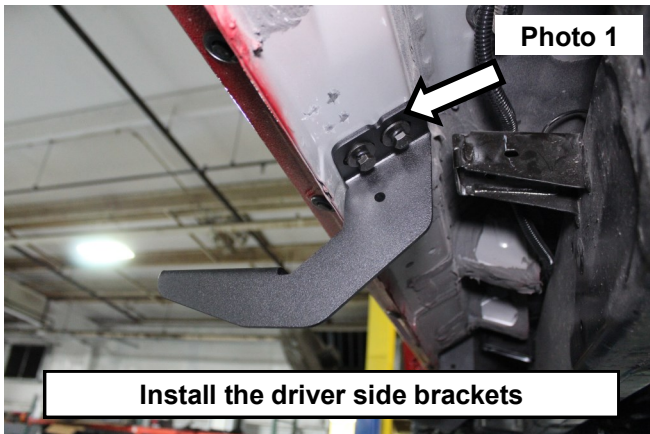
Torque Specs:

Size	Grade 5	Grade 8	Size	Class 8.8	Class 10.9
5/16"	15 ft/lbs	20ft/lbs	6MM	5ft/lbs	9ft/lbs
3/8"	30 ft/lbs	35ft/lbs	8MM	18ft/lbs	23ft/lbs
7/16"	45 ft/lbs	60ft/lbs	10MM	32ft/lbs	45ft/lbs
1/2"	65 ft/lbs	90ft/lbs	12MM	55ft/lbs	75ft/lbs
9/16"	95 ft/lbs	130ft/lbs	14MM	85ft/lbs	120ft/lbs
5/8"	135ft/lbs	175ft/lbs	16MM	130ft/lbs	165ft/lbs
3/4"	185ft/lbs	280ft/lbs	18MM	170ft/lbs	240ft/lbs

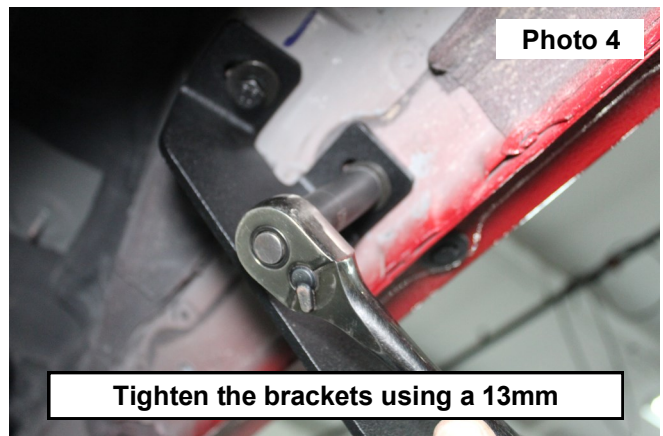
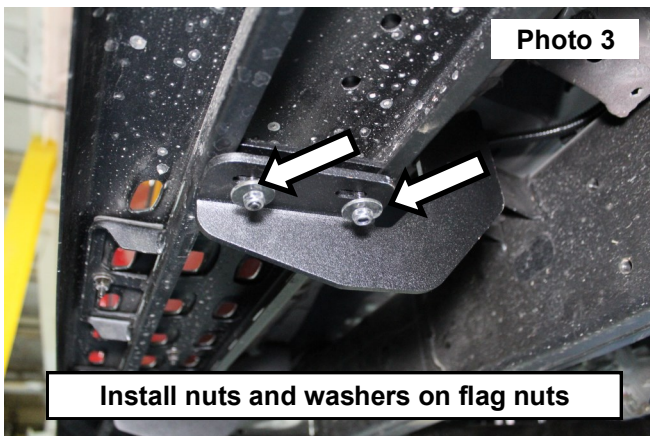


INSTALLATION INSTRUCTIONS

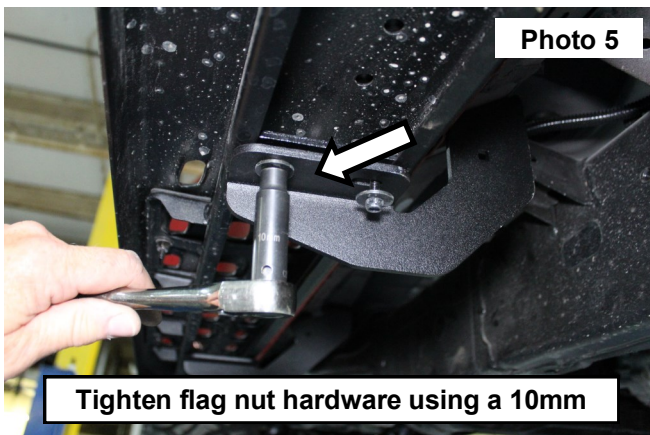
1. Locate the (3) step brackets for the drivers side of the vehicle using the diagram on Page 1.
2. Install driver side brackets in the stock location using the 8mm bolts, flat washers and lock washers. Do not fully tighten at this time. **See Photo 1.**
3. Place the step board on the brackets and install the (3) flag nuts into the board. **See Photo 2.**



4. Secure the flag nuts to the step brackets with the supplied 6mm nuts and flat washers. **See Photo 3.**
5. Tighten the bolts securing the brackets to the body using 13mm socket / wrench and then the bolts securing the boards to the brackets using a 10mm socket / wrench. **See Photo 4 & 5.**



6. After completing the installation on the Driver side, proceed to the passenger side and repeat installation.



7. Periodically check hardware to ensure it is tight.

By purchasing any item sold by Rough Country, LLC, the buyer expressly warrants that he/she is in compliance with all applicable, State, and Local laws and regulations regarding the purchase, ownership, and use of the item. It shall be the buyers responsibility to comply with all Federal, State and Local laws governing the sales of any items listed, illustrated or sold. The buyer expressly agrees to indemnify and hold harmless Rough Country, LLC for all claims resulting directly or indirectly from the purchase, ownership, or use of the items.

