

ROUGH COUNTRY

SUSPENSION SYSTEMS®



WARNING: This product contains a chemical known to the State of California to cause Cancer and Reproductive Harm. For more information, go to www.P65Warnings.ca.gov.

2007-2018 JEEP JK ROCKER SILL PLATES

PRIOR TO INSTALLATION

- A) Install the parts according to these written instructions with the hardware provided. **WARNING:** Failure to install according to these instructions will invalidate the warranty. This includes, but is not limited to, using alternative installation methods, hardware, or materials. **DO NOT USE:** Loctite, Superglue, or similar products on the hardware or the flares. *Install parts on cleaned vehicle surfaces.*
- B) **Fit:** Verify the fit of the parts to vehicle prior to installation (some filing, sanding, or cutting may be necessary to ensure proper fit).
- C) **Painting:** (Optional) if paint is desired it must be done prior to installing parts on vehicle. Clean outer surface with a good grade degreaser. **DO NOT USE LACQUER THINNER OR ENAMEL REDUCER AS A DEGREASER.** Wipe outer surface thoroughly with a tack rag prior to paint. Application of plastic adhesion promoter for TPO plastic as per your paint system manufacturer's recommendations is required. Paint parts using a high-quality enamel, or polyurethane automotive paint.
- D) **Metal Protection:** All exposed fasteners and bare metal should be treated with rust resistant paint **BEFORE** installing parts
- E) **Decals:** Parts may interfere with existing decals on vehicle. If you wish, remove decals prior to installation of parts.
- F) **Care & Cleaning:** Parts are built to last; any detergent you use to wash your vehicle is sufficient to clean the part. Do not use any harsh abrasive detergents.

TOOLS FOR EASY INSTALLATION:

- Soft Cloth or Alcohol Wipe
- #2 Philips Screwdriver

PLEASE READ: Dirt and debris can become lodged between the parts and the vehicle's surface, causing scratching and paint wear from vibration. Manufacturer is not responsible for any damage, and the installation of our parts is done with the buyer's understanding that this scratching and paint wear may occur.

LIMITED LIFETIME WARRANTY AGAINST ANY MANUFACTURING DEFECTS: To claim warranty you must provide Proof of Purchase.

INCLUDED IN HARDWARE KIT:

1.



"U" Clip
12 pcs

2.



#10 Screw
12 pcs

3.

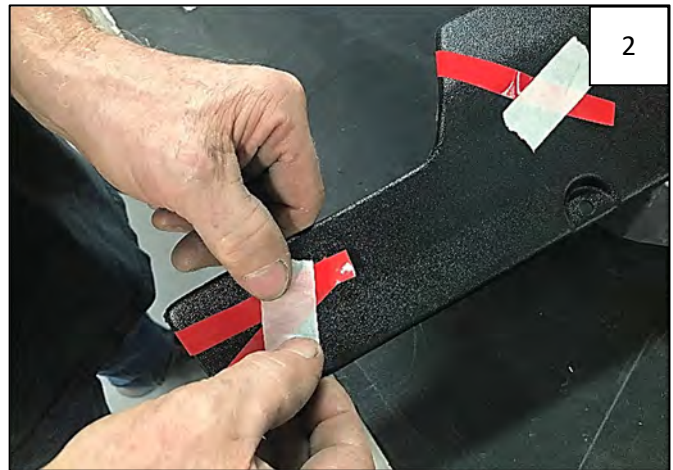


Alcohol Wipe
6 pcs

SECTION 1: ROCKER SILL PLATE INSTALLATION



Open vehicle doors and use supplied alcohol wipe to clean sill at areas of tape. Alternately: **Clean area with alcohol or degreaser.**



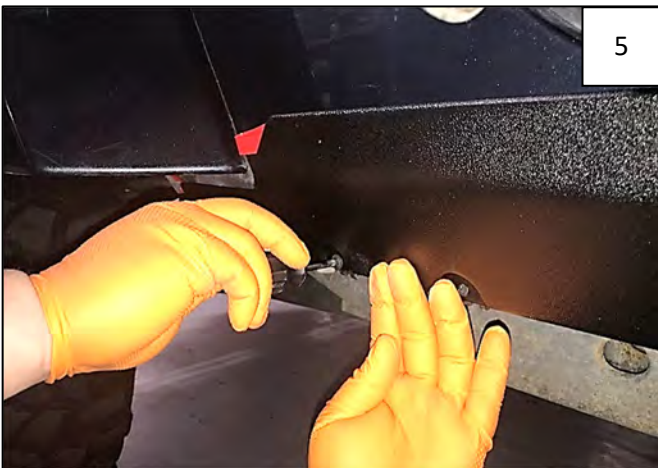
Before you begin, peel 2-3 inches of red leader from each piece of tape. Fold all tape leaders out and use masking tape to tape them to the outside of the part, for accessibility when installing. NOTE: For long pieces of tape, it's good to peel 2-3 inches from each end.



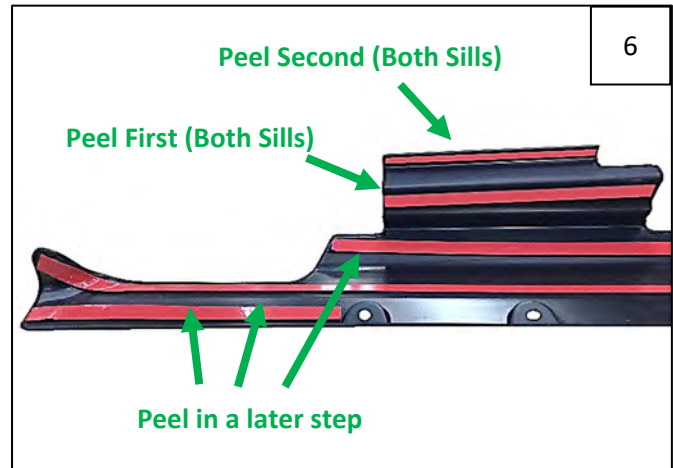
Install 6 supplied "U" Clips in pairs along pinch weld.



6 Clip Locations.



Hold part in place on door sill, and install 1 supplied #10 screw into frontmost clip installed in Step 3. This will help hold the part in place – do not tighten.



Peel tape from each door sill area only in order numbered above (at either end). Carefully pull red tape leader at a 45-degree angle away from part into interior of vehicle to release from the tape, pressing against part as you go.



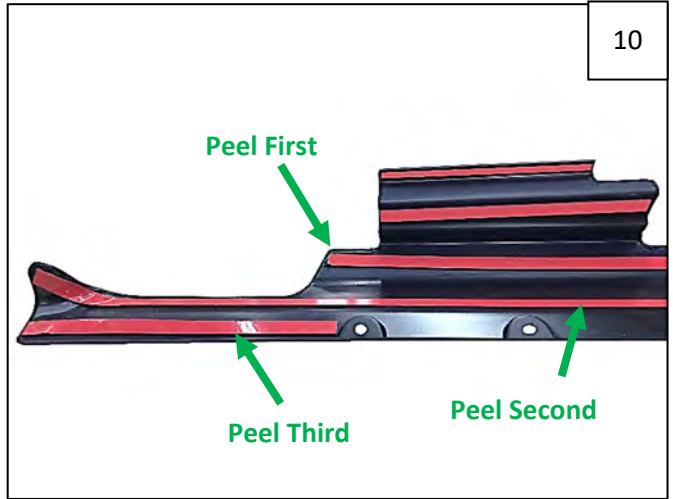
After pulling a few inches, press part firmly at area of tape before proceeding, to maintain position.



Repeat for other tape leader from door sill area as shown in Step 6. Do not peel tape from underside of part yet. Press part against vehicle in both sill areas.



Remove 1 screw installed in Step 5.



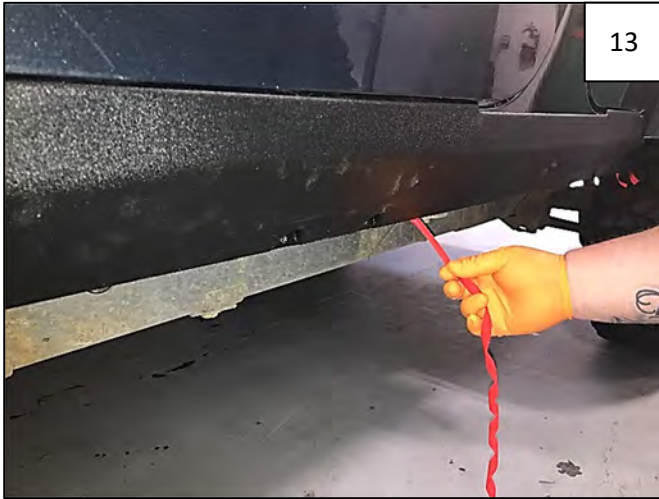
Peel next batch of tape leaders in order shown.



Starting with tape leader marked #1 in Step 10, carefully pull red tape leader at a 45 degree angle down and away from part to release from the tape, pressing against part as you go.



After pulling a few inches, press part firmly at area of tape before proceeding, to maintain position.



13

Repeat for other tape leaders in order shown in Step 10. After pulling a few inches, press part firmly at area of tape before proceeding, to maintain position.



14

Press part against vehicle at areas of tape for 30 seconds to ensure full adhesion. Tape cures after 24 hours at 65 degrees. Curing will take longer in colder temperatures.



15

Install 6 supplied #10 Screws through part and into clips installed in Step 3.



16

Complete Rocker Sill Plate Installation.