

advanced FLOW engineering Magnum FORCE Stage-2 Si Cold Air Intake System

Instruction Manual P/N: 51-81012-C / 54-81012-C / 51-81012-B / 54-81012-B

Make: **BMW** Model: 325i (E90/91) Year: 2006 Engine: L6-3.0L Non-Turbo (N52)

Make: **BMW** Model: 330i (E90/91/92/93) Year: 2006 Engine: L6-3.0L Non-Turbo (N52)

Make: **BMW** Model: 328i (E90/91/92/93) Year: 2007-2013 Engine: L6-3.0L Non-Turbo (N52)

Note: Excluding 328i (E90/91/92/93) 07-13 LEV2 SULEV Engine Test Groups
7BMXV03.0N51, 8BMXV03.0N51, 9BMXV03.0N51, ABMXV03.051R, BBMXV03.051R,
CBMXV03.0N51R, & DBMXV03.051R

Make: **BMW** Model: 128i (E82/88) Year: 2008-2013 Engine: L6-3.0L Non-Turbo (N52)

Note: Excluding 128i (E82/88) 08-13 LEV2 SULEV Engine Test Groups 8BMXV03.0N51,
9BMXV03.0N51, ABMXV03.051R, BBMXV03.051R, CBMXV03.0N51R, & DBMXV03.051R



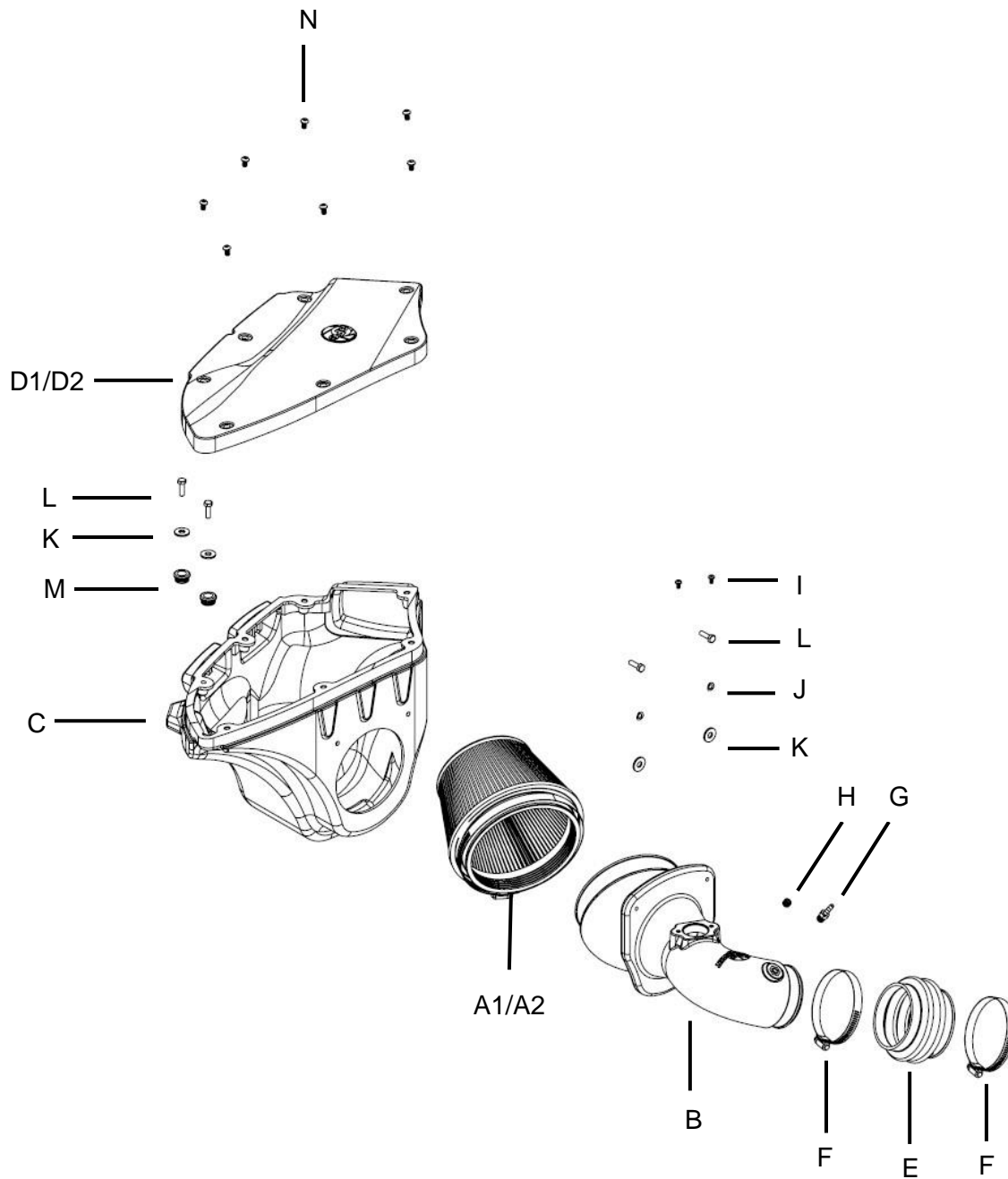
- Please read the entire instruction manual before proceeding.
- Ensure all components listed are present.
- For technical support please call at 951-493-7185.
- Ensure you have all necessary tools before proceeding.
- Do not attempt to work on your vehicle when the engine is hot.
- Retain factory parts for future use.

Label	Qty.	Description	Part Number
A1	1	Air Filter (Pro DRY S)	21-91054
A2	1	Air Filter (Pro 5R)	24-91054
B	1	Tube	05-81012B5
C	1	Housing	05-81012B2
D1	1	Cover, Black (51/54-81012-B only)	05-81012B3
D2	1	Cover, Carbon Fiber Look (51/54-81012-C only)	05-81012C3
E	1	Coupling, Silicone Bellow: 3.1"ID x 3"L	05-01542
F	2	Clamp, #048	03-50007
G	1	Fitting, Brass: 1/8-NPT	03-50191
H	1	Plug, Brass: 1/8-NPT	03-50410
I	2	Screw: M4	03-50490
J	2	Washer, Lock: M6	03-50071
K	4	Washer, Flat: M6	03-50070
L	4	Screw, Hex: M6	03-50052
M	2	Grommet	03-50033
N	7	Screw, Button Head: 5/16"	03-50259

Installation will require the following tools:

6mm, 8mm, and 10mm nut drivers or sockets, socket wrench, flat-head screwdriver, and panel popper.

Warranty Information available at <https://afepower.com/contact#warranty>



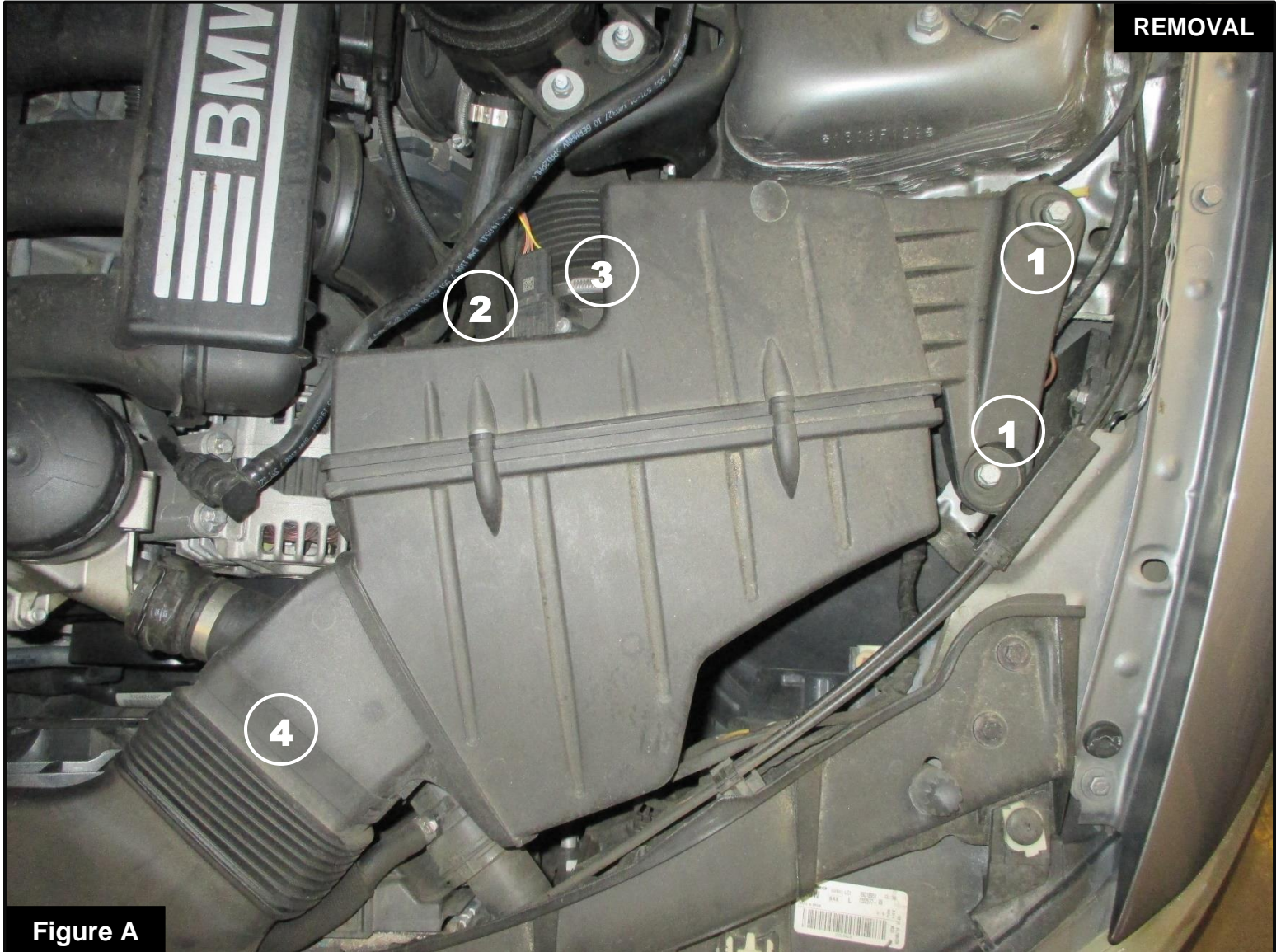


Figure A

Refer to Figure A for Steps 1-5

Step 1: Remove the two (2) factory bolts and keep for later use (1).

Step 2: Disconnect the MAF sensor harness (2).

Step 3: Using a 6mm nut driver, loosen the hose clamp at the factory airbox (3). Then, slide the factory intake tube away from the factory airbox.

Step 4: Pull the factory airbox away from the factory air duct (4).

Step 5: To remove the factory airbox, carefully pull up and away from the engine bay. Be careful to not lose the factory dome grommet sitting between the chassis and factory airbox.

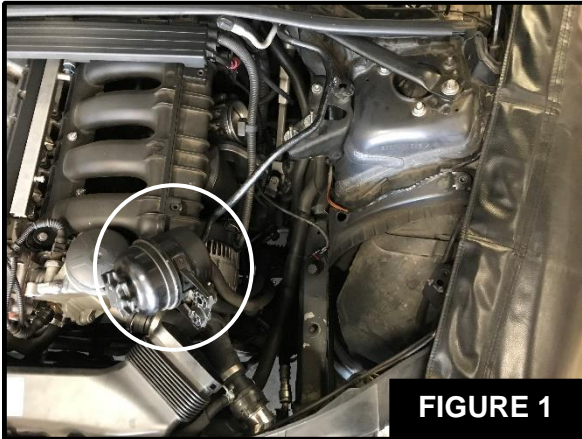


FIGURE 1



Figure B

Refer to Figure B for Steps 6-8

Step 6: For vehicles with the steering pump located above the factory intake tube, remove the two (2) factory nuts and keep for later use (5).

Step 7: Detach the factory air line from the reservoir's bracket (6).

Step 8: Carefully move the steering pump reservoir to the front of the engine, to allow for clearance. See Figure 1.

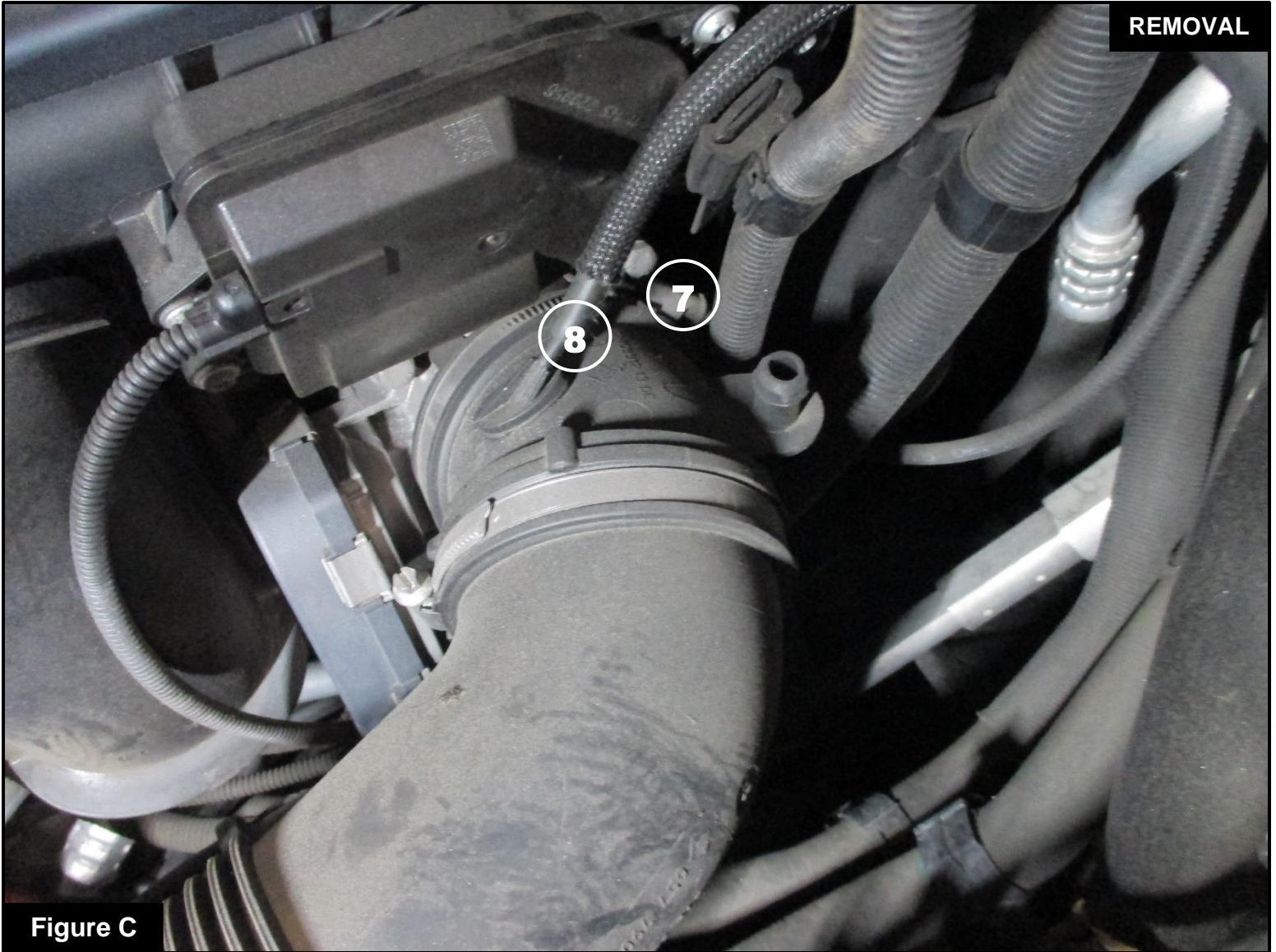


Figure C

Refer to Figure C for Steps 9-11

Step 9: Using a 6mm nut driver, loosen the clamp at the throttle body (7).

Step 10: For vehicles with a crankcase breather (CCV) hose, detach the CCV hose from the factory intake tube (8).

Step 11: Carefully remove the factory intake tube from the vehicle.



Refer to Figure D for Steps 12-14

Step 12: Transfer the MAF sensor from the factory airbox to the aFe Power intake tube (9) and attach with the supplied M4 screws.

Step 13: For vehicles with a CCV hose, install the supplied NPT fitting into the aFe Power intake tube (10).

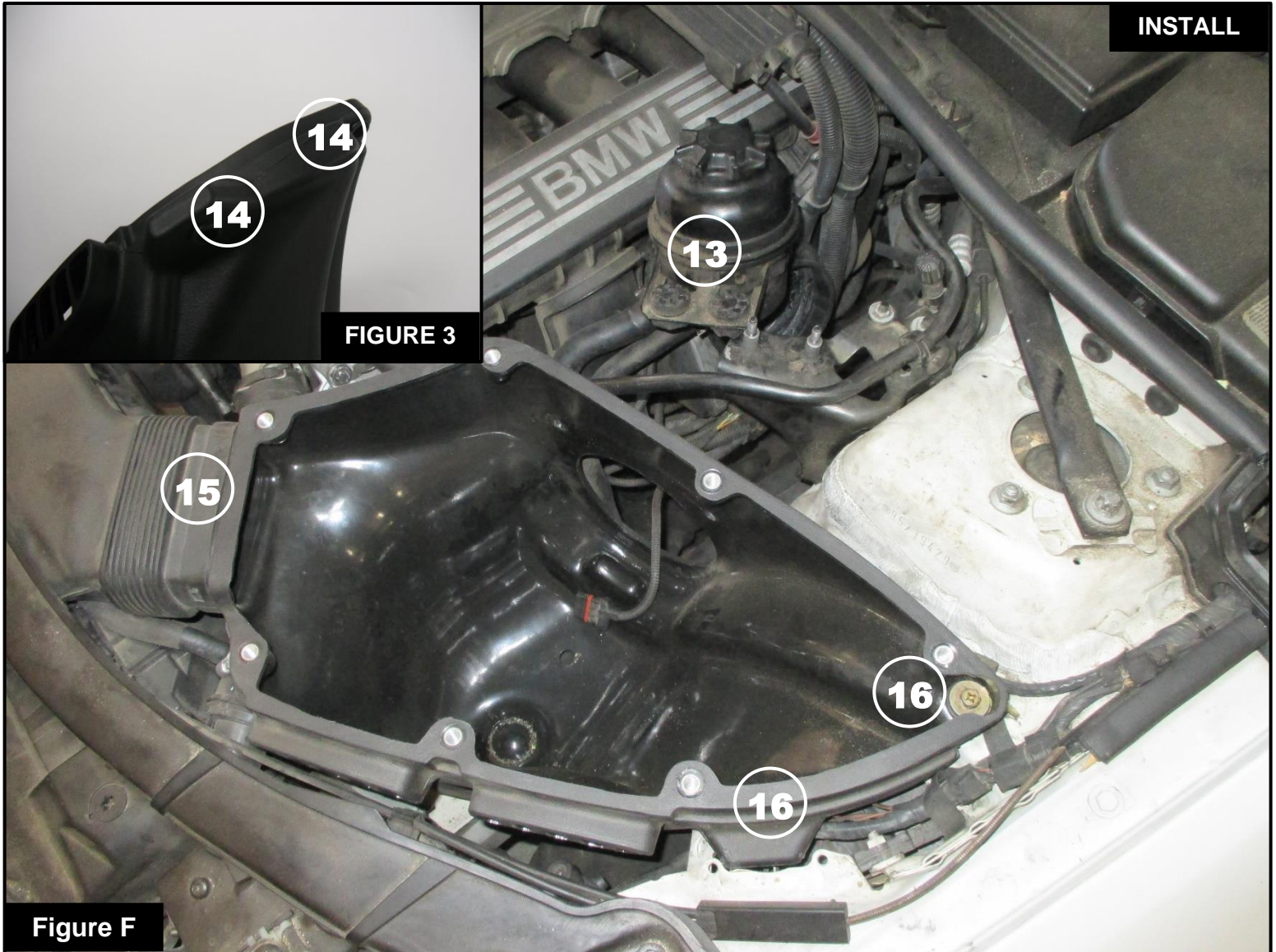
Step 14: For vehicles without a CCV hose, install the supplied NPT plug into the aFe Power intake tube (11).

See Figure 2.

NOTE: There will be a small gap between the tube and the NPT fittings' hex.

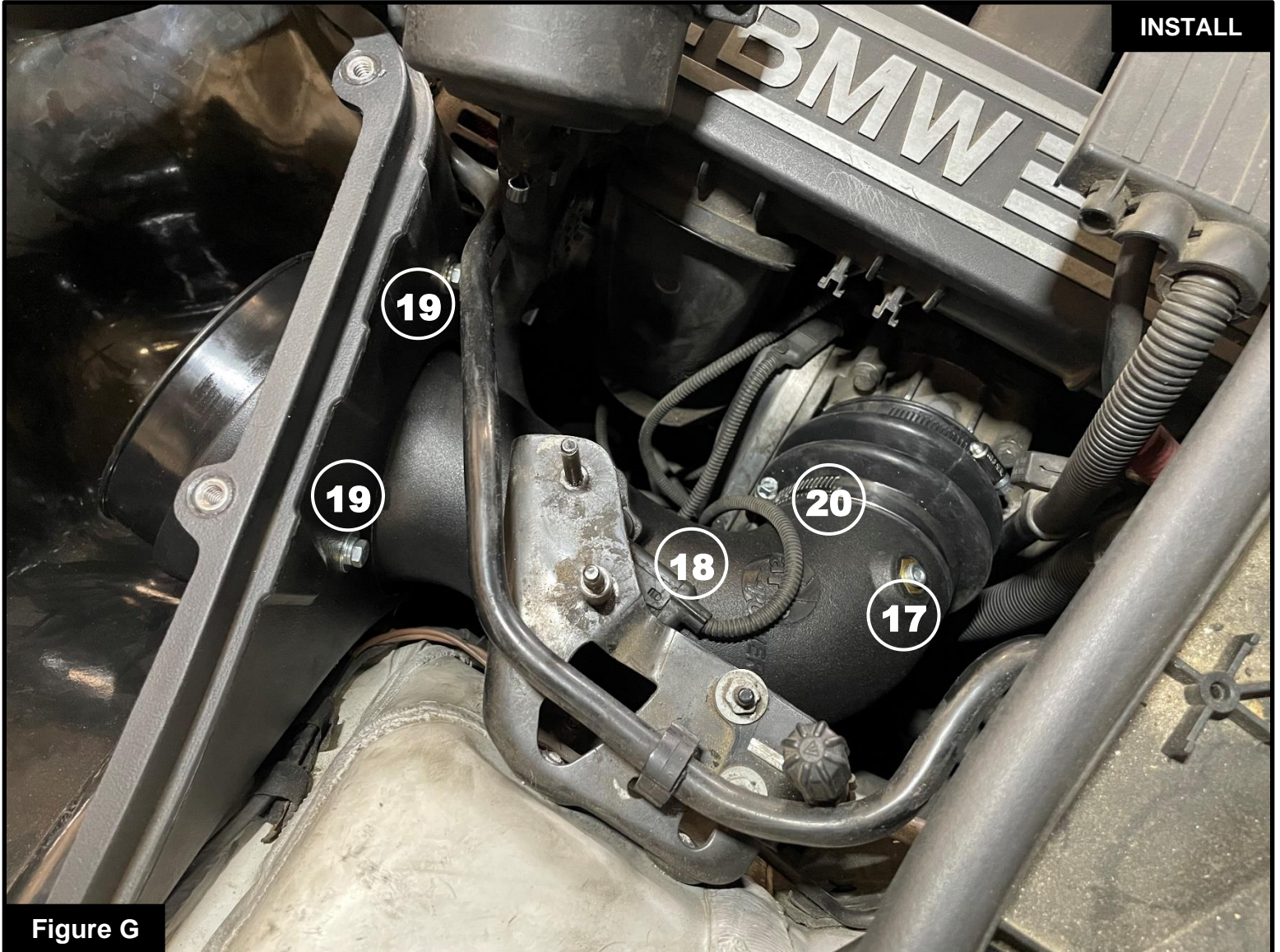
**Figure E****Refer to Figure E for Step 15**

Step 15: Install the coupling onto the throttle body. Adjust the internal bead of the coupling into the groove of the throttle body. Once the coupling is fully seated and can rotate easily, tighten the clamp at the throttle body side (where there is an external bead to locate the clamp) ⑫. Do NOT tighten the clamp at the open end of the coupling.



Refer to Figure F for Steps 16-20

- Step 16: Move the steering pump reservoir toward the back of the engine bay for clearance, but do not re-install onto its bracket yet (13).
- Step 17: Install the two (2) supplied grommets into the aFe Power housing (14). See Figure 3.
- Step 18: Install the aFe Power housing into the vehicle and over the dome grommet from Step 5.
- Step 19: Join the aFe Power housing to the factory air duct (15).
- Step 20: Secure the aFe Power housing to the vehicle with two (2) of the supplied flat washers and hex head M6 screws (16).

**Figure G****Refer to Figure G for Steps 21-26**

Step 21: Carefully, slide the aFe Power intake tube assembly through the aFe Power housing's top opening and into the vehicle.

Step 22: Install the aFe Power intake tube into the coupling. Do NOT tighten the clamp at this time.

Step 23: For vehicles with a CCV hose, connect the CCV hose to the aFe power intake tube (17).

Step 24: Connect the MAF harness to the MAF sensor (18).

Step 25: Secure the aFe Power intake tube to the aFe Power housing with two (2) of the supplied flat and lock washers, and the hex head M6 screws (19).

Step 26: Tighten the clamp between the aFe Power intake tube and coupling (20).



Figure H

Refer to Figure H for Steps 27-29

Step 27: Install the supplied air filter onto the aFe Power intake tube and tighten the clamp.

Step 28: Carefully, place the steering pump reservoir back on its bracket and tighten with the two (2) factory nuts from Step 6(21).

Step 29: Re-seat the factory air line from Step 7 back on the reservoir's bracket(22).



Figure I

Refer to Figure I for Steps 30-31

Step 30: Install the aFe Power cover onto the aFe Power housing using the supplied seven (7) button head screws **23**.

Step 31: Make sure all components and connections are secure. Your installation is now complete. Thank you for choosing aFe Power!

NOTE: Check all bolts, clamps, and connectors after 100-200 miles.

NOTE: Place enclosed CARB EO sticker on a clean/smooth surface on or near the intake system. EO identification label is required in passing the smog check inspection.



Page left blank intentionally.



Page left blank intentionally.



Page left blank intentionally.



advanced FLOW engineering, inc.

252 Granite Street Corona, CA 92879

<https://afepower.com/contact>