

**advanced FLOW engineering** Magnum FORCE Stage-2 Cold Air Intake System

**Instruction Manual** P/N: 54-13017D / 54-13017R

Make: **Ford** Model: **F-250/F-350/F-450/F-550** Year: **2017-2019** Engine: **V8-6.7L (td) Power Stroke**



- Please read the entire instruction manual before proceeding.
- Ensure all components listed are present.
- If you are missing any of the components, call customer support at 951-493-7100.
- Ensure you have all necessary tools before proceeding.
- Do not attempt to work on your vehicle when the engine is hot.
- Disconnect the negative battery terminal before proceeding.
- Retain factory parts for future use.

Label	Qty.	Description	Part Number
A1	1	Air Filter (Pro DRY S)	21-91120
A2	1	Air Filter (Pro 5R)	24-91120
B	1	Tube	05-5413017B1
C	1	Housing	05-5413017B2
D	1	Seal, Trim: 7/16" (34" inches)	05-00072
E	1	Coupling, Silicone Hump	05-01204
F	1	Washer: M6	03-50070
G	2	Screw, Torx: M4	03-50491
H	1	Screw, Hex Hd: M6	03-50057
I	1	Fixing Clamp, 3/4"	03-50234
J	2	Clamp, #072	03-50010
K	1	Plug, Urethane	05-01225

**Installation will require the following tools:**

7mm, 8mm, 10mm, nut driver or socket and extension, T-20 Torx.

Note: Legal in California for use on race vehicles only. The use of this device on vehicles used on public streets or highways is strictly prohibited in California and others states that have adopted California emission regulations.

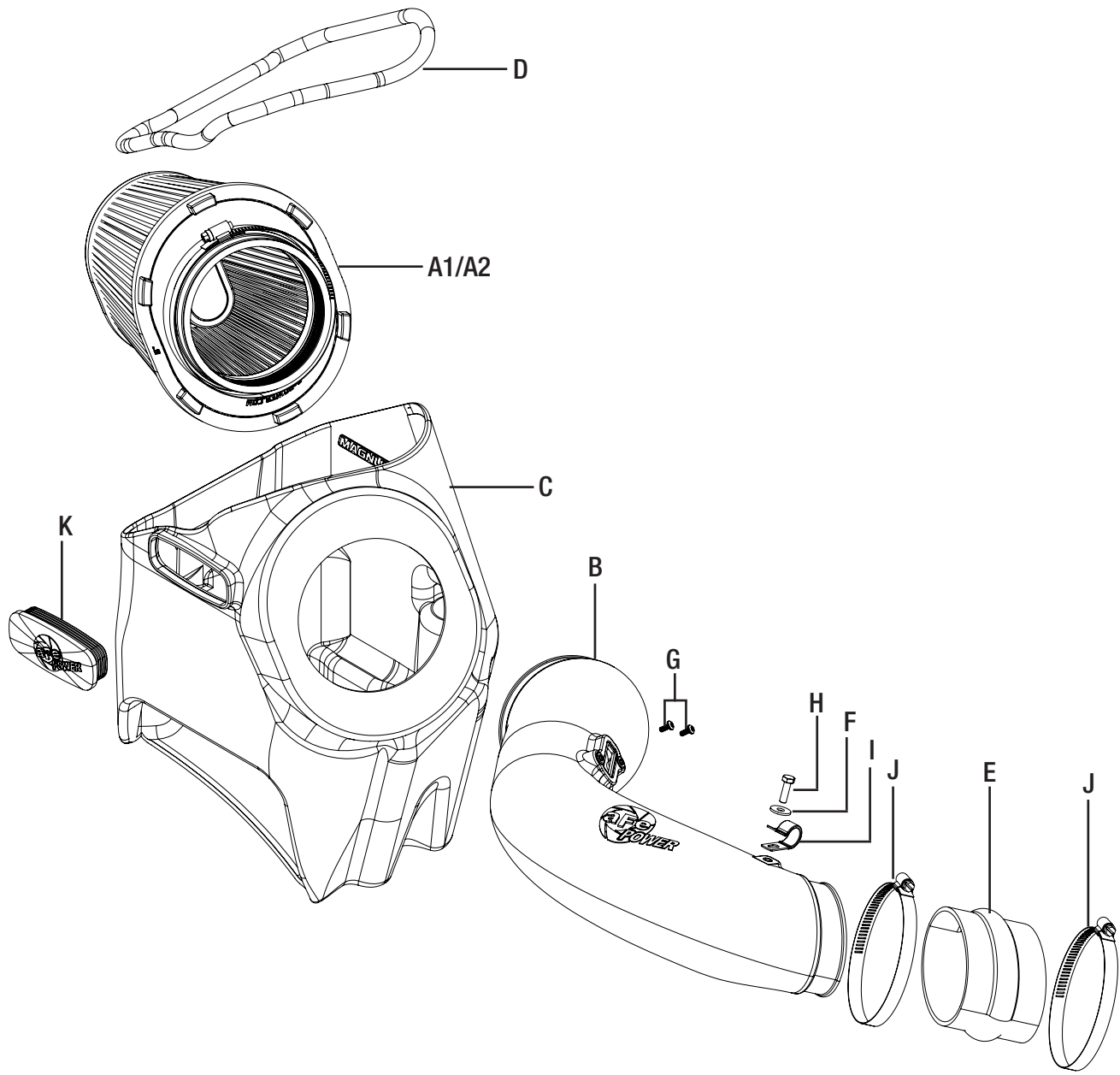




Figure A

**Refer to Figure A for Step 1**

Step 1: Using a 7mm nut driver, loosen the clamps ① at the turbo inlet and the airbox. Remove the hose ② from the intake tube clip and remove the intake tube ③.

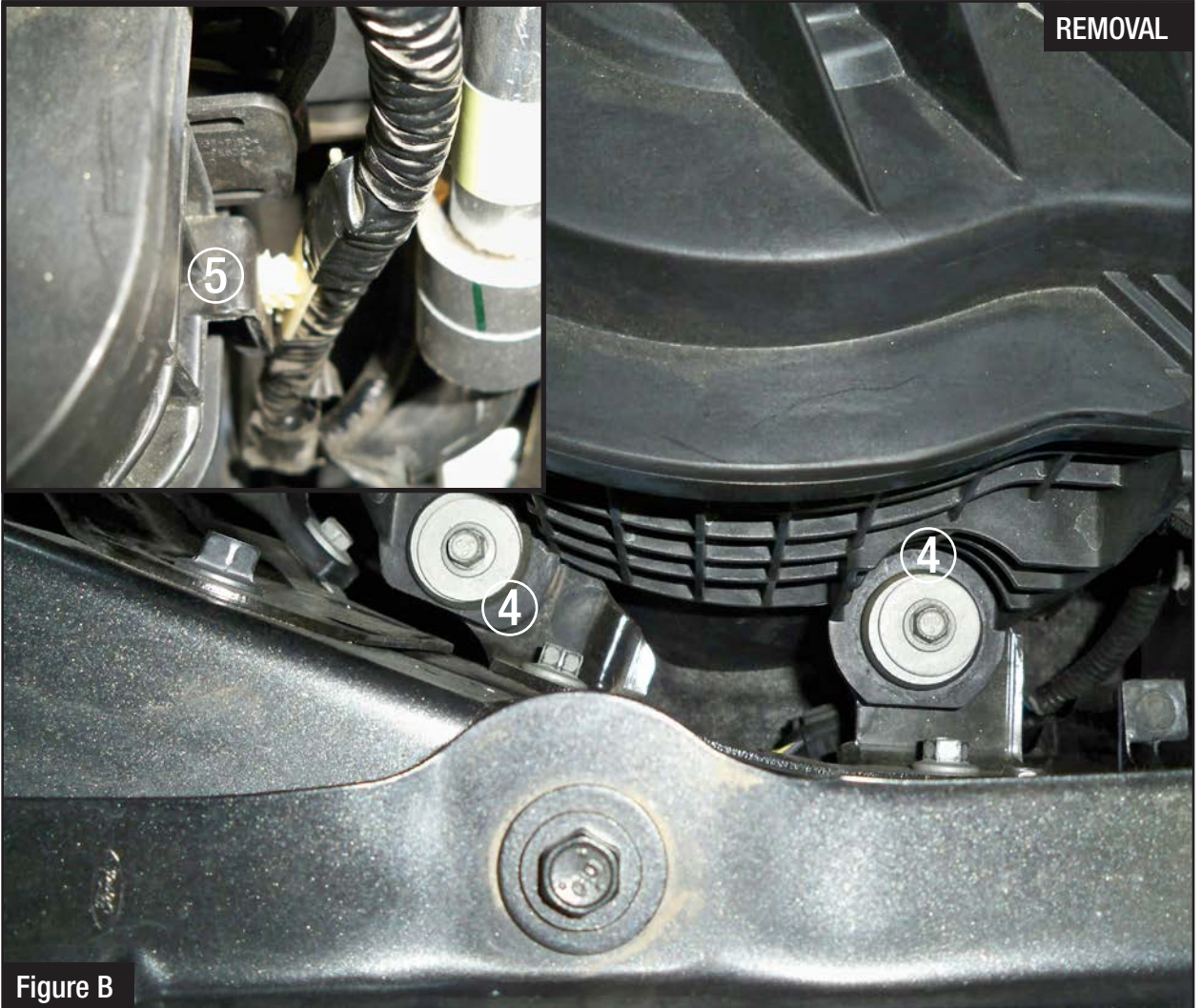


Figure B

**Refer to Figure B for Steps 2-3**

Step 2: Using a 8mm nut driver, remove the two screws (4) securing the airbox to the frame and set them aside for later use.

Step 3: Remove the wire clip (5) attached to the airbox.



Figure C

**Refer to Figure C for Steps 4-5**

Step 4: Slide back the red locking tab on the bottom side of the MAF sensor connector⑥ and then disconnect the sensor.

Step 5: Remove the OE airbox by pulling in an upward motion.

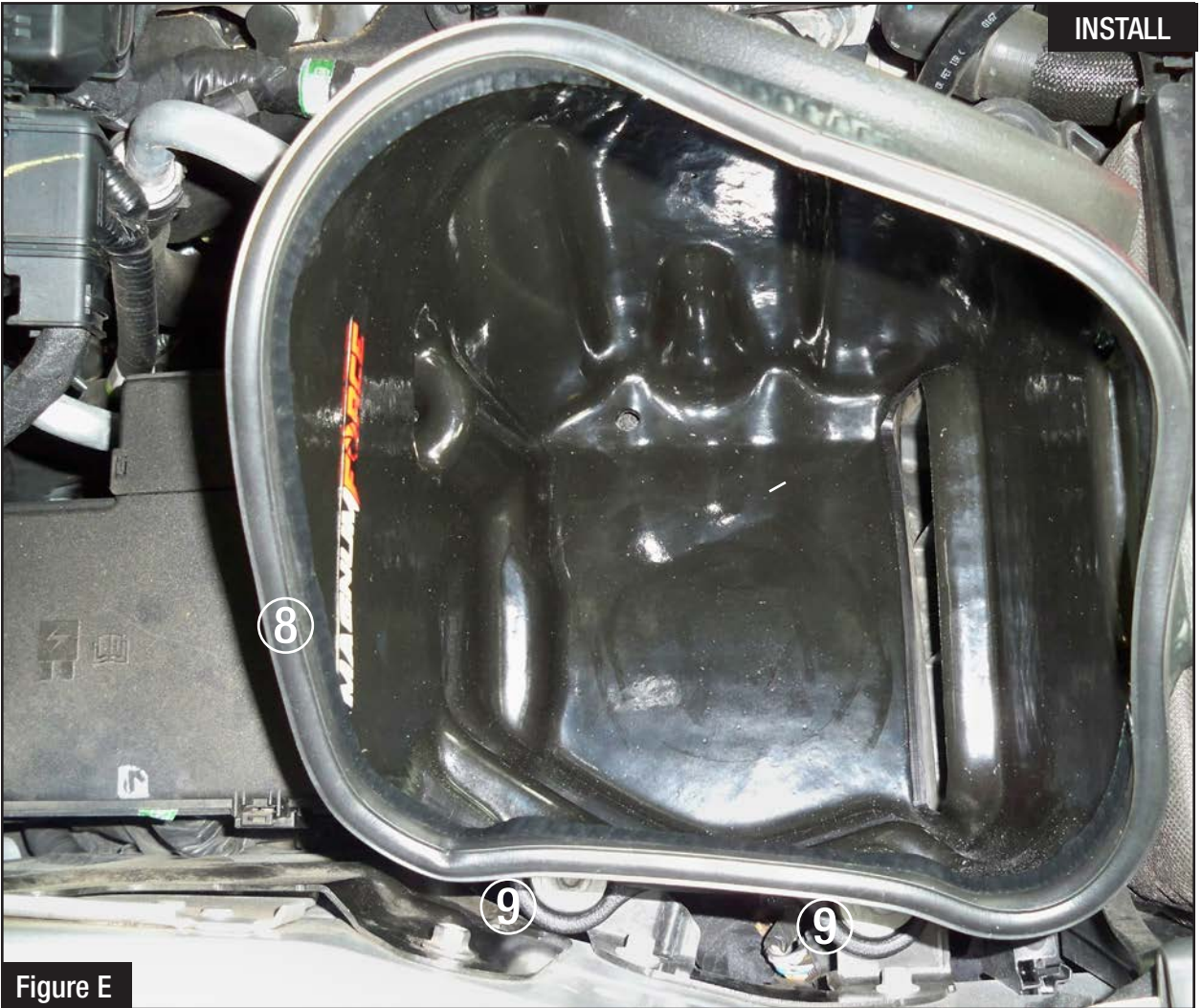
REMOVAL



Figure D

**Refer to Figure D for Step 6**

Step 6: Remove the factory grommets with metal inserts (7) from the OE airbox and install them on the aFe POWER housing.



**Refer to Figure E for Steps 7-8**

Step 7: Install the seal trim (8) on the top opening of the housing as shown.

Step 8: Install the housing assembly into the vehicle by pushing it in to the factory grommet. Secure the housing assembly with the two screws (9) removed in Step 2. Tighten both screws





Figure F

### **Refer to Figure F for Step 9**

Step 9: Remove the filter clamp from the aFe filter. Slide the aFe filter into the aFe housing from the top. Then guide the filter flange through the round opening in the housing and snap in the filter. Place the filter clamp on the filter flange.

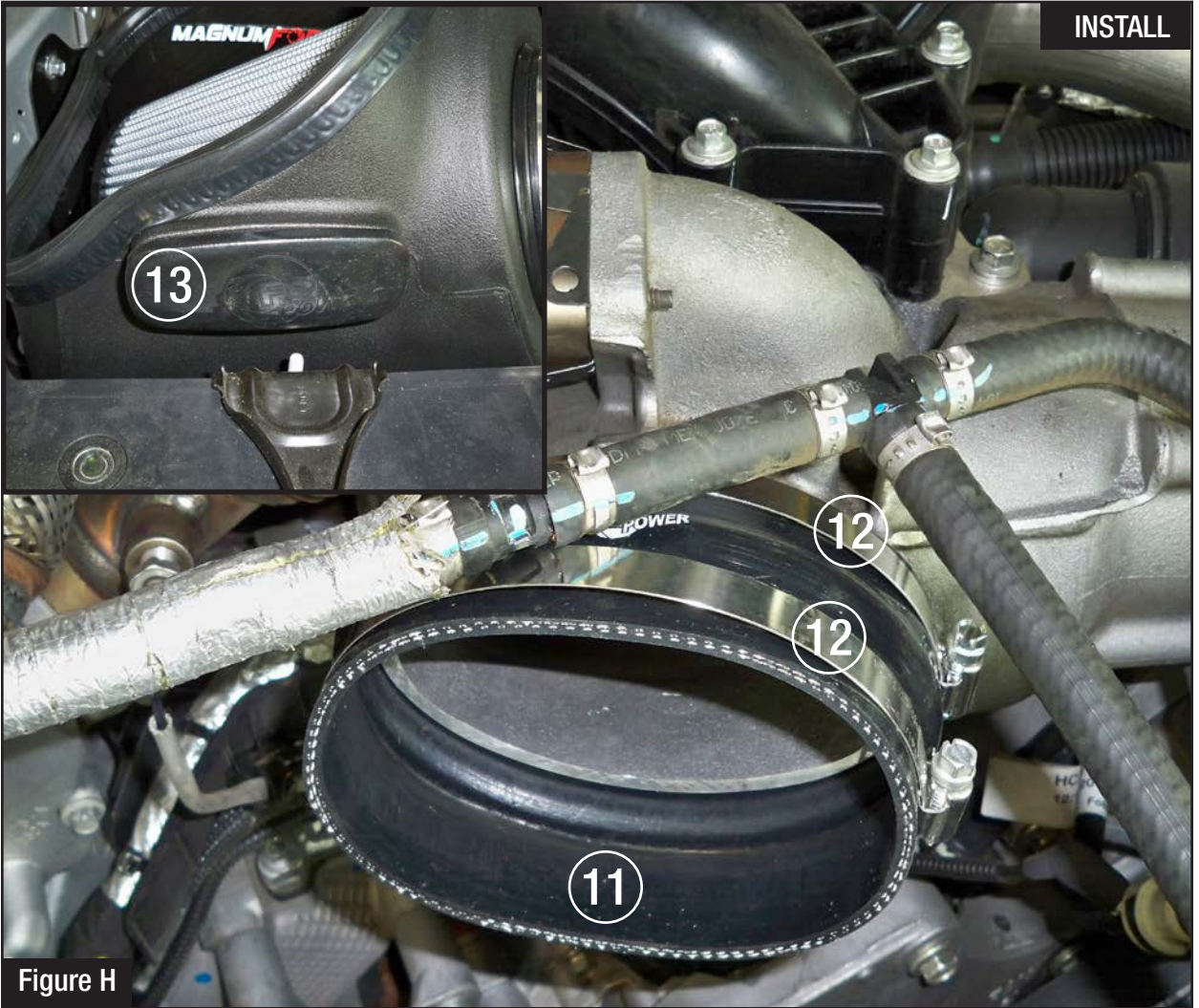


Figure G

**Refer to Figure G for Steps 10-11**

Step 10: Using a T20 Torx driver, remove the MAF sensor (10) from the OE airbox.

Step 11: Install the MAF sensor in the aFe intake tube using the provided M4 screws and a T20 Torx driver



### **Refer to Figure H for Steps 12-14**

Step 12: Slide the supplied hump coupling (11) over the turbo inlet.

Step 13: Place the two provided #72 clamps (12) onto the hump coupling.

Step 14: Install the urethane plug (13) into the airbox unless the optional aFe air scoop (54-73006-S) is being install.

**Figure I****Refer to Figure I for Steps 15-17**

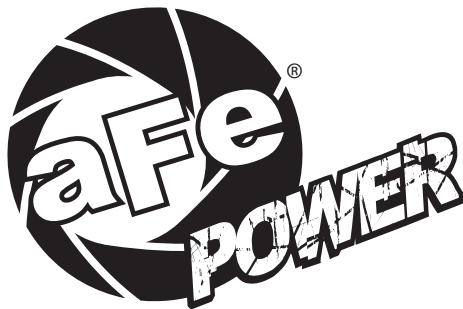
Step 15: Slide the aFe intake tube into the filter, then install the intake tube into the coupling at the turbo inlet. Tighten all the clamps with an 8mm nut driver.

Step 16: Reconnect the MAF sensor (14) .

Step 17: Secure the hose to the tube with the provided fixing clamp, 6mm screw and washer (15). Using a 10mm nut driver, tighten the screw. Check all the components are tight and secure. Your installation is now complete. Thank you for choosing aFe POWER.

**NOTE: Check all bolts, clamps, and connectors after 100-200 miles.**

Page left blank intentionally



**advanced FLOW engineering, inc.**  
252 Granite Street Corona, CA 92879  
TEL: 951.493.7100 • TECH: 951.493.7134  
E-Mail: [Tech@aFepower.com](mailto:Tech@aFepower.com)