

advanced FLOW engineering Magnum Force Stage-2
Instruction Manual P/N: 54-12742 / 51-12742

Make: FORD

Model: F-150

Year: 2015-2020

Engine: V8-5.0L



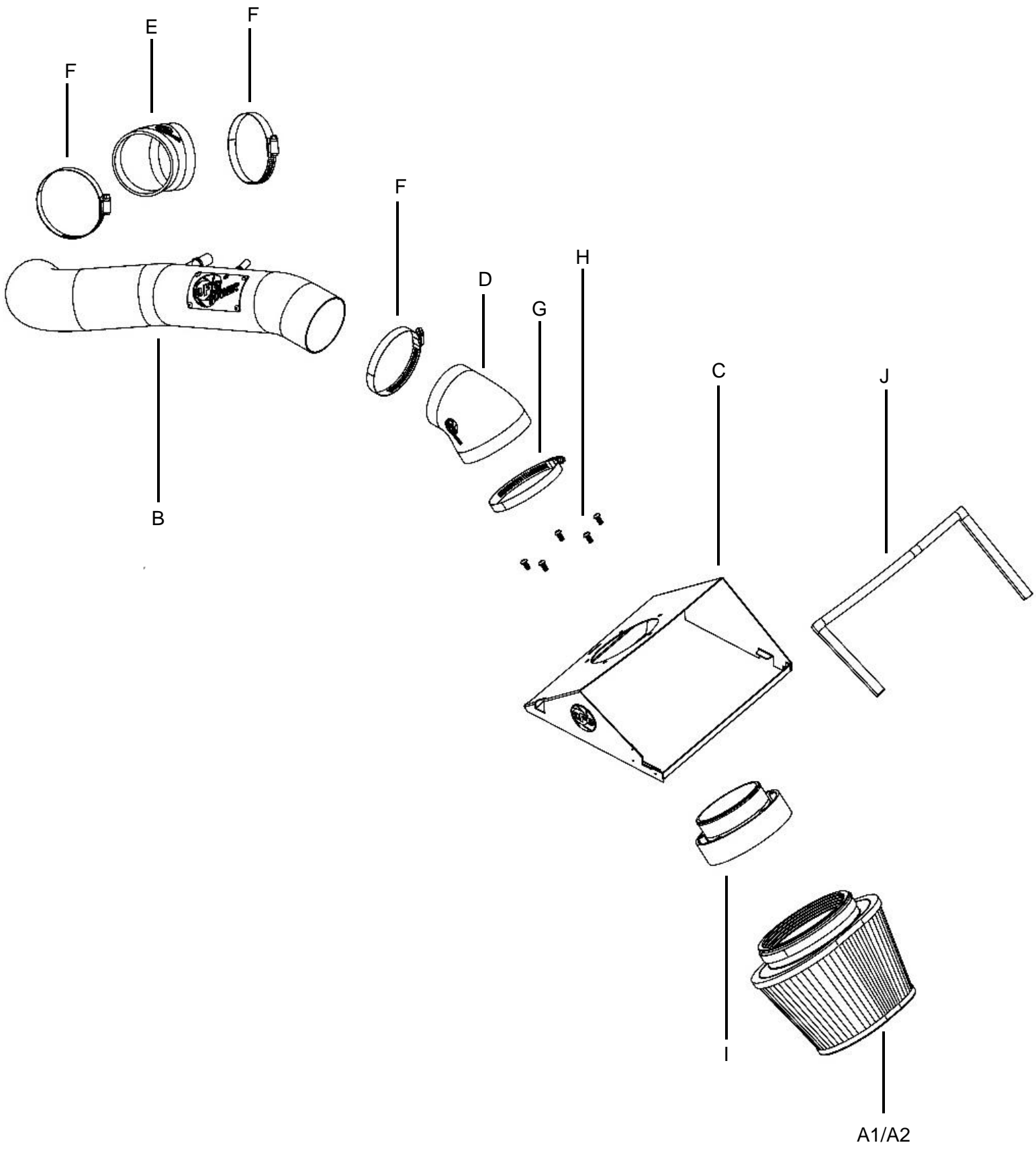
- Please read the entire instruction manual before proceeding.
- Ensure all components listed are present.
- If you are missing any of the components, call customer support at 951-493-7185.
- Ensure you have all necessary tools before proceeding.
- Do not attempt to work on your vehicle when the engine is hot.
- Retain factory parts for future use.

Label	Qty.	Description	Part Number
A1	1	Air Filter (Pro 5R) For 54-12742	24-91040
A2	1	Air Filter (Pro DRY S) For 51-12742	21-91040
B	1	Tube: 54-12742 (Wrinkle Black)	05-12742B3
C	1	Housing: 54-12742	05-12742B2
D	1	Coupling, Silicone Elbow Rdcr: 4.15" x 3.5" x 49 Deg	05-01353
E	1	Coupling, Silicone: 3-1/2"ID x 30 Deg	05-01494
F	3	Clamp, 056 (3-1/16" – 4")	03-50009
G	1	Clamp, 064 (2-1/2" – 4-1/2")	03-50006
H	5	Screw, Btm Hd Socket: M6x1x12	03-50102
I	1	Adaptor, Injection Molded: 5.5"	05-00611
J	1	Seal, Trim 7/16" (23 inches)	05-00072

Installation will require the following tools:

7mm, 8mm, Nut Drivers or Ratchet and Sockets, Flat Head Screwdriver

Warranty Information available at: <https://afepower.com/contact#warranty>





Refer to Figure A for Steps 1-3

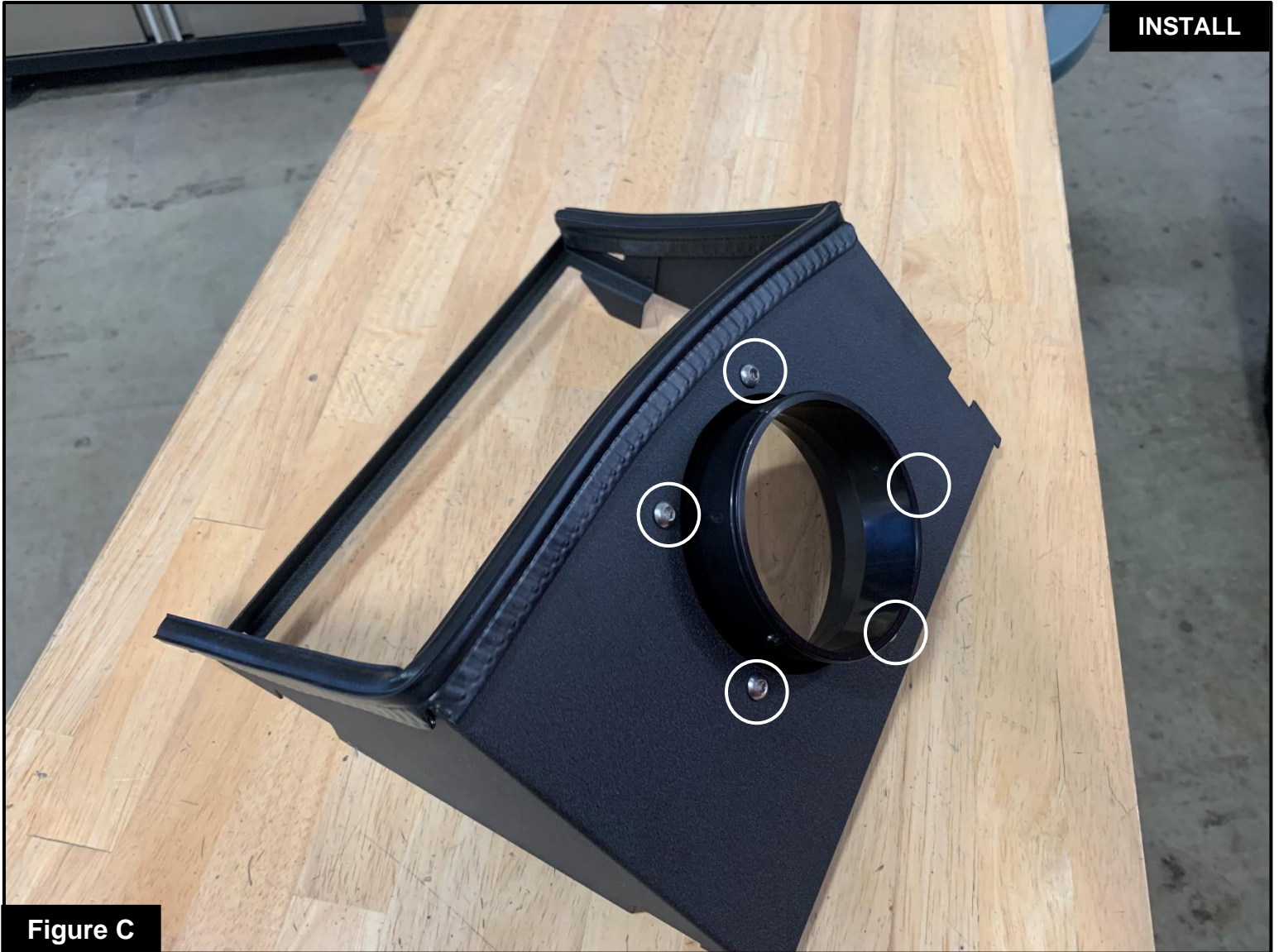
- Step 1: Loosen the clamp securing the intake tube to the throttle body.
- Step 2: Detach the coolant hose from the intake tube.
- Step 3: Disconnect the two vent hoses connected to the intake tube.



Figure B

Refer to Figure B for Steps 4-6

- Step 4: Unlatch the two clips securing the air box lid.
- Step 5: Remove the air box lid and intake tube from the vehicle.
- Step 6: Remove the factory air filter from the air box.

**Figure C****Refer to Figure C for Steps 7-8**

Step 7: Install the filter adapter using the supplied screws.

Step 8: Install the provided seal trim along the top edge of the housing.

If you have also purchased Rapid Induction Dynamic Air Scoop (D.A.S), Part number 52-10010S, 52-10010SR or 52-10010SL, you can proceed with the installation of that part at this step. Once the D.A.S. is installed, continue to Step 9.

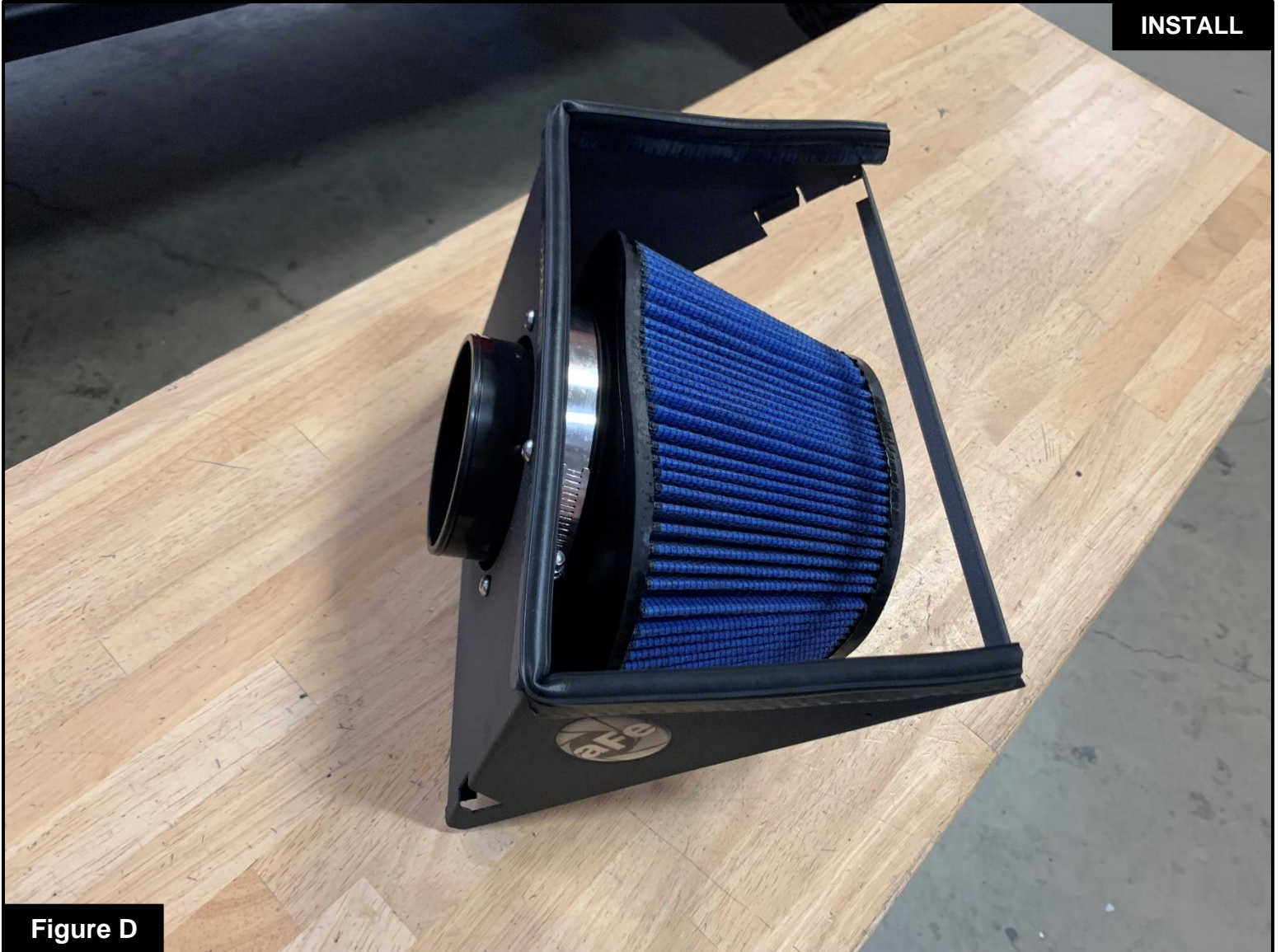


Figure D

Refer to Figure D for Step 9

Step 9: Install the air filter on the filter adapter. Tighten the clamp

INSTALL



Figure E

Refer to Figure E for Step 10

Step 10: Install the housing assembly onto the lower portion on the factory air box, secure it by latching the two clips.



Figure F

Refer to Figure F for Step 11

Step 11: Install the coupling and clamps on the throttle body, oriented as shown. Do not tighten clamps yet.



Figure G

Refer to Figure G for Step 12

Step 12: Install the coupling and clamps on to the filter adapter oriented as shown, do not tighten clamps yet.



Figure H

Refer to Figure H for Step 13

Step 13: Install the intake tube. Route it under the coolant hose. Insert the tube into the coupling on the housing side first, then into the coupling on the throttle body side. Align tube and couplings, then tighten all clamps.



Figure I

Refer to Figure I for Step 14

Step 14: Connect the two vent hoses to the intake tube.



Figure J

Refer to Figure J for Step 15

Step 15: Verify all clamps and connections are secured. Your installation is now complete. Thank you for choosing aFe POWER!

Place enclosed CARB EO sticker on or near the device on a smooth, clean surface. EO identification label is required to pass smog inspection.



PAGE LEFT BLANK INTENTIONALLY



PAGE LEFT BLANK INTENTIONALLY



advanced FLOW engineering, Inc.

252 Granite Street Corona, CA 92879

<https://afepower.com/contact>