

***advanced FLOW engineering*** Magnum Force Stage-2 Cold Air Intake System

**Instruction Manual** P/N: 54-13073D / 54-13073R

Make: Chevrolet	Model: Silverado 1500	Year: 2009-2013	Engine: V8-4.8/5.3/6.2L
Make: Chevrolet	Model: Tahoe/Suburban	Year: 2009-2014	Engine: V8-4.8/5.3/6.2L
Make: GMC	Model: Sierra 1500	Year: 2009-2013	Engine: V8-4.8/5.3/6.2L
Make: GMC	Model: Yukon/Yukon XL	Year: 2009-2014	Engine: V8-4.8/5.3/6.2L
Make: Cadillac	Model: Escalade	Year: 2009-2014	Engine: V8-6.2L
Make: Chevrolet	Model: Avalanche	Year: 2009-2013	Engine: V8-5.3L



- Please read the entire instruction manual before proceeding.
- Ensure all components listed are present.
- If you are missing any of the components, call customer support at 951-493-7185.
- Ensure you have all necessary tools before proceeding.
- Do not attempt to work on your vehicle when the engine is hot.
- Retain factory parts for future use.

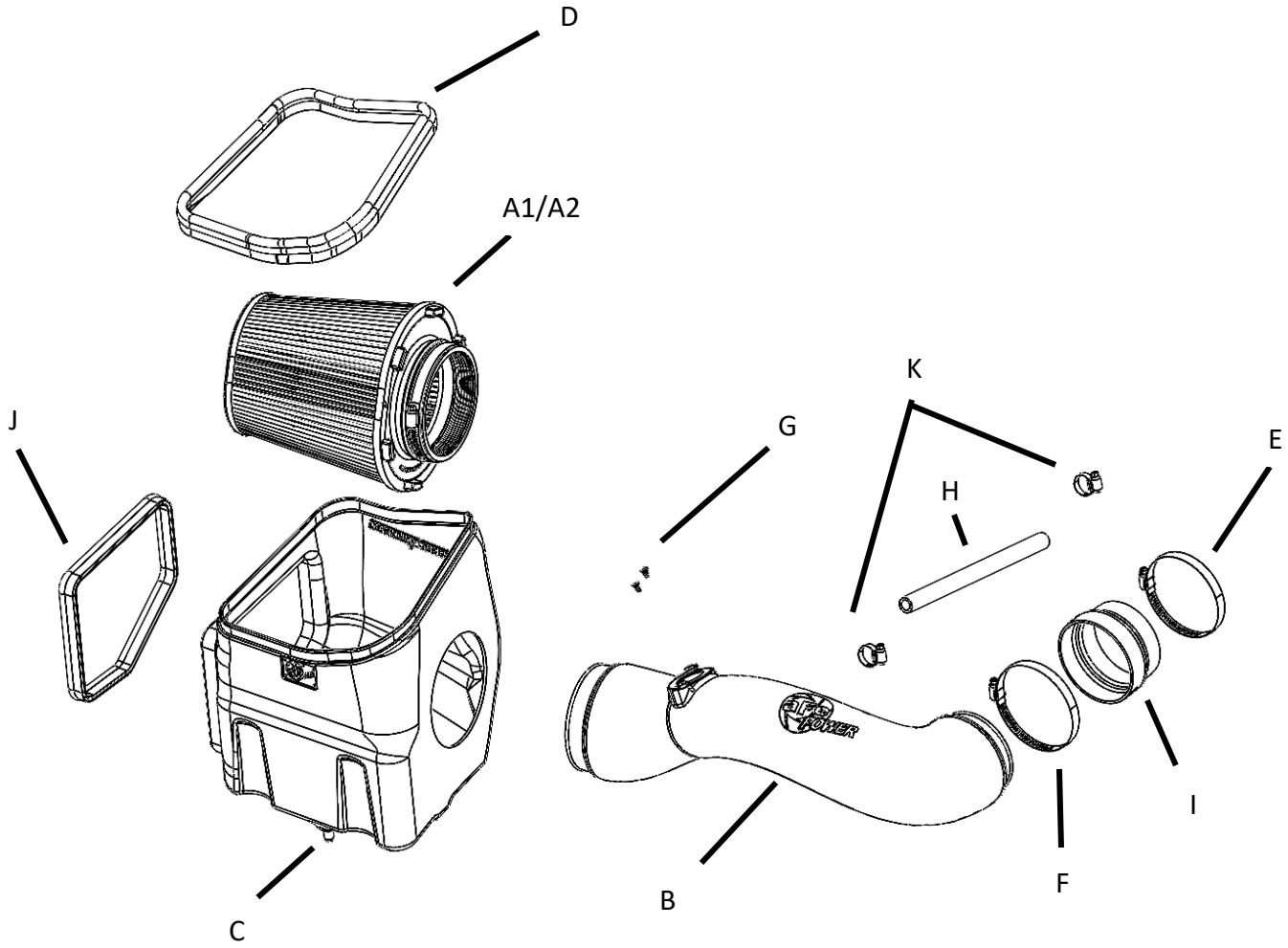
Label	Qty.	Description	Part Number
A1	1	Air Filter (Pro 5R) for 54-13073R	24-91120
A2	1	Air Filter (Pro DRY S) for 54-13073D	21-91120
B	1	Tube	05-74103B1
C	1	Housing	05-5413060B2
D	1	Seal, Trim: 13/32" Double Bulb (37.50" Length)	05-01534
E	1	Clamp, #060	03-50002
F	1	Clamp, #064	03-50006
G	2	Torx Screw: M4	03-50491
H	1	Silicone Breather Hose, 1/2" (14" length)	05-01396
I	1	Coupling, Silicone Reducer	05-01459
J	1	Seal, Trim: 3/4" Bulb (26" Length)	05-01507
K	2	Clamps, Mini #012	03-50023

**Installation will require the following tools:**

8mm nut driver, 1/4" nut driver, T15 and T20 Torx driver, small flat-head screwdriver, pliers.

Warranty Information available at: <https://afepower.com/contact#warranty>

**Emissions Disclaimer:** This product is not currently CARB exempt and is not available for purchase in California or for use on any vehicle registered with the California Department of Motor Vehicles.



**Figure A****Refer to Figure A for Steps 1-3**

Step 1: Remove the engine cover by lifting upwards and towards the front of the vehicle.

Step 2: Disconnect the circled plug for the MAF sensor.

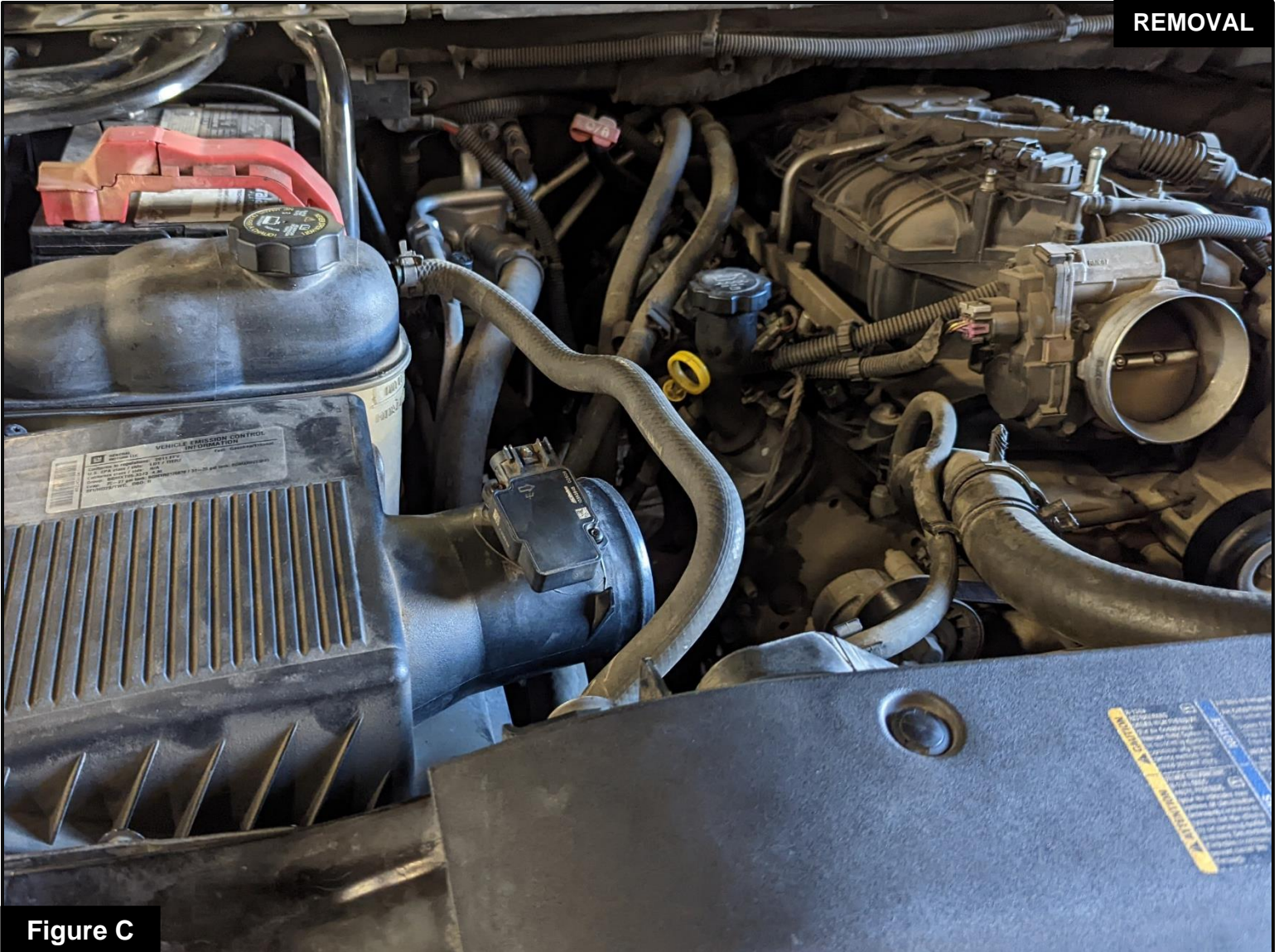
Step 3: Loosen all tube clamps using an 8mm nut driver (arrows).



Figure B

**Refer to Figure B for Step 4**

Step 4: Unclip the breather line using pliers.

**Figure C****Refer to Figure C for Steps 5-6**

Step 5: Remove the factory intake tube.

Step 6: Pull up on the factory housing to remove it from the vehicle.

**Figure D**

### **Refer to Figure D for Step 7**

Step 7: Install the supplied air filter into the aFe POWER housing. Place the air filter into the large opening at the top, then slip the air filter mouth into the round opening on the aFe POWER housing, making sure the air filter's lip locks into place.



Figure E

**Refer to Figure E for Steps 8-9**

Step 8: Install the longer seal trim on the top of the aFe POWER housing.

Step 9: Install the shorter seal trim on side of the aFe POWER housing.

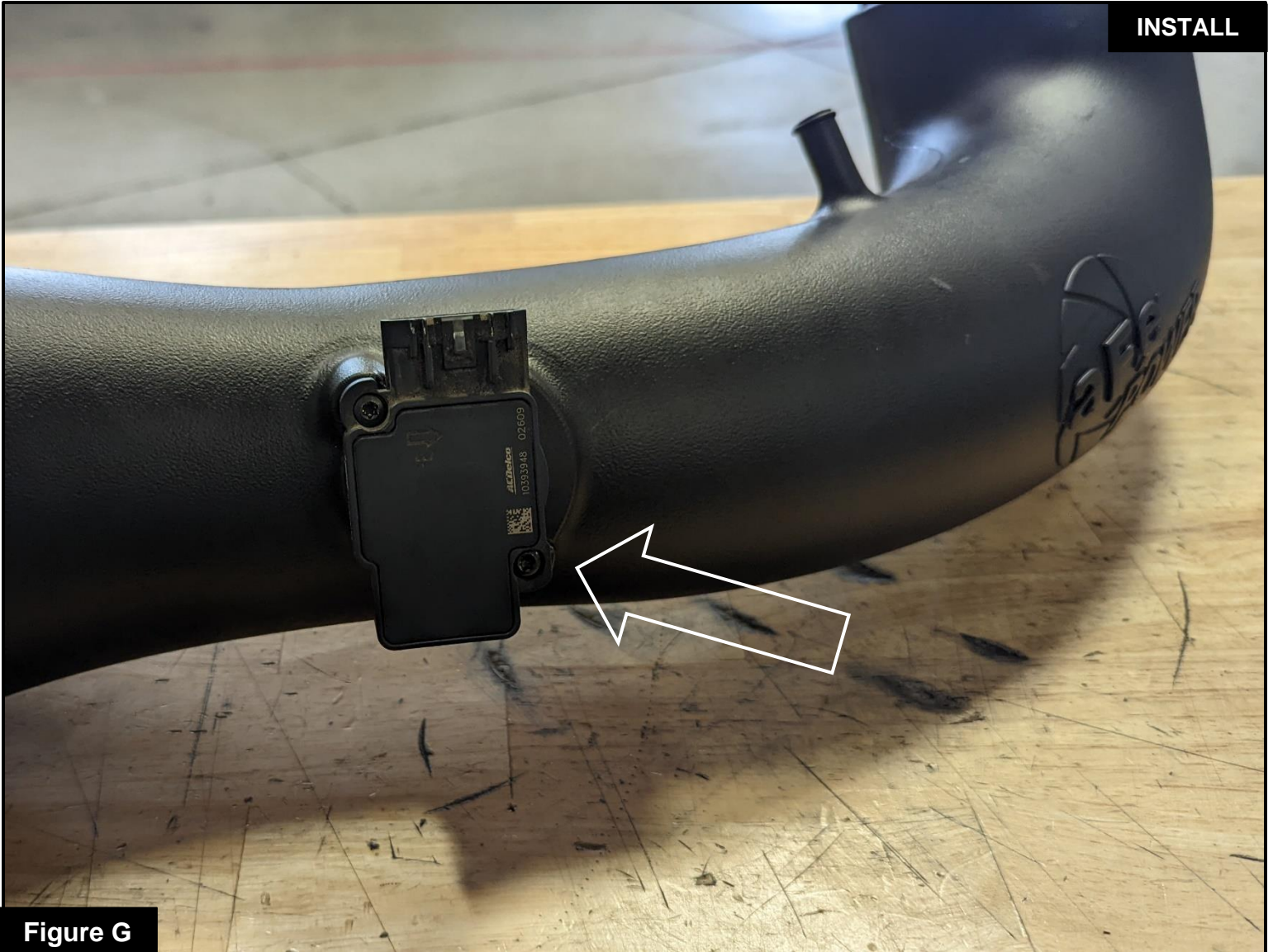




Figure F

**Refer to Figure F for Step 10**

Step 10: Remove the retaining plug from the bottom of the factory housing and transfer it to the aFe POWER housing.

**Figure G****Refer to Figure G for Steps 11-12**

Step 11: Remove the factory sensor from the factory housing using a T15 Torx driver.

Step 12: Transfer over the MAF sensor to the aFe POWER tube and secure it using the supplied Torx M4 hardware with a T20 Torx driver.

**Figure H****Refer to Figure H for Steps 13-14**

Step 13: Install the aFe POWER housing assembly into the vehicle. Firmly push the housing into the factory mounting grommets.

Step 14: Put the filter clamp over the filter flange but do not tighten yet.

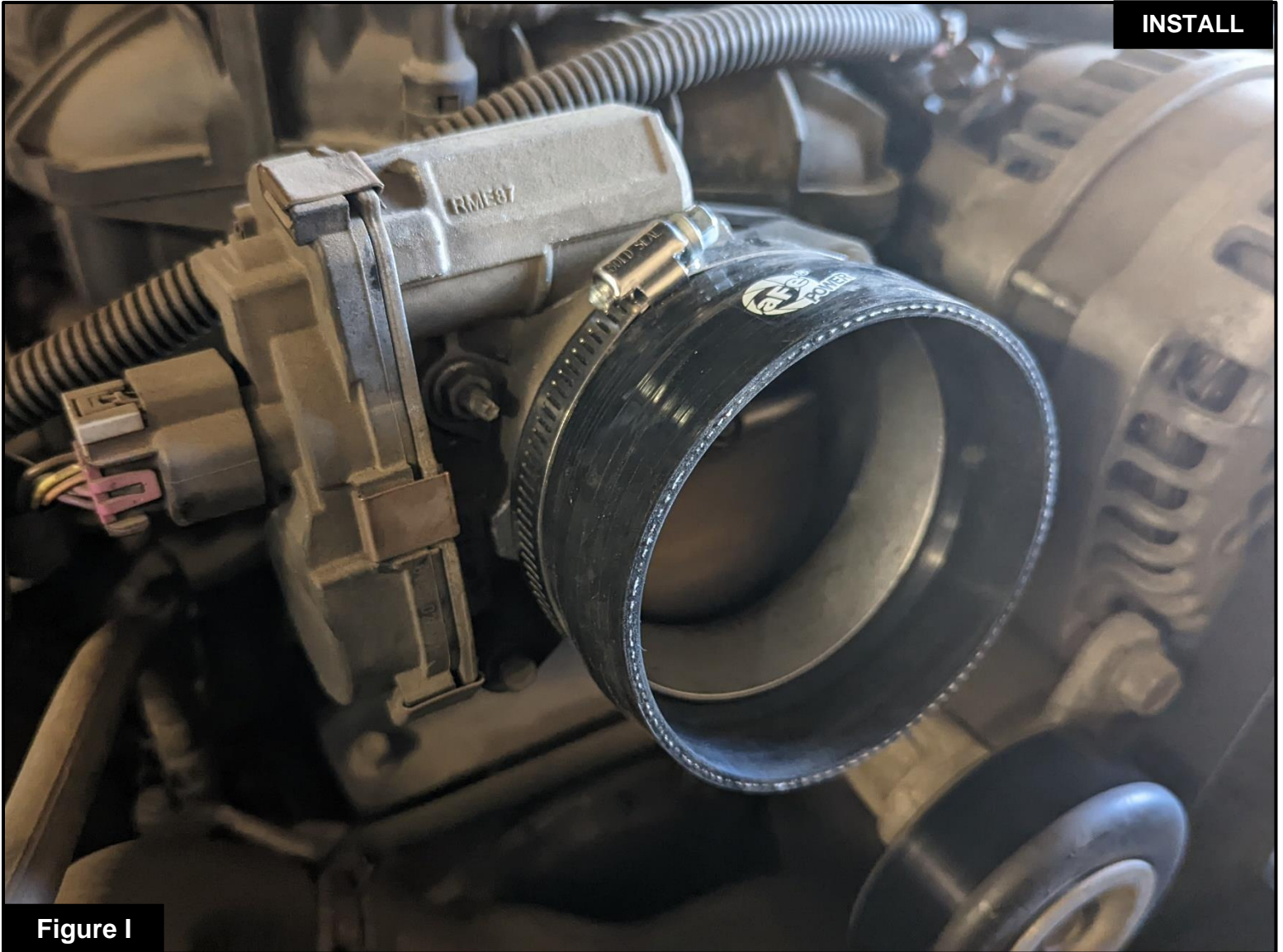


Figure I

**Refer to Figure I for Step 15**

Step 15: Slip the coupler over the throttle body and tighten it down with the 060 worm clamp.



INSTALL

Figure J

**Refer to Figure J for Steps 16-18**

- Step 16: Slip the other worm clamp over the other end of the reducer coupling. Do not tighten yet.
- Step 17: Install the aFe POWER intake tube into the vehicle. Slide the aFe POWER intake tube into the filter, and then into the coupling on the throttle body.
- Step 18: Align the aFe POWER intake tube correctly then tighten all the clamps.

**Figure K****Refer to Figure K for Step 19**

Step 19: Using the supplied silicone breather hose and the two mini clamps, connect the breather that was disconnected in Step 4 to the aFe Power intake tube using a ¼" nut driver.

**Figure L****Refer to Figure L for Steps 20-22**

Step 20: Reconnect the MAF Sensor harness (arrow).

Step 21: Reinstall the engine cover.

Step 22: Check all the components are tight and secure. Your installation is now complete. Thank you for choosing aFe POWER!

**NOTE: Check all screws, clamps, and connectors are secure after 100-200 miles.**



***advanced FLOW engineering, inc.***

Corona, CA 92879

<https://afepower.com/contact>