

advanced FLOW engineering Magnum FORCE Stage-2 Si Cold Air Intake System

Instruction Manual P/N: 54-83037D / 54-83037R

Make: Porsche	Model: 911 Carrera (991)	Year: 2012-2016	Engine: H6-3.4L
Make: Porsche	Model: 911 Carrera 4 (991)	Year: 2012-2016	Engine: H6-3.4L
Make: Porsche	Model: 911 Carrera 4S (991)	Year: 2012-2016	Engine: H6-3.8L
Make: Porsche	Model: 911 Carrera S (991)	Year: 2012-2016	Engine: H6-3.8L



- Please read the entire instruction manual before proceeding.
- Ensure all components listed are present.
- If you are missing any of the components, call customer support at 951-493-7100.
- Ensure you have all necessary tools before proceeding.
- Do not attempt to work on your vehicle when the engine is hot.

Retain factory parts for future use.

Label	Qty.	Description	Part Number
A1	2	Air Filter (Pro 5R)	24-91045
A2	2	Air Filter (Pro DRY S)	21-91045
B	1	Tube	05-12352B1
C	1	Housing	05-12352B2
D	1	Cover	05-12352B3
E	1	Coupling, Silicone w/ Hole	05-01381
F	1	Sleeve, Silicone	05-01382
G	2	Clamp, #060	03-50002
H	1	Clamp, Mini #024	03-50093
I	1	Cap, Vinyl	03-50408
J	7	Screws, aFe POWER	03-50483
K	2	Ties, Nylon	03-50492
L	2	Cap, Vinyl Mini	03-50484

Installation will require the following tools:

8mm nut driver, 10mm socket & nut driver, T20 & T30 Torx, flathead screwdriver.

Warranty Information available at <https://afepower.com/contact#warranty>

Emissions Disclaimer: This product is not currently CARB exempt and is not available for purchase in California or for use on any vehicle registered with the California Department of Motor Vehicles.

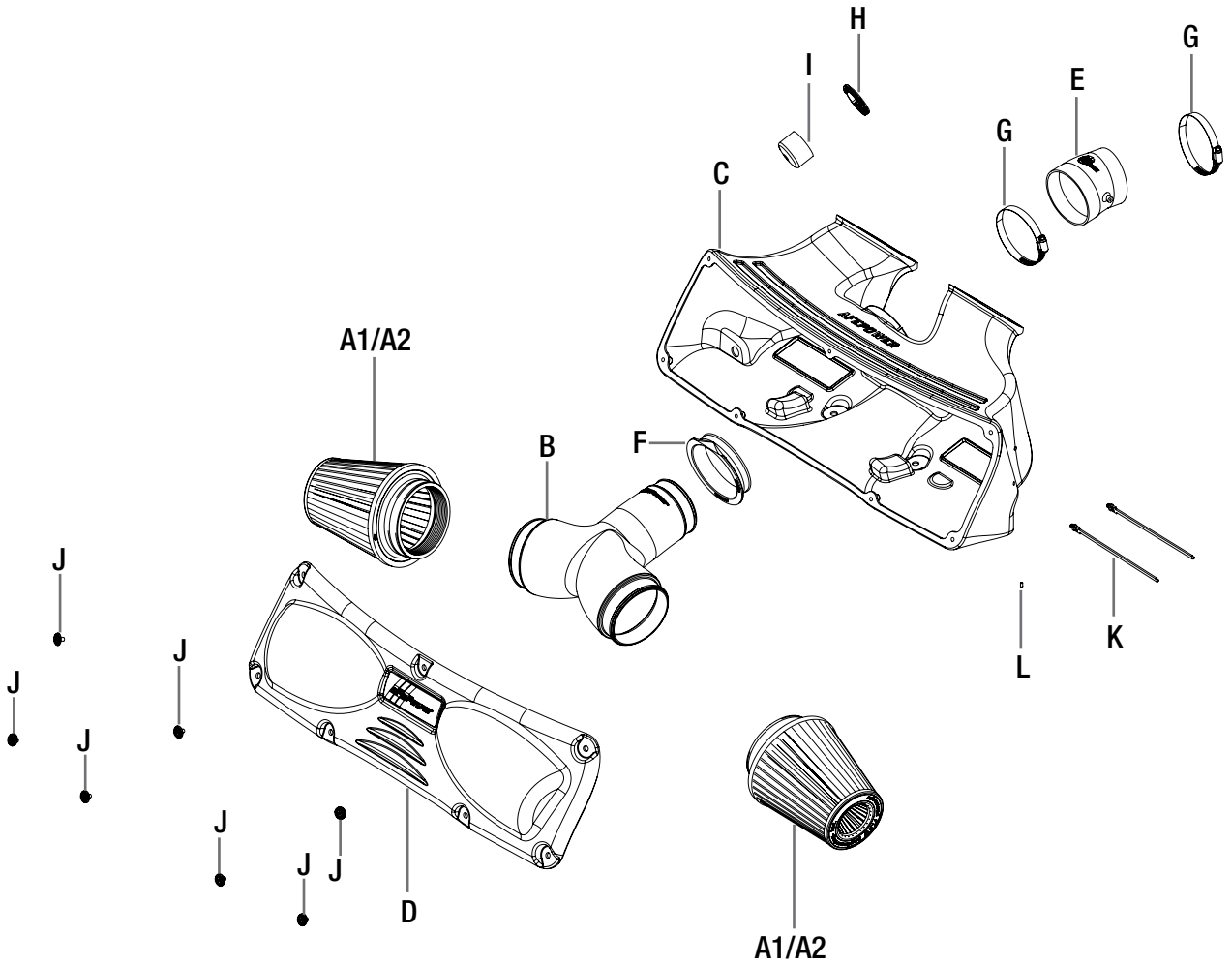




Figure A

Refer to Figure A for Step 1

Step 1: Inside the cabin raise the rear wing to its highest setting and open the engine compartment.



Figure B

Refer to Figure B for Step 2

Step 2: With a pulling motion, remove the engine fans off the factory grommets and unplug the fan harness from both sides. Take the engine cover/fan assembly out of the vehicle.



Figure C

Refer to Figure C for Step 3

Step 3: Remove the factory scoop by unclipping the latch cable off and pulling the scoop off the factory grommets.



Figure D

Refer to Figure D for Step 4

Step 4: Using a T30 Torx, remove the screws on the bottom of the bumper cover.



Figure E

Refer to Figure E for Step 5

Step 5: Using the T30 Torx, remove the three (x3) screws on the side of the fender well and bumper cover. Repeat for other side.



Figure F

Refer to Figure F for Steps 6-8

Step 6: Remove the cover on top for the tail light, to access the tail light bolts. Repeat for other side.

Step 7: Using a T25 Torx, remove two (x2) bolts retaining the tail light. Repeat for other side.

Step 8: Pull the tail light out of the vehicle, disconnect it from the harness, and remove it. Repeat for other side.

**Refer to Figure G for Steps 9-10**

Step 9: Using the T30 Torx, remove the four (x4) screws on top of the bumper cover.

Step 10: Slide your hand behind the bumper cover and disconnect the accessory light harness. Unclip it from the inside of the bumper cover located on the driver side.

**Figure H****Refer to Figure H for Steps 11-12**

Step 11: Remove the bolt securing the bumper cover where the tail light was located at. (On bottom side)

Step 12: Carefully remove the bumper cover.



Figure I

Refer to Figure I for Steps 13-15

Step 13: With a 10mm, remove the two (x2) bolts retaining the factory housing.

Step 14: Unclip the changeover valves and detach the sound chamber tube from the factory housing.

Untighten the clamp at the throttle body.

Step 15: Carefully remove the factory intake housing out of the vehicle.



Figure J

Refer to Figure J for Step 16

Step 16: With the provided rubber caps, cap off both changeover valves.

**Figure K****Refer to Figure K for Step 17**

Step 17: Remove the two (x2) 9/16" nuts on the heat shield. Keep the heat shield in its location and save the nuts. Close off the sound chamber with the provided cap and clamp.



Figure L

Refer to Figure L for Steps 18-19

Step 18: Pre-install the silicone coupling onto the throttle body with clamps. Do not tighten clamps at this time.

Step 19: Connect the vacuum line to the silicone coupling.



Figure M

Refer to Figure M for Steps 20-24

Step 20: Transfer two (x2) of the vent grille from the factory housing to the aFe POWER housing.

Step 21: Transfer the (x2) two rubber grommets and steel sleeve into the aFe POWER housing.

Step 22: Install the aFe POWER housing into the vehicle.

Step 23: Re-install the two (x2) 10mm bolts on the side of the housing.

Step 24: Re-install the 9/16" nuts on the factory studs.

INSTALL



Figure N

Refer to Figure N for Step 25

Step 25: Install the silicone sleeve into the housing, ensure the flat side of the silicone sleeve is flat with the top of the housing for proper alignment.



INSTALL

Figure 0

Refer to Figure 0 for Step 26

Step 26: Slide the intake tube through the silicone sleeve and into the coupling on the throttle body, do not tighten clamps at this time.



Figure P

Refer to Figure P for Step 27

Step 27: Secure the changeover valves with the provided cable ties onto the housing. There is two (x2) pre-drilled holes for locating the cable ties.

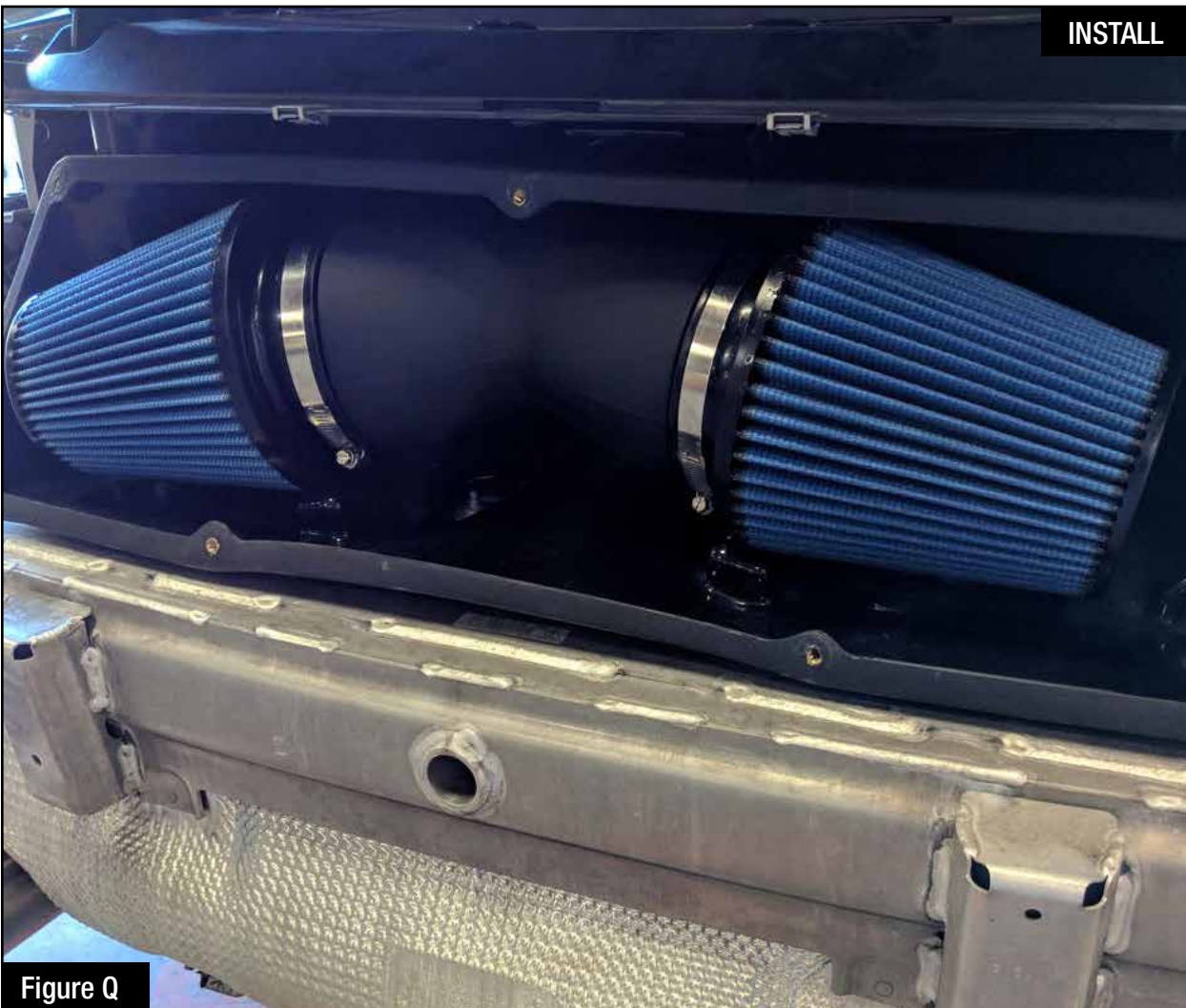


Figure Q

Refer to Figure Q for Steps 28-30

Step 28: Install the aFe POWER filters onto the tube.

Step 29: Adjust the tube, filters and coupling assuring the filters sit on the filter locaters.

Step 30: Tighten all clamps at this time.



Figure R

Refer to Figure R for Steps 31-32

Step 31: Install the cover onto the housing.

Step 32: Loosely install the seven aFe POWER engraved washer and screw until all are threaded, then tighten all.

**Figure S****Refer to Figure S for Steps 33-34**

Step 33: Re-install the rear bumper cover, tail lights, factory scoop and engine fans. Refer to Steps 1-13.

Step 34: Your installation is now complete. Thank you for choosing aFe POWER!

NOTE: Check all bolts, clamps, and connectors after 100-200 miles.

Page left blank intentionally



advanced FLOW engineering, inc.
252 Granite Street Corona, CA 92879
<https://afepower.com/contact>