



takeda by aFe

Installation

Kit P/N:

TR-4201P (POLISHED)
TR-4201B (WRINKLE BLACK)

Make:

Mitsubishi

Model:

Lancer

Year:

'08-'14

Engine:

L4-2.0L

Trims:

DE/ES/LE

Parts Identification:

- 1 Air filter (*Pro Dry 5™* TF-9001D)
- 1 Intake tube, polished 05-T4201P1
- 1 Housing, wrinkle black 05-T4201B2
- 1 Coupling, elbow 05-00135
- 2 Clamp #048
- 2 Wavy Washer M6
- 2 Flat washer M6
- 2 Nut M6
- 1 Nylon spacer
- 2 Screws M4
- 1 1/2" hose @ 6"L

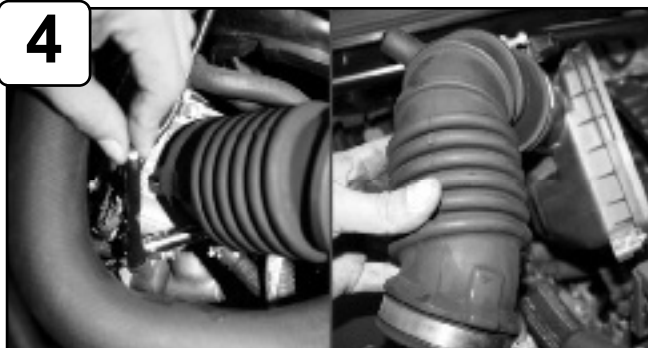
Tools Required:

- 10mm socket or wrench
- Ratchet w/ extension
- Phillips screw driver
- Flat head screw driver
- 5/16" nut driver
- 4mm allen key
- Pliers

Note: Read instructions before installation and have tools ready.



1



4

With 10mm socket or wrench loosen the clamp on throttle body. Unclip upper half air box and remove intake assembly.



7

With t20 torx bit screwdriver remove MAF sensor from air box.



2

Complete stock intake. Please disconnect battery terminals before installation.



5

With 10mm socket or wrench loosen bottom half of air box. Pull back harness clip from air box.



8

Install MAF sensor to new tube and secure using M4 screws provided.



3

Disconnect MAF sensor and pull back crank case line and remove from engine.



6

Pull back ram air assembly from air box and remove.



9

Tighten isolation mount provided on housing using 10mm socket or wrench.



takeda by aFe

Accessories



Replacement Filter P/N:
TF-9001D



Pre Filter P/N:
TP-7011B

Note: Filter Cleaning: When cleaning your **Pro Dry S™** filter, be sure to use only "Restore Kit" (Takeda P/N: TP-7016C **Pro Dry S™** cleaner only.)

Pro Dry S™ cleaning:
see cleaning instruction sheet TF-9000I.

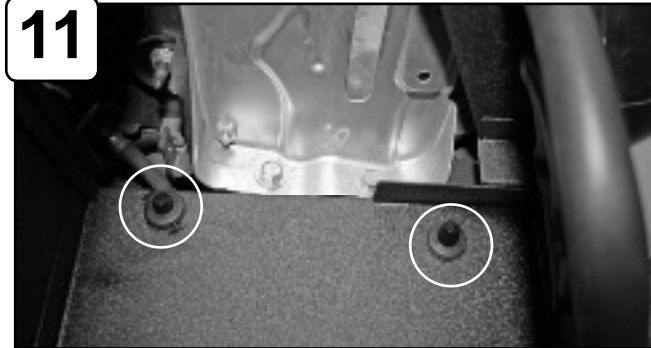
For replacement part(s) or "Restore Kit" please log on to takedausa.com
P.O. Box 1719 Corona CA, 92878

10



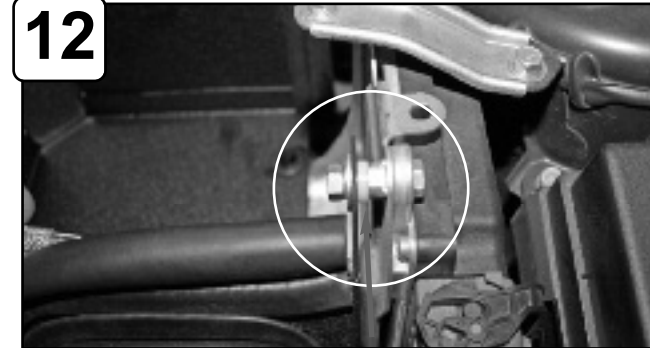
Install housing and position grommets on housing to factory fittings.

11



Make sure housing is secure on fittings.

12



Attach tab on housing to screw on ECU bracket. Make sure nylon spacer is between tab and ECU. Secure tab using M6 nut, wavy and flat washer. Tighten using 10mm socket or wrench.

13



Place filter in housing. Attach ram air assembly to housing.

14



Attach elbow coupling with clamps to tube. Position tube to throttle body and tab on tube to isolation mount.

15



With M6 nut, wavy and flat washer provided, secure tab and tighten using 10mm socket or wrench.

16



Install filter and tighten using 5/16" nut driver. Tighten all remaining clamps using 5/16" nut driver.

17



Install provided 5/8" hose to engine and tube. Reconnect MAF sensor harness. Reconnect battery terminals.

18



The installation of your Takeda performance intake is now complete. Please check all components and re-tighten if necessary. Thank you for choosing Takeda!

Place the included CARB EO sticker on or near the intake system on a smooth, clean surface. E.O. identification label is required in passing the smog check inspection.