

advanced FLOW engineering Cold Air Intake System

Instruction Manual P/N: 52-10017D / 52-10017R

Make: Mercedes-Benz Model: Sprinter 2500/3500 Year: 2014-2017 Engine: L4-2.1L (td)



9

- Please read the entire instruction manual before proceeding.
- Ensure all components listed are present.
- For technical support please call 951-493-7185.
- Ensure you have all necessary tools before proceeding.
- Do not attempt to work on your vehicle when the engine is hot.
- Retain factory parts for future use.

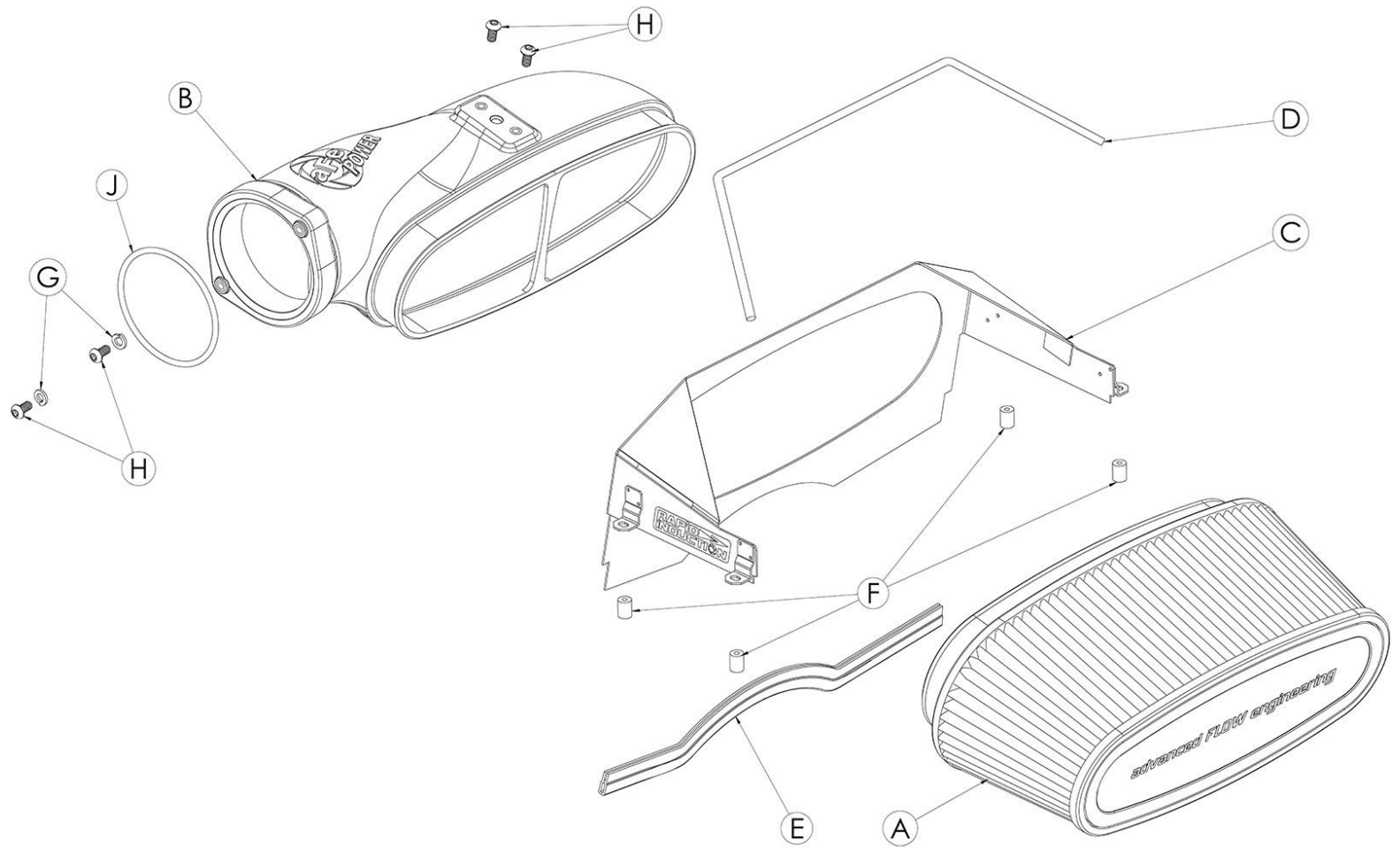
Label	Qty.	Description	Part Number
A1	1	Air Filter (Pro 5R)	24-90087
A2	1	Air Filter (Pro DRY S)	21-90087
B	1	Intake Tube	05-5270017B1
C	1	Housing	05-5270017B2
D	1	Trim, Rubber Edge: 1/16" (18" L)	05-00149
E	1	Seal, Trim: 7/16" Bulb, 1/16" Edge Thk (14"L)	05-00072
F	4	Spacer, Plastic: 0.5"OD x 0.194"ID x 0.313"L	03-50793
G	2	Washer, Lock: M6	03-50071
H	4	Screw, Btn Hd Socket: M6x1x12	03-50102
J	1	O-Ring, 82mm ID x 4mm W	05-60614

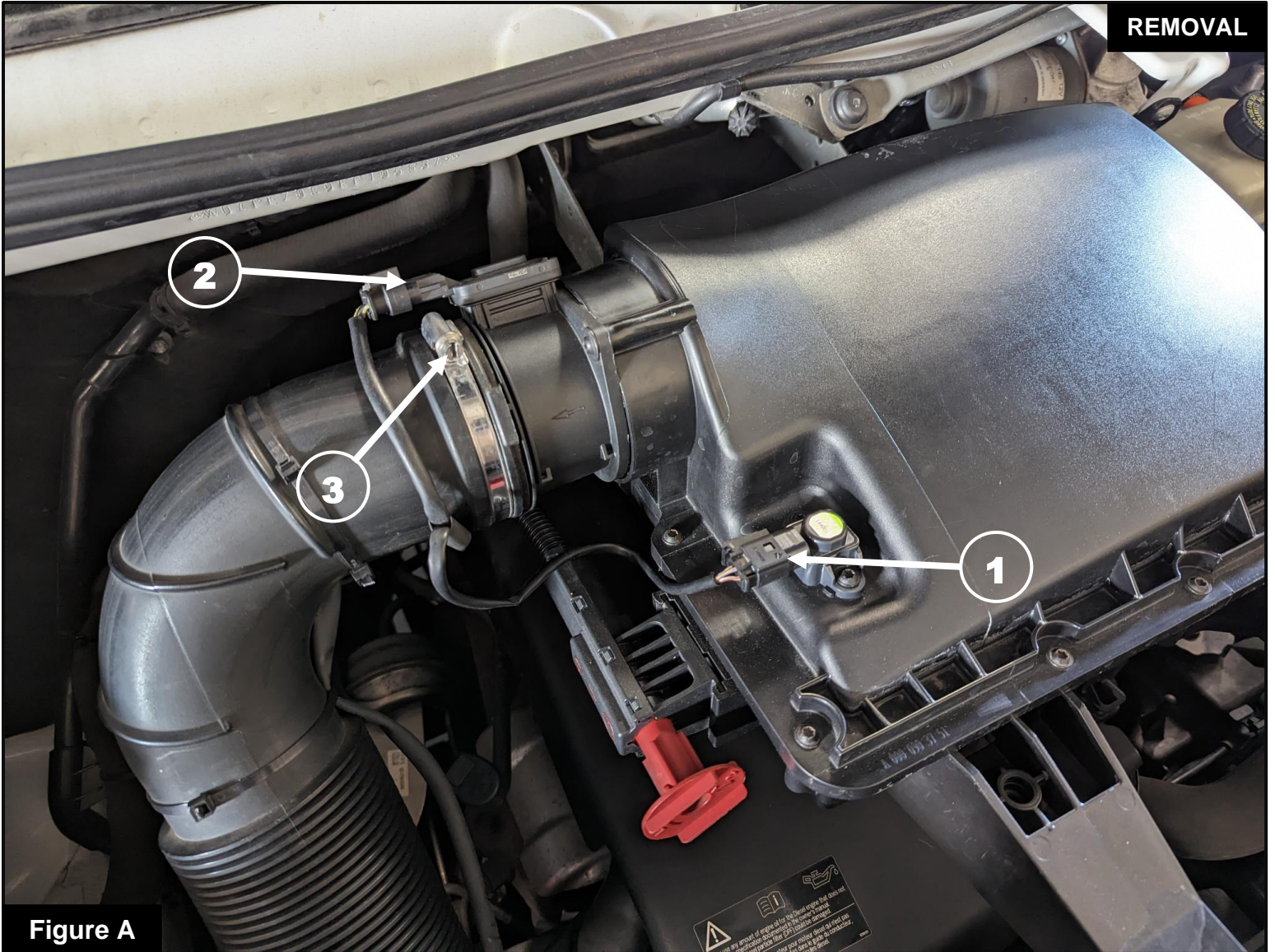
Installation will require the following tools:

7mm & 8mm nut driver, T20 & T25 Torx driver, 4mm Allen key

Warranty Information available at <https://afepower.com/contact#warranty>

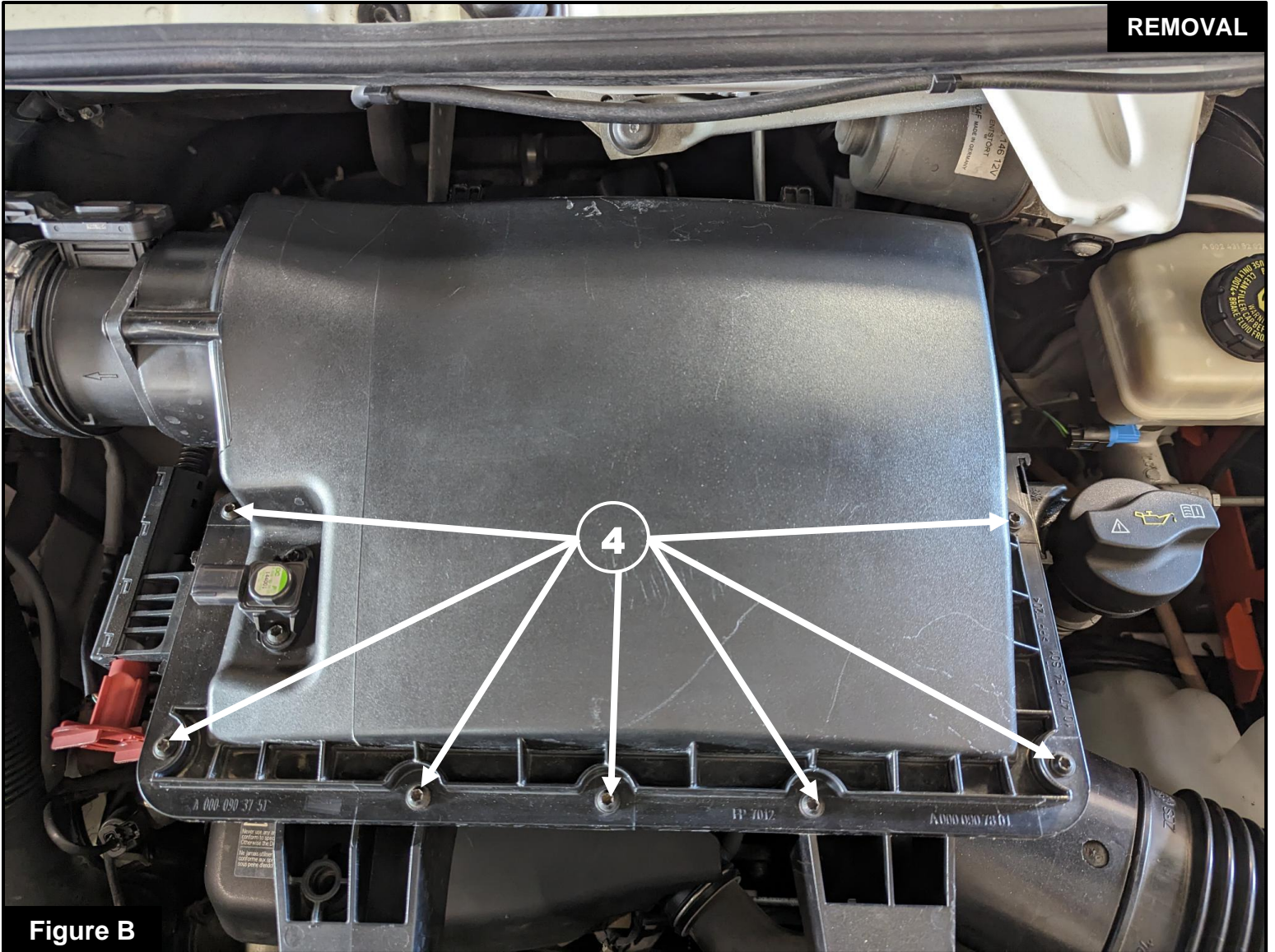
Emissions Disclaimer: This product is not currently CARB exempt and is not available for purchase in California or for use on any vehicle registered with the California Department of Motor Vehicles.



**Figure A****Refer to Figure A for Steps 1-2**

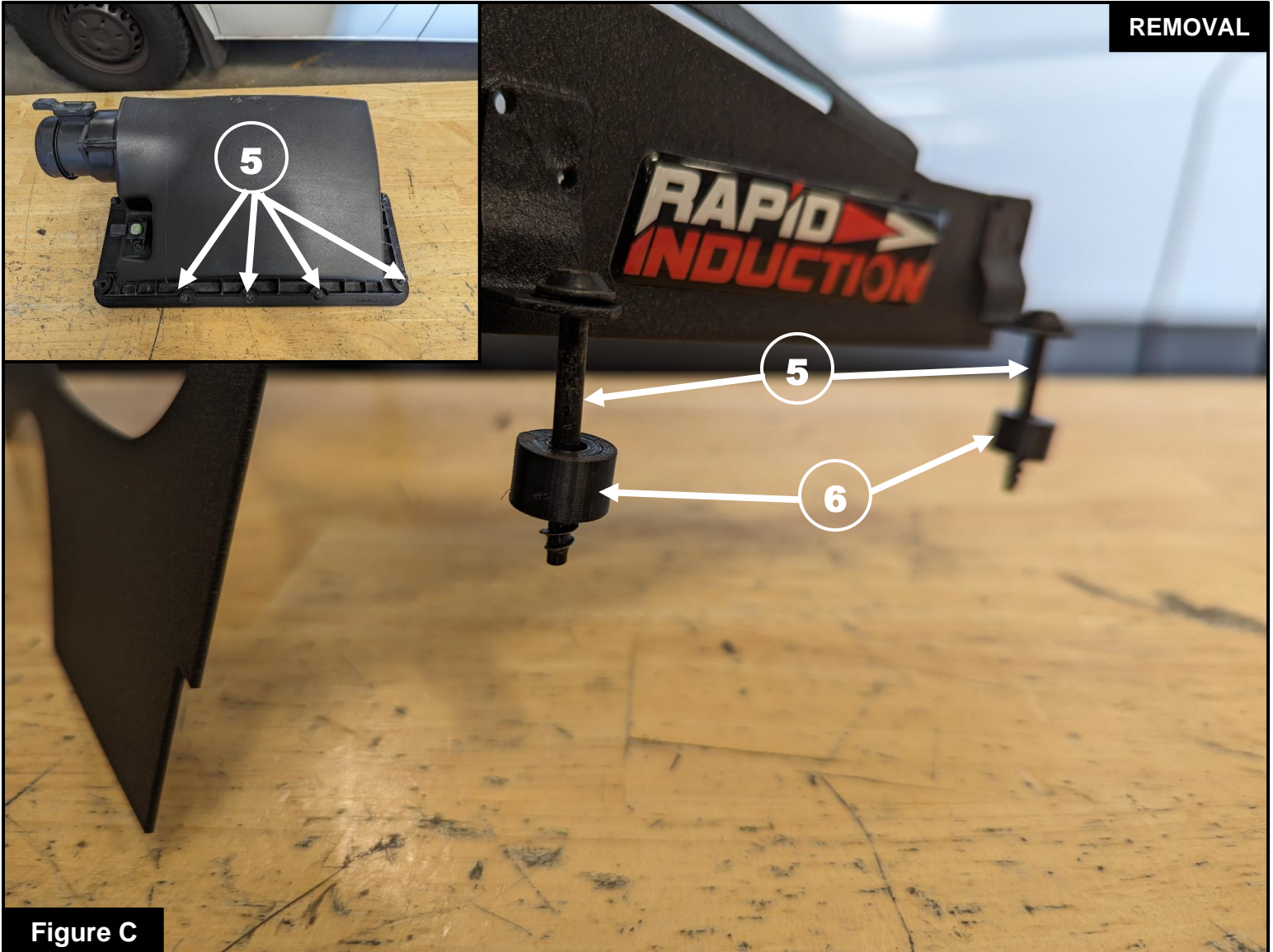
Step 1: Disconnect the MAP ① and the MAF ② sensors.

Step 2: Using a 7mm nut driver, loosen the clamp ③ at the MAF cartridge. Detach the intake tube from the MAF cartridge.

**Figure B****Refer to Figure B for Steps 3-4**

Step 3: Using a T25 Torx driver, loosen the 7 screws ④ securing the OE airbox lid.

Step 4: Remove the OE airbox lid and the OE flat panel air filter.

**Figure C****Refer to Figure C for Steps 5-6**

Step 5: Using a T25 Torx driver, remove 4 of the captive screws (5) from the OE airbox lid.

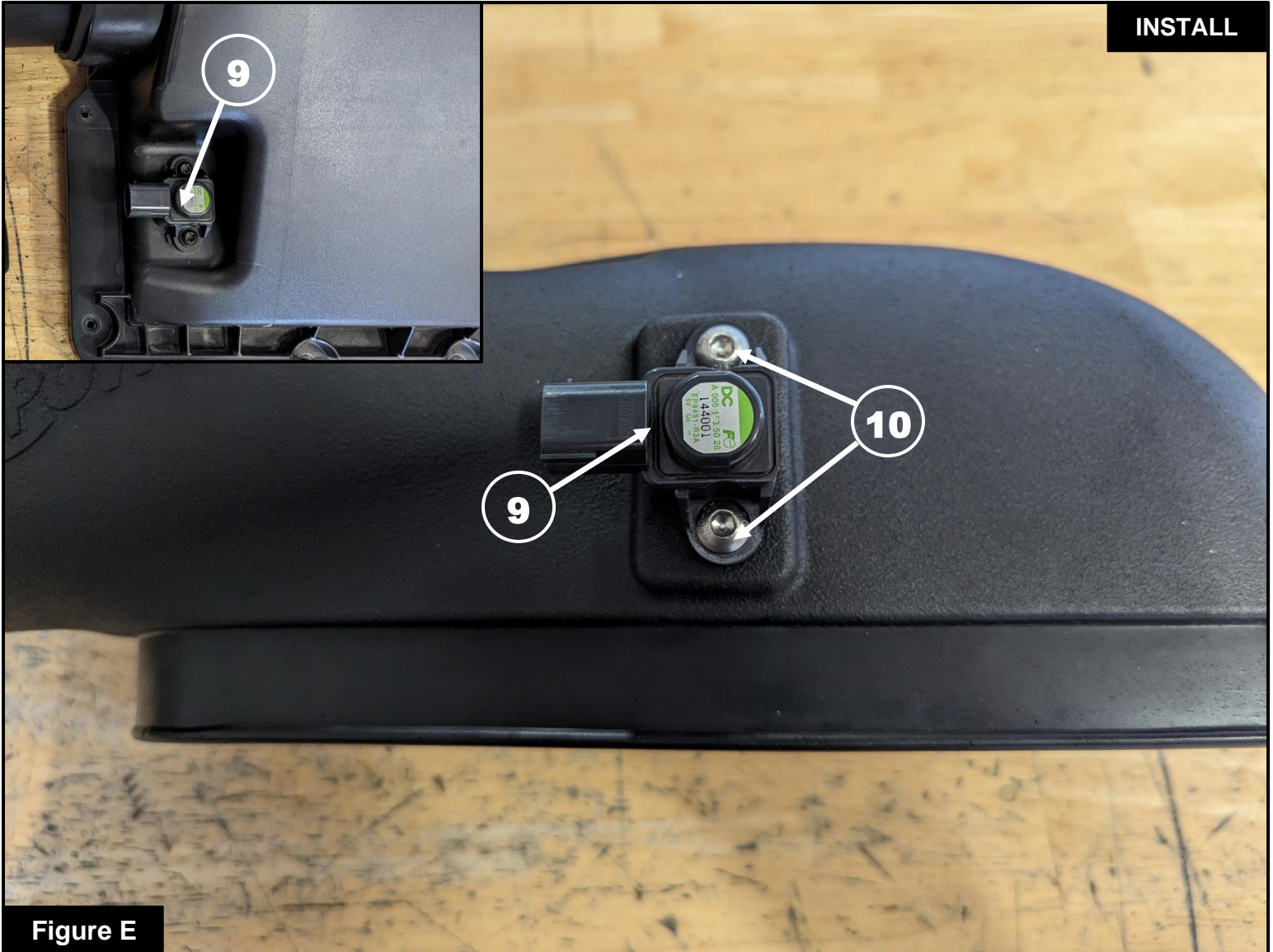
Step 6: Transfer the 4 captive screws to the aFe POWER housing. Secure the captive screws to the aFe POWER housing by placing them through the hole in the tabs and then screwing them through the supplied plastic spacers (6) as shown.

**Figure D****Refer to Figure D for Steps 7-9**

Step 7: Install supplied trim seal (7) along bottom edge of aFe POWER housing.

Step 8: Install supplied edge trim (8) along top edge of aFe POWER housing.

Step 9: Remove the clamp from aFe air filter then install the aFe filter into aFe POWER housing. Install the clamp loosely on the opening of the air filter. Do not tighten the clamp at this time.

**Figure E****Refer to Figure E for Step 10**

Step 10: Using a T25 Torx driver, remove the MAP sensor (9) from the OE airbox lid and transfer it to the aFe POWER intake tube. Install the MAP sensor with the supplied button head screws (10), use a 4mm Allen key to tighten.

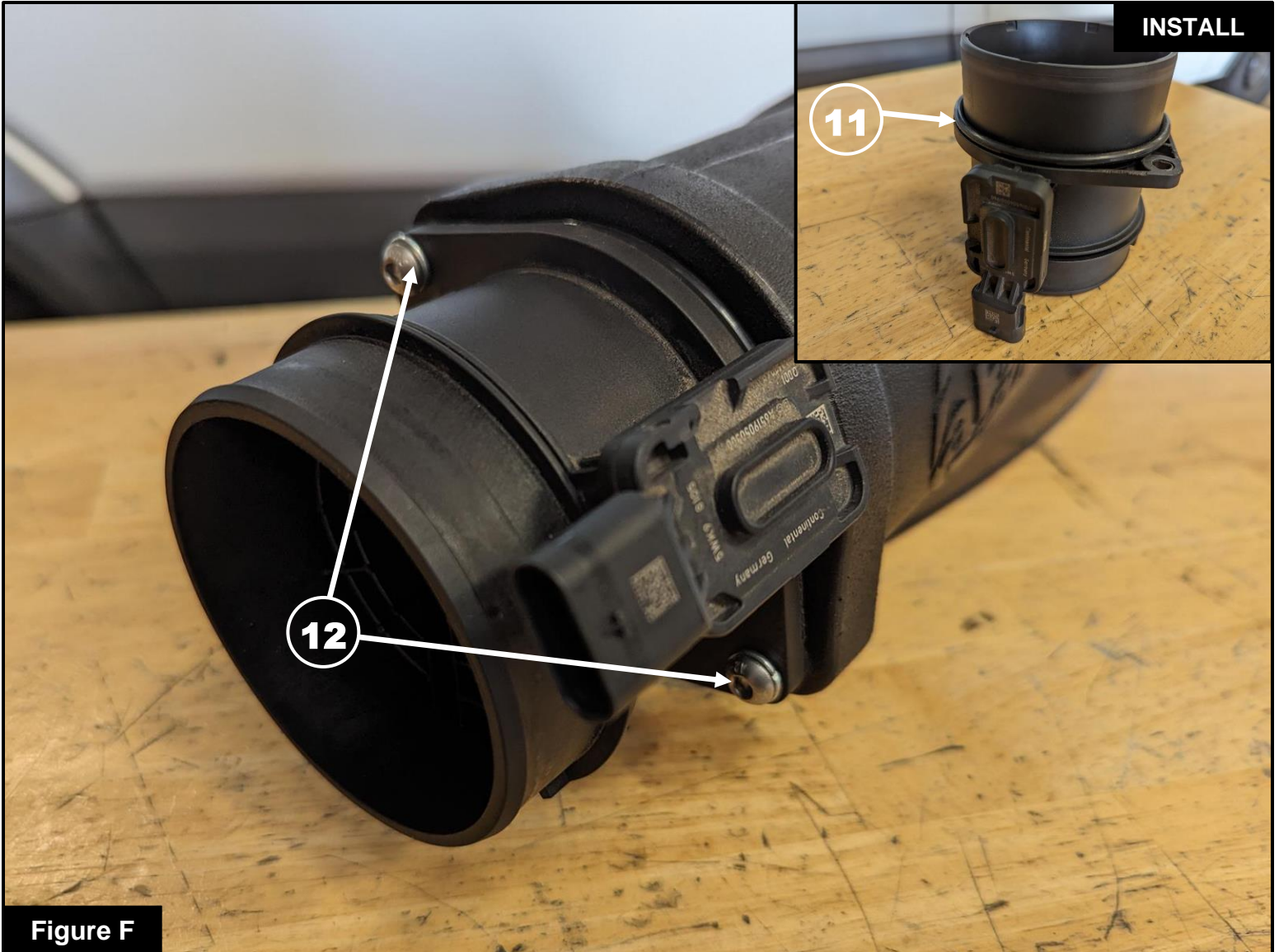


Figure F

Refer to Figure F for Steps 11-13

Step 11: Using a T20 Torx driver, remove the OE MAF cartridge from OE airbox lid.

Step 12: Install the supplied O-ring (11) on the "Inlet" side of the MAF cartridge.

Step 13: Install the MAF cartridge & O-ring onto aFe intake tube using supplied button head screws and lock washers (12), use a 4mm Allen key to tighten.

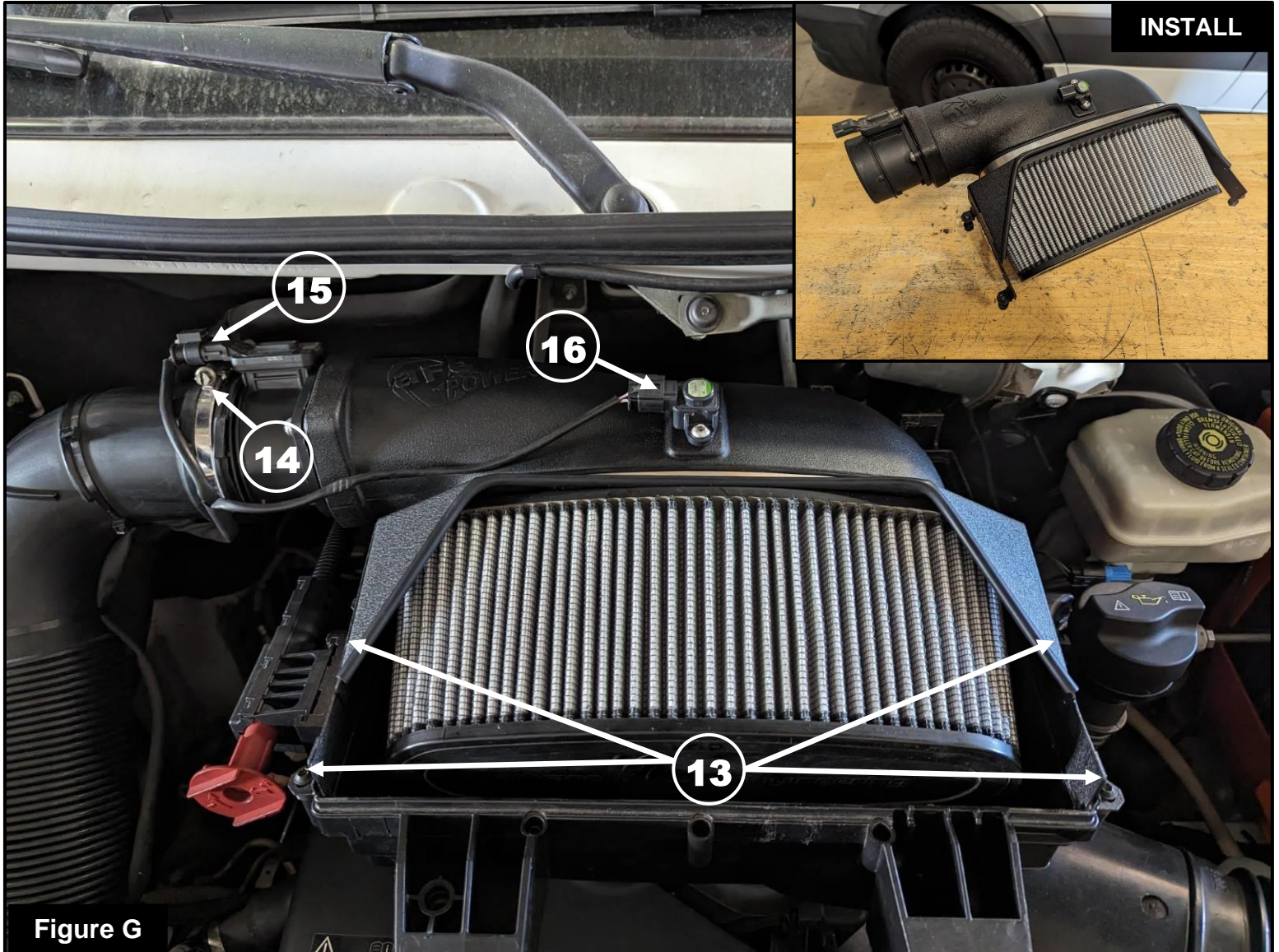


Figure G

Refer to Figure G for Step 14

Step 14: Install the aFe POWER intake tube assembly into the air filter and tighten the clamp using an 8mm nut driver.

Step 15: Install the aFe POWER housing & tube assembly onto the lower half of the OE airbox. Secure aFe housing & tube assembly by tightening the 4 screws (13) into the OE locations using a T25 Torx.

Step 16: Reconnect the OE intake tube to the MAF cartridge and tighten the clamp (14).

Step 17: Reconnect MAF (15) and MAP (16) sensors.

Check all the components are tight and secure. Your installation is now complete. Thank you for choosing aFe POWER!

NOTE: Check all bolts, clamps, and connectors after 100-200 miles.



Page left blank intentionally



advanced FLOW engineering, inc.

252 Granite Street Corona, CA 92879

<https://afepower.com/contact>