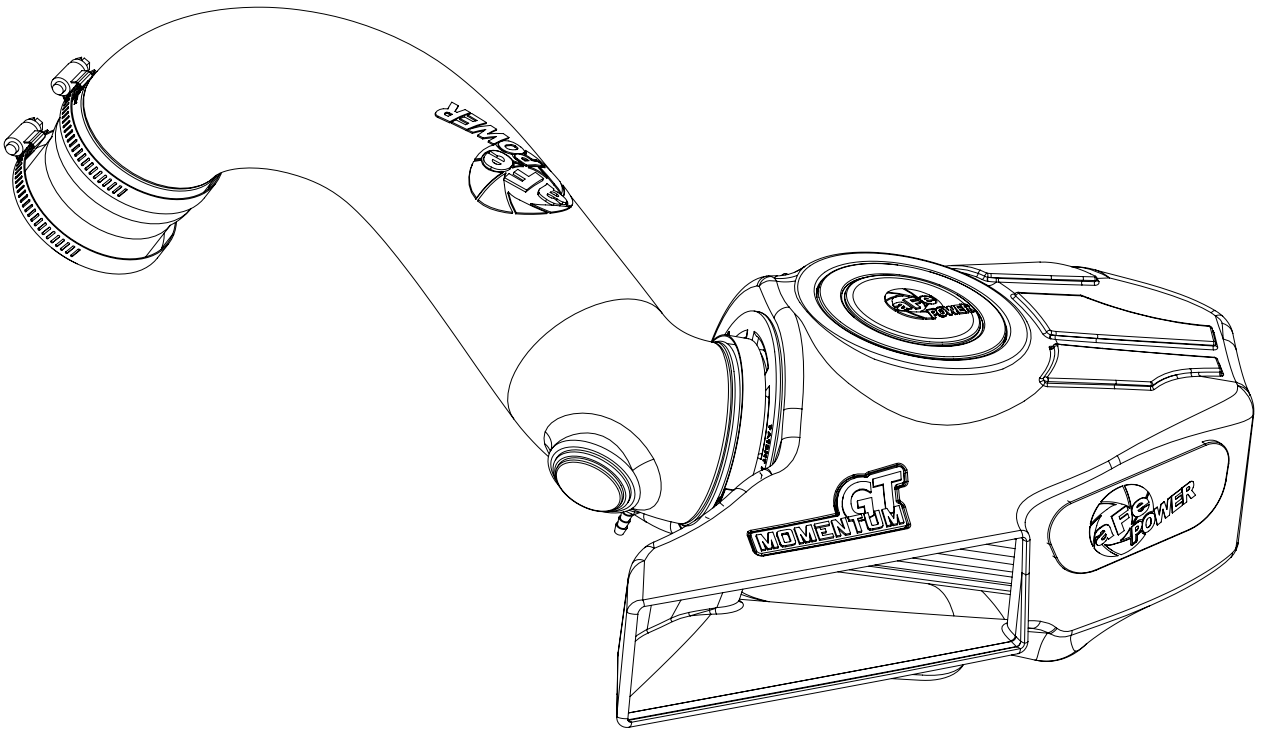
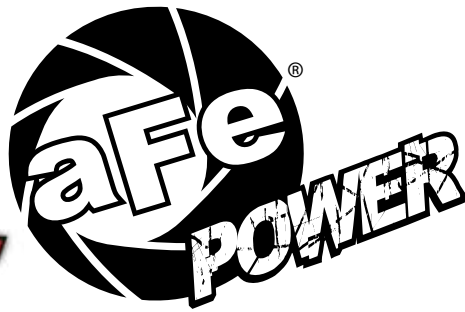


**GT**  
**MOMENTUM**



## advanced FLOW engineering

Cold Air Intake System

Instruction Manual P/N: 50-70036D / 50-70036R

Make: <b>Audi</b>	Model: <b>A3</b>	Year: <b>2015-2018</b>	Engine: <b>L4-1.8L Turbo</b>
Make: <b>Audi</b>	Model: <b>A3</b>	Year: <b>2017-2020</b>	Engine: <b>L4-2.0L Turbo</b>
Make: <b>Audi</b>	Model: <b>A3 Quattro</b>	Year: <b>2015-2020</b>	Engine: <b>L4-2.0L Turbo</b>
Make: <b>VW</b>	Model: <b>Golf</b>	Year: <b>2015-2018</b>	Engine: <b>L4-1.8L Turbo</b>
Make: <b>VW</b>	Model: <b>Golf R</b>	Year: <b>2015-2019</b>	Engine: <b>L4-2.0L Turbo</b>
Make: <b>VW</b>	Model: <b>GTI</b>	Year: <b>2015-2021</b>	Engine: <b>L4-2.0L Turbo</b>
Make: <b>VW</b>	Model: <b>Jetta GLI</b>	Year: <b>2019-2023</b>	Engine: <b>L4-2.0L Turbo</b>

- Please read the entire instruction manual before proceeding.
- Ensure all components listed are present.
- If you are missing any of the components, call customer support at 951-493-7100.
- Ensure you have all necessary tools before proceeding.
- Do not attempt to work on your vehicle when the engine is hot.



## Retain factory parts for future use.

Label	Qty.	Description	Part Number
A1	1	Air Filter (Pro 5R)	24-91103
A2	1	Air Filter (Pro DRY S)	21-91103
B	1	Tube	05-76403B1
C	1	Housing	05-5070036B2
D	1	Cap	03-50179
E	1	Coupling, Reducer	05-01196
F	1	Fitting, Smog Pump	05-01096
G	1	Grommet	03-50139
H	1	Clamp #048	03-50007
I	1	Clamp #044	03-50019
J	3	Grommet, Rubber	03-50647
K	1	Nipple, Brass Hose	03-50194
L	1	Plug, Air Box	05-00937

Installation will require the following tools:

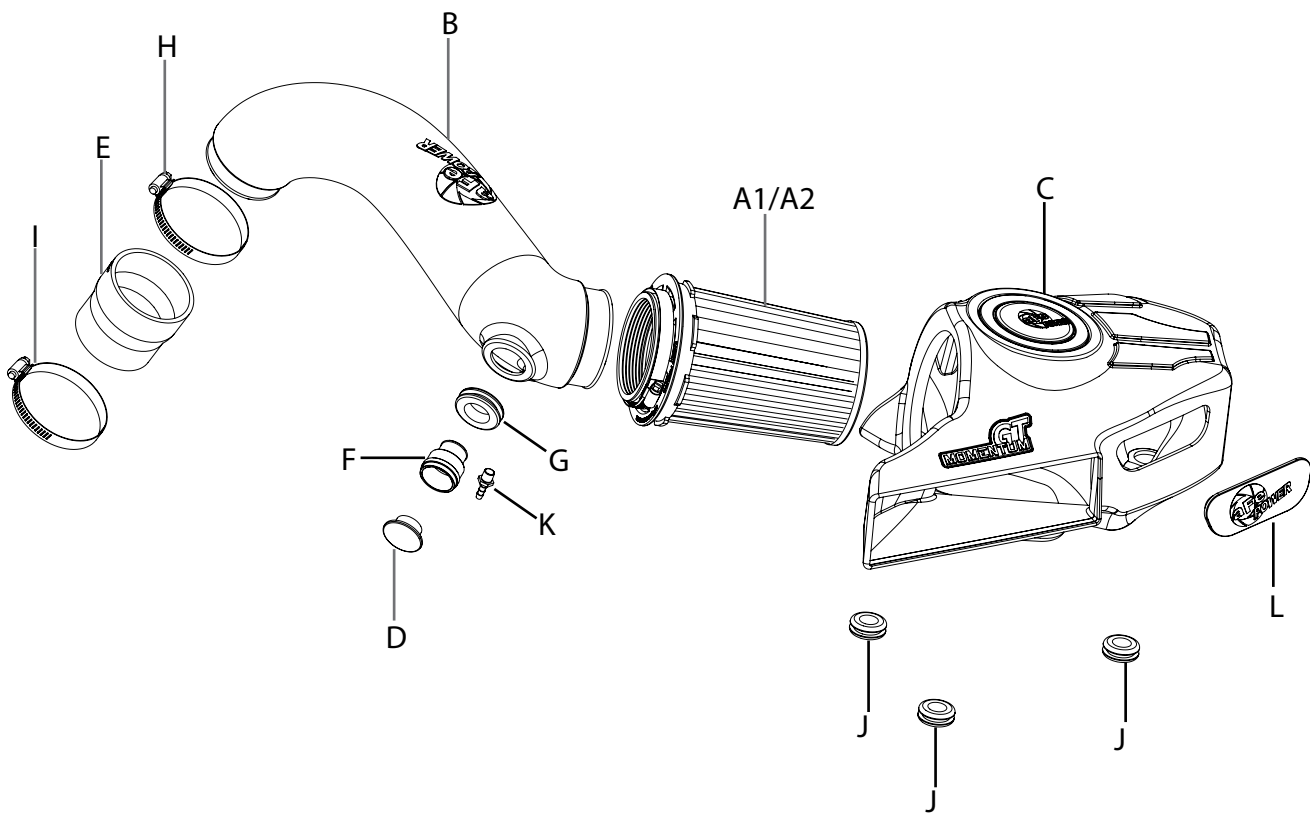
8mm nut driver, 1/4" Socket Wrench, 13mm deep socket and T25 Torx driver.

Recommended: Silicone Lubricant

Warranty Information available at: <https://afepower.com/contact#warranty>

Emissions Disclaimer:

This product is not currently CARB exempt and is not available for purchase in California or for use on any vehicle registered with the California Department of Motor Vehicles.



**Figure A**

Refer to Figure A for Steps 1-4

Step 1: Disconnect the smog pump connector ① from the factory intake housing. (If applicable)

Step 2: Disconnect the rubber crank case breather tube ② from the factory intake housing.

Step 3: Loosen the clamp ③ connecting the factory intake tube to the turbo.

Step 4: Carefully lift and remove the entire factory intake assembly.

NOTE: Alternately, the top half of the factory air box can be removed with a T25 Torx screwdriver.



Figure B

Refer to Figure B for Step 5

Step 5: Install the three (x3) provided rubber grommets (4) on the bottom of the aFe POWER air box as shown.



Figure C

Refer to Figure C for Steps 6-7

Step 6: Install the grommet (5). Use the plastic block off cap (6). (For vehicles not equipped w/ a smog pump) or the metal fitting (7) for vehicles that are equipped w/ a smog pump).

Step 7. Install the 3/16" brass fitting into the tube (8).

INSTALL



Figure D

Refer to Figure D for Steps 8-9

Step 8: Insert the tube into the filter and tighten the clamp at this time.

Step 9: Then insert the tube & filter both into the housing by pressing while rotating until you feel and/or hear all six (x6) of the tabs seat themselves into the flange.





Figure E

Refer to Figure E for Steps 10-12

Step 10: Install the provided reducer coupling ⑨ and smaller clamp (#044) ⑩ onto the turbo inlet pipe.

Step 11: Tighten clamp at this time.

Step 12: Slip the (#048) clamp ⑪ onto the coupling, but do not tighten at this time.



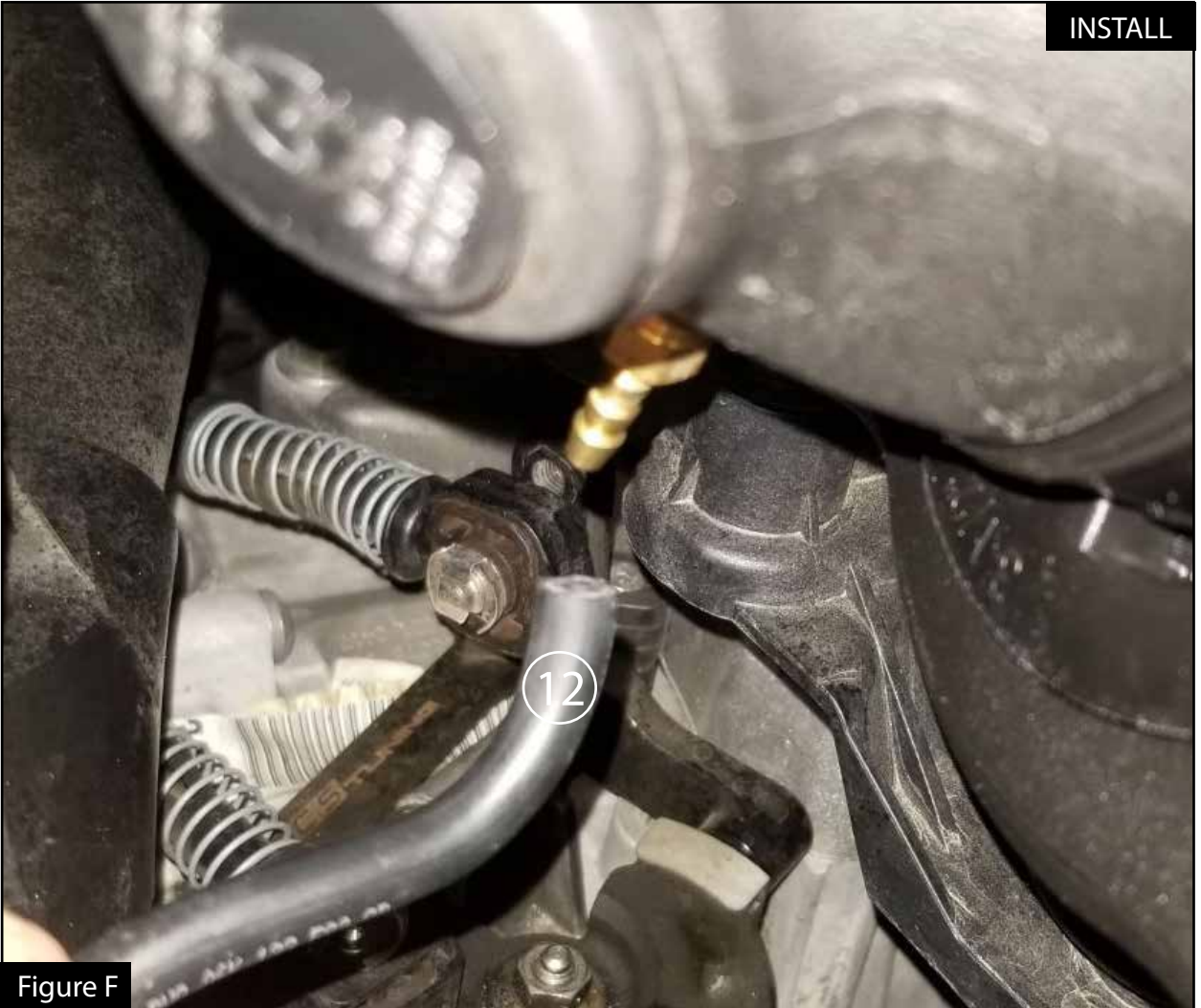


Figure F

Refer to Figure F for Step 13

Step 13: Place the entire intake assembly in the engine as shown and re-attach the rubber breather hose

⑫.

NOTE: A small amount of lubricant on the brass fitting may help the rubber hose to slip over the brass fitting.



Figure G

Refer to Figure G for Steps 14-18

Step 14: Lower the intake assembly over the three (x3) factory mounting locations and firmly press down on the air box.

Step 15: Next, rotate the tube down into the coupling over the turbo inlet pipe.

Step 16: Align tube where it does not touch anything and tighten the (#048) clamp (13).

Step 17: Connect the smog pump hose to the aluminum fitting (14).

Step 18: Confirm all connections are secure and clamps tightened. Your installation is now complete.

Thank you for choosing aFe POWER!

NOTE: Check all bolts, clamps, and connectors after 100-200 miles.

Page left blank intentionally



**advanced FLOW engineering, inc.**

Corona, CA 92879

<https://afepower.com/contact>