

advanced FLOW engineering

Cold Air Intake System

Instruction Manual P/N: 50-70088D / 50-70088R

Make: VOLKSWAGEN

Model: TIGUAN

Year: 2018-2023

Engine: L4-2.0L (t)

Make: AUDI

Model: Q3

Year: 2020-2022

Engine: L4-2.0L (t) (40 TFSI)



- Please read the entire instruction manual before proceeding.
- Ensure all components listed are present.
- For technical support please call 951-493-7185.
- Ensure you have all necessary tools before proceeding.
- Do not attempt to work on your vehicle when the engine is hot.
- Retain factory parts for future use.

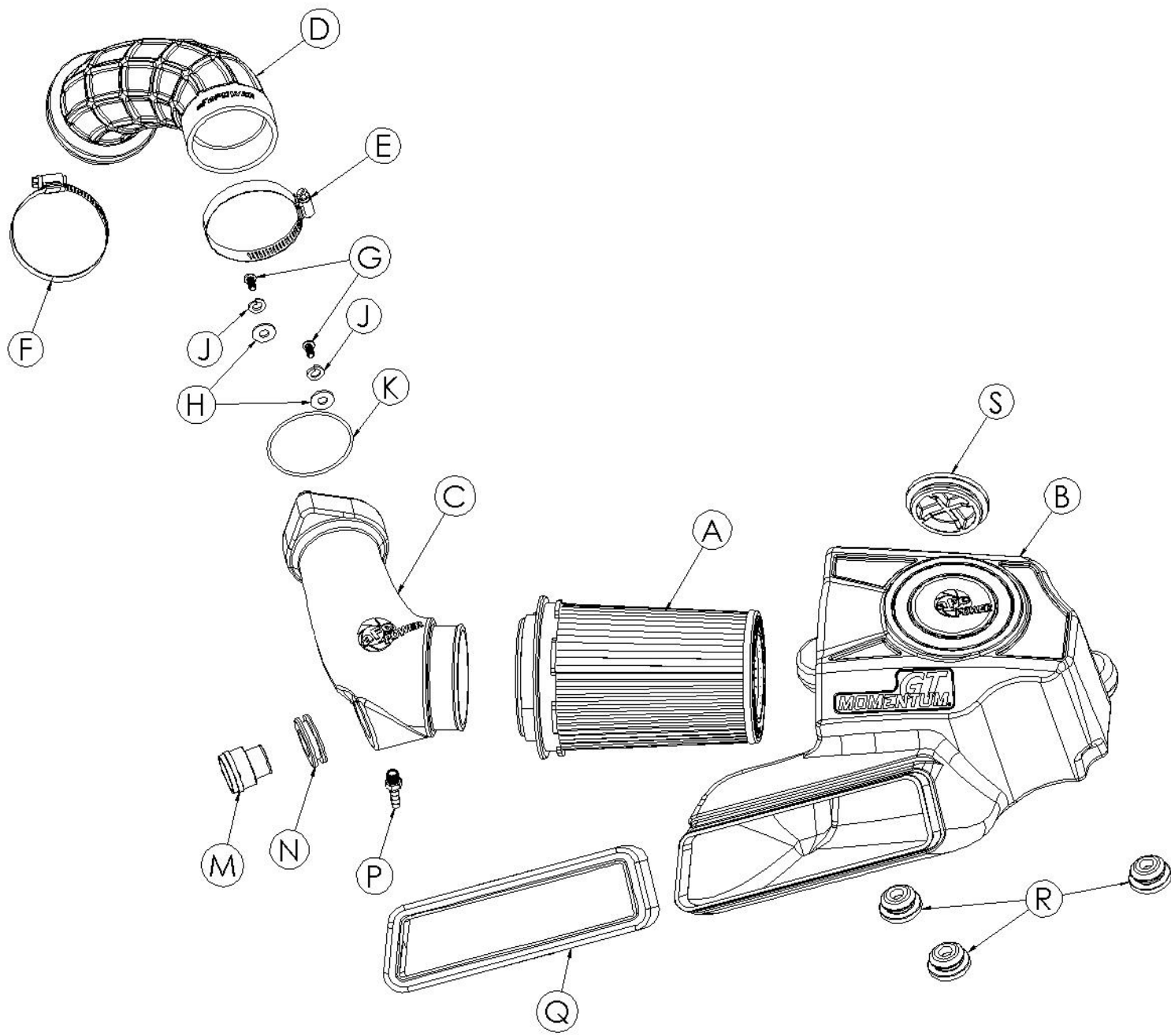
Label	Qty.	Description	Part Number
A1	1	Air Filter (Pro 5R)	24-91103
A2	1	Air Filter (Pro DRY S)	21-91103
B	1	Housing	05-5070087B2
C	1	Intake Tube	05-5070088B1
D	1	Coupling, Silicone Elbow	05-01729
E	1	Clamp, #048	03-50007
F	1	Clamp, #044	03-50019
G	2	Screw, Button Head: M6x1x12	03-50102
H	2	Flat Washer, M6	03-50070
J	2	Lock Washer, M6	03-50071
K	1	O-Ring (-148)	03-50776
M	1	Fitting, Smog Pump	05-01096
N	1	Grommet, Smog Pump Fitting	03-50139
P	1	Hose Nipple, Brass: 1/4" ID	03-50194
Q	1	Inlet Trim, EPDM	05-01657
R	3	Grommet, Mounting	03-50647
S	1	Plug, Silicone	05-01482

Installation will require the following tools:

7mm, 8mm, 1/2" deep sockets and driver, Channel Locks or Hose Clamp Pliers, T25 Torx driver, 4mm allen key

Warranty Information available at <https://afepower.com/contact#warranty>

Emissions Disclaimer: This product is not currently CARB exempt and is not available for purchase in California or for use on any vehicle registered with the California Department of Motor Vehicles.



**Figure A****Refer to Figure A for Step 1**

Step 1: Remove the engine cover ① by pulling straight up off the four (4x) mounting grommets.

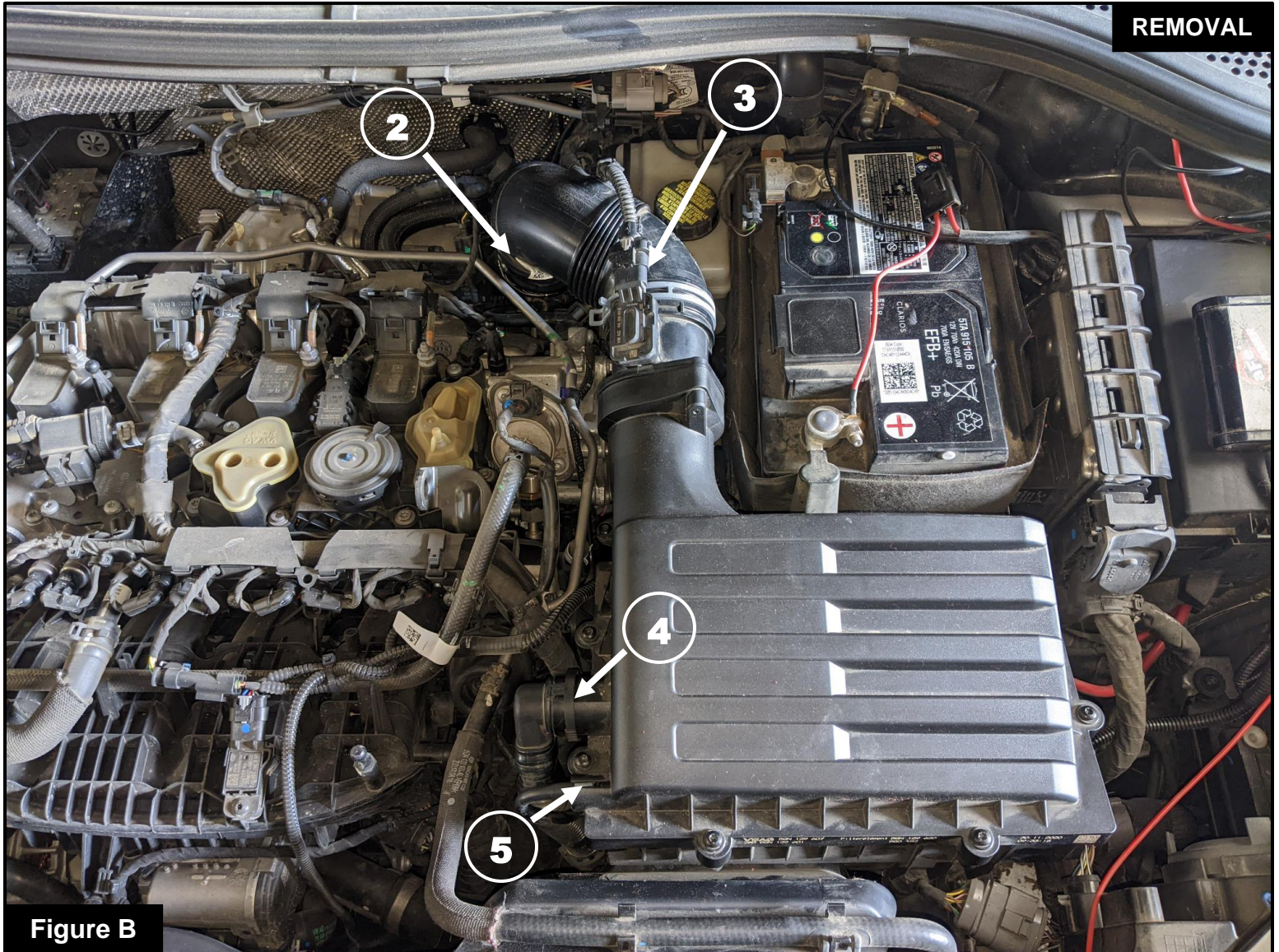


Figure B

Refer to Figure B for Steps 2-6

Step 2: Using a 7mm socket and driver, loosen the clamp ② at the turbo inlet pipe.

Step 3: Disconnect the Mass Airflow (MAF) sensor ③.

Step 4: Disconnect the smog pump fitting ④ from the side of the factory airbox.

Step 5: Disconnect the small CCV line ⑤ from the side of the factory airbox.

Step 6: Remove the entire stock intake system by disconnecting the intake tube from the turbo inlet, then pulling straight up off the mounting grommets and rotating out of the inlet scoop.

**Figure C****Refer to Figure C for Step 7**

Step 7: With the factory intake out of the vehicle, use a pair of hose clamp pliers or channel locks to loosen the clamp ⑥ on the factory MAF sensor cartridge and disconnect the intake tube.

**Figure D****Refer to Figure D for Step 8**

Step 8: Using a T25 Torx driver, remove the screw ⑦ securing the MAF cartridge. Rotate the cartridge counterclockwise to remove it from the factory airbox.



Figure E

Refer to Figure E for Step 9

Step 9: Install the supplied rubber inlet trim (8) onto the inlet of your aFe POWER housing.

**Figure F****Refer to Figure F for Step 10**

Step 10: Install the three (3x) supplied grommets (9) into the holes on the bottom of your aFe POWER housing.

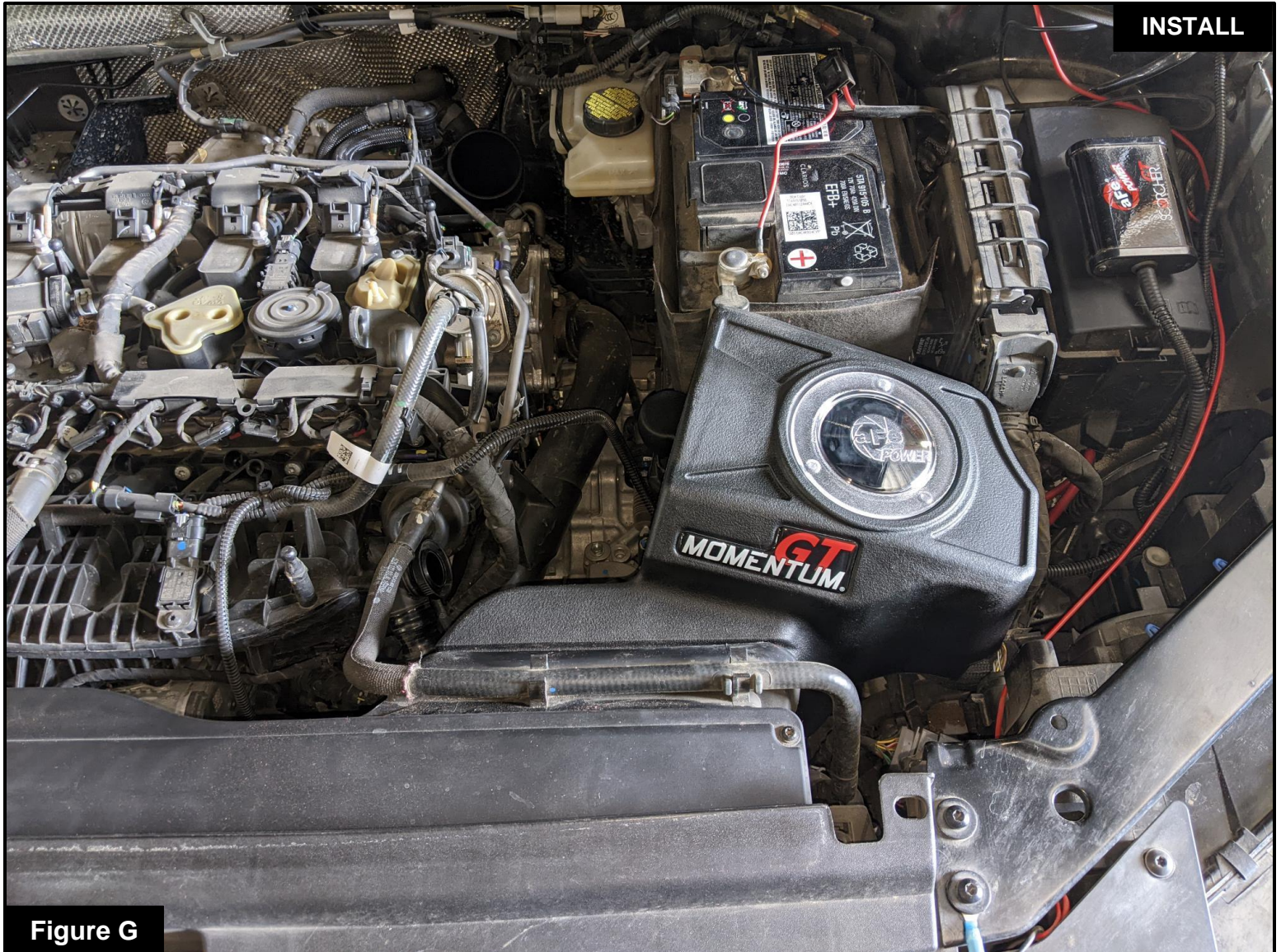


Figure G

Refer to Figure G for Step 11

Step 11: Install your aFe POWER housing into the vehicle by sliding the front inlet onto the factory scoop, then rotating the housing down onto the mounting points. Press firmly to lock the grommets onto the mounting pegs.

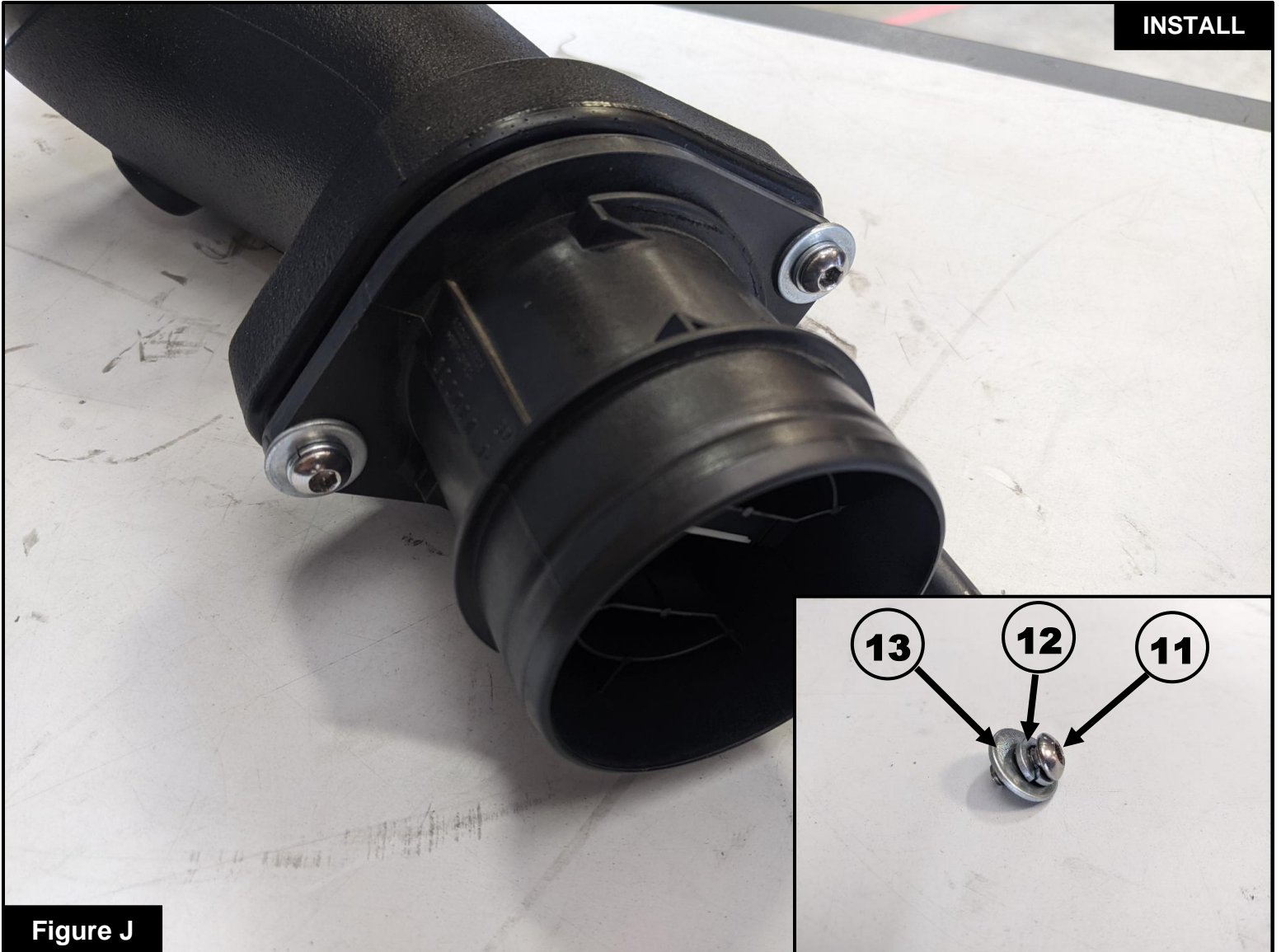


Refer to Figure H for Step 12

Step 12: Install your aFe POWER air filter into the filter housing by firmly pressing it into the opening until the small tabs are locked on the inside of the housing. Leave the clamp loose on the filter opening.

**Figure I****Refer to Figure I for Step 13**

Step 13: Install the supplied O-Ring (10) onto the inlet side of the MAF sensor cartridge as shown.

**Figure J****Refer to Figure J for Steps 14-15**

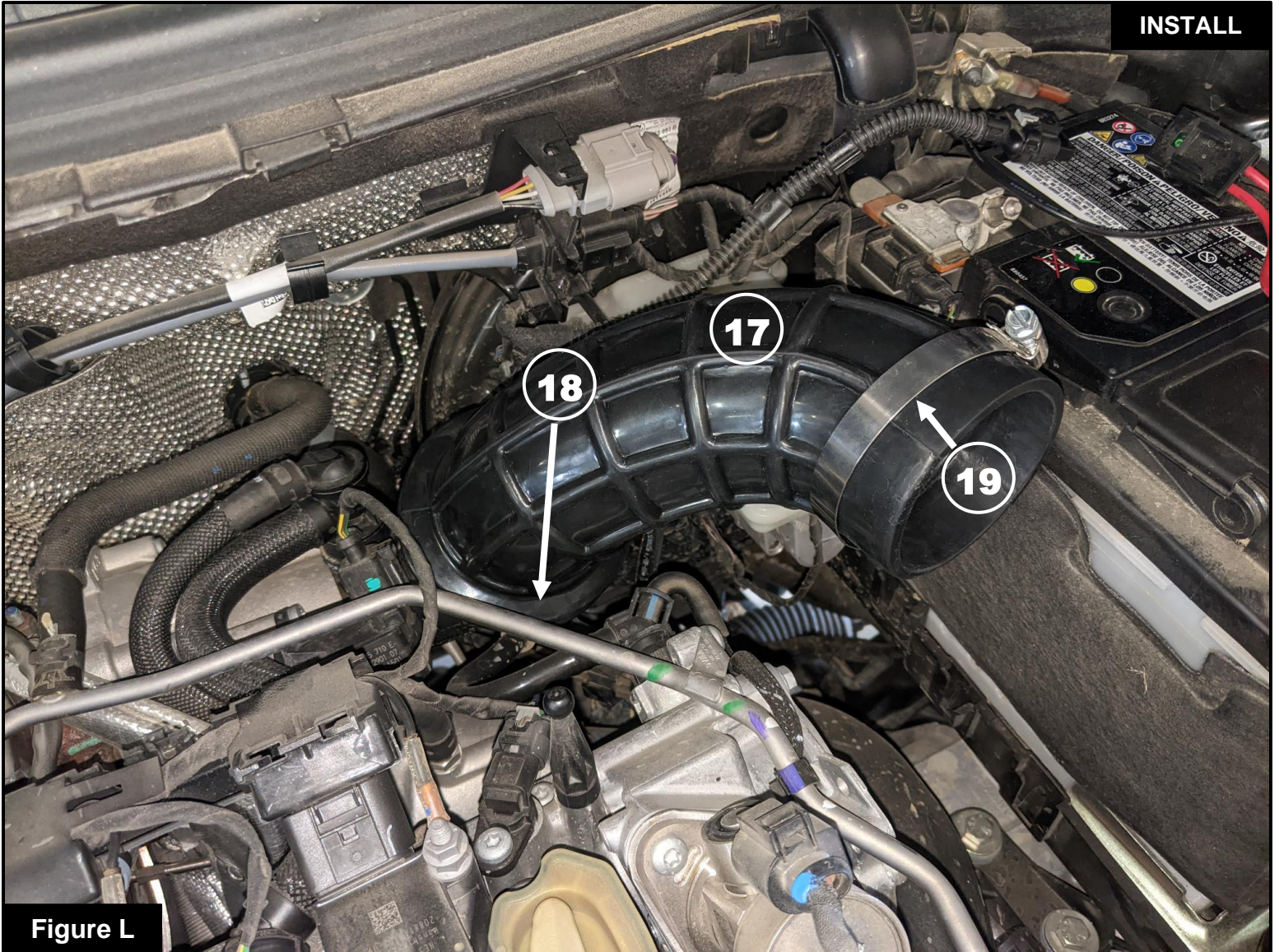
Step 14: Insert the MAF cartridge into your aFe POWER intake tube as shown. Rotate the cartridge until the mounting locations line up with the inserts on the intake tube. The O-Ring on the tube should rest inside the inner chamfered edge of the aFe POWER intake tube.

Step 15: Secure the MAF cartridge in place using the supplied button head screws and washers. Insert the screw (11) first through the lock washer (12) then through the flat washer (13) then into the inserts on the aFe POWER intake tube. Tighten the screws using a 4mm allen key.

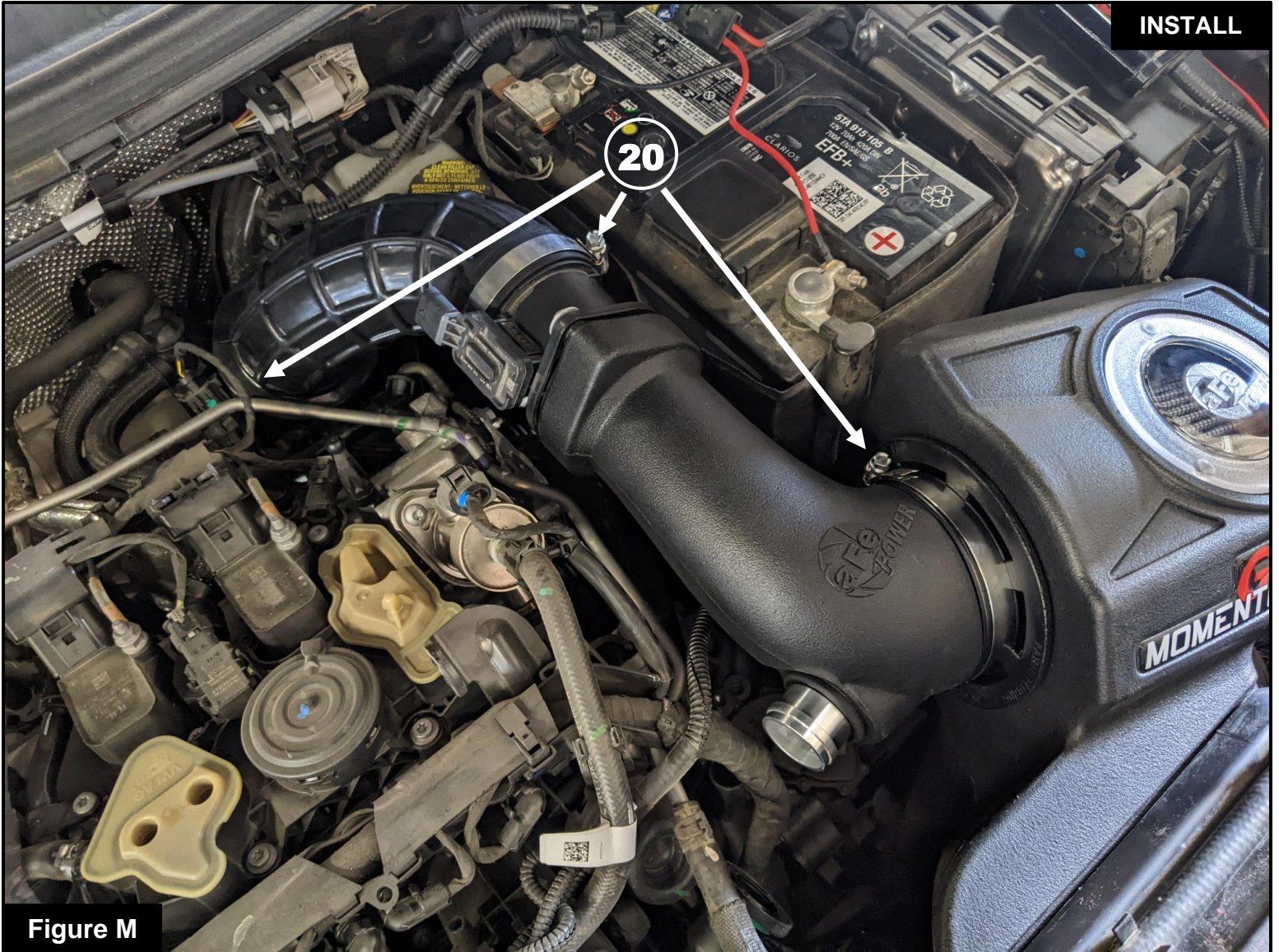
**Figure K****Refer to Figure K for Steps 16-17**

Step 16: Install the supplied 1" ID grommet (14) into the opening on your aFe POWER intake tube, then press the supplied aluminum fitting (15) into the grommet. Make sure the fitting is fully seated in the grommet for a good seal.

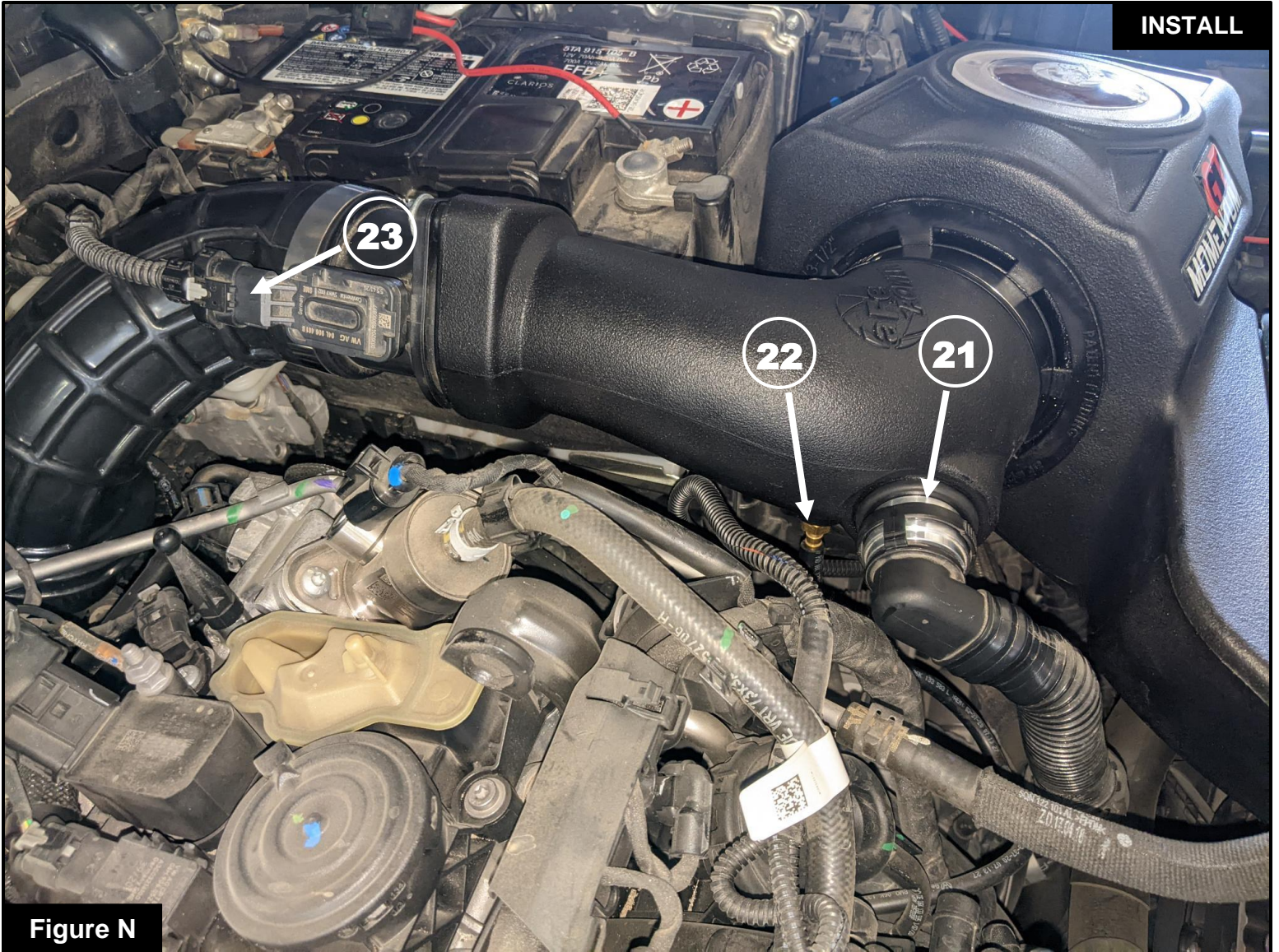
Step 17: Install the supplied ¼" brass hose nipple (16) into the threaded insert on the bottom of the intake tube. Use a ½" deep socket and driver to tighten the fitting. *This is an NPT style fitting – some threads will still be exposed when the fitting is fully tightened. Do not overtighten the fitting or you risk stripping the insert out of the plastic*

**Figure L****Refer to Figure L for Step 18**

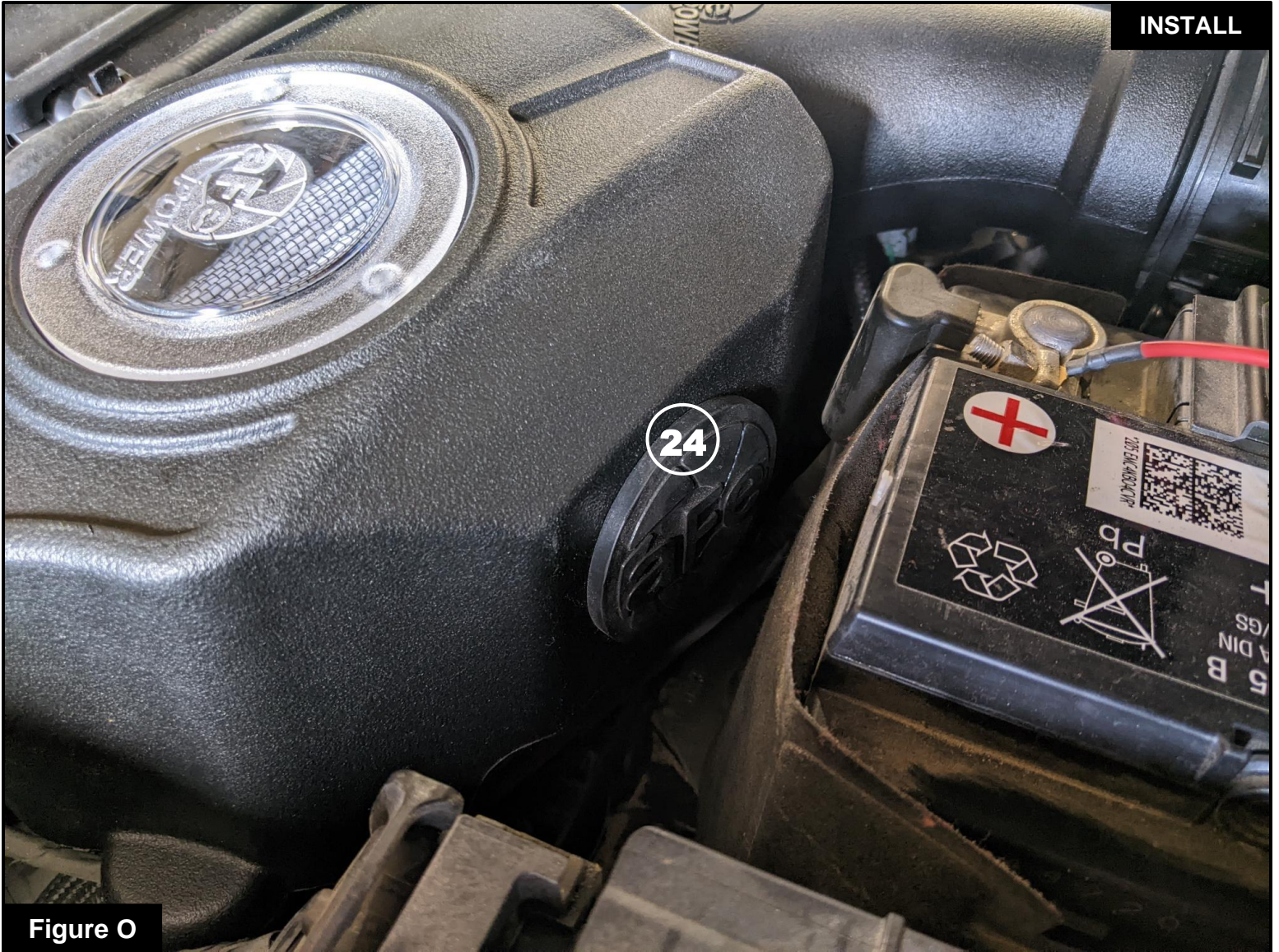
Step 18: Install the supplied coupling (17) and #044 clamp (18) onto your turbo inlet with the bellows near the turbo. Place the #048 clamp (19) loosely on the open end of the coupling. Leave both clamps loose.

**Figure M****Refer to Figure M for Step 19**

Step 19: Install your aFe POWER intake tube and MAF cartridge assembly first into the air filter, then rotating down to the turbo inlet coupling. Once aligned, tighten all three (3x) clamps ②0 using an 8 mm socket and driver.

**Figure N****Refer to Figure N for Steps 20-22**

- Step 20: Reconnect the smog pump hose (21) to the fitting on the side of your aFe POWER intake tube.
- Step 21: Connect the CCV hose (22) to the barbed fitting on the bottom of your aFe POWER intake tube.
- Step 22: Reconnect the MAF sensor wire harness (23) .

**Figure O****Refer to Figure O for Step 23**

Step 23: **(Optional)** Use the provided plug ②4 to close the additional air inlet if you want to completely seal the filter housing. Best performance is obtained without the plug.

**Figure P****Refer to Figure P for Step 24**

Step 24: Reinstall your engine cover.

Step 25: Check that all components are tight and secure. Your installation is now complete. Thank you for choosing aFe POWER!

NOTE: Check all screws, clamps, and connectors are secure after 100-200 miles.



advanced FLOW engineering, inc.

252 Granite Street Corona, CA 92879

<https://afepower.com/contact>