



advanced FLOW engineering™
 P.O. Box 1719
 Corona, CA 92878
 Support: 951-493-7100
 aFepower.com

Intake Kit Installation Instructions: 2009 Ford F-150; '07-'09 Expedition; '07-'09 Navigator V8-5.4L Stage 2

Kit P/N: 51/54-11622-PV (Polished)
 51/54-11622-B (Wrinkle Blk)

Make: Ford

Model:	Year:	Engine:
F-150	2009	V8-5.4L
Expedition	07-09	V8-5.4L
Navigator	07-09	V8-5.4L

Tools Required:
 5/16" Nut Driver
 4mm or 5/32" Allen Key
 1/4" Nut Driver

Parts List:

1 Air Filter (Pro-SR™ 24-91040 or Pro Dry 5™ 21-90053)	1 Torx Bit, T20
1 Housing	1 Clamp, #064
1 Coupler, Elbow (05-00464)	5 Washers, Wavy M6
1 Coupler, Hump (05-00565)	
1 Tube, Intake 3-1/2"	51/54-11622PV only includes:
1 7/16" Trim Seal @ 24 5/8" L	1 Throttle Body Spacer (46-33002)
1 Adaptor, Filter	
3 Clamp, #056	
5 Screws, Button Head M6	



Complete Kit w/ Parts 51/54-11622-PV

Step 1



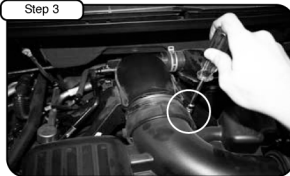
Complete Stock Intake.
 Disconnect the battery.

Step 2



Disconnect the MAF sensor harness. Loosen the clamp on the airbox tube using a 5/16" nut driver.

Step 3



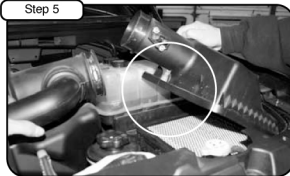
Loosen the clamp on the throttle body tube using a 5/16" nut driver.

Step 4



Disengage the 3 clips which secure the upper portion of the airbox. Remove the center clip which is not used with the aFe intake.

Step 5



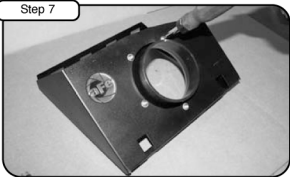
Remove the upper portion of the airbox from vehicle.

Step 6



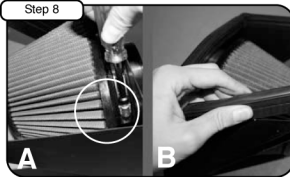
Remove the stock intake tube from the vehicle.

Step 7



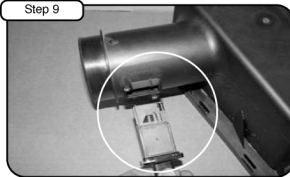
Attach the filter adaptor to the new housing using button head screws provided and tighten using a 4mm allen key.

Step 8



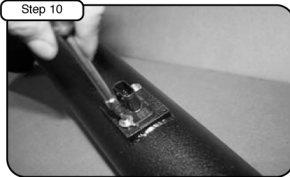
A) Attach the air filter to the adaptor and tighten using a 5/16" nut driver. B) Attach trim seal to housing.

Step 9



Remove the MAF sensor from the airbox using a T-20 torx bit and save hardware for later install.

Step 10



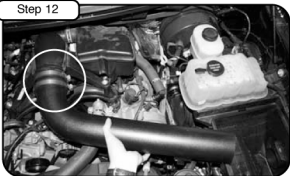
Install the MAF sensor into the new tube using the screws removed in step 9.

Step 11



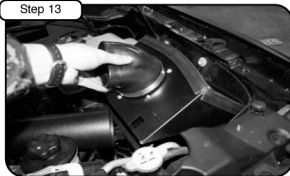
Attach the coupler with the clamps provided to the filter adaptor. Do not tighten clamps.

Step 12



Attach the intake tube to the vehicle with the straight coupler and clamps provided. Do not tighten clamps.

Step 13



Install the new housing into vehicle. Engage the clips, secure housing and connect the intake tube to coupler.

Step 14



Position tube and tighten all clamps using 5/16" nut driver. Re-connect MAF sensor harness.

Step 15



Your intake is now complete. Please check all clamps periodically and tighten as needed. Thank you for choosing aFe power.