



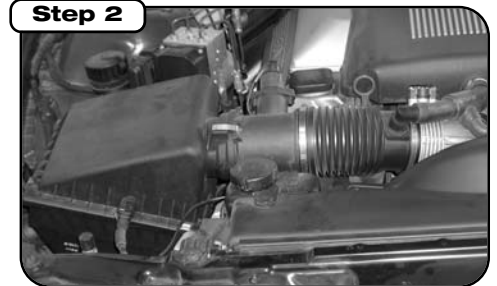
P.O. Box 1719
 Corona, CA 92878
 Support: 951-493-7100
 www.aFeFilters.com

Intake Kit Installation Instructions: '97-'03 BMW E39 540i V8-4.4L

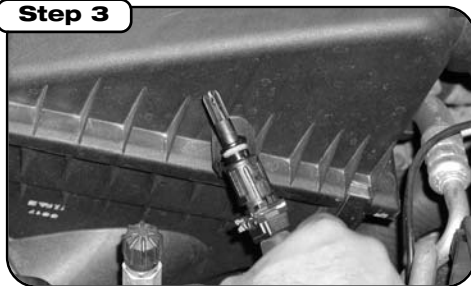
Kit Part #	51/54-10471	Tools Required:	Part List:	1 Rubber grommet
Make:	BMW	5/16" socket, nut-driver	1 Filter part # 24-91007 (Replacement Filter) or Pro Dry S™ 21-90015	1 Rubber coupler
Model	Year	Engine	1 M6 x 1 x 12mm hex head screw	1 #64 clamp
540i	'97-'03	V8-4.4L	1 M6 lock washer	1 #72 clamp
			1 M6 washer	1 7/16" trim seal @ 28"L
			5 M6 x 1 x 10mm button head	
			1 Filter adapter, 3-angle	
			1 Filter shield	



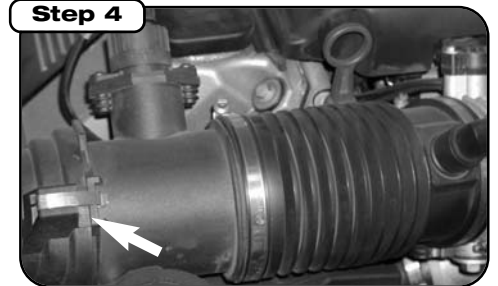
Complete kit with parts.



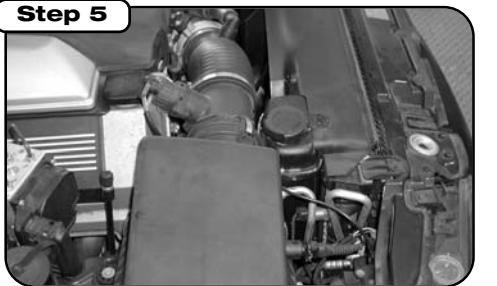
Complete stock intake.



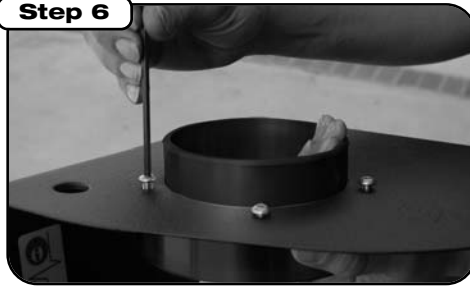
Remove temperature sensor from stock air box



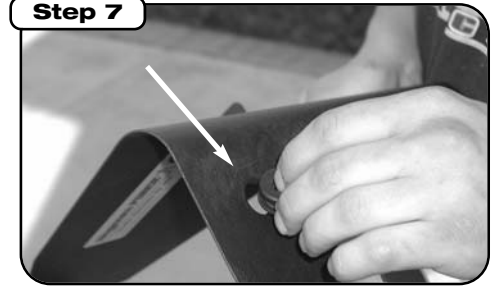
Remove 2 spring clips that connect the mass flow sensor to the stock air box.



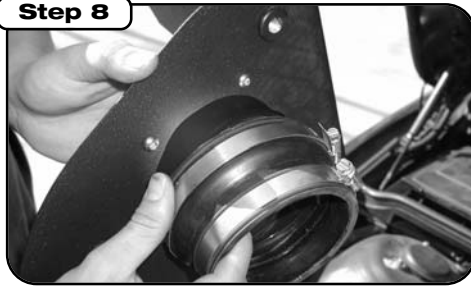
Remove bolt with 10mm socket or wrench and remove air box from engine.



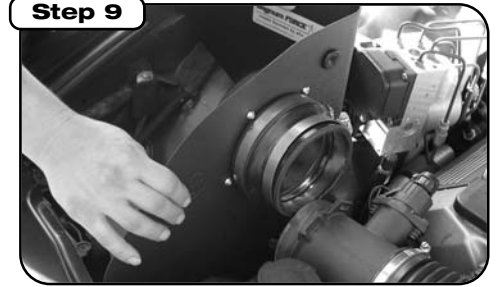
Assemble 3-angle filter adapter to shield using 5 button head screws.



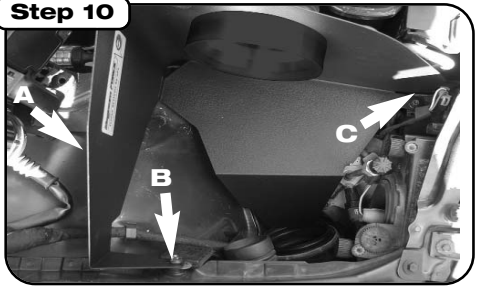
Insert rubber grommet.



Slip on rubber adapter (do not tighten).



Install shield into vehicle.



A- Use provided 6mm screw, washer and lock washer (10mm) B Use factory nut (10mm) C Use factory screw (8mm)



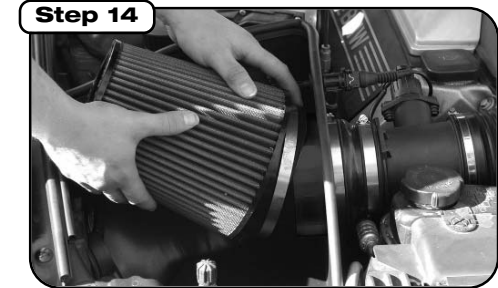
Tighten down 2 clamps that are used on the rubber adapter.



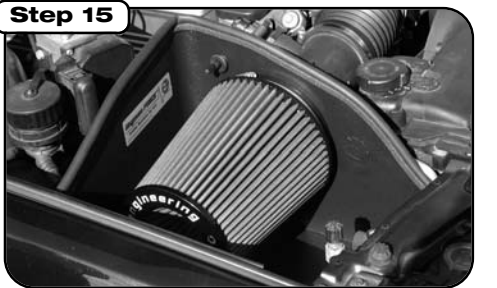
Install temperature sensor.



Install trim seal.



Install filter.



Place enclosed CARB EO sticker on a clean/smooth surface on or near the intake system. EO identification label is required in passing the Smog Check inspection. Make sure all hoses and clamps are tight and that all electrical components are secure.

Note: Filter Cleaning and Re-oiling: When cleaning your aFe filter, be sure to use only aFe's "Restore Kit" (aFe P/N: 90-50001 blue oil aerosol, or aFe P/N: 90-50501 blue squeeze bottle oil). Filter Replacement: PN: 24-91007 (black w/blue media). **Pro Dry S™** P/N: 21-90015 (black w/white media) **Pro Dry S™** cleaning: see cleaning instruction sheet 06-00074.