

advanced FLOW engineering

Cold Air Intake System

Instruction Manual P/N: 54-11052/ 54-11052

Make: Toyota
Make: Toyota

Model: Tacoma
Model: Tacoma

Year: 1999-2004
Year: 1999-2004

Engine: L4-2.4L
Engine: L4-2.7L



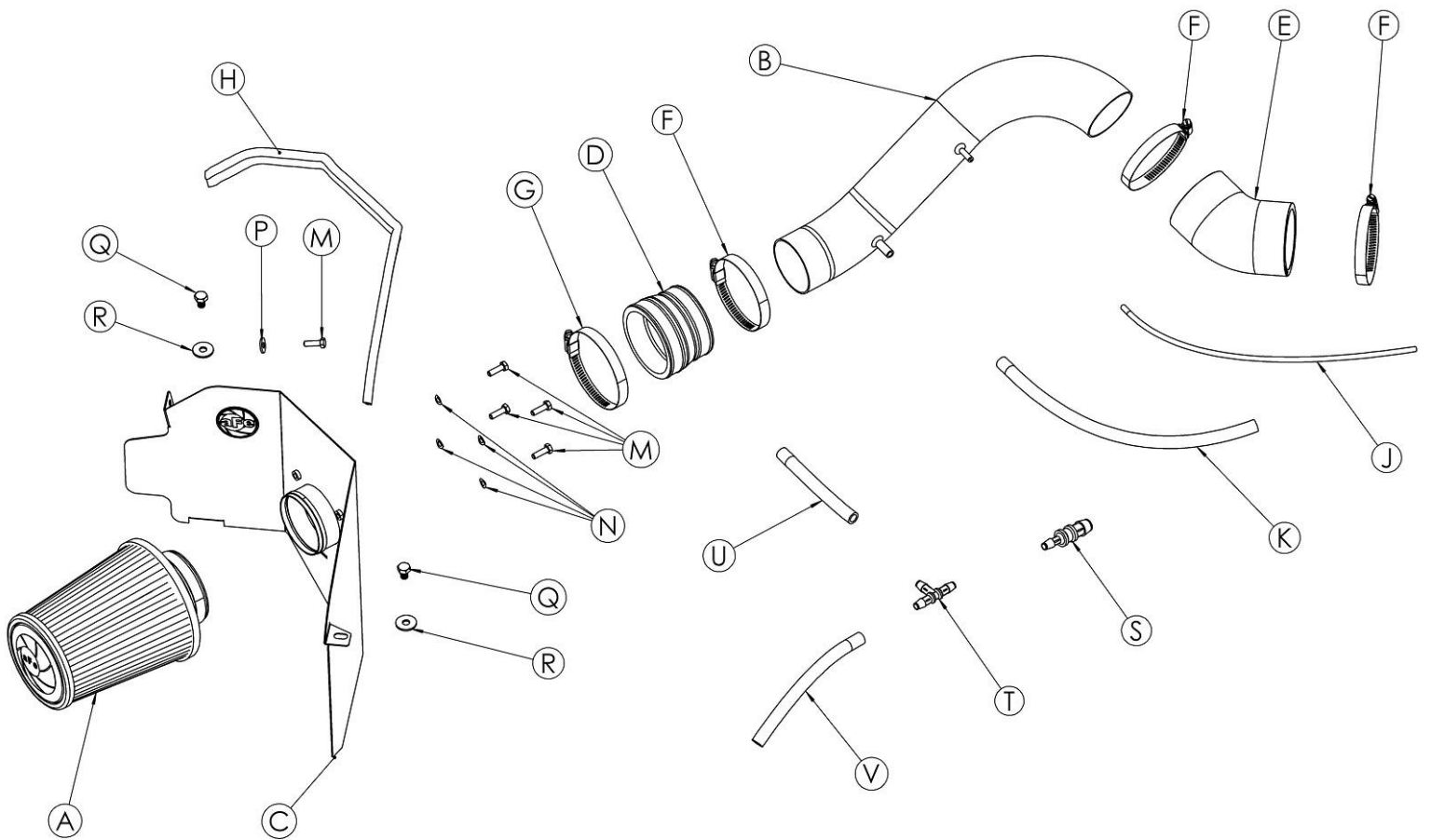
- Please read the entire instruction manual before proceeding.
- Ensure all components listed are present.
- For technical support please call at 951-493-7185.
- Ensure you have all necessary tools before proceeding.
- Do not attempt to work on your vehicle when the engine is hot.
- Retain factory parts for future use.

Label	Qty.	Description	Part Number
A	1	Air Filter (Pro DRY S) for 51-11052	21-30018
A	1	Air Filter (Pro 5R) for 54-11052	24-30018
B	1	Tube: 54-11052	05-00804
C	1	Housing: 54-11052	05-00802
D	1	Coupling, Reducer: (3-1/8" x 2-3/4") ID x 2-1/2"L	05-00824
E	1	Coupling, Elbow: 2-3/4"D x 45 Deg	05-00135
F	3	Clamp, #48	03-50007
G	1	Clamp, #52	03-50008
H	1	Seal, Trim: 3/4" Bulb, 3/32" Edge Thk (21" Length)	05-00007
J	1	Hose, Vacuum: 5/32" ID, Black (17" Length)	05-00122
K	1	Hose, Silicone: 3/8" (17" Length)	05-01503
M	5	Screw, Hex Hd: M6x1x16mm	03-50052
N	4	Washer, Wavy: M6	03-50058
P	1	Washer, Flat: M6	03-50070
Q	2	Screw, Hex Hd: M8x1.25x12mm	03-50031
R	2	Washer, Flat: 24mm OD x M8 ID	03-50065
S	1	Fitting, Straight Reducer: 5/8" x 3/8"	03-50828*
T	1	Tee Connector: 3/8"	03-50279*
U	1	Hose, Silicone: 3/8" (5" Length)	05-01503*
V	1	Hose, Silicone: 3/8" (16" Length)	05-01503*

* Those parts are only used if the vehicle is equipped with the Idle Air Control Valve (IACV)

Installation will require the following tools: 12mm, 10mm, 5/16" Nut driver, Flathead Screwdriver, Pliers.

Warranty information available at <https://afepower.com/contact#warranty>.



**Figure A****Refer to Figure A for Steps 1-2**

Step 1: If the vehicle is equipped with an Idle Air Control Valve (IACV), pinch the clamp to loosen it and remove the hose from the factory tube.

Step 2: Loosen the clamp on the throttle body.

**Figure B****Refer to Figure B for Steps 3-4**

Step 3: Disconnect Mass Air Flow (MAF) sensor connector.

Step 4: Loosen the clamp on the MAF sensor adaptor.

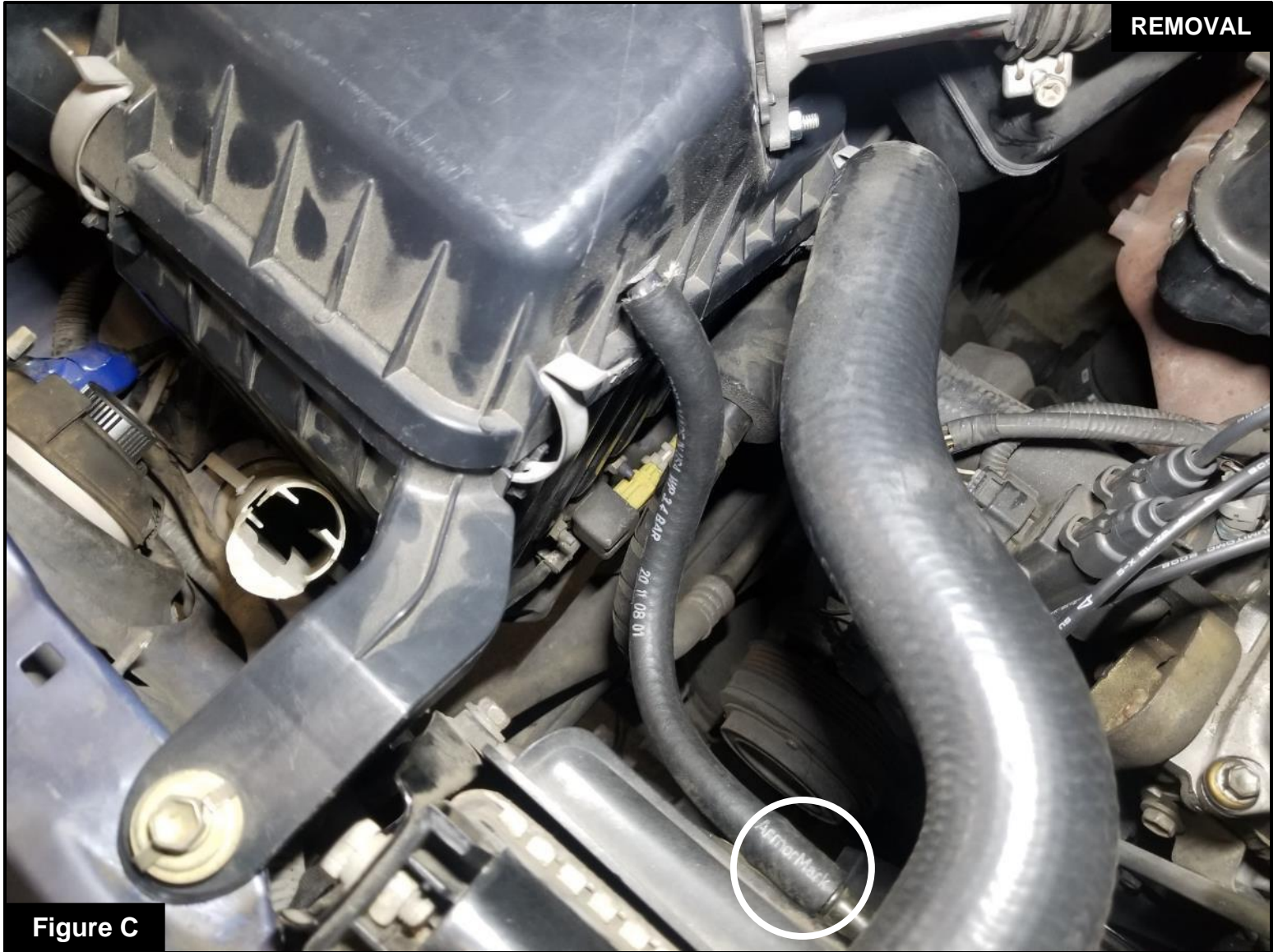


Figure C

Refer to Figure C for Step 5

Step 5: Detach the hose from the hardline.



Figure D

Refer to Figure D for Steps 6-7

Step 6: Detach the vacuum hose from the fuel pressure regulator.

Step 7: Remove the factory tube from the engine bay.



Figure E

Refer to Figure E for Steps 8-9

Step 8: Remove the three (3) 12mm bolts from the factory housing.

Step 9: Lift up on the factory housing to remove it from the engine bay.



Refer to Figure F for Step 10

Step 10: Transfer the factory MAF sensor adaptor and gasket from the factory housing onto the aFe POWER housing. Secure it using the supplied screw and washers.



Figure G

Refer to Figure G for Steps 11-12

Step 11: Install the aFe POWER filter and tighten the clamp.

Step 12: Install the provided seal trim onto the aFe POWER housing.

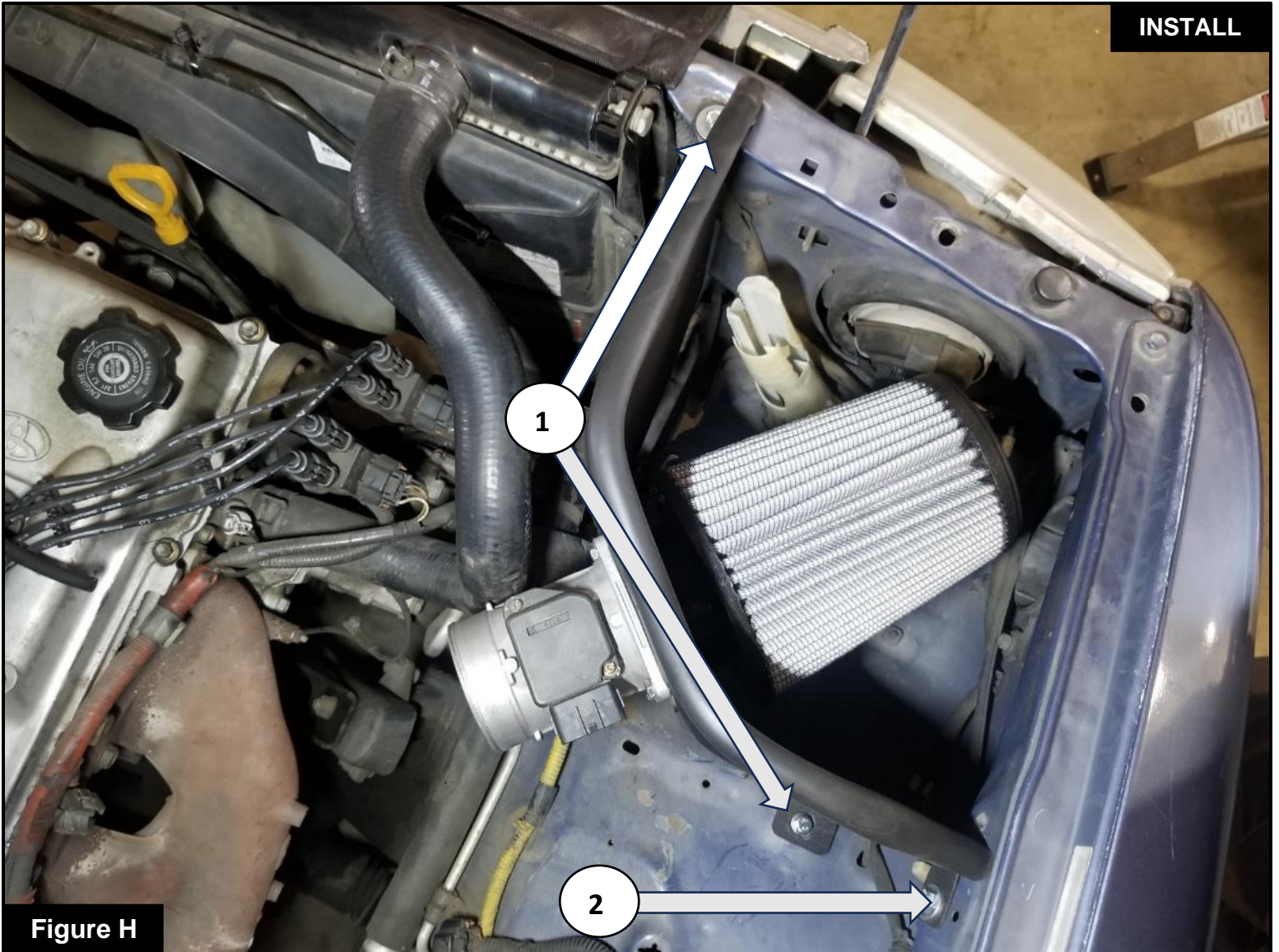


Figure H

Refer to Figure H for Step 13

Step 13: Secure the aFe POWER housing with the supplied M8 bolts and washers (1) and the supplied M6 bolt and washer. (2)



Figure I

Refer to Figure I for Step 14

Step 14: Install the supplied couplings and clamps onto the aFe POWER tube. Do not tighten clamps at this time.

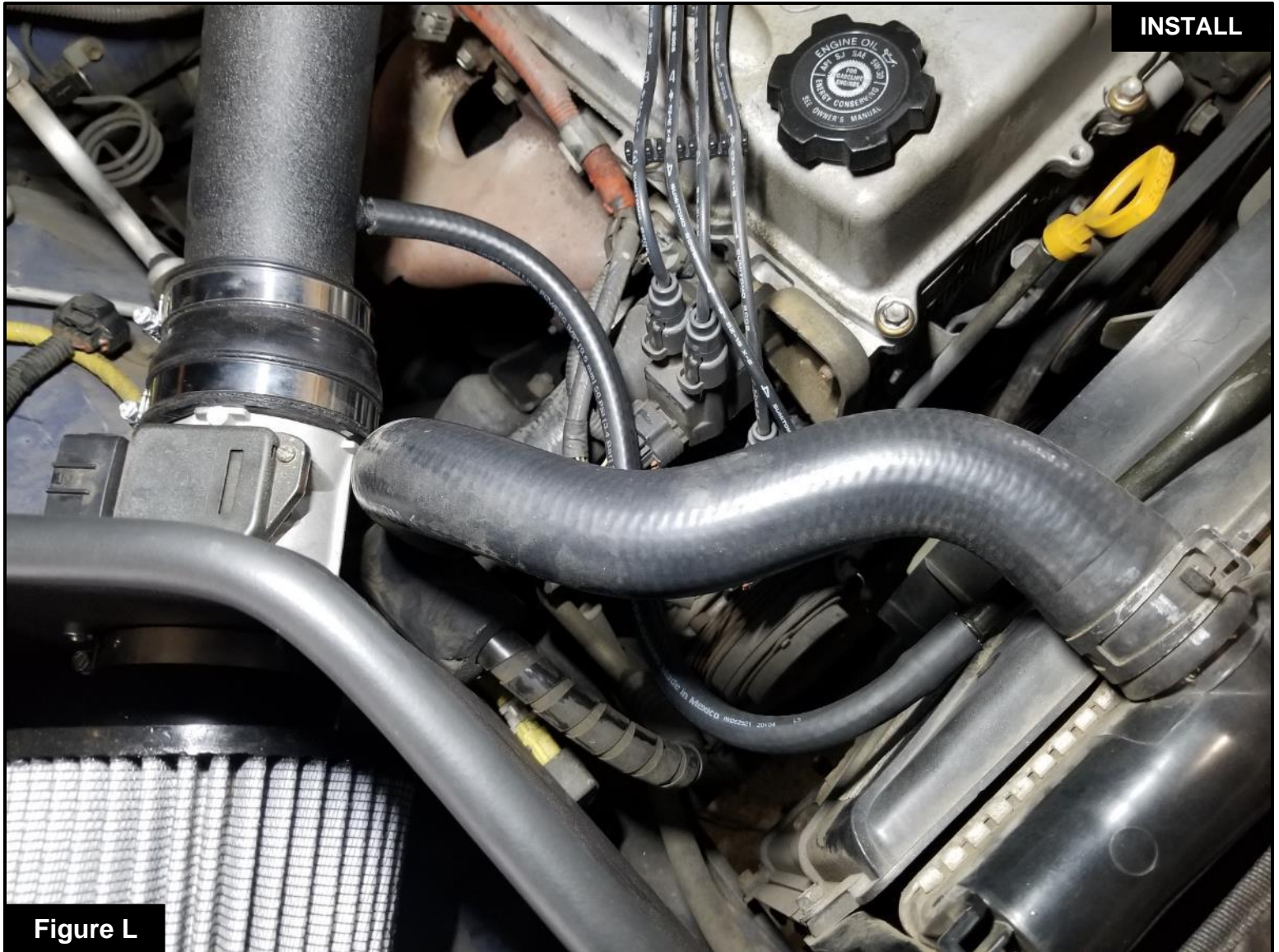
**Figure J****Refer to Figure J for Steps 15-16**

Step 15: Slip the aFe POWER tube and couplings onto the MAF sensor adaptor and throttle body.

Step 16: Align the tube then tighten all clamps.

**Figure K****Refer to Figure K for Step 17**

Step 17: Connect the supplied 5/32" ID hose between the fuel pressure regulator (disconnected at step 6) and aFe POWER tube.



INSTALL

Figure L

Refer to Figure L for Steps 18-20

Step 18: Reconnect the Mass Air Flow sensor connector to the Mass Air Flow sensor.

Step 19: If your vehicle is not equipped with the IACV, install the supplied 17" hose into the hardline from **Step 5** and into the aFe POWER tube.

Step 20: If your vehicle comes equipped with an IACV **Do Not** connect the hose to the aFe POWER tube. Refer to **Step 22**.

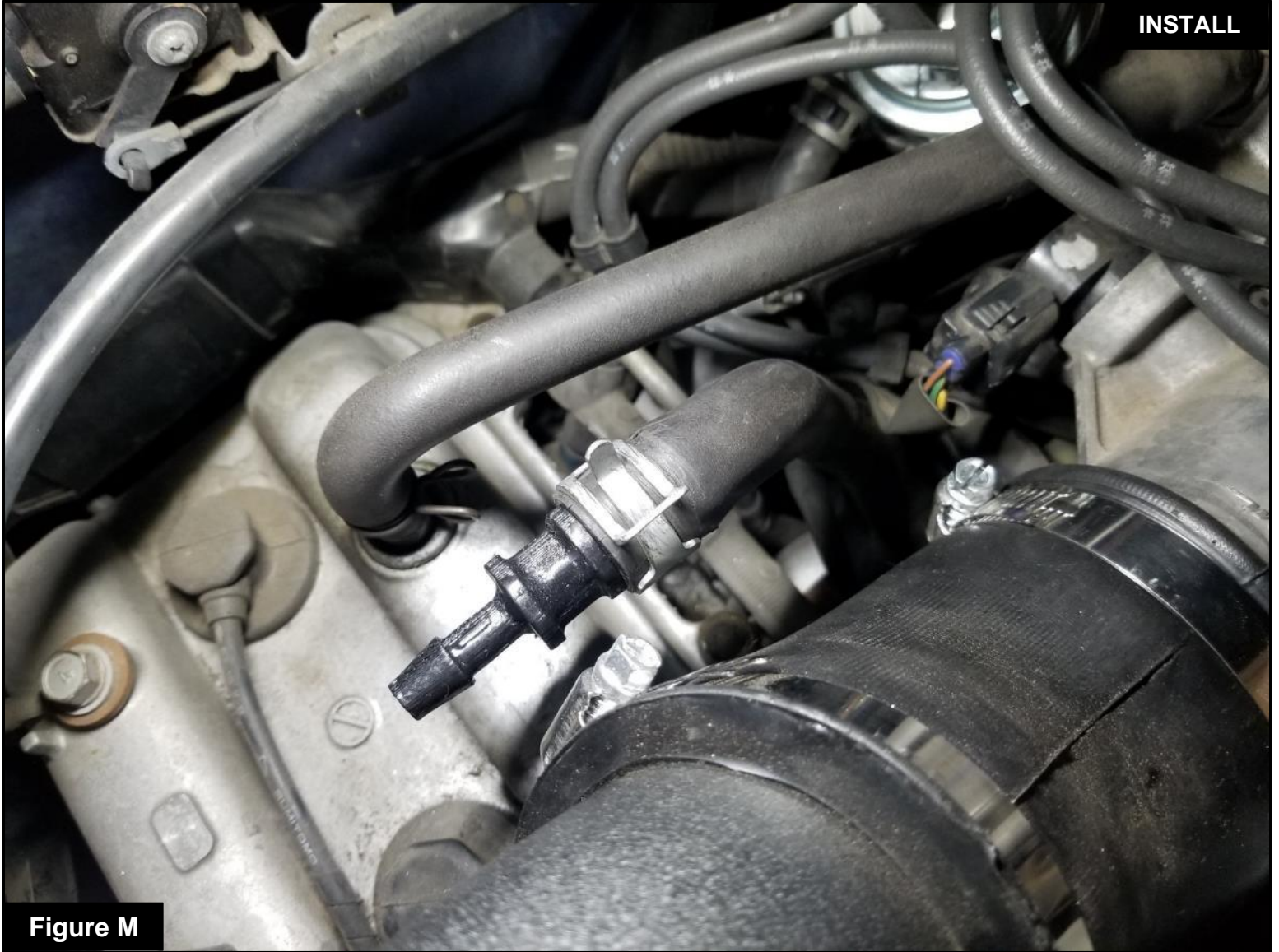


Figure M

Refer to Figure M for Step 21 (If the vehicle is equipped with IACV)

Step 21: Install the supplied reducer fitting into the hose connected to the IACV.

INSTALL

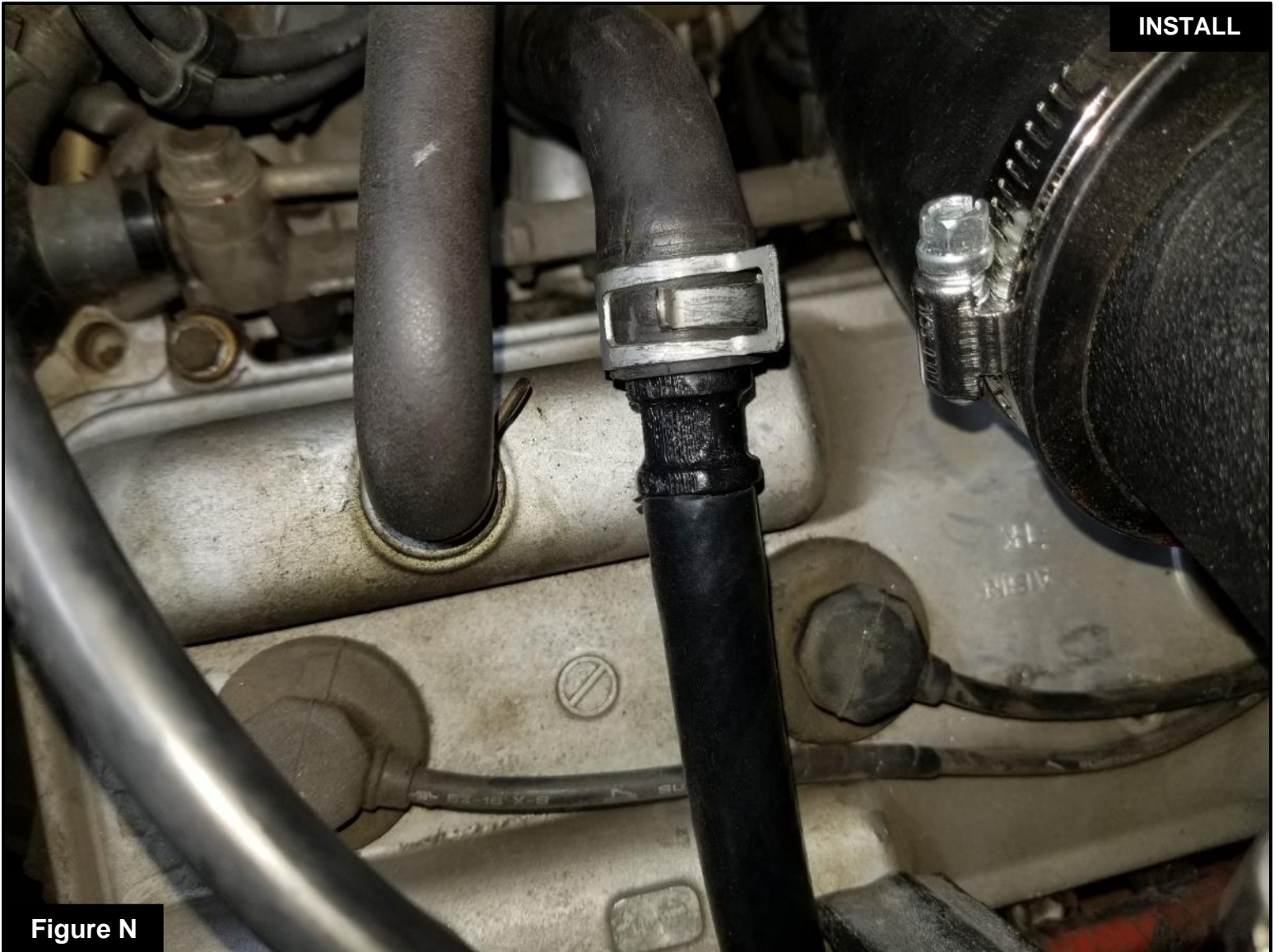


Figure N

Refer to Figure N for Step 22 (If the vehicle is equipped with IACV)

Step 22: Install the supplied 16" length hose into the reducer fitting.

**Figure O****Refer to Figure O for Step 23 (If the vehicle is equipped with IACV)**

Step 23: Connect the supplied 5" length hose into the supplied Tee fitting and connect onto the fitting closer to the aFe housing on the aFe POWER tube.



Figure P

Refer to Figure P for Step 24

Step 24: Install both hoses from **Step 20** and **Step 22** into the supplied Tee fitting.



Figure Q

Refer to Figure Q for Step 25

Step 25: Make sure all components and connections are secure.

NOTE: Place enclosed CARB EO sticker on a smooth/clean surface on or near the air intake system.

EO identification label is required to pass the smog test inspection.

Your installation is now complete. Thank you for choosing aFe POWER



Page Left Blank Intentionally



Page Left Blank Intentionally



Page Left Blank Intentionally



advanced FLOW engineering, inc.

Corona, CA 92879

<https://afepower.com/contact>