



Intake kit Installation Instructions: 2006-2008 BMW E86 Z4 M Coupe/E85 Z4 M Roadster L6-3.2L Stage 1

Kit P/N:	51/54-11521	
Make:	BMW	
Model:	Year:	Engine:
E86 Z4 M Coupe	06-08	L6-3.2L
E85 Z4 M Roadster	06-08	L6-3.2L

Tools Required:
5/16" nut driver
1/4" nut driver
Flat head screwdriver
10mm socket or extension
T20 torx bit
5mm allen key

Parts list:
1 Air filter (Pro-5R™ 24-91021
Pro Dry S™ 21-90044)
1 Housing
1 Cover
1 Adaptor, billet filter
2 Screws, hex M6
4 Washers, flat M6

2 Screw, cheese head M4 x .7 x 16
2 Nut, hex M6
8 Button head, screws M6
4 Washer, wavy M6
1 Edge trim seal @ 2.5" L

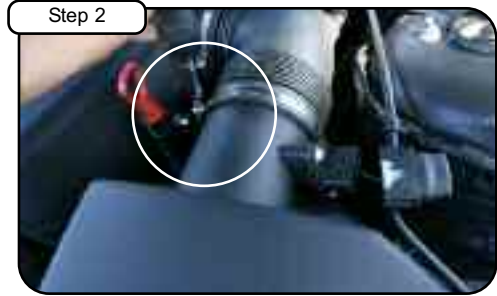


Complete Kit w/ Parts

advanced FLOW engineering™
P.O. Box 1719
Corona, CA 92878
Support: 951-493-7100
www.aFePower.com



Complete Stock Intake.



Disconnect MAF sensor harness. Loosen clamps with 1/4" nut driver. Pull back vacuum line.



Unclip upper half of air box and lift carefully.



Pull and lift air box out of vehicle.



Turn and remove air box clips out of vehicle.



Remove MAF sensor from stock air box using T20 torx bit.



Install filter adaptor to housing using 4 button head screws & wavy washers. Tighten using 5mm allen key.



Install MAF sensor to filter adaptor using the 2 M4 screws provided and tighten using flat head screwdriver.



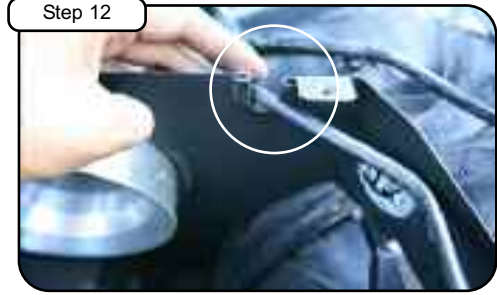
Install housing into vehicle.



Loosen clamp on plenum box and position to new adaptor. *Do not tighten.*



With screws, washers and nuts provided, place through holes from step 5. Tighten using 10mm socket or wrench.



Attach trim seal to groove in housing. Place line in groove.



Install air filter and tighten using 5/16" nut driver. Tighten clamps on intake tube using 1/4" nut driver.



Install cover using button head screws provided and tighten using 5/32" allen key. Re-connect MAF sensor harness.



Place enclosed CARB EO sticker on a clean/smooth surface on or near the intake system. EO identification label is required in passing the Smog Check inspection. Your installation is now complete. Please check all bolts and clamps periodically. Re-tighten if necessary. Thank you for choosing aFe!

Note: Filter Cleaning and Re-oiling: When cleaning your aFe filter, be sure to use only aFe's "Restore Kit" (aFe P/N: 90-50001 blue oil aerosol, or aFe P/N: 90-50501 blue squeeze bottle oil).
Filter Replacement: **Pro-5R™** PN: 24-91021 (black w/blue media). **Pro Dry S™** P/N: 21-90044 (black w/white media) **Pro Dry S™** cleaning: see cleaning instruction sheet 06-00074.
For replacement part(s) or "Restore Kit" please call aFe sales/tech support @ 951-493-7100