



FORD 2017-2020 RAPTOR WHEEL WELL LINER

Thank you for choosing Rough Country for your suspension needs.

Rough Country recommends a certified technician installs this system. In addition to these instructions, professional knowledge of disassemble/reassembly procedures as well as post installation checks must be known. Attempts to install this system without this knowledge and expertise may jeopardize the integrity and/or operating safety of the vehicle.

Please read all the instructions before beginning the installation. Check the kit hardware against the parts list. Be sure you have all the needed parts and understand where they go. Also please review the tools needed list and make sure you have needed tools.

PRODUCT USE INFORMATION

⚠ WARNING As a general rule, the taller a vehicle is the easier it will roll. Seat belts and shoulder harnesses should be worn at all times. Avoid situations where a side rollover may occur.

Braking performance and capabilities are decreased when significantly larger/heavier tires and wheels are used. Take this into consideration while driving. Also, speedometer recalibration is necessary when larger tires are installed.

Do not add, alter, or fabricate any factory or after-market parts which increase vehicle height over the intended height of the Rough Country product purchased. Mixing component brands, lifts, and/or combining body lift with suspension lifts voids all warranties. Rough Country makes no claims regarding lifting devices and excludes any and all implied claims. We will not be responsible for any product that is altered.

⚠ NOTICE NOTICE TO DEALER AND VEHICLE OWNER

Any vehicle equipped with any Rough country product must have the "Warning to Driver" decal installed on the sun visor / dash. The decal is to act as a constant reminder for whoever is operating the vehicle of its unique handling characteristics. **INSTALLING DEALER**—It is your responsibility to install the warning decal and to forward these installation instructions on too the vehicle owner for review and to be kept in the vehicle for its service life.

KIT CONTENTS:

- Driver Side Liner (7915DS)
- Passenger Side Liner (7915PS)
- 2 - #10 Body Clip
- 4 - #10 Screw

Tools Required:

- Phillips Screwdriver
- 1/8" Drill
- Drill Motor
- 9/32" Socket

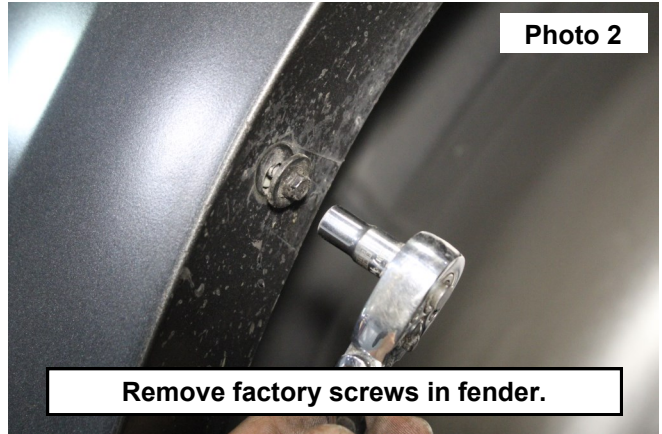
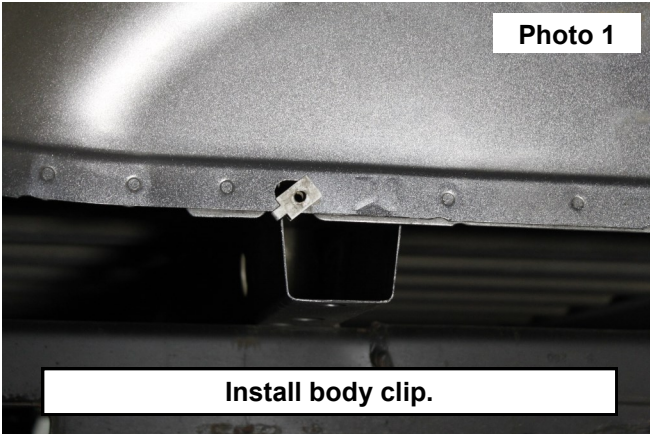
Torque Specs:

Size	Grade 5	Grade 8	Size	Class 8.8	Class 10.9
5/16"	15 ft/lbs	20ft/lbs	6MM	5ft/lbs	9ft/lbs
3/8"	30 ft/lbs	35ft/lbs	8MM	18ft/lbs	23ft/lbs
7/16"	45 ft/lbs	60ft/lbs	10MM	32ft/lbs	45ft/lbs
1/2"	65 ft/lbs	90ft/lbs	12MM	55ft/lbs	75ft/lbs
9/16"	95 ft/lbs	130ft/lbs	14MM	85ft/lbs	120ft/lbs
5/8"	135ft/lbs	175ft/lbs	16MM	130ft/lbs	165ft/lbs
3/4"	185ft/lbs	280ft/lbs	18MM	170ft/lbs	240ft/lbs

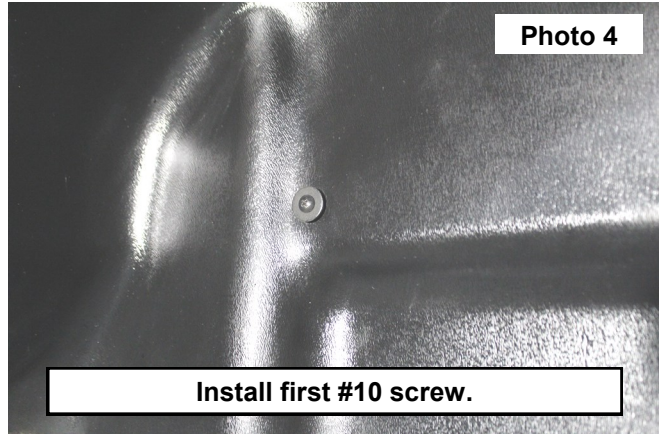
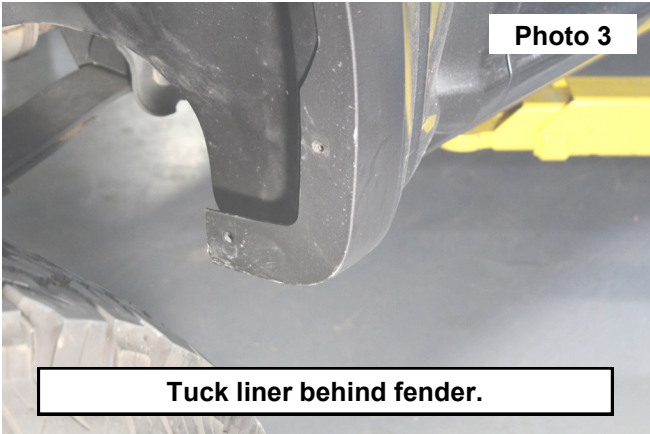


INSTALLATION INSTRUCTIONS

1. Clean rear wheel wells prior to installation.
2. Install supplied #10 body clip over the factory hole in the fender area. **See Photo 1.**
3. Remove the 8 factory hex head screws along the fender flare with a 9/32" socket. Retain hardware for reuse. **See Photo 2.**



4. Place the passenger side wheel well liner over the rear tire. Lift the liner straight up and tuck the liner behind the fender lip. **See Photo 3.**
5. Line the predrilled hole in the liner to the previously installed body clip. Use supplied #10 screw to secure the liner to the previously installed body clip. Tighten with a Phillips screwdriver. **See Photo 4.**



6. Line the predrilled holes at the front and rear of the liner with the factory holes in the fender. Use the previously removed factory screws to secure the liner to the fender. Tighten with a 9/32" socket.
7. With three fasteners installed, locate the final predrilled hole in the liner. Use an 1/8" drill to make a hole in the sheet metal of the bed. Install the supplied #10 screw using a Phillips screwdriver. **See Photo 5.**
8. Install the remaining factory screws in the factory locations with a 9/32" socket.
9. Repeat for driver side.



POST INSTALLATION INSTRUCTIONS

1. Check all fasteners for proper torque. Check to ensure for adequate clearance between all rotating, mobile, fixed, and heated members. Verify clearance between exhaust and brake lines, fuel lines, fuel tank, floorboards, and wiring harness.
2. On some vehicles, the front lower skirting will need to be trimmed if using certain wheel/tire combinations and with heavy offset wheels. Trim only as needed.
3. All kit components must be retightened at 500 miles and then every 300 miles after installation. Periodically check all hardware for tightness.
4. Install "Warning to Driver" decal on sun visor.

By purchasing any item sold by Rough Country, LLC, the buyer expressly warrants that he/she is in compliance with all applicable, State, and Local laws and regulations regarding the purchase, ownership, and use of the item. It shall be the buyers responsibility to comply with all Federal, State and Local laws governing the sales of any items listed, illustrated or sold. The buyer expressly agrees to indemnify and hold harmless Rough Country, LLC for all claims resulting directly or indirectly from the purchase, ownership, or use of the items.

