



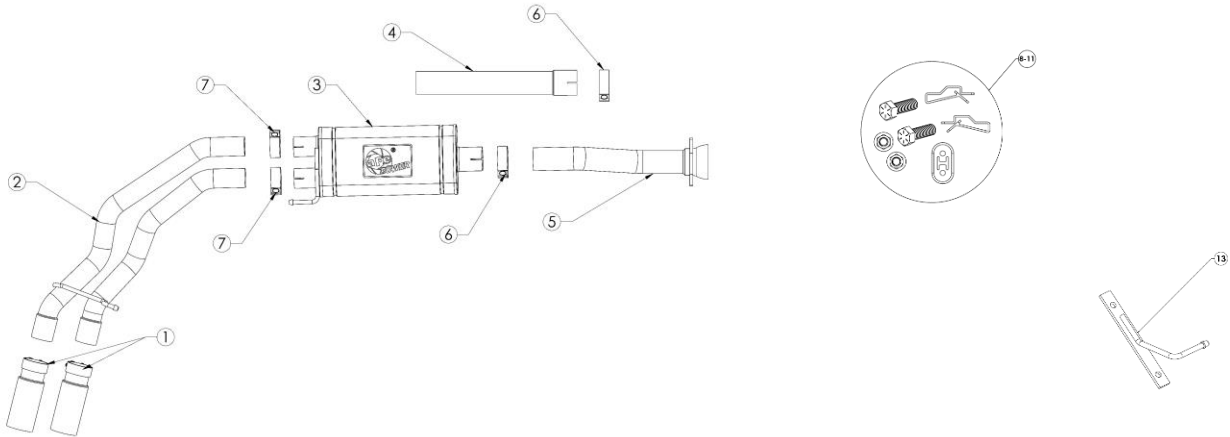
# INSTALLATION INSTRUCTIONS

Cat-Back Exhaust

MAKE: Ford  
 MODEL: F-150  
 YEAR: 2021-2022  
 ENGINE: V6-2.7L(tt)/3.5L(tt)/ V8-5.0L

49-43128-B  
 49-43128-P

NOTE: Fits CC/SB (145" WB), CC/LB (156.8" WB),  
 EC/SB (145" WB), and EC/LB (163.7" WB)



Item	Description	Part Number	Quantity
1	EXH Tip 3 In x 3.5 Out x 9L in Bolt-On Blk	R49T30352-B09	2
1	EXH Tip 3 In x 3.5 Out x 9L in Bolt-On Pol	R49T30352-P09	2
2	Tail-Pipe Assembly	05-144148	1
3	Muffler Assembly: 3" Dia.	05-144147	1
4	Extension pipe	05-144139	1
5	Mid-Pipe Assembly	05-245161	1
6	Clamp, Band: 3"	05-41055	2
7	Clamp, Band: 2.5"	05-41061	2
8	Screw, Socket Hd Cap, M10 x 1.5 x 25mm	03-50418	2
9	Exhaust Isolation Mount	05-46050	1
10	Nut, Clip-On: M8 x 1.25, Black Phosphate	05-60104	2
11	Bolt, M8 x 1.25 x 25 mm	03-50442	2
12	Hanger Bracket	05-46190	1

aFe POWER recommends professional installation on this product. Thoroughly inspect the aFe POWER exhaust system to make sure there is no damage from shipping (if damage is noted, immediately contact aFe POWER customer service). Allow time for your vehicle to cool down prior to installation. When working on your vehicle proceed with caution. Wear protective safety equipment; eye goggles and gloves to ensure a safe installation.

Install band clamps to proper torque specifications of 40-45 ft-lb.





# INSTALLATION INSTRUCTIONS

Cat-Back Exhaust

MAKE: Ford  
MODEL: F-150  
YEAR: 2021-2022  
ENGINE: V6-2.7L(tt)/3.5L(tt)/ V8-5.0L

49-43128-B  
49-43128-P

**NOTE: Fits CC/SB (145" WB), CC/LB (156.8" WB), EC/SB (145" WB), and EC/LB (163.7" WB)**

1. **(Read instructions prior to installation.)** It is recommended to not fully tighten the exhaust until it has been fully installed. Leave loose for adjustability.
2. Secure vehicle on jack stands (refer to your manual for specified jack stand positions).
3. For faster installation, spread out the parts of the exhaust alongside your vehicle as shown in the diagram above.
4. Secure the stock exhaust with jack/stands.
5. Start by placing clip-on nuts into the frame as shown in **FIG 2 and FIG 3.**



6. Place hanger bracket over clip-on nuts and tighten bracket down with provided (x2) bolts as shown in **FIG 4.**
7. Attach the O.E. hanger bracket on the inside on the inside of the frame on the first set of holes as shown in **FIG 5**



8. Install the mid-pipe using the provided bolts and nuts, but do not fully tighten.
9. Using a jack/stand for support, slide the muffler assembly into place using the provided 3" band clamps and OE isolation mount. (Install extension pipe if needed).

**Note: Use table for guide on extension pipes**

Cab Configuration	Bed Configuration	Wheelbase	Extension Pipe?
Crew Cab	Short Bed	145"	NO
Crew Cab	Long Bed	156.8"	YES (Trim Extension pipe to 15")
Extended Cab	Short Bed	145"	NO
Extended Cab	Long Bed	163.7"	YES (21" Extension Pipe)

10. Place provided 2.5" band clamps over the muffler outlets and install the tail-pipe. Insert the provided rubber isolation mounts over the tail-pipe hanger, slide into hanger bracket #1
11. Ensure that all the components of the aFe POWER exhaust system are aligned and are at a safe clearance from all wires, hoses, brake lines, body parts, and tires.
12. Start from the front of the aFe POWER exhaust system and evenly tighten all clamps and fasteners.
13. Start the vehicle and check for any leaks. If any leaks are found, determine cause and repair as necessary.
14. Remove vehicle from jacks stands.
15. It is recommended to re-tighten all clamps and hardware after 50-100 miles.