

# ROUGH COUNTRY

## SUSPENSION SYSTEMS®

### FORD 2015-2024 F150/2017-2024 F250 TAILGATE ASSIST

Thank you for choosing Rough Country for all your vehicle needs.

Please read instructions before beginning installation. Check the kit hardware against the kit contents shown below. Be sure you have all needed parts and know where they go.

If question exist, please call us @1-800-222-7023. We will be happy to answer any questions concerning this product.

Check all fasteners for proper torque. Check to ensure for adequate clearance between all components.

Periodically check all hardware for tightness.

#### KIT CONTENTS:

- 1 - Tailgate Assist Piston
- 1 - Tailgate Cable Bracket
- 1 - Tailgate Bed Bracket

#### Tools Required:

- T-50 Torx
- T-30 Torx
- 10mm Wrench



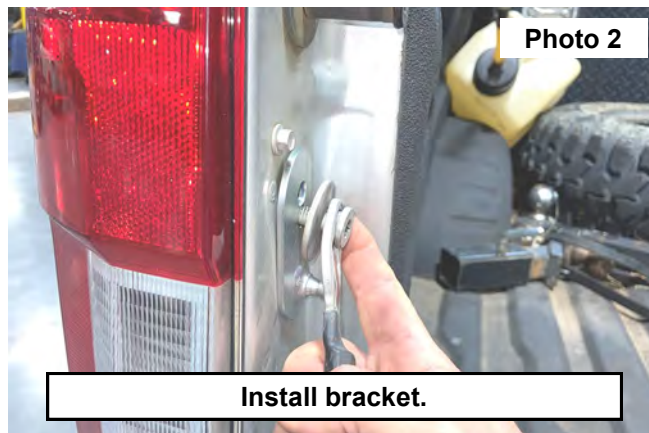
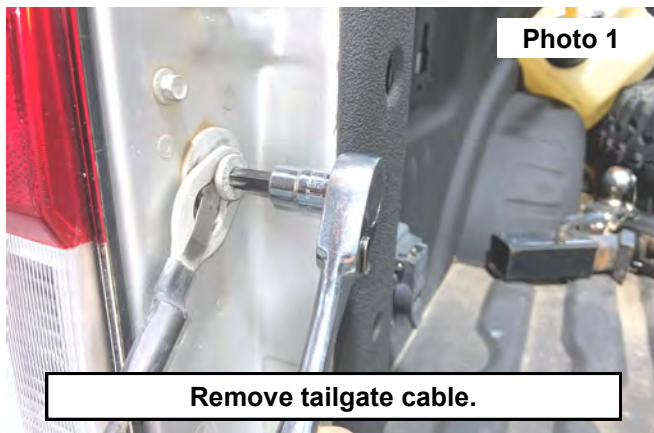
#### Torque Specs:

Size	Grade 5	Grade 8	Size	Class 8.8	Class 10.9
5/16"	15 ft/lbs	20ft/lbs	6MM	5ft/lbs	9ft/lbs
3/8"	30 ft/lbs	35ft/lbs	8MM	18ft/lbs	23ft/lbs
7/16"	45 ft/lbs	60ft/lbs	10MM	32ft/lbs	45ft/lbs
1/2"	65 ft/lbs	90ft/lbs	12MM	55ft/lbs	75ft/lbs
9/16"	95 ft/lbs	130ft/lbs	14MM	85ft/lbs	120ft/lbs
5/8"	135ft/lbs	175ft/lbs	16MM	130ft/lbs	165ft/lbs
3/4"	185ft/lbs	280ft/lbs	18MM	170ft/lbs	240ft/lbs

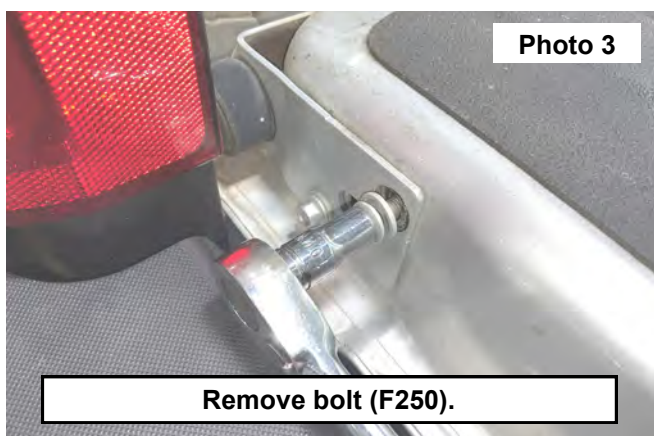


## INSTALLATION INSTRUCTIONS

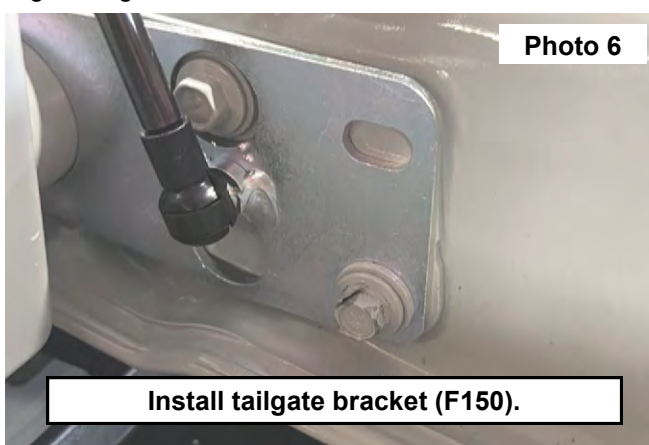
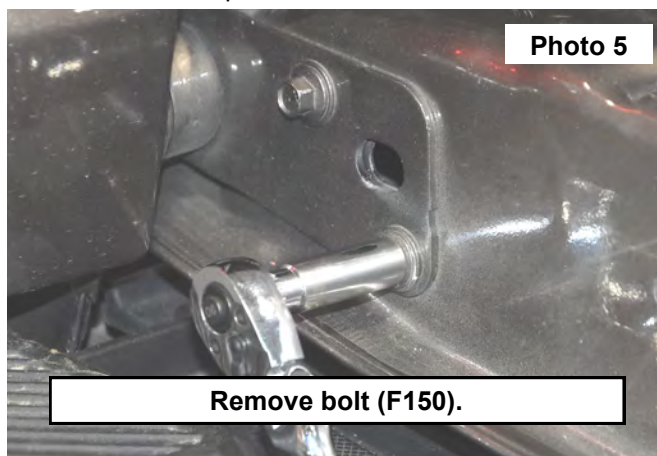
1. Unbolt the tailgate cable with a T50 Torx. Set cable, washer, and bolt aside. **See Photo 1.**
2. Install the tailgate cable bracket by placing it under the factory tailgate washer and bolt. Place tailgate cable back on the factory bolt. Tighten with a T50 Torx. **See Photo 2.**



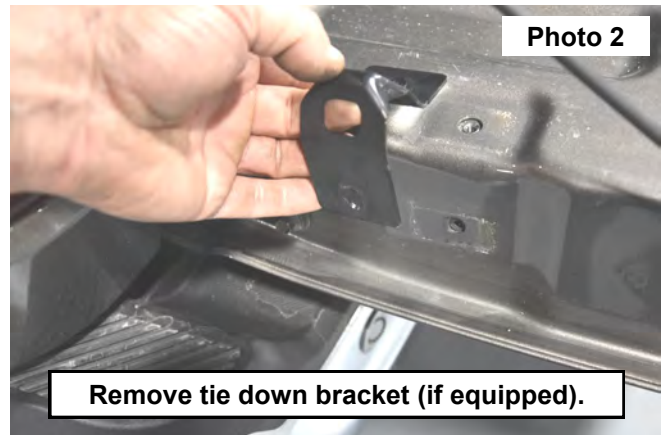
3. **F250:** Remove top tailgate bolt using a 10mm wrench. Retain hardware for reuse. **See Photo 3.**
4. **F250:** Install the tailgate bed bracket over the bottom tailgate bolt. Thread the previously removed bolt into the top hole that lines up with threaded hole on the side of the tailgate. Tighten with a 10mm wrench. **See Photo 4.**



5. **F150:** Remove the bottom tailgate bolt using a 10mm wrench. Retain hardware for reuse. **See Photo 5.**
6. **F150:** Install the tailgate bed bracket over the top tailgate bolt. Thread the previously removed bolt into the bottom hole that lines up with the threaded hole on the side of the tailgate. Tighten with a 10mm wrench. **See Photo 6.**



7. Install the tailgate piston with the cylinder going towards the bracket side and the piston going to the tailgate side. **See Photo 7.**
8. If equipped, remove the bed tie down bracket using a T30 Torx. **See Photo 8.**



By purchasing any item sold by Rough Country, LLC, the buyer expressly warrants that he/she is in compliance with all applicable, State, and Local laws and regulations regarding the purchase, ownership, and use of the item. It shall be the buyers responsibility to comply with all Federal, State and Local laws governing the sales of any items listed, illustrated or sold. The buyer expressly agrees to indemnify and hold harmless Rough Country, LLC for all claims resulting directly or indirectly from the purchase, ownership, or use of the items.

